

BUILDING E

TENANCY

WE HAVE UPDATED THIS LAYOUT TO FOLLOW YOUR REQUIREMENTS, BUT THE FINAL RESPONSIBILITY FOR ITS ACCURACY RESTS ON YOU. YOUR SIGNATURE GIVES US APPROVAL TO PROCEED WITH THE DRAWINGS DEVELOPMENT.

PLEASE CHECK ONE OF THE FOLLOWING:

☐ APPROVED AS IS

☐ APPROVED WITH CHANGES AS NOTED

☐ FINAL APPROVAL

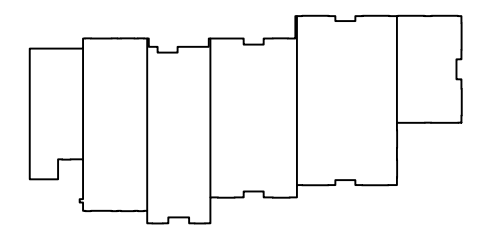
SIGNATURE

DATE

REVISION

ISSUE: A	04/17/25

BUILDING KEY MAP

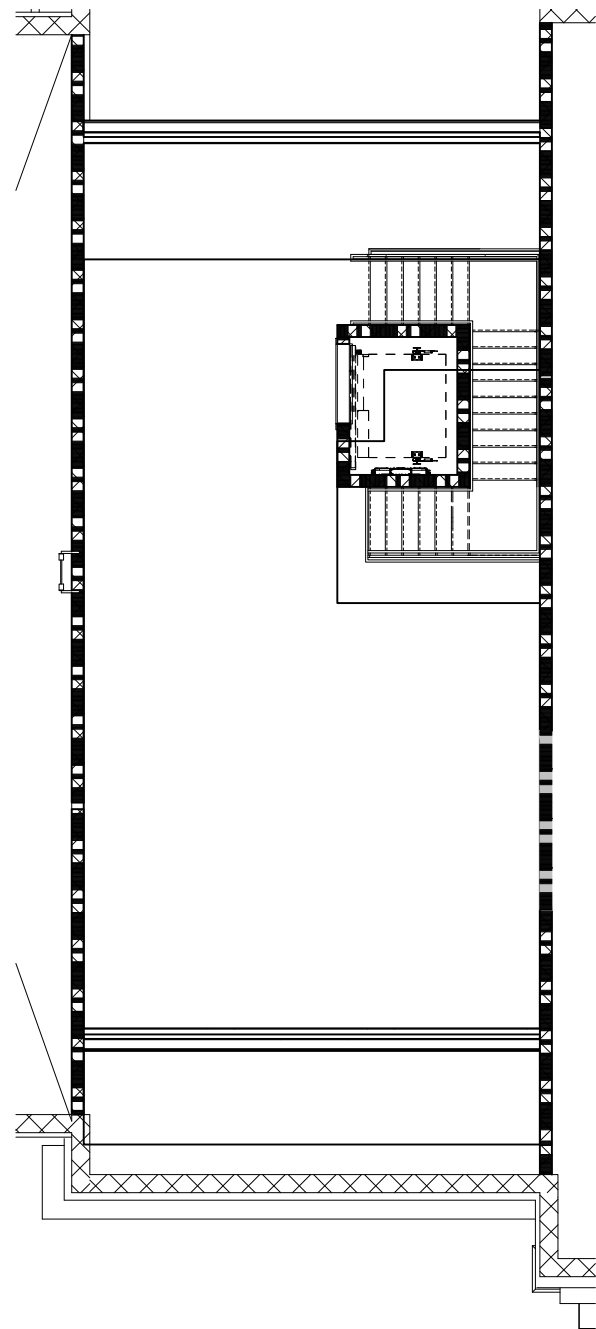


The Shoppes off 80th
World Equestrian Center, Ocala Florida

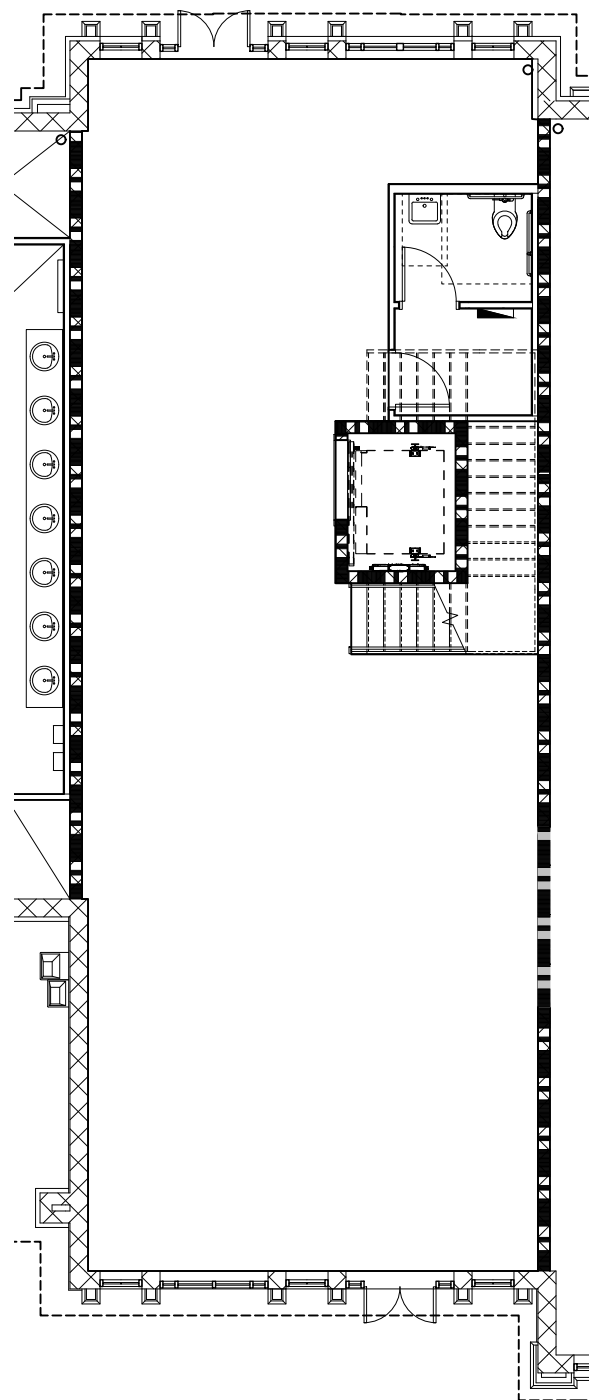
BUILDING E



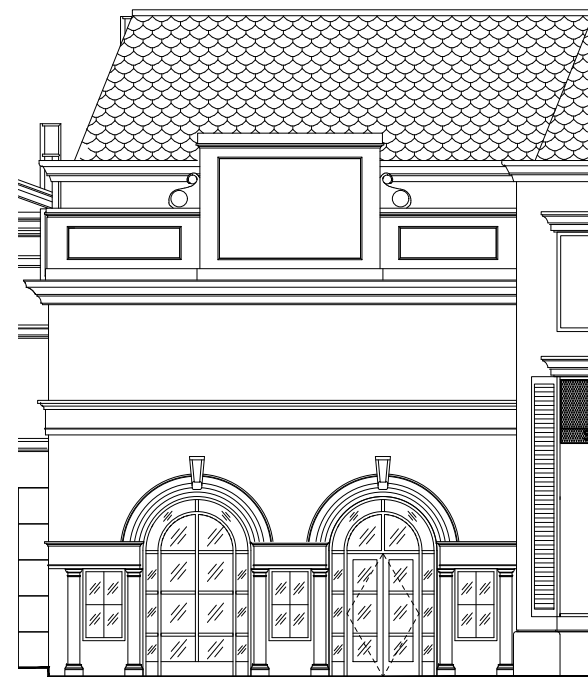
DESIGNERS - PLANNERS
BY MICHAEL JAMES SOPOLIGA
815 Orienta Ave., Suite #1040
Altamonte Springs, Fl. 32701
Ph: (407) 629-6711
Fax: (407) 629-6776
www.mjshomedesign.com



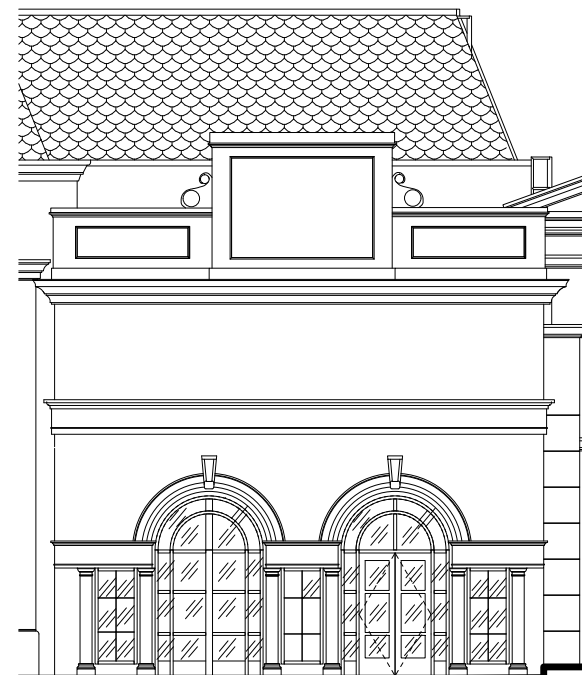
SECOND FLOOR
3 / 32" = 1'-0"



FIRST FLOOR
3 / 32" = 1'-0"



COURTYARD ELEVATION



PARKING LOT ELEVATION

TENANCY

WE HAVE UPDATED THIS LAYOUT TO FOLLOW YOUR REQUIREMENTS, BUT THE FINAL RESPONSIBILITY FOR ITS ACCURACY RESTS ON YOU. YOUR SIGNATURE GIVES US APPROVAL TO PROCEED WITH THE DRAWINGS DEVELOPMENT.

PLEASE CHECK ONE OF THE FOLLOWING:

- ☐ APPROVED AS IS
☐ APPROVED WITH CHANGES AS NOTED
☐ FINAL APPROVAL

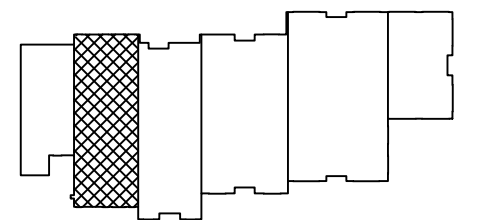
SIGNATURE

DATE

REVISION

ISSUE: A	04/17/25
B: SHOP LOGO REMOVED	09/26/24

BUILDING KEY MAP



SQ FEET

1st floor	1827
2nd floor	1337
TOTAL	3164
STOREFRONT WIDTH	26'-0"

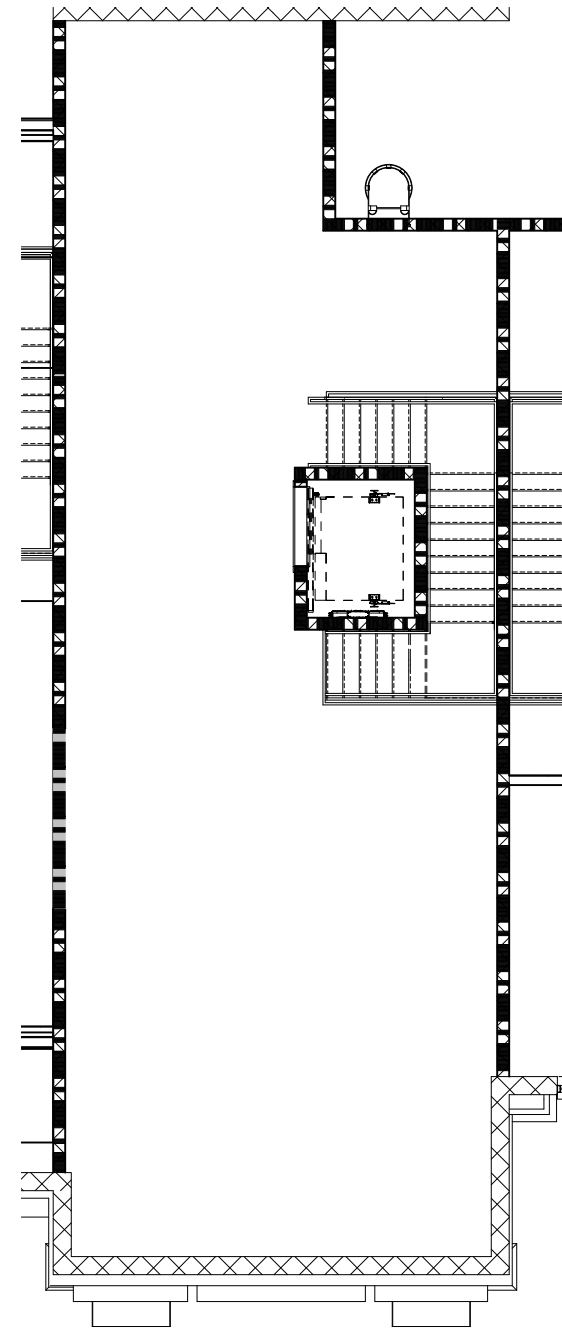


The Shoppes off 80th
World Equestrian Center, Ocala Florida

UNIT E-01

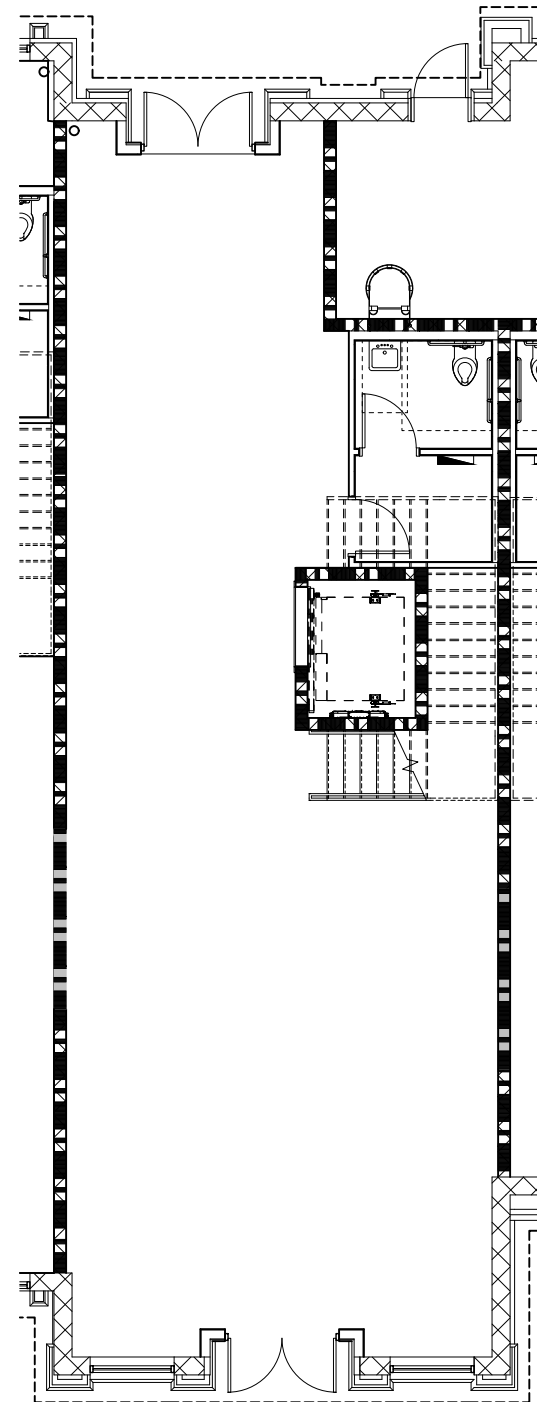


DESIGNERS - PLANNERS
BY MICHAEL JAMES SOPOLIGA
815 Orienta Ave., Suite #1040
Altamonte Springs, FL 32701
Ph: (407) 629-6711
Fax: (407) 629-6776
www.mjshomedesign.com



SECOND FLOOR

3 / 32" = 1'-0"



FIRST FLOOR

3 / 32" = 1'-0"



COURTYARD ELEVATION



PARKING LOT ELEVATION

TENANCY

WE HAVE UPDATED THIS LAYOUT TO FOLLOW YOUR REQUIREMENTS,
BUT THE FINAL RESPONSIBILITY FOR ITS ACCURACY RESTS ON YOU.
YOUR SIGNATURE GIVES US APPROVAL TO PROCEED WITH THE
DRAWINGS DEVELOPMENT.

PLEASE CHECK ONE OF THE FOLLOWING:

- ☐ APPROVED AS IS
☐ APPROVED WITH CHANGES AS NOTED
☐ FINAL APPROVAL

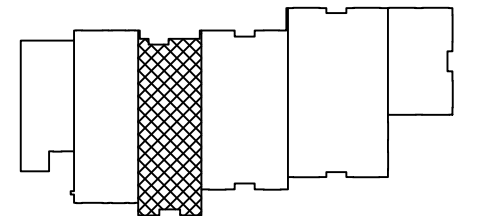
SIGNATURE

DATE

REVISION

ISSUE: A 04/17/25

BUILDING KEY MAP



SQ FEET

1st floor	1620
2nd floor	1636
TOTAL	3256
STOREFRONT WIDTH	26'-0"

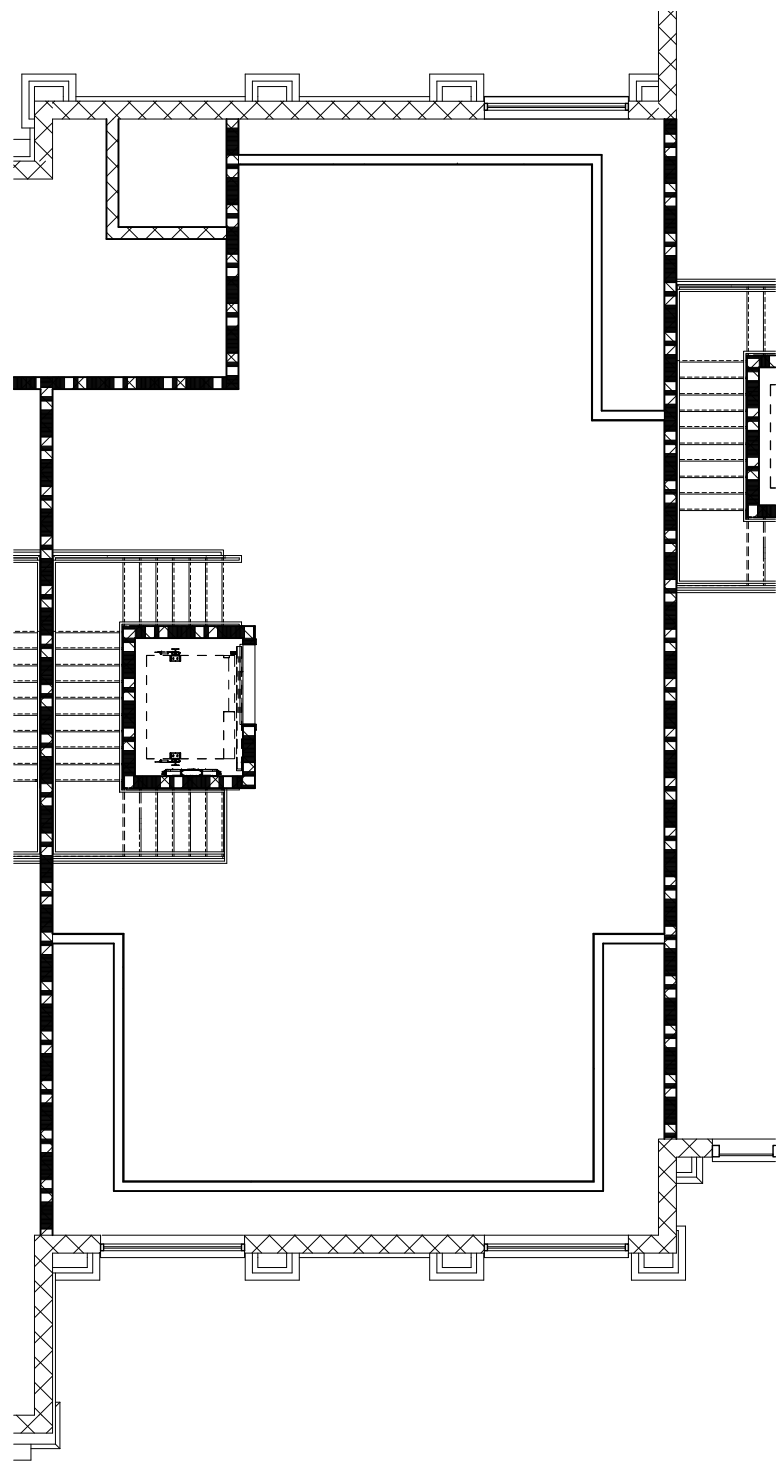


The Shoppes off 80th
World Equestrian Center, Ocala Florida

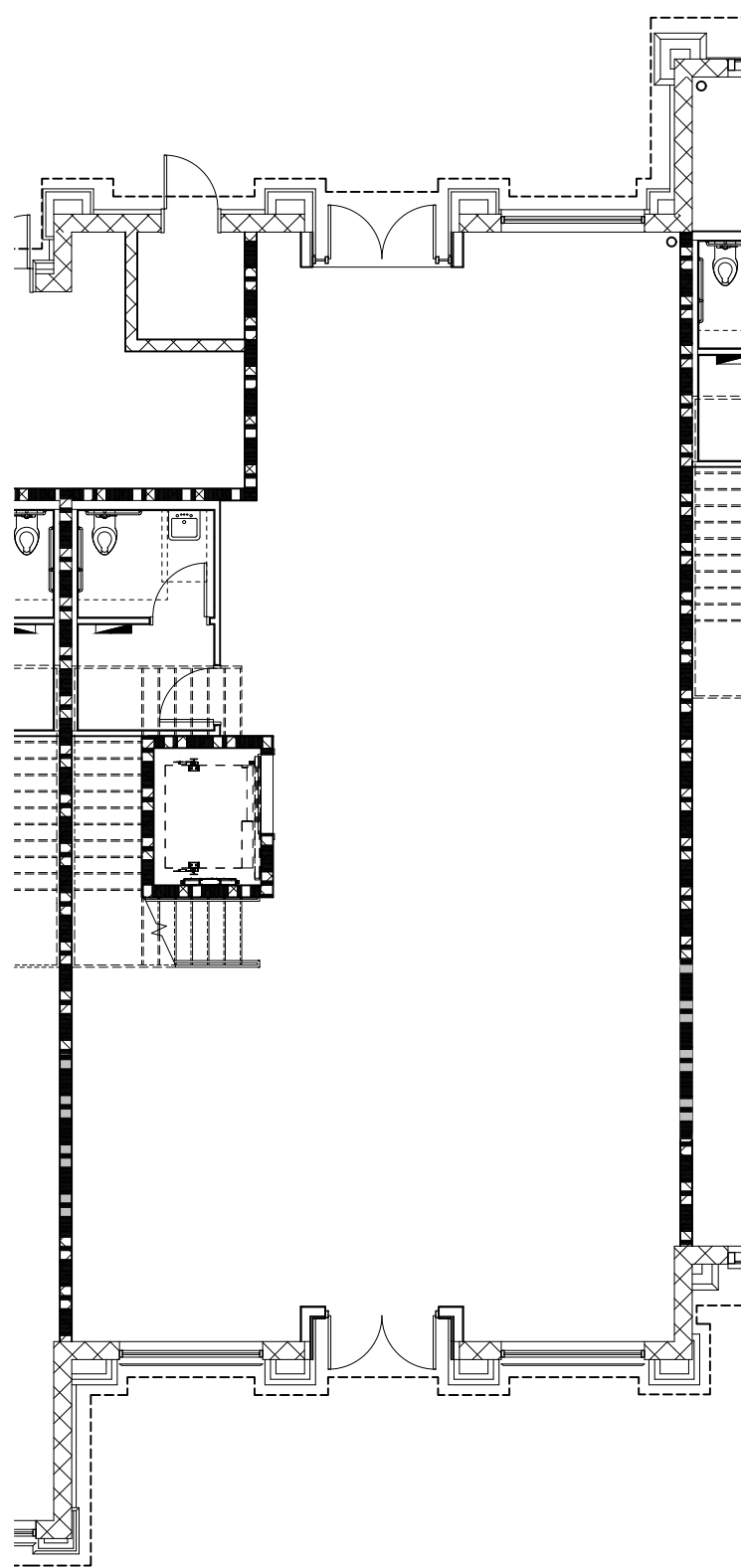
UNIT E-02

MJS
designers group
residential • commercial • architecture

DESIGNERS - PLANNERS
BY MICHAEL JAMES SOPOLIGA
815 Orienta Ave., Suite #1040
Altamonte Springs, FL 32701
Ph: (407) 629-6711
Fax: (407) 629-6776
www.mjshomedesign.com



SECOND FLOOR
3 / 32" = 1'-0"



FIRST FLOOR
3 / 32" = 1'-0"

TENANCY

WE HAVE UPDATED THIS LAYOUT TO FOLLOW YOUR REQUIREMENTS,
BUT THE FINAL RESPONSIBILITY FOR ITS ACCURACY RESTS ON YOU.
YOUR SIGNATURE GIVES US APPROVAL TO PROCEED WITH THE
DRAWINGS DEVELOPMENT.

PLEASE CHECK ONE OF THE FOLLOWING:

- ☐ APPROVED AS IS
☐ APPROVED WITH CHANGES AS NOTED
☐ FINAL APPROVAL

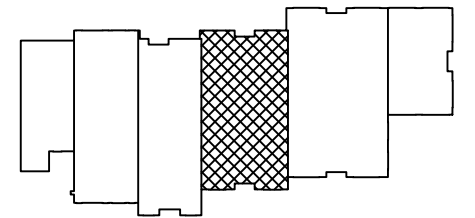
SIGNATURE

DATE

REVISION

ISSUE: A	04/17/25

BUILDING KEY MAP



SQ FEET

1st floor	2028
2nd floor	1714
TOTAL	3742
STOREFRONT WIDTH	34'-0"



The Shoppes off 80th
World Equestrian Center, Ocala Florida

UNIT E-03

MJS
designers group
residential • commercial • architecture

DESIGNERS - PLANNERS
BY MICHAEL JAMES SOPOLIGA
815 Orienta Ave., Suite #1040
Altamonte Springs, Fl. 32701
Ph: (407) 629-6711
Fax: (407) 629-6776
www.mjshomedesign.com



PARKING LOT ELEVATION



COURTYARD ELEVATION



TENANCY

WE HAVE UPDATED THIS LAYOUT TO FOLLOW YOUR REQUIREMENTS,
BUT THE FINAL RESPONSIBILITY FOR ITS ACCURACY RESTS ON YOU.
YOUR SIGNATURE GIVES US APPROVAL TO PROCEED WITH THE
DRAWINGS DEVELOPMENT.

PLEASE CHECK ONE OF THE FOLLOWING:

- ☐ APPROVED AS IS
☐ APPROVED WITH CHANGES AS NOTED
☐ FINAL APPROVAL

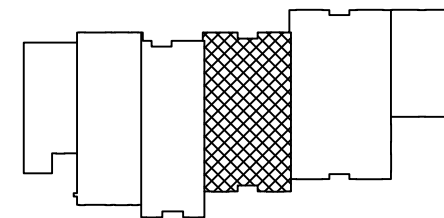
SIGNATURE

DATE

REVISION

ISSUE: A	04/17/25

BUILDING KEY MAP

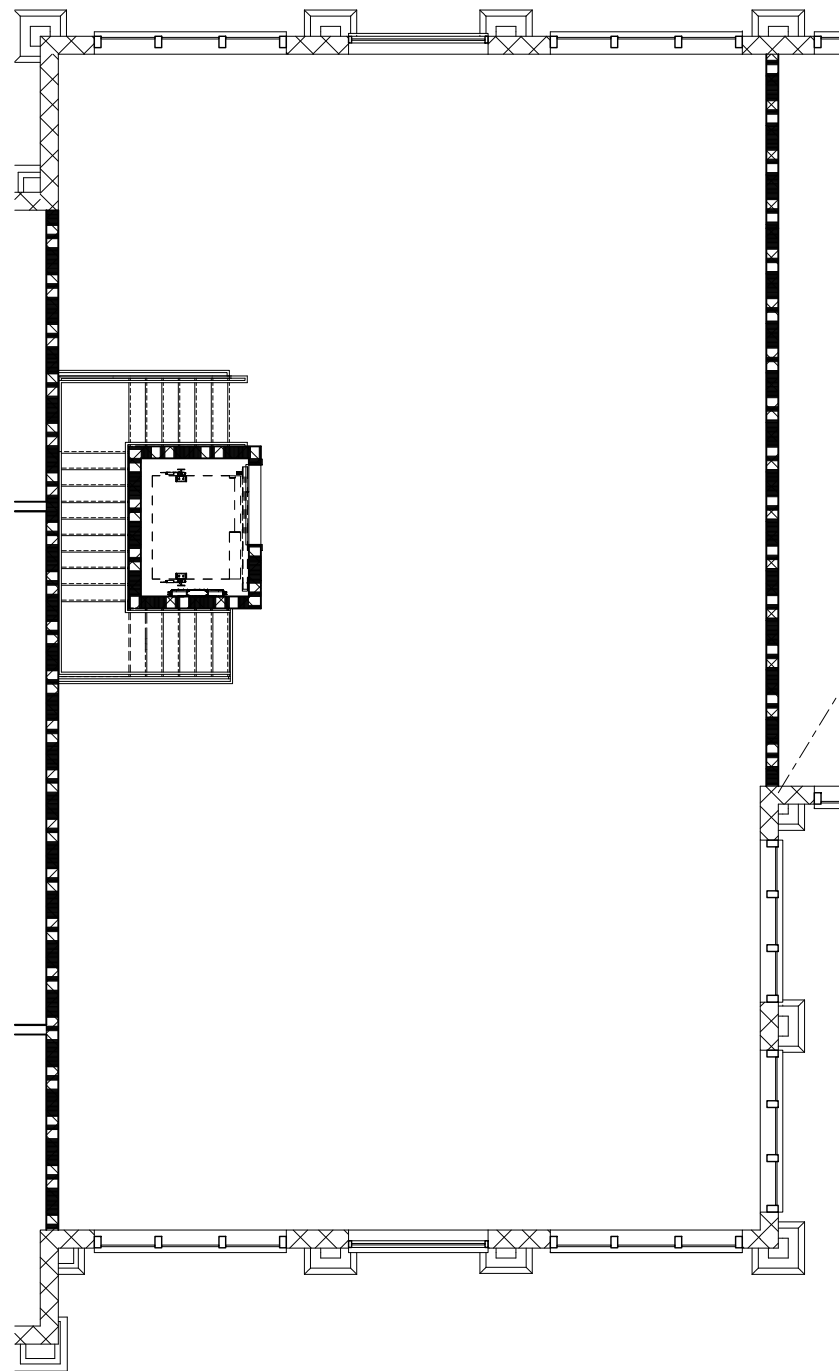


The Shoppes off 80th
World Equestrian Center, Ocala Florida

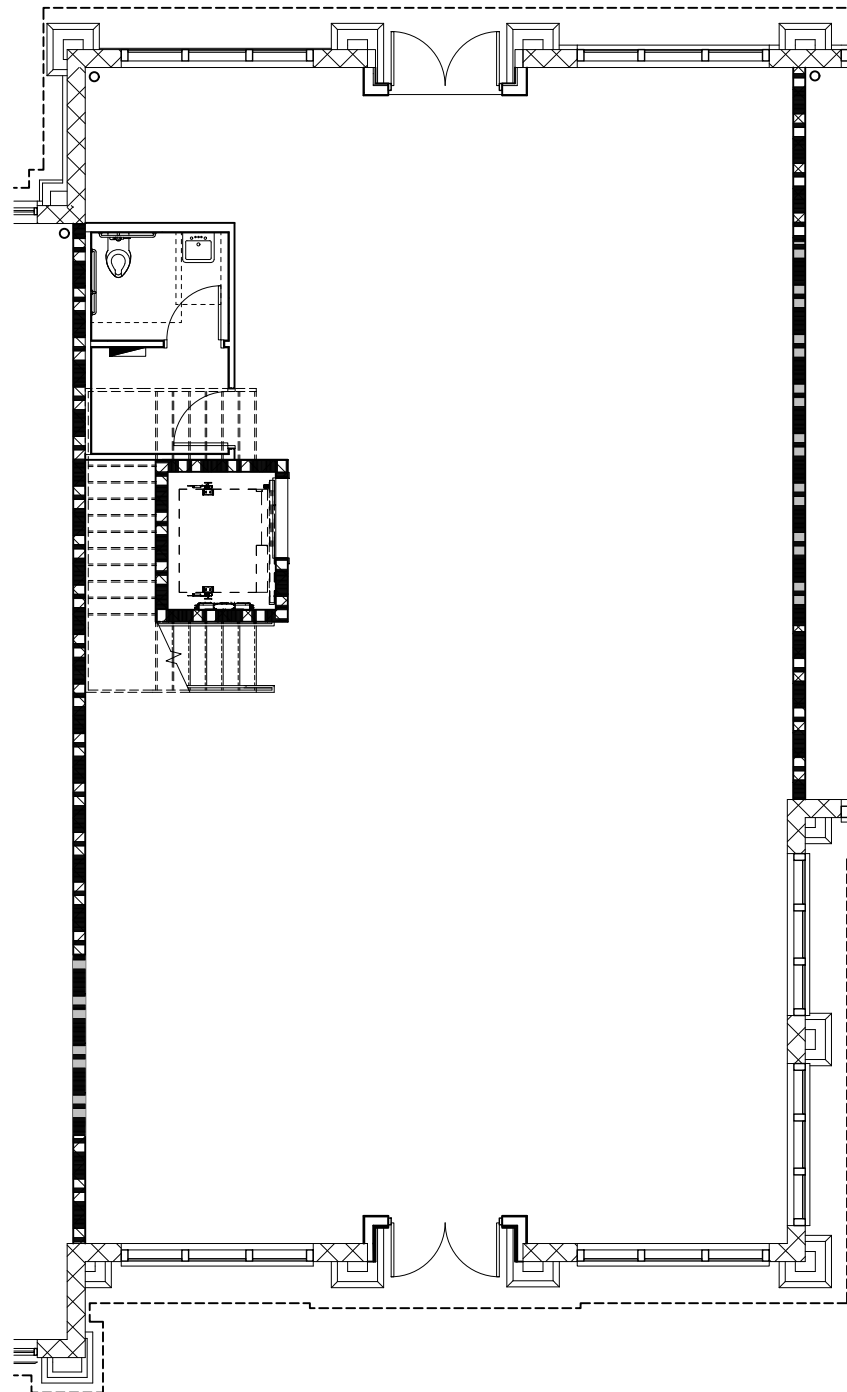
UNIT E-03

MJS
designers group
residential • commercial • architecture

DESIGNERS - PLANNERS
BY MICHAEL JAMES SOPOLIGA
815 Orienta Ave., Suite #1040
Altamonte Springs, FL 32701
Ph: (407) 629-6711
Fax: (407) 629-6776
www.mjshomedesign.com



SECOND FLOOR
3 / 32" = 1'-0"



FIRST FLOOR
3 / 32" = 1'-0"

TENANCY

WE HAVE UPDATED THIS LAYOUT TO FOLLOW YOUR REQUIREMENTS,
BUT THE FINAL RESPONSIBILITY FOR ITS ACCURACY RESTS ON YOU.
YOUR SIGNATURE GIVES US APPROVAL TO PROCEED WITH THE
DRAWINGS DEVELOPMENT.

PLEASE CHECK ONE OF THE FOLLOWING:

- ☐ APPROVED AS IS
☐ APPROVED WITH CHANGES AS NOTED
☐ FINAL APPROVAL

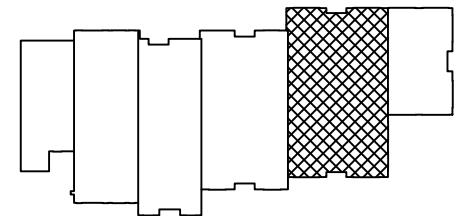
SIGNATURE

DATE

REVISION

ISSUE: A	04/17/25

BUILDING KEY MAP



SQ FEET

1st floor	2671
2nd floor	2706
TOTAL	5377
STOREFRONT WIDTH	40'-0"

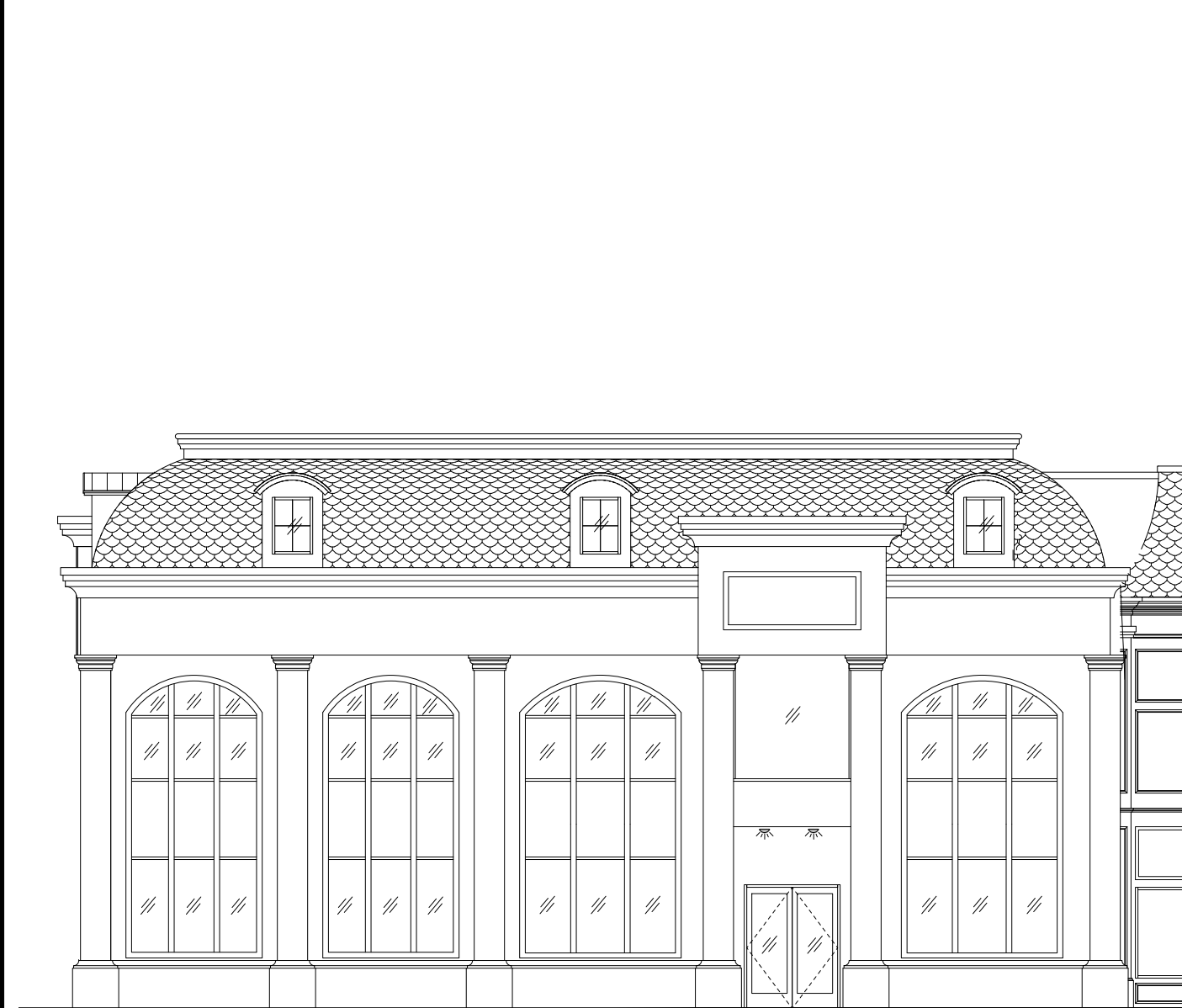


The Shoppes off 80th
World Equestrian Center, Ocala Florida

UNIT E-04

MJS
designers group
residential • commercial • architecture

DESIGNERS - PLANNERS
BY MICHAEL JAMES SOPOLIGA
815 Orienta Ave., Suite #1040
Altamonte Springs, FL 32701
Ph: (407) 629-6711
Fax: (407) 629-6776
www.mjshomedesign.com



E-05

E-04

PARKING LOT ELEVATION



E-04

COURTYARD ELEVATION

TENANCY

WE HAVE UPDATED THIS LAYOUT TO FOLLOW YOUR REQUIREMENTS,
BUT THE FINAL RESPONSIBILITY FOR ITS ACCURACY RESTS ON YOU.
YOUR SIGNATURE GIVES US APPROVAL TO PROCEED WITH THE
DRAWINGS DEVELOPMENT.

PLEASE CHECK ONE OF THE FOLLOWING:

- ☐ APPROVED AS IS
- ☐ APPROVED WITH CHANGES AS NOTED
- ☐ FINAL APPROVAL

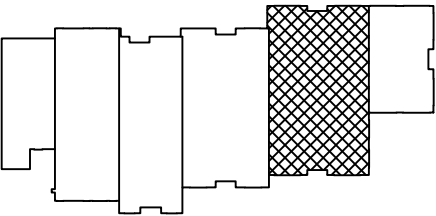
SIGNATURE

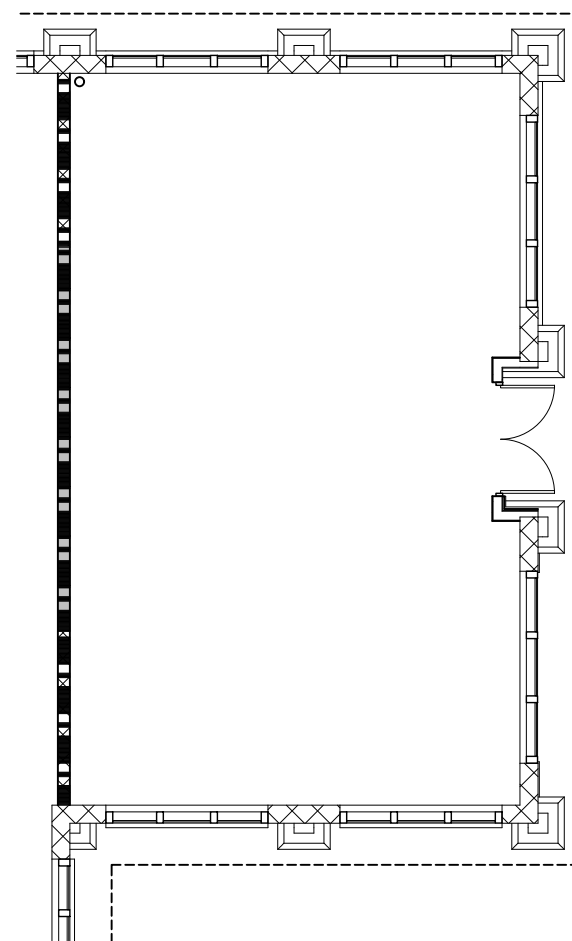
DATE

REVISION

ISSUE: A	04/17/25

BUILDING KEY MAP





FIRST FLOOR

3 / 32" = 1'-0"



COURTYARD ELEVATION



SOUTH WEST AXO [facing Mr. Pickels]

TENANCY

WE HAVE UPDATED THIS LAYOUT TO FOLLOW YOUR REQUIREMENTS, BUT THE FINAL RESPONSIBILITY FOR ITS ACCURACY RESTS ON YOU. YOUR SIGNATURE GIVES US APPROVAL TO PROCEED WITH THE DRAWINGS DEVELOPMENT.

PLEASE CHECK ONE OF THE FOLLOWING:

- ☐ APPROVED AS IS
- ☐ APPROVED WITH CHANGES AS NOTED
- ☐ FINAL APPROVAL

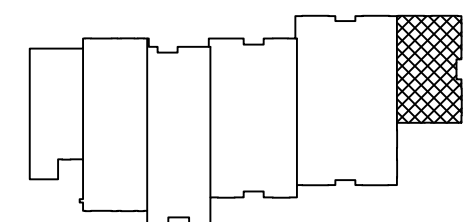
SIGNATURE

DATE

REVISION

ISSUE: A	04/17/25

BUILDING KEY MAP



SQ FEET

1st floor	1123
2nd floor	-
TOTAL	1123
STOREFRONT WIDTH	40'-0"



The Shoppes off 80th
World Equestrian Center, Ocala Florida

UNIT E-05



DESIGNERS - PLANNERS
BY MICHAEL JAMES SOPOLIGA
815 Orienta Ave., Suite #1040
Altamonte Springs, Fl. 32701
Ph: (407) 629-6711
Fax: (407) 629-6776
www.mjshomedesign.com