

FOR SALE OR LEASE

19870-19904 KENDALL DR

SAN BERNARDINO, CA

*±4.91 AC of Land For Sale or Lease
in San Bernardino, CA*

Up to 4.91 acres available

2 buildings totaling 2,947 SF

Fully fenced and lit

Crushed based gravel throughout the site

Sale Price- \$7,485,756 (\$35.00 PSF)

Lease Rate- \$74,858.00 (\$0.35 PSF), Gross/month

MARC BONANDO, SIOB
310.906.3290 | marc.bonando@kidder.com
LIC N° 01348269

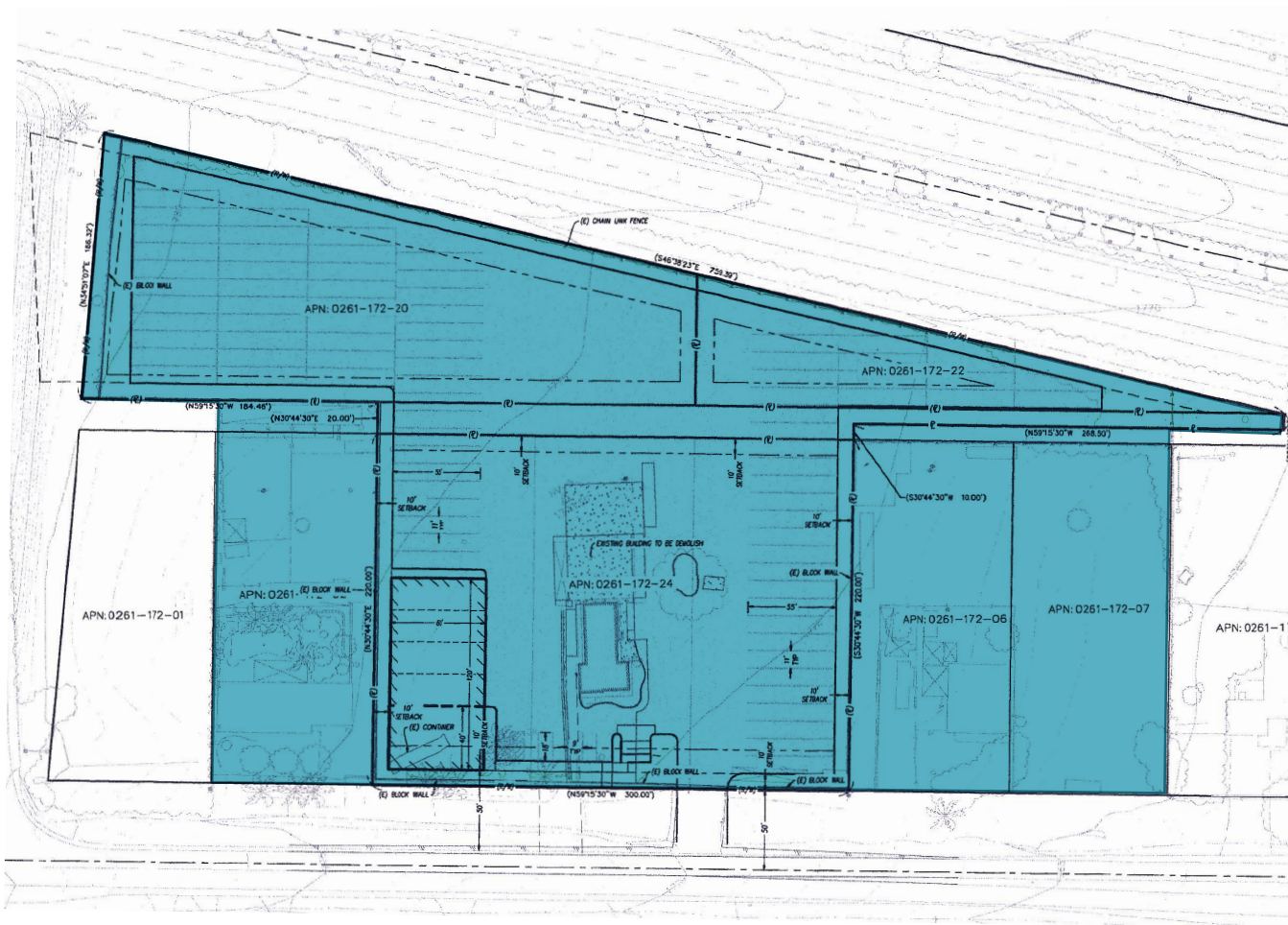


KIDDER.COM

This information supplied herein is from sources we deem reliable. It is provided without any representation, warranty, or guarantee, expressed or implied as to its accuracy. Prospective Buyer or Tenant should conduct an independent investigation and verification of all matters deemed to be material, including, but not limited to, statements of income and expenses. Consult your attorney, accountant, or other professional advisor. All Kidder Mathews designs are the sole property of Kidder Mathews. Branded materials and layouts are not authorized for use by any other firm or person.



SITE PLAN



±4.91 AC

AVAILABLE

\$7,485,756

SALE PRICE

\$0.35/SF

GROSS LEASE RATE