

2335

E 27th Street

Los Angeles, CA

FOR SUBLEASE

SUBLEASE THRU AUGUST 31, 2028
Longer Term Possible




CUSHMAN & WAKEFIELD
GILL | BURNS | YOO

Highlights

- Well-Maintained and Highly Functional Freestanding Building
- Hi-Cube Warehouse (±28' Minimum Clear Height) with Efficient Layout
- Sizable Fenced, Secured Yard with Ample Parking
- North Vernon Location - Only 1 mile to 10 Freeway and Downtown LA
- Heavy Power (1200 AMPS)



Specifications

	Total Building:	±31,954 SF
	Land Size:	±50,401 SF (±1.16 AC)
	Office Size:	±2,662 SF
	Year Built:	1991
	Loading:	5 DH 1 GL
	Clear Height	28'
	Power:	1200 AMPS
	Parking:	±32 Spaces
	Zoning:	VEM



900 Wilshire Boulevard, Suite 2400
Los Angeles, CA 90017
cushmanwakefield.com | Lic #01880493

For more information, please contact:

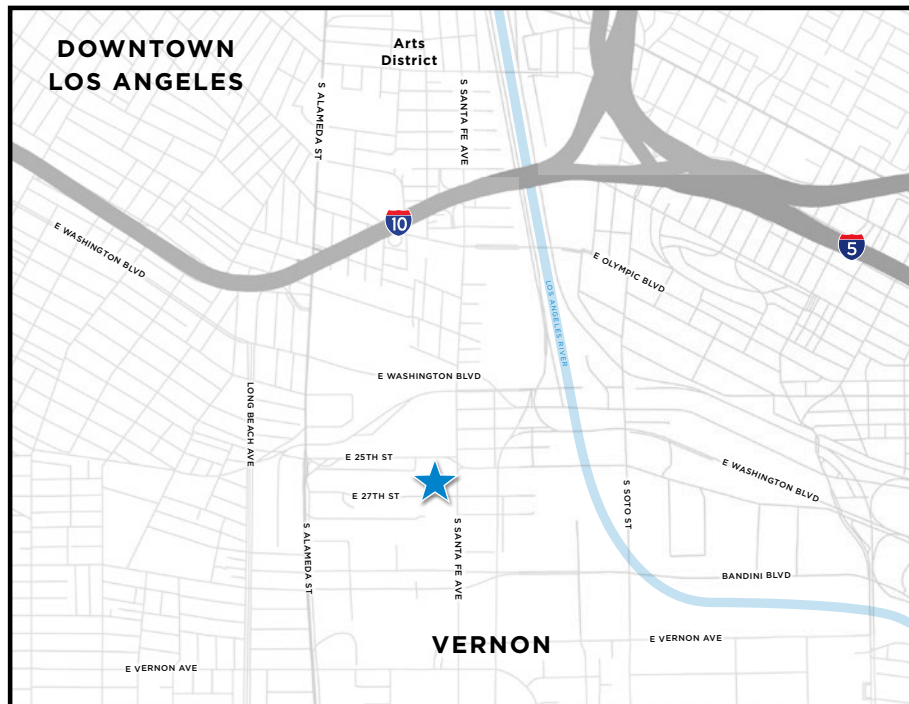
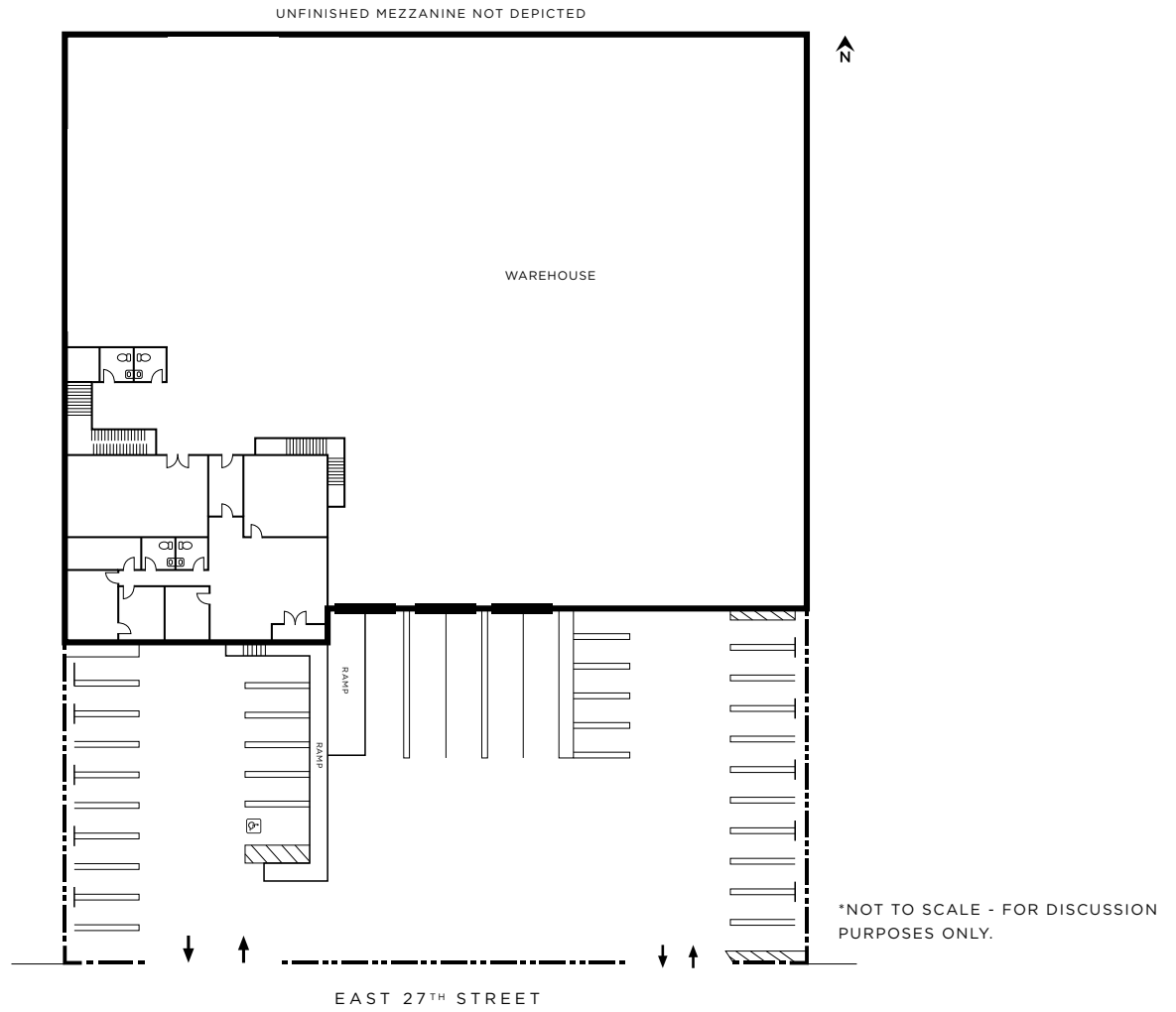
BRANDON GILL
Executive Director
+1 213 629 6528
brandon.gill@cushwake.com
Lic #01262330

BRANDON BURNS
Executive Director
+1 213 629 6541
brandon.burns@cushwake.com
Lic #01194796

JAE YOO
Executive Director
+1 213 629 6551
jae.yoo@cushwake.com
Lic #01503567

CHARLEY KOONES
Senior Associate
+1 213 330 0980
charley.koones@cushwake.com
Lic #02076100

Site Plan



900 Wilshire Boulevard, Suite 2400
Los Angeles, CA 90017
cushmanwakefield.com | Lic #01880493

For more information, please contact:

BRANDON GILL
Executive Director
+1 213 629 6528
brandon.gill@cushwake.com
Lic #01262330

BRANDON BURNS
Executive Director
+1 213 629 6541
brandon.burns@cushwake.com
Lic #01194796

JAE YOO
Executive Director
+1 213 629 6551
jae.yoo@cushwake.com
Lic #01503567

CHARLEY KOONES
Senior Associate
+1 213 330 0980
charley.koones@cushwake.com
Lic #02076100