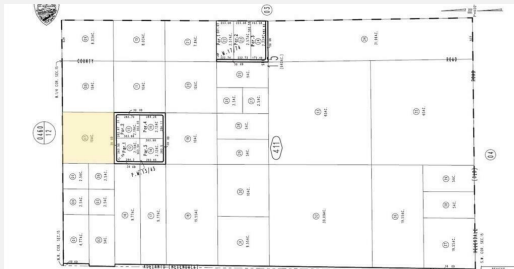




De Soto Ave

Adelanto , CA 92301



ASKING
\$355,000



SIZE
±10 ACRES



ZONING
ADD



APN
0459-411-07



Property Description

- Industrial Parcel
- Proximity to Major Transportation Routes
- Qualified Opportunity Zone
- Permits for Cannabis Cultivation and Processing

Mehdi Mostaedi, ALC
Executive Managing Director
760.780.4210
mmostaedi@naicapital.com
CalDRE #01392527

Jonathan Pollak
Senior Associate
760.780.4217
jpollak@naicapital.com
CalDRE #02106603

NAI Capital
13911 Park Ave #206
Victorville, CA 92392
760.780.4210
info@naicapital.com