

5235 N. Summit Street

Toledo, Ohio 43611 | Lucas County

Retail/ Commercial



Lease Rate:

\$12.00/SF NNN
"As Is"

Available:

6,725 SF
10,762 SF

Building Size:

25,260 SF

Acreage:

1.97 Acres

Zoning:

C-3
(City of Toledo)

Features:

- Approximately 100 parking spaces
- Three curb cuts — signalized intersection
- Pizza Hut is existing tenant
- 9,696 vehicles per day on N. Summit Street
- 5,100 vehicles per day on 124th Street
- Well-located property in Point Place
- Total annual real estate taxes approximately \$23,981
- NNN charges approximately \$2.80/SF plus management fees equal to 3% of gross rent
- Showings by appointment — contact listing agent

**For more
information
contact:**

Duke J. Wheeler, CLS

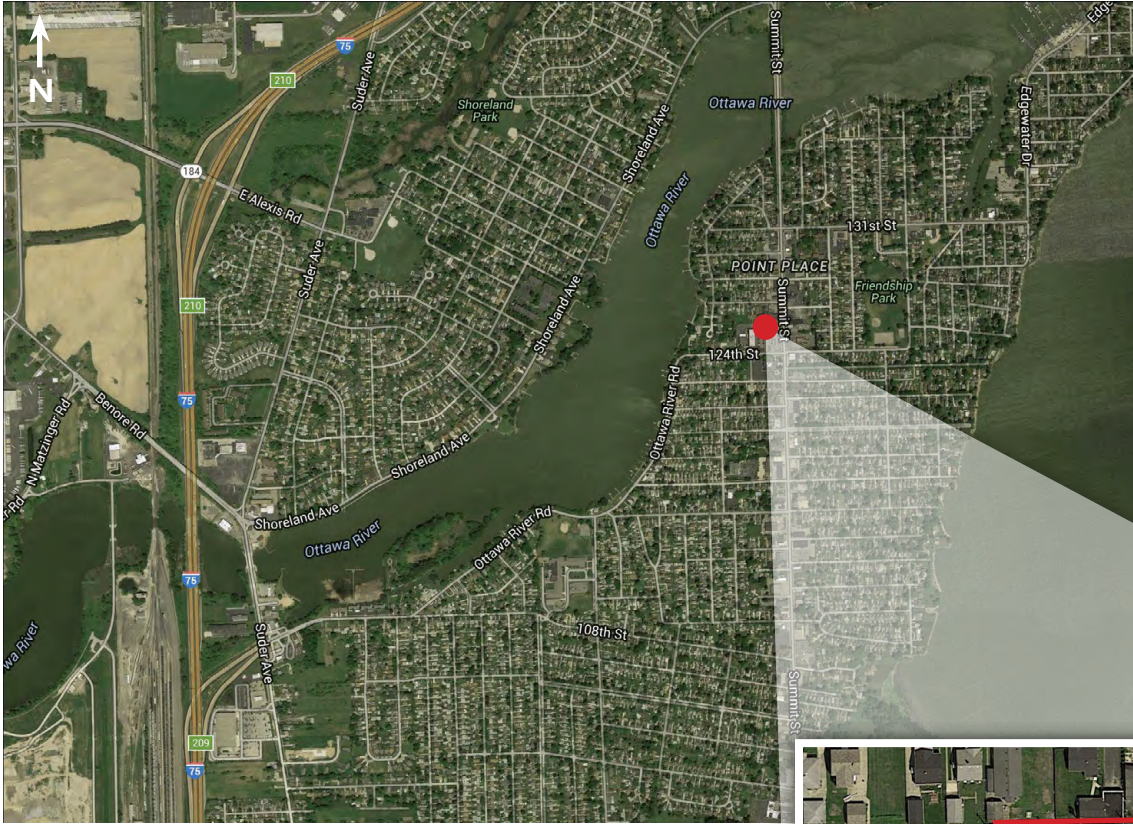
419.794.1121 t

419.794.3999 f

dwheeler@rkgcommercial.com

For Lease

5235 N. Summit Street Toledo, Ohio 43611 | Lucas County



2015 Traffic Counts

N. Summit Street	9,696
124th Street	5,100

2015 Estimated Demographics

	1 mile	3 miles	5 miles	7 minute drive time
Population	8,945	21,508	83,876	39,636
Median Household Income	\$54,378	\$46,609	\$35,850	\$38,693
Median Housing Value	\$117,656	\$108,561	\$93,163	\$95,952
Employees	1,527	10,784	44,544	20,923