

996 AUBURN ROAD
ROCHESTER HILLS, MICHIGAN



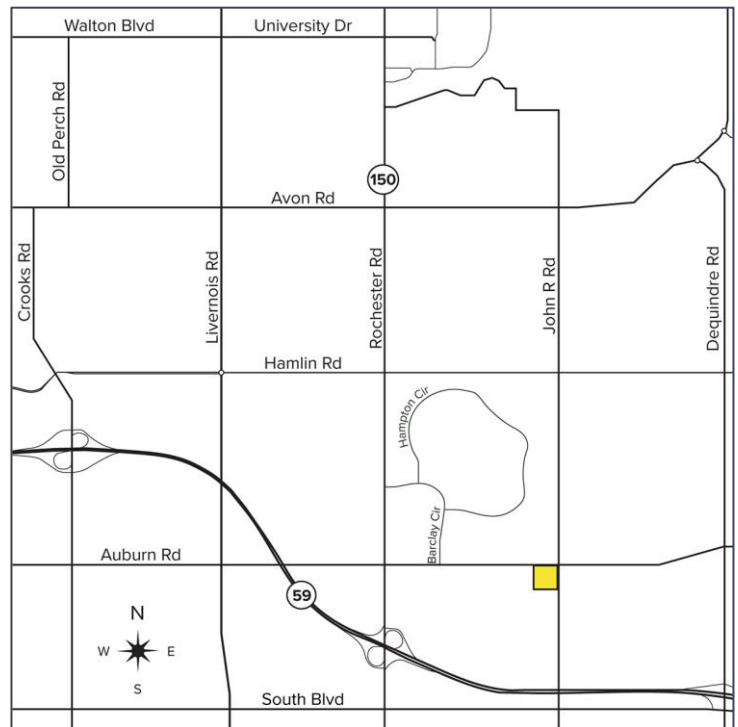
**SIGNATURE
ASSOCIATES**
KNOW SIGNATURE | KNOW RESULTS

RETAIL FOR LEASE
1,200 - 5,000 Square Feet Available



PROPERTY FEATURES

- 1,200 - 5,000 square feet available
- 0.75 acre corner site in Rochester Hills available as Build-to-Suit or Ground Lease
- Zoned NB, Flex Overlay
- Contact Brokers for more details
- Lease Rate: \$35.00/sq. ft. NNN



For more information, please contact:

PETER VANDERKAAY

(248) 359 3837

pvanderkaay@signatureassociates.com

MARVIN PETROUS

(248) 359 0647

mpetrous@signatureassociates.com

SIGNATURE ASSOCIATES

One Towne Square, Suite 1200

Southfield, MI 48076

www.signatureassociates.com

996 Auburn Road – Rochester Hill, Michigan

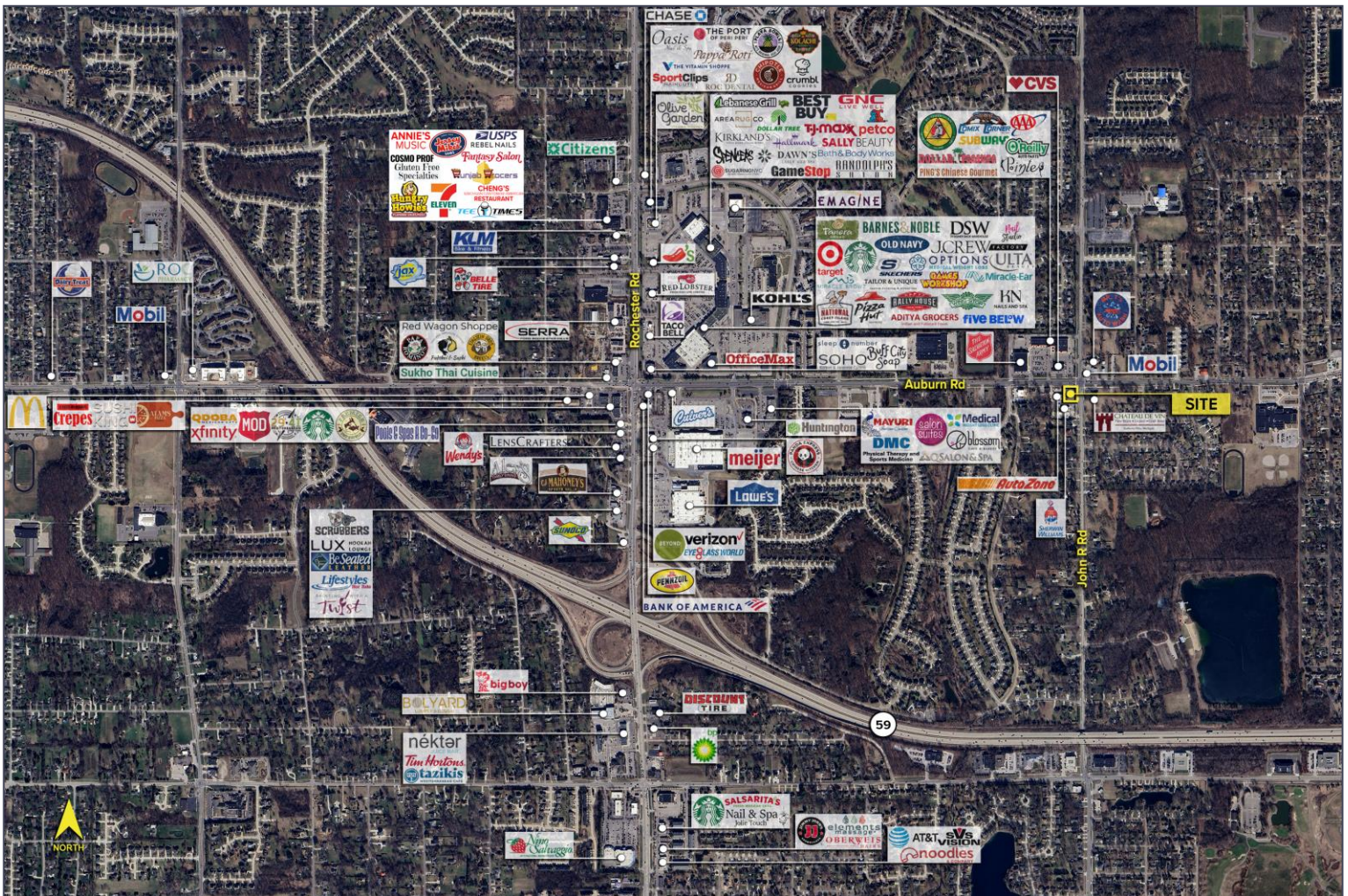
Retail For Lease

1,200 - 5,000
Square Feet
AVAILABLE

Location

DEMOGRAPHICS		
	POPULATION	MED. HH INCOME
1 MILE	8,920	\$114,177
3 MILE	72,980	\$108,409
5 MILE	203,405	\$111,365

TRAFFIC COUNTS (TWO-WAY)	
20,054	John R Rd. N of E. Auburn Rd.
19,476	John R Rd. S of E. Auburn Rd.
14,082	E. Auburn Rd. E of John R. Rd.
16,626	E. Auburn Rd. W of John R. Rd.



For more information, please contact:

PETER VANDERKAAY

(248) 359 3837

pvanderkaay@signatureassociates.com

MARVIN PETROUS

(248) 359 0647

mpetrous@signatureassociates.com

SIGNATURE ASSOCIATES

One Towne Square, Suite 1200

Southfield, MI 48076

www.signatureassociates.com