

# COMMERCIAL PROPERTY AUCTION



1909 Commerce Dr. Vidalia, GA  
Former Office Warehouse of "Harry Moses Construction"



1 Laser Lane Hazlehurst, GA

BIDDING ENDS SEPT. 25TH



Joe Lanier,  
Auction Manager

912.531.7007

joe@southauctiongroup.com

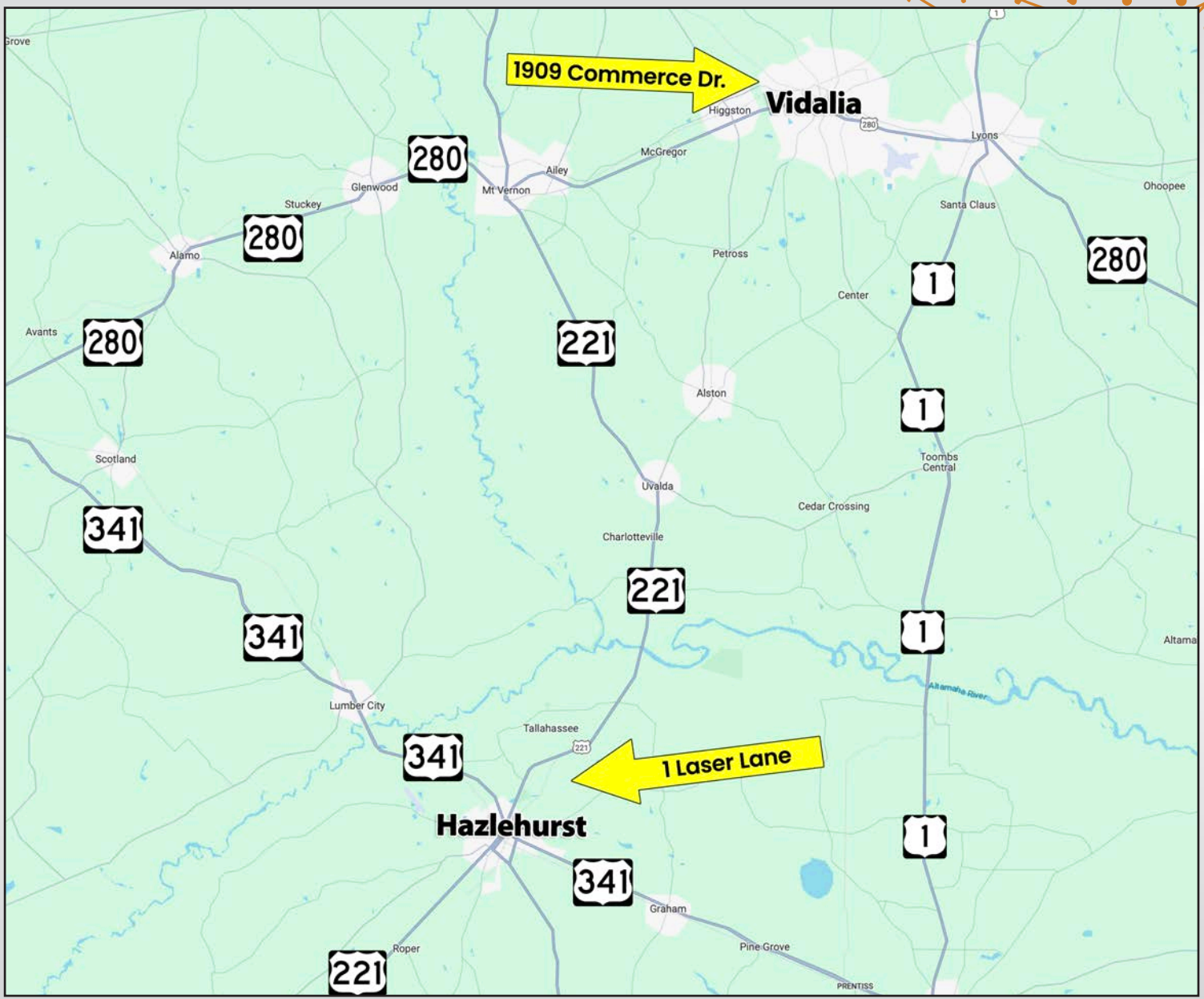
SouthAuction.com



SOUTH  
AUCTION

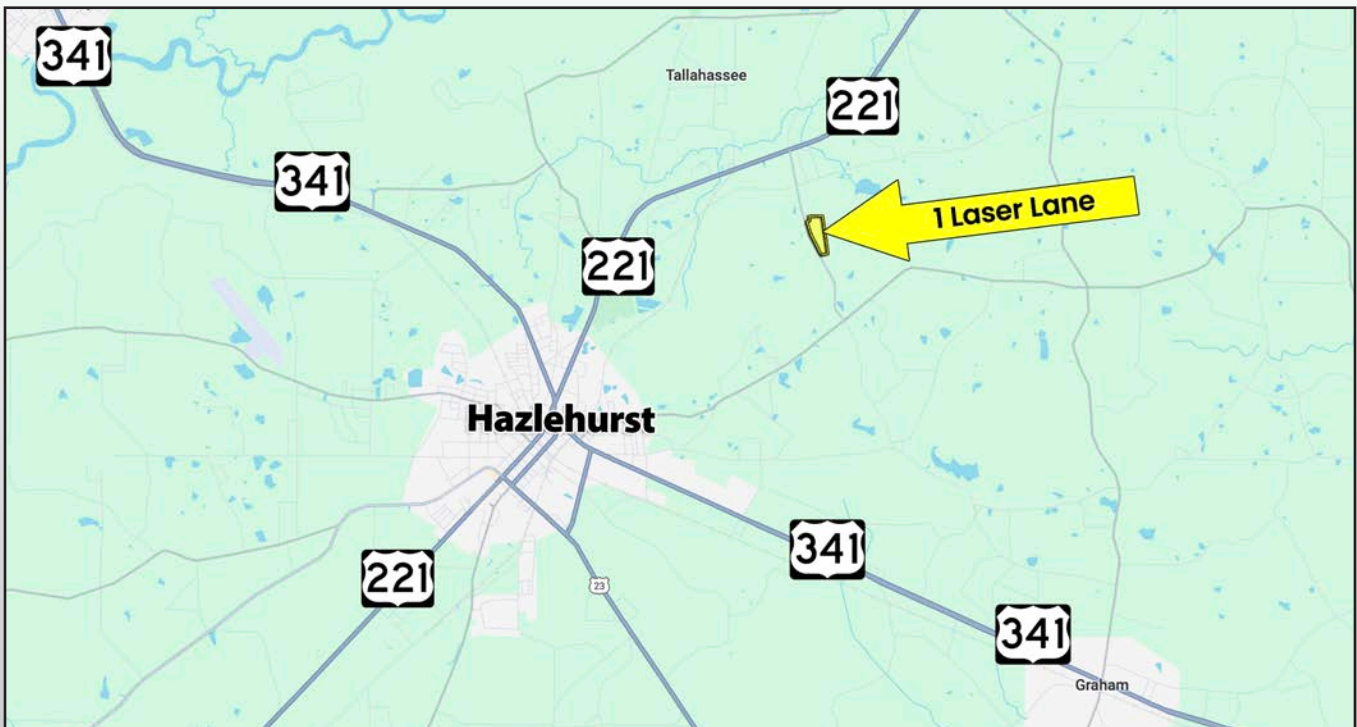


# PROPERTY LOCATIONS





# LOCATION MAPS





# VIDALIA AERIAL MAP

1909 Commerce Dr. Vidalia, GA  
Former Office Warehouse of "Harry Moses Construction"





# VIDALIA PROPERTY DETAILS

1909 Commerce Dr. Vidalia, GA  
Former Office Warehouse of “Harry Moses Construction”

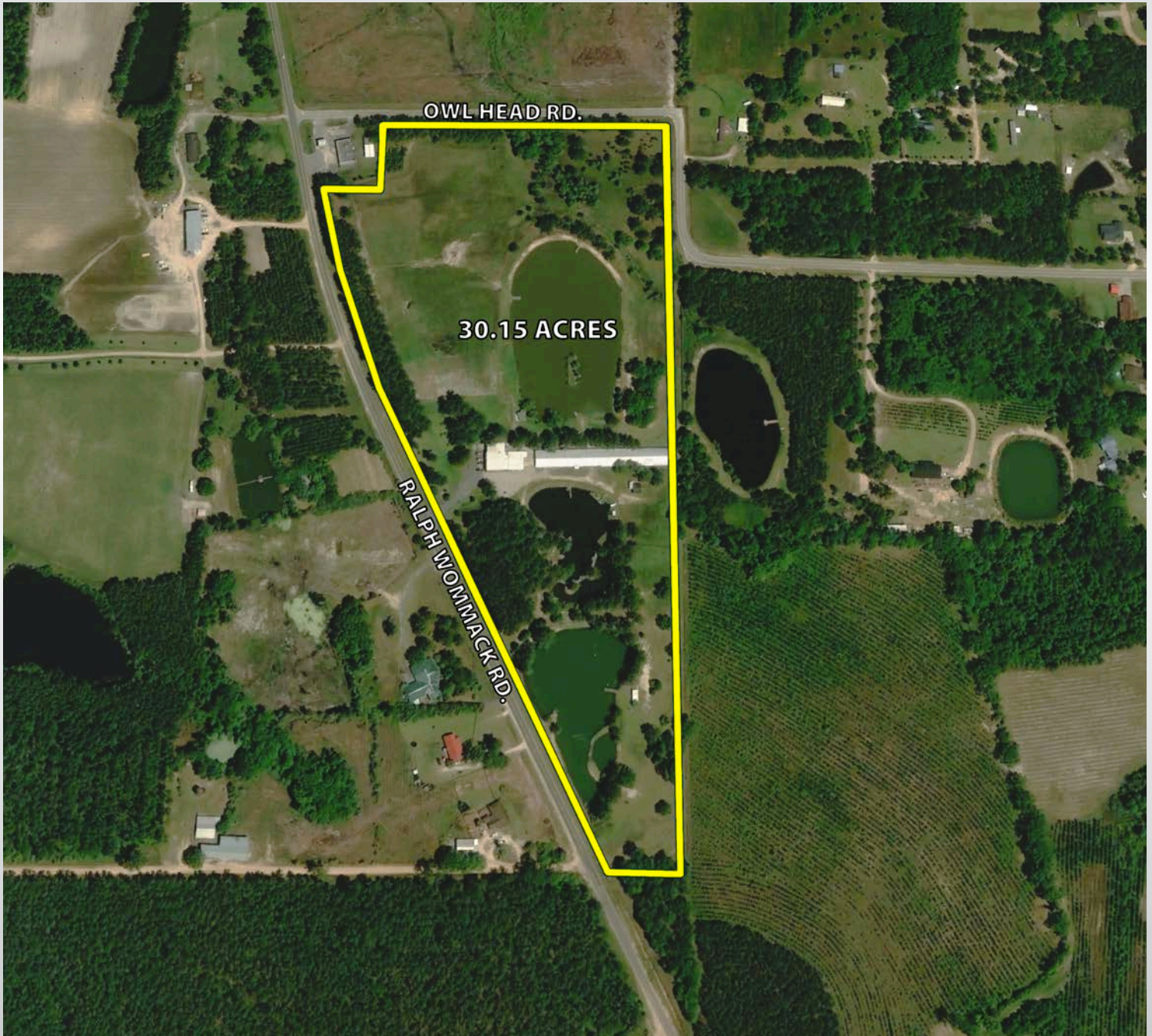


- 2.69 Acres
- 3,100 Heated Sq. Ft.
- 2,500 Sq. Ft. Warehouse
- Property is in move-in condition
- City water and sewer



# HAZLEHURST AERIAL MAP

1 Laser Lane Hazlehurst, GA



Visit [SouthAuction.com](https://SouthAuction.com) for Auction Details & to Place Your Bid.



# HAZLEHURST PROPOSED SUBDIVISION MAP

1 Laser Lane Hazlehurst, GA





# HAZLEHURST PROPERTY DETAILS

1 Laser Lane Hazlehurst, GA



- 30.15 Acres
- 5,000 Sq. Ft. Building with Commercial and Residential Spaces
- Multiple Ponds & Outbuildings
- Approx. 3,000' Paved Road Frontage

Visit [SouthAuction.com](https://SouthAuction.com) for Auction Details & to Place Your Bid.