

2200 GRAND AVENUE PWKY.
AUSTIN, TX 78728
SUITE 103

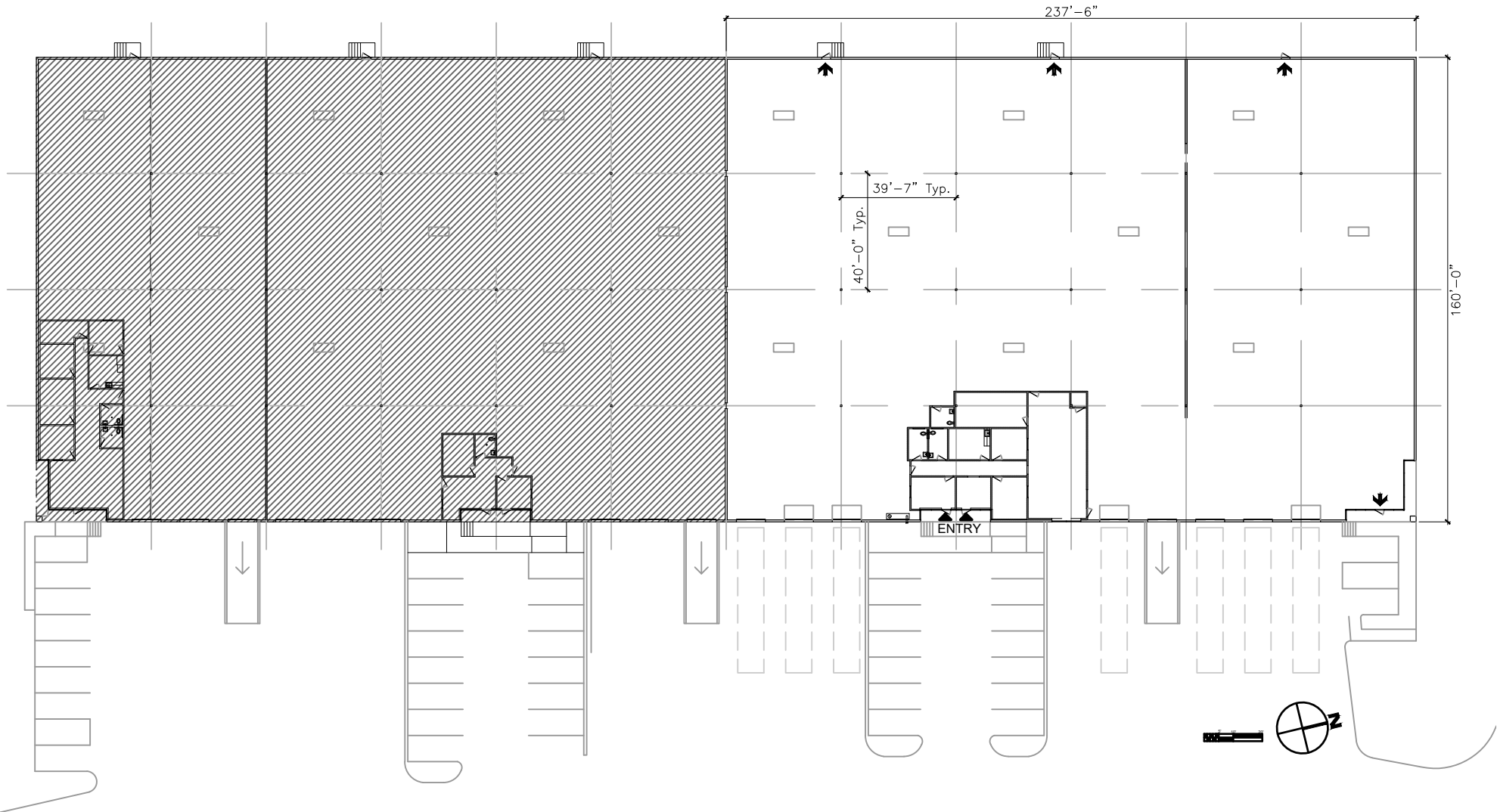
BUILDING FEATURES:

+/- 22'-0" CLEAR HEIGHT
(7) 10' X 10' OH DOCK DOORS
(4) DOCK LEVELERS
(1) RAMP

OFFICE: 2,456 SF

WAREHOUSE: 35,544 SF

TOTAL: 38,000 SF



LINK LOGISTICS

NOT FOR
REGULATORY
APPROVAL,
PERMITTING OR
CONSTRUCTION
04/09/2025

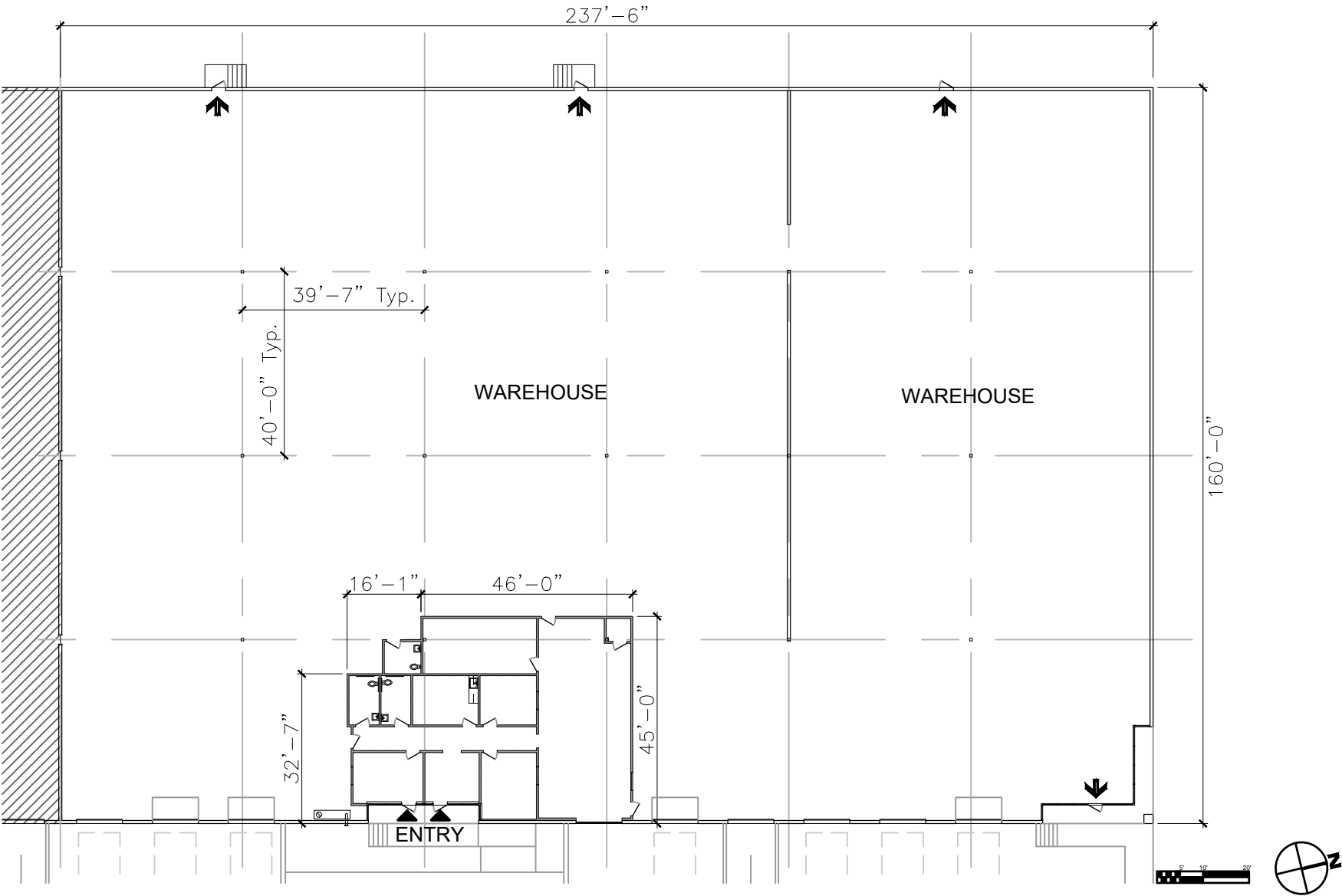
HOLDER +SOUTHWICK ARCHITECTS

H+S

2200 GRAND AVENUE PWKY.
AUSTIN, TX 78728
SUITE 103

BUILDING FEATURES:
+/- 22'-0" CLEAR HEIGHT
(7) 10' X 10' OH DOCK DOORS
(4) DOCK LEVELERS
(1) RAMP

OFFICE: 2,456 SF
WAREHOUSE: 35,544 SF
TOTAL: 38,000 SF



LINK LOGISTICS

NOT FOR
REGULATORY
APPROVAL,
PERMITTING OR
CONSTRUCTION
04/09/2025

HOLDER +SOUTHWICK ARCHITECTS

H+S

2200 GRAND AVENUE PWKY.
AUSTIN, TX 78728
SUITE 103

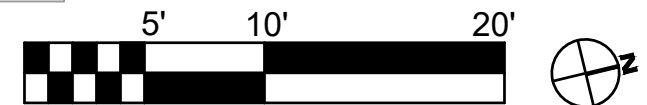
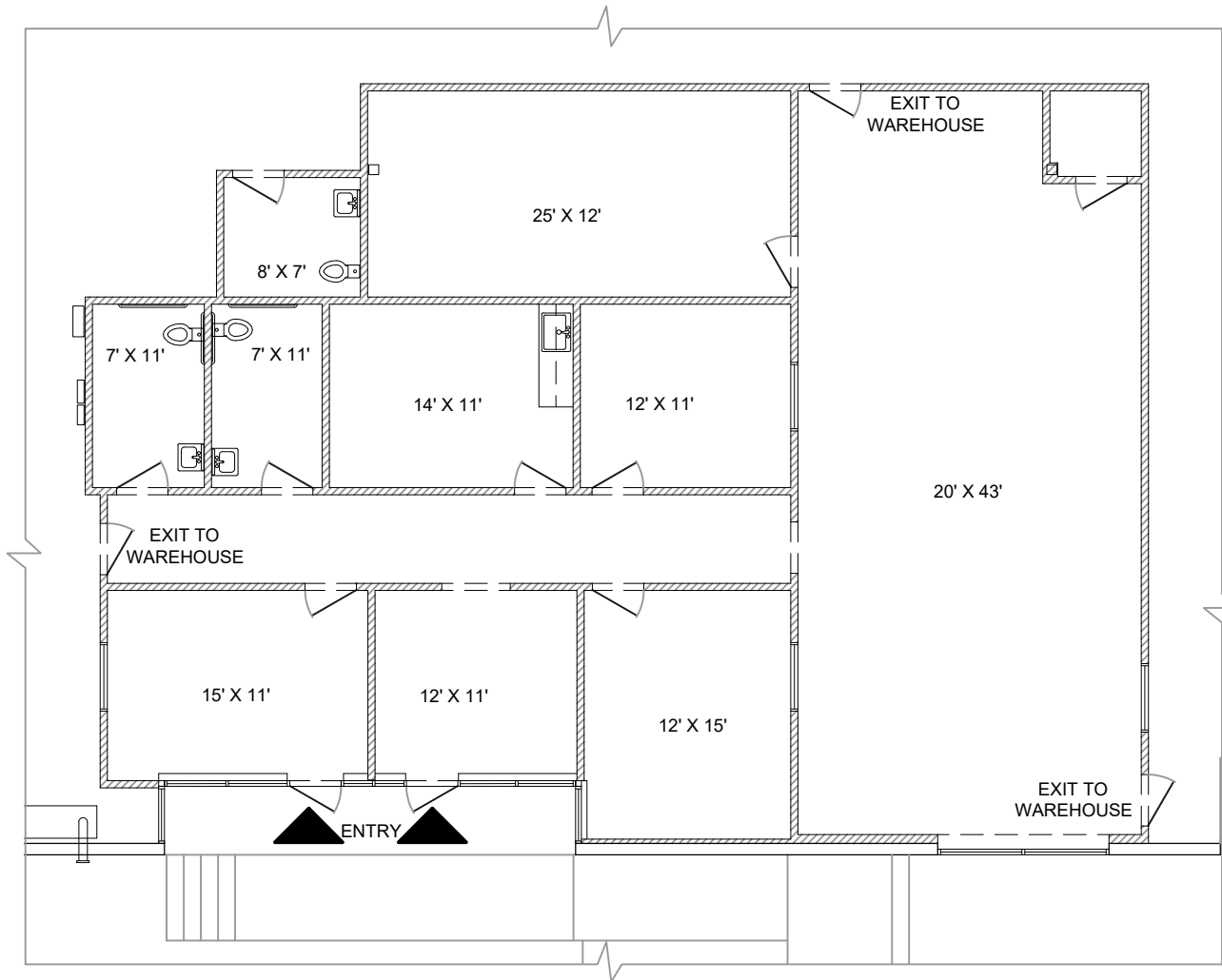
BUILDING FEATURES:

+/- 22'-0" CLEAR HEIGHT
(7) 10' X 10' OH DOCK DOORS
(4) DOCK LEVELERS
(1) RAMP

OFFICE: 2,456 SF

WAREHOUSE: 35,544 SF

TOTAL: 38,000 SF



LINK LOGISTICS

NOT FOR
REGULATORY
APPROVAL,
PERMITTING OR
CONSTRUCTION
04/09/2025

HOLDER +SOUTHWICK ARCHITECTS

H+S