



MOVE-IN READY MEDICAL OFFICE SPACE FOR LEASE

4441 Long Prairie Road, Suite 200
Flower Mound, TX

LOCATION:

Located in central Flower Mound, Texas, off Long Prairie Road (FM 2499). This building is part of a condominium development with other professional and medical office tenants, situated within 0.5 miles of Texas Health Presbyterian Hospital and the River Walk at Central Park mixed-use development. There is a variety of retail and restaurant offerings in proximity to the site along this major arterial road.

SIZE:

- Suite 200 – 2,088 RSF

LEASE RATE:

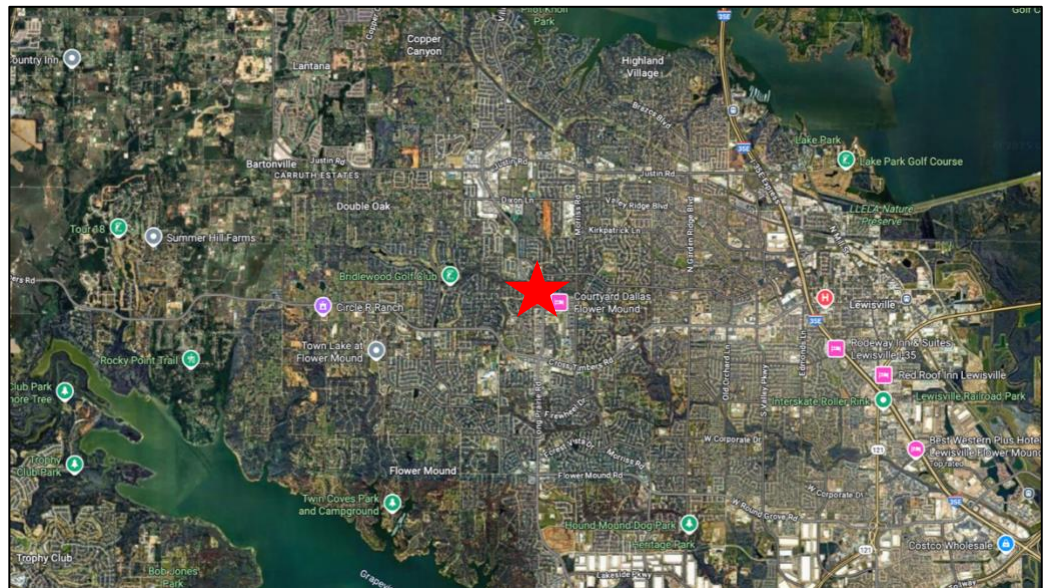
- \$23.50/SF/YR Base Rent + NNNs

HIGHLIGHTS:

- Move-in Ready Medical Office Space
- Floor plan features spacious reception/waiting area and four exam rooms with sinks
- Year Built: 2020

AVAILABILITY:

- Immediate



FOR INFORMATION:

Phyllis Garcia | Diana Pergande

972.899.1851 | Phyllis@BridgeRealtyTexas.com | Diana@BridgeRealtyTexas.com

www.BridgeRealtyTexas.com

400 Parker Square, Suite 270H | Flower Mound, TX 75028

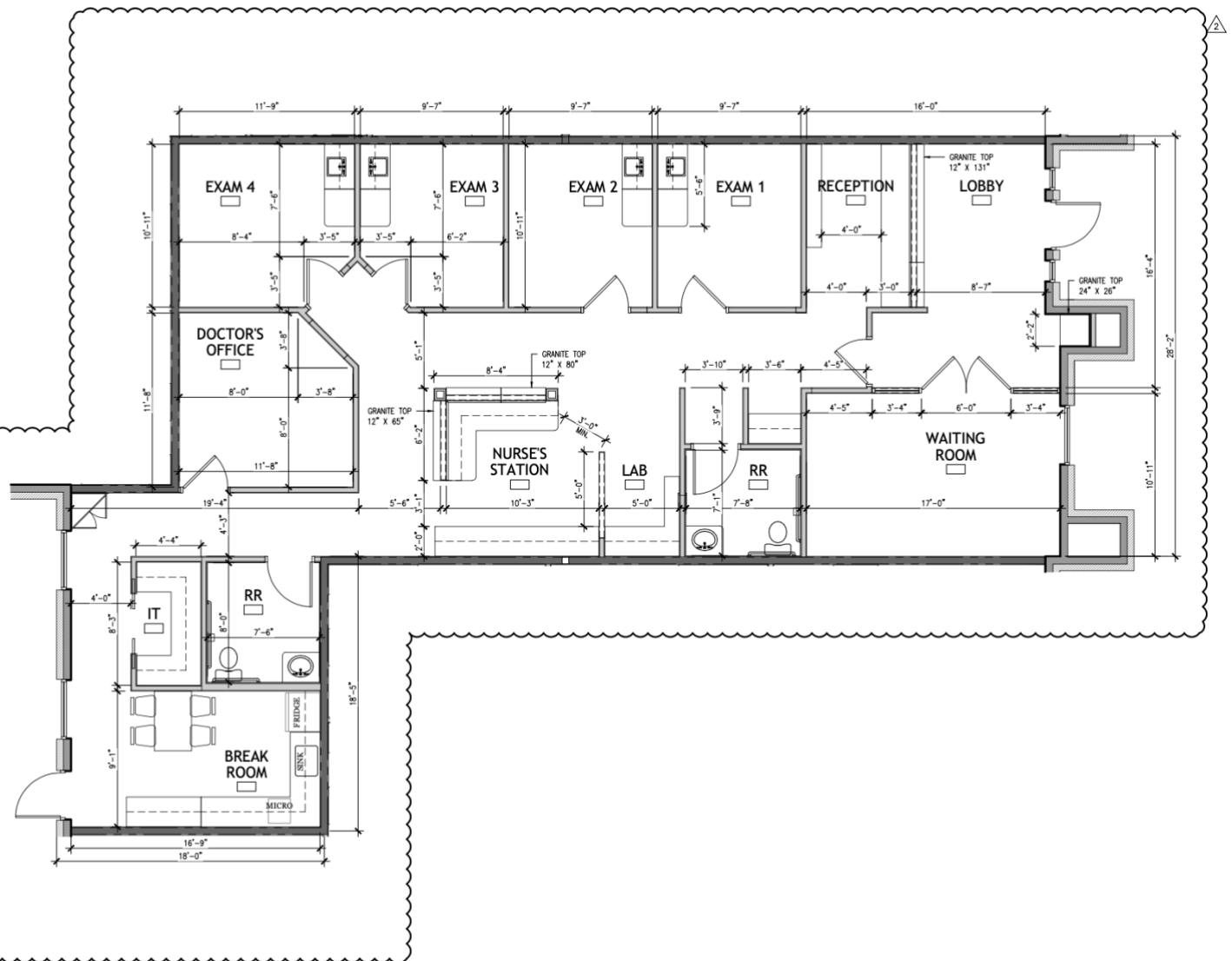
This information is believed to be accurate, but no representation or warranty, express or implied, as to its accuracy or completeness is made by any party. The presentation of this property is submitted subject to errors, omissions, change of price or prior sale or lease, or withdrawal without notice.



FLOOR PLAN

2,088 SF – Medical Office Condo

4441 Long Prairie Road, Suite 200
Flower Mound, TX





PHOTOS

4441 Long Prairie Road, Suite 200
Flower Mound, TX

