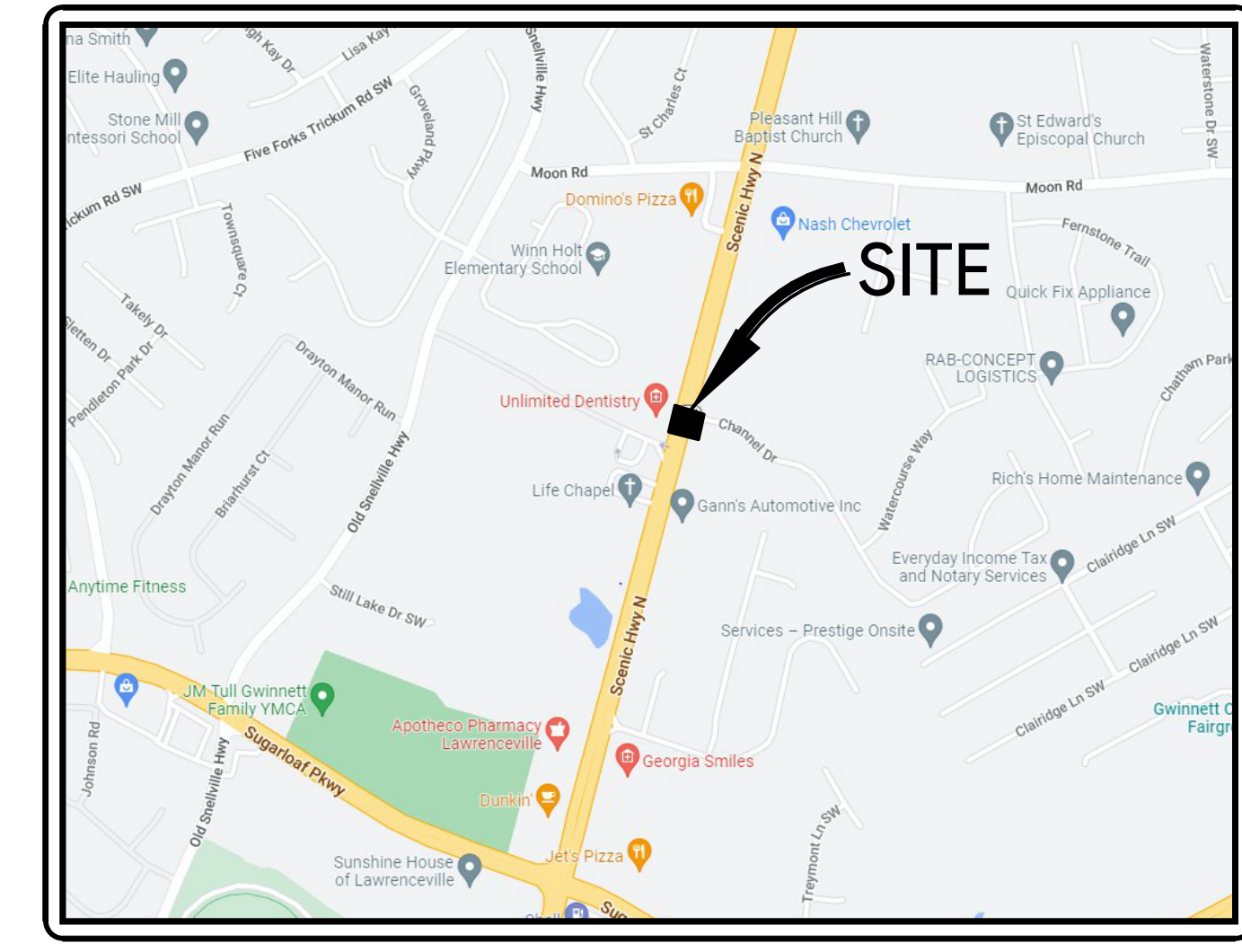
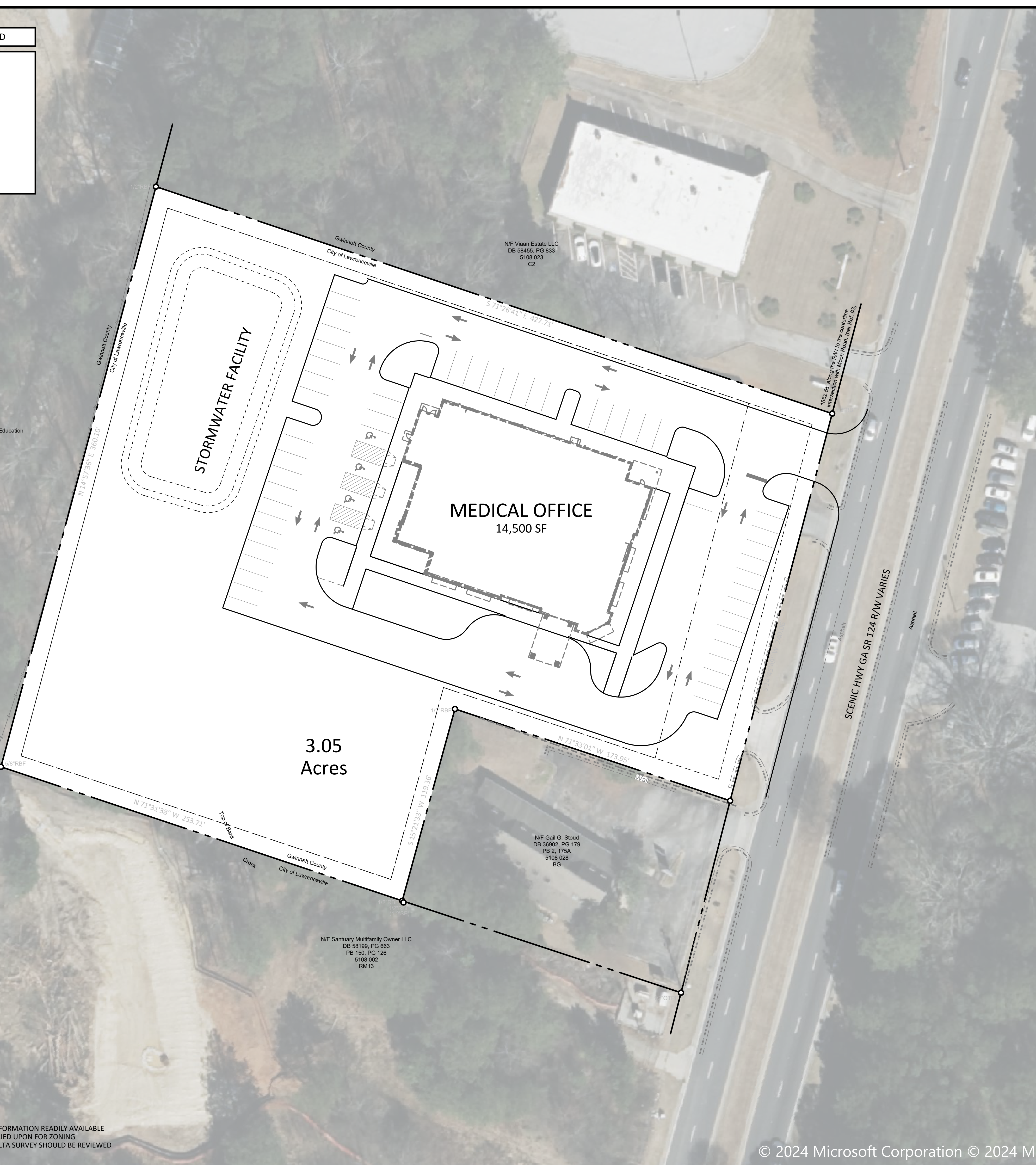


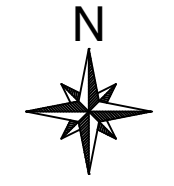
ASPHALT PAVING SYMBOLS LEGEND

- ASPHALT PAVEMENT STANDARD DUTY**
1" 9.5 MM TYPE II SUPERPAVE HMA SURFACE COURSE
2" 12.5 MM SUPERPAVE HMA BASE COURSE
6" GRADED AGGREGATE BASE
- ASPHALT PAVEMENT HEAVY DUTY**
2" 9.5 MM TYPE II SUPERPAVE HMA SURFACE COURSE
2" 19 MM SUPERPAVE HMA BINDER COURSE
8" GRADED AGGREGATE BASE
- DOT OR RW PAVING**
2" 9.5 MM TYPE II SUPERPAVE HMA SURFACE COURSE
2" 19 MM SUPERPAVE HMA BINDER COURSE
8" GRADED AGGREGATE BASE

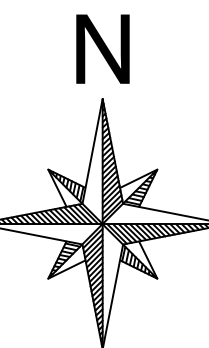
NOTES:
1. AGGREGATE BASE PER GDOT 815 OR EQUIVALENT.
2. HOT MIX ASPHALTIC COURSES PER GDOT 828 OR EQUIVALENT.
3. GEOTECHNICAL REPORT MAY SUPERSEDE REQUIREMENTS LISTED ABOVE.



VICINITY MAP



SCALE: 1" = 30'



SitePlans-USA

SitePlans-USA.com

PRELIMINARY SITE PLAN
729 SCENIC HWY
729 SCENIC HWY
LAWRENCEVILLE, GA 30046

CP3
22020

MARCH 27, 2026

REVISIONS

NOTES:
1. THE PREPARATION OF THIS SITE PLAN IS BASED UPON INFORMATION READILY AVAILABLE DURING THE DILIGENCE PROCESS AND SHOULD NOT BE RELIED UPON FOR ZONING ENTITLEMENTS. ZONING, LEGAL ENTITLEMENTS AND AN ALTA SURVEY SHOULD BE REVIEWED BY AN ATTORNEY.

Friday, September 26, 2025 02:03:48pm (GMT-04:00) - 729_Scenic_Hwy_Storage_2020_CP3_ASP [CP3]
 S:\Information\VA\Term\VA\Projects\2025\02\03\48pm (GMT-04:00) - 729_Scenic_Hwy_Storage_2020_CP3_ASP [CP3]
 Project: S:\Information\VA\Term\VA\Projects\2025\02\03\48pm (GMT-04:00) - 729_Scenic_Hwy_Storage_2020_CP3_ASP [CP3]