

westmont, illinois

# 700 E OGDEN AVE

Fully Renovated High Class Building  
Available For Lease

RAWLY LANTZ, SIOR

(630) 729-7944

rlantz@cawleycre.com

JUSTIN HARRIS

(630) 810-1897

jharris@cawleycre.com



## available

Suite 101: 2,184 SF

Suite 111: 1,584 SF

Suite 307: 1,571 SF (Move In Ready)

## pricing

Lease Rate: Subject to Offer

- ✓ Fully Renovated High Class Building
- ✓ Easy Access at Ogden Ave and Rt 83
- ✓ Professionally Managed
- ✓ In-House Buildouts
- ✓ Storage Space Available to Tenants



The information contained in this marketing brochure has been secured from sources we believe to be reliable. All information is presented "as is" and Cawley CRE makes no representations or warranties, expressed or implied, as to the accuracy of the information. All information references to, but not limited to, acreage, square footage, age and other measurements are approximations, based on reliable sources. All interested parties to purchase, or to lease, should conduct an independent, thorough, investigation of the property, and verify all information. Any reliance to the information contained within this marketing material is solely at your own risk, and the interested party bears all risk for any inaccuracies. The property owner reserves the right, at its sole discretion, to reject any offer or expressions of interest, and/or to terminate, or withdraw status of availability, at any time, without notice.

westmont, illinois

# 700 E OGDEN AVE

Fully Renovated High Class Building  
Available For Lease

**RAWLY LANTZ, SIOR**

(630) 729-7944

rlantz@cawleycre.com

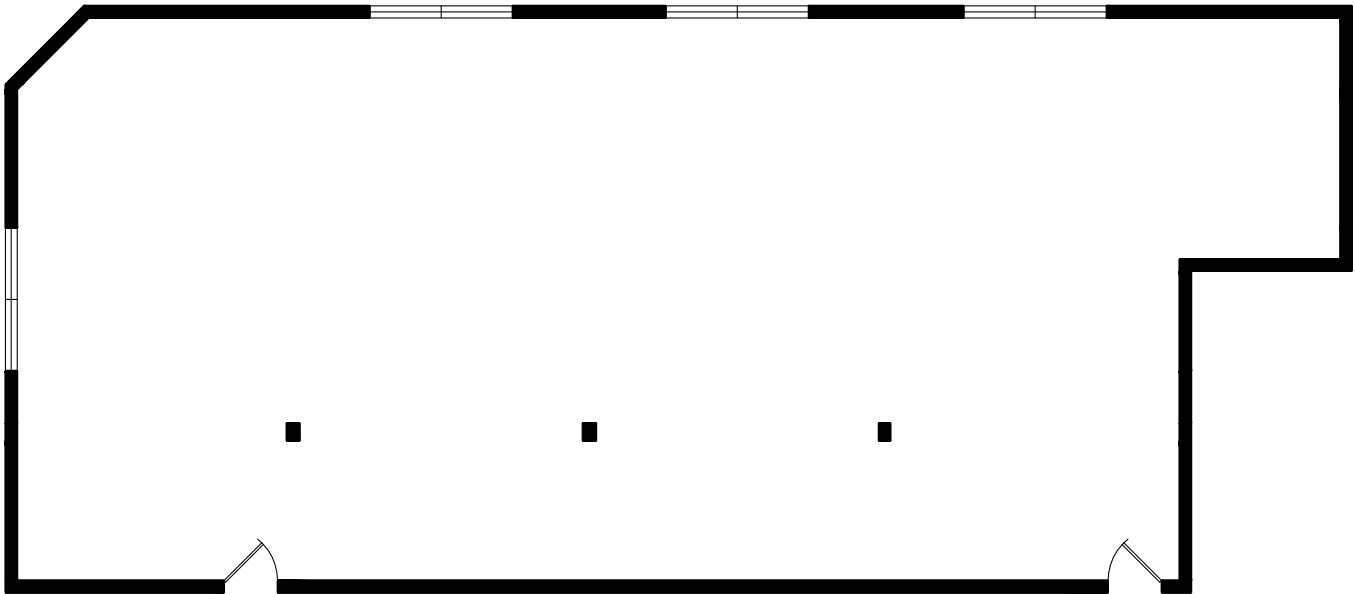
**JUSTIN HARRIS**

(630) 810-1897

jharris@cawleycre.com

suite 101 | 2,184 SF

---



westmont, illinois

# 700 E OGDEN AVE

Fully Renovated High Class Building  
Available For Lease

RAWLY LANTZ, SIOR

(630) 729-7944

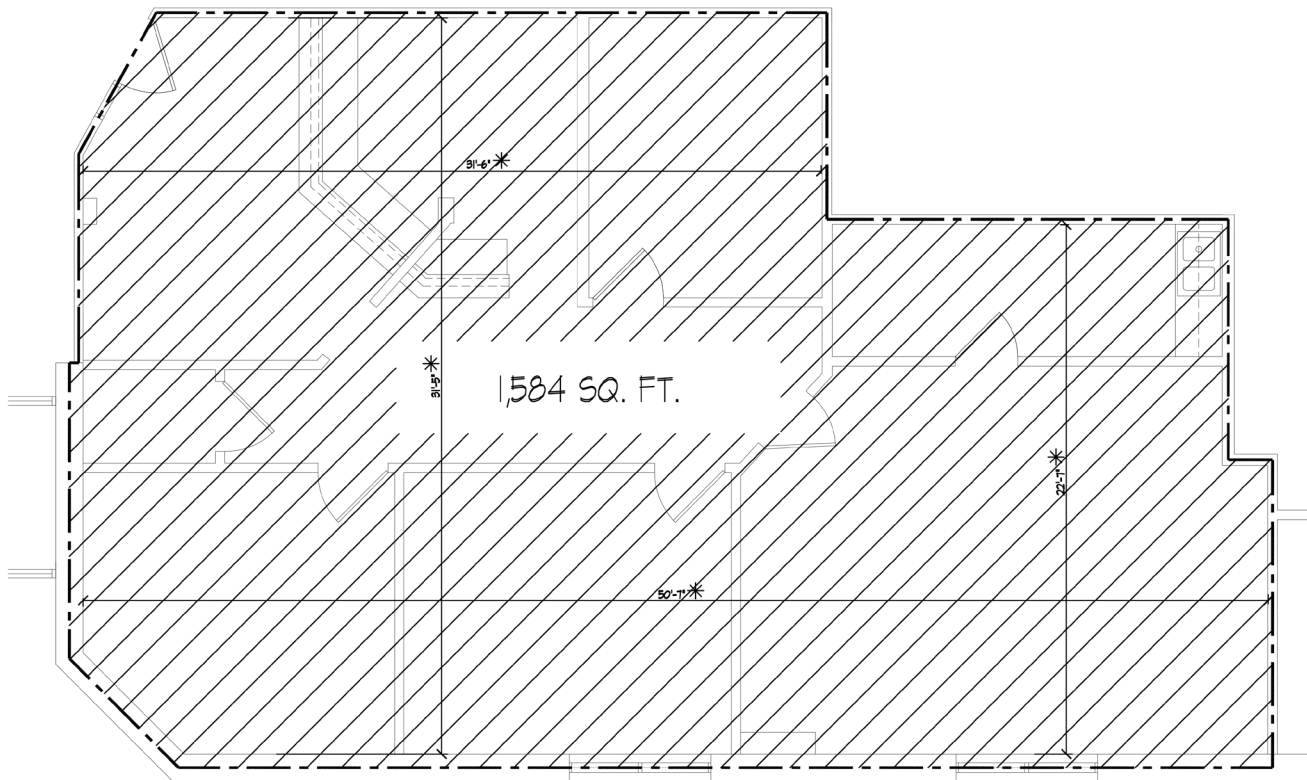
rlantz@cawleycre.com

JUSTIN HARRIS

(630) 810-1897

jharris@cawleycre.com

suite 111 | 1,584 SF



westmont, illinois

# 700 E OGDEN AVE

Fully Renovated High Class Building  
Available For Lease

RAWLY LANTZ, SIOR

(630) 729-7944

rlantz@cawleycre.com

JUSTIN HARRIS

(630) 810-1897

jharris@cawleycre.com

suite 307 | 1,571 SF

move in ready

