



162 Glade Drive, Kittanning, PA 16201

Listing Price:

\$495,000

Property Highlights:

- Located in Armstrong County, this property is a $\pm 4,700$ SF cold storage building with a 1.72 acre lot (± 0.68 acres of paved parking and laydown surrounding the building).
- The $\pm 4,700$ SF availability is further broken down into the following:
 - $\pm 80\%$ warehouse:
 - 3 ($\pm 12' \times 12'$) drive ins
 - 1 dock
 - Large freezer-cooler unit in-place (removable)
 - $\pm 20\%$ office
- Located 0.6 miles from Route 422, the property features immediate access to Route 28 conveniently positioning the building in an accessible location.



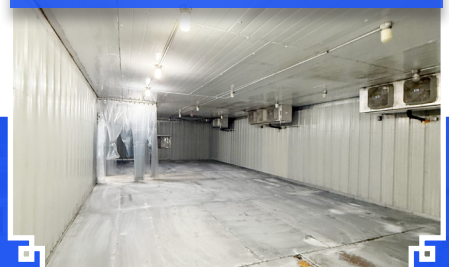
Ample Laydown Yard



Open Office Space



In-Place Freezer/Cooler



Experience an established industrial presence and history, unmatched accessibility, and a strategic location.

View Interactive
Map Here



Key Distances:



Pittsburgh Intl Airport
55 minutes



Route 422
0.5 miles



Route 28
1.2 miles



Downtown Pittsburgh
40 minutes



CONTACT OUR TEAM TODAY.



Cody Hunt

Senior Associate | Pittsburgh
Industrial Brokerage
P: 412 515 8533
cody.hunt@colliers.com



Diron Duah

Associate | Pittsburgh
Industrial Brokerage
P: 412 235 9769
diron.duah@colliers.com



John Bilyak, CCIM, SIOR

Market Leader, Principal | Pittsburgh
Industrial Brokerage
P: 412 515 8522
john.bilyak@colliers.com