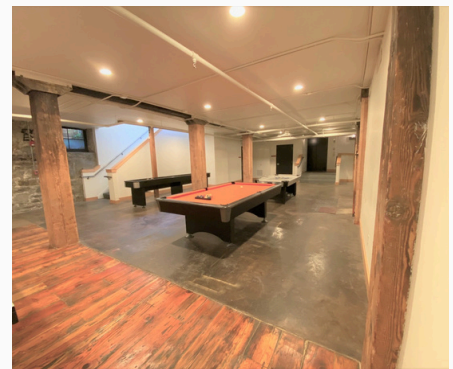


CREATIVE OFFICE SPACE

FOR LEASE

3,763-7,673 SF AVAILABLE



Make this space yours today!

Located on the corner of 2nd and Lincoln in the historic Freeman Center, you will find an amazing opportunity to lease this prime office space. Both the 1st floor and basement suites are available to lease separately or they can be combined for larger companies. The first floor is an open concept floor plan.

Both suites have fiber infrastructure, cameras and alarm system which allows for an easy move in ready space. Paid parking lots and street parking area available right outside your door. This space is perfect for your new tech start up or established business! The open concept allows for greater employee collaboration.

**170 S Lincoln Street
Spokane, WA 99201**

Plug and Play Workspace!

- ✓ Efficient AC system in server room
- ✓ Existing Century Link fiber
- ✓ Extensive networking run to all desk and conference room locations!
- ✓ Alarm System & Camera System
- ✓ Building is fully Sprinklered
- ✓ Electronic keypad entry

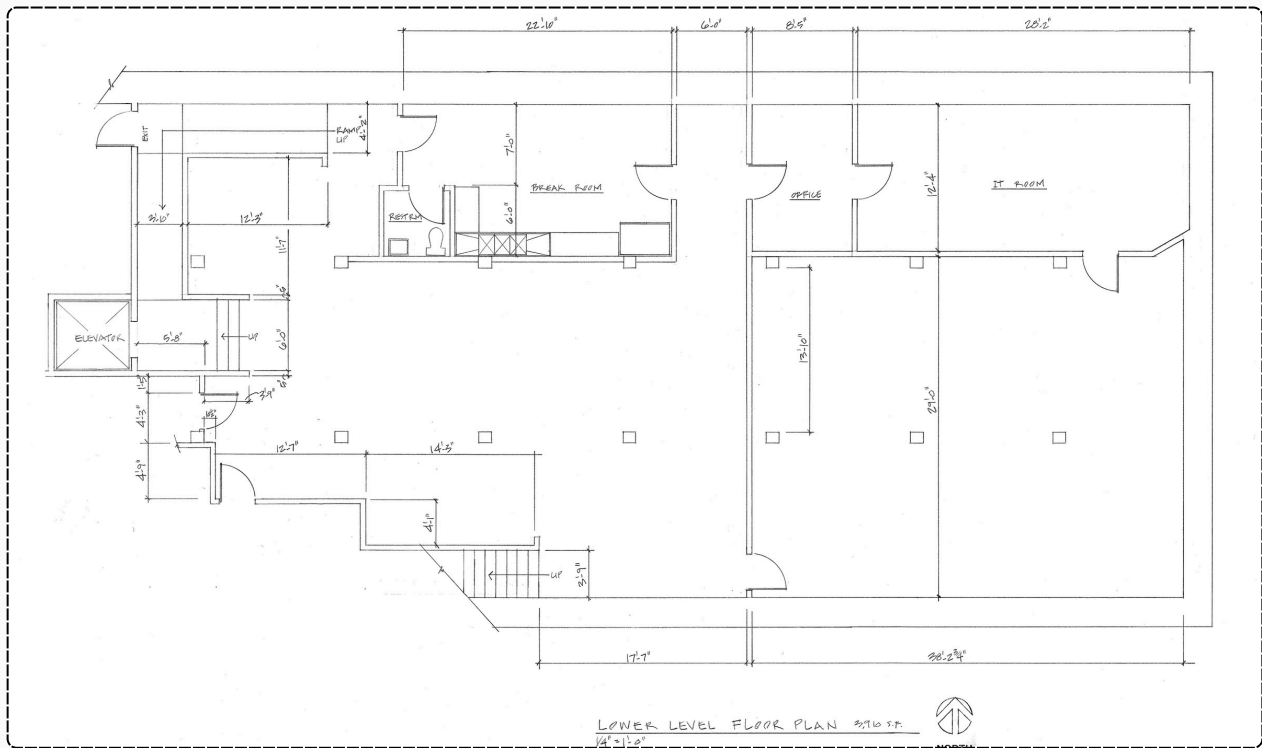
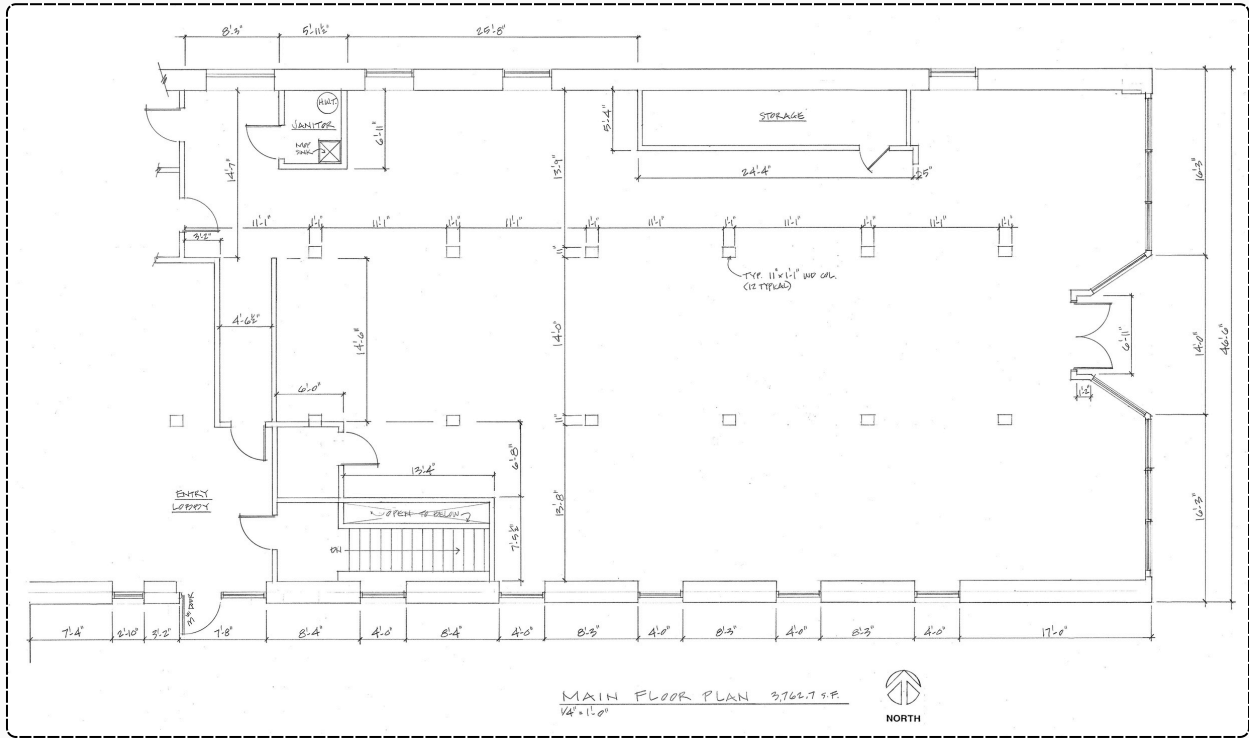
Ready to take your business to the next level? Available for immediate occupancy.

☎ (907) 841-5913

✉ fallforward@persistentmovement.com

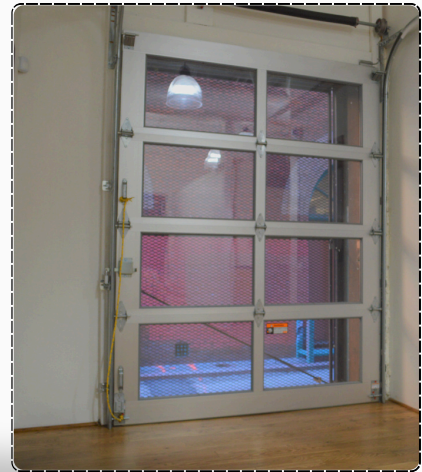
This information has been secured from sources we believe to be reliable, but we make no representations or warranties, expressed or implied, as to the accuracy of the information. References to square footage or age are approximate. Tenant must verify the information and bears all risks for any inaccuracies.

FLOOR PLANS

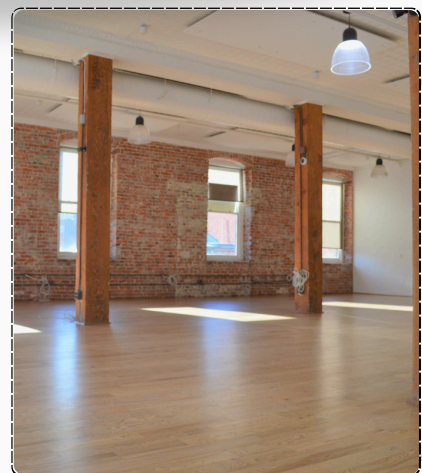
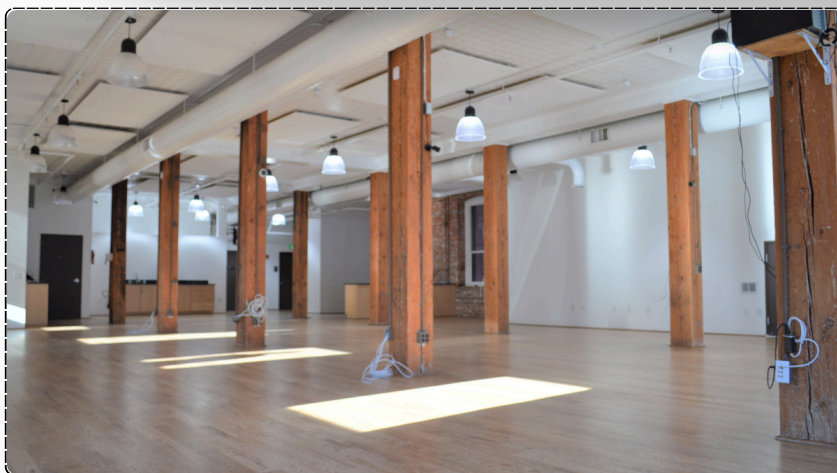


FIRST FLOOR

\$15/SF NNN
3,763 SF AVAILABLE



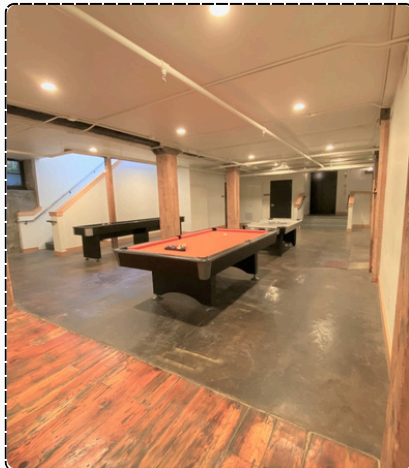
Step into this open space with shiny red oak floors, a cool coffee bar, a designated server room, and private garage door that rolls up like a boss. Whether you waltz in through the main building entrance or sneak in through your private door on Lincoln Street, the world is your oyster! Need more space to make the vibe your own? Check out the available basement space of 3,910 SF.



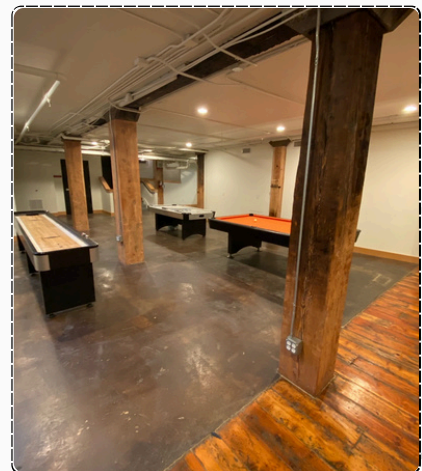
fallforward@persistentmovement.com

BASEMENT FLOOR

\$14.50/SF NNN
3,910 SF AVAILABLE

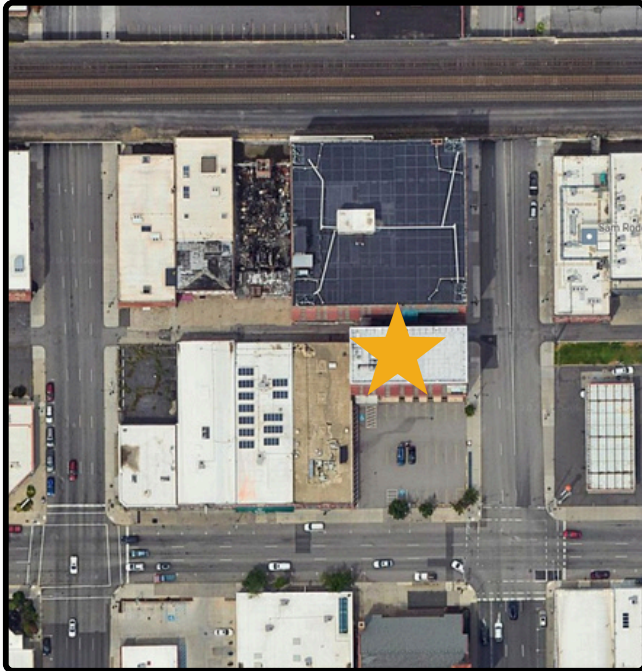
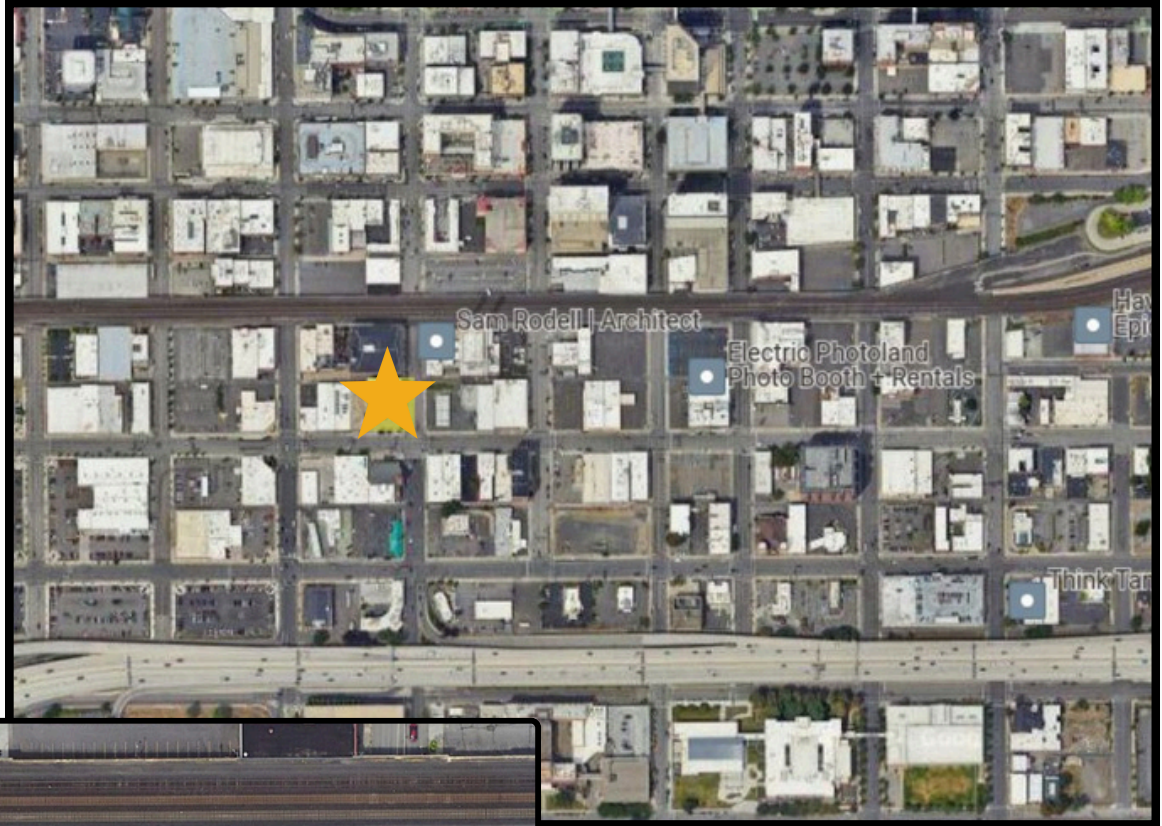


Seeking some solitude or craving extra elbow room? Dive into the basement suite accessible through the first floor or a swanky elevator ride. Check out your private office, a spacious server room, conference area, your very own bathroom hideaway, and a kitchen to whip up your culinary masterpieces during your break!




fallforward@persistentmovement.com

170 S Lincoln Street Spokane, WA 99201



Ready to take your business to the next level? Available for immediate occupancy.

 (907) 841-5913

 fallforward@persistentmovement.com

This information has been secured from sources we believe to be reliable, but we make no representations or warranties, expressed or implied, as to the accuracy of the information. References to square footage or age are approximate. Tenant must verify the information and bears all risks for any inaccuracies.