

FOR LEASE

±1,150 SF OF SECOND FLOOR OFFICE SPACE ON
OCEAN PARK BLVD

1730 OCEAN PARK BLVD

SANTA MONICA, CA 90405



A DIVISION OF



PAUL BREHME

Principal
310-899-2755
pbrehme@leewestla.com
DRE# 01476686

LEE & ASSOCIATES LOS ANGELES WEST, INC.

1508 17th St. Santa Monica, CA 90404
310-899-2700
www.leewestla.com
DRE# 01222000

EXECUTIVE SUMMARY

1730 OCEAN PARK BLVD – SUITE A	
ASKING RENT:	\$3.50 / SF (Full Service Gross)
AVAILABLE SF:	±1,150 SF
SPACE TYPE:	Office
OCCUPANCY:	Immediate
PARKING:	Two @ \$150 / month
ZONING:	LAC2
LOCATION:	Second Floor

1730 OCEAN PARK BLVD – SUITE A

- Consists of reception area, three private offices, two areas that contain a total of seven workstations, kitchen, and a bathroom.
- Has two beautiful sun-lit offices overlooking Ocean Park Blvd below
- Hardwood floors throughout
- Access from the street and from the rear.
- Perfect for attorneys, accountants, or any small business for that matter.

Paul Brehme

Principal
310-899-2755
pbrehme@leewestla.com
DRE# 01476686

PROPERTY HIGHLIGHTS

- Smaller building on highly desirable Ocean Park Blvd
- Lots of amenities within walking distance
- Short drive to Main Street, Downtown Santa Monica, the Santa Monica Business Park, and the Santa Monica Airport
- Walkscore of 80 (Very Walkable)
- Neighboring Amenities include Local Kitchen & Wine Bar,, Thyme Café and Market, Bob's Market, The Counter, Starbucks, Handel's Ice Cream, Ghisallo, and Tre Mani.



Lee & Associates | Los Angeles West, Inc.

1508 17th St. Santa Monica, CA 90404
310-899-2700
www.leewestla.com
DRE# 01222000

No warranty or representation is made to the accuracy of the foregoing information. Terms of sale or lease are subject to change or withdrawal without notice.



EXECUTIVE SUMMARY



A DIVISION OF
LEE & ASSOCIATES

INTERIOR



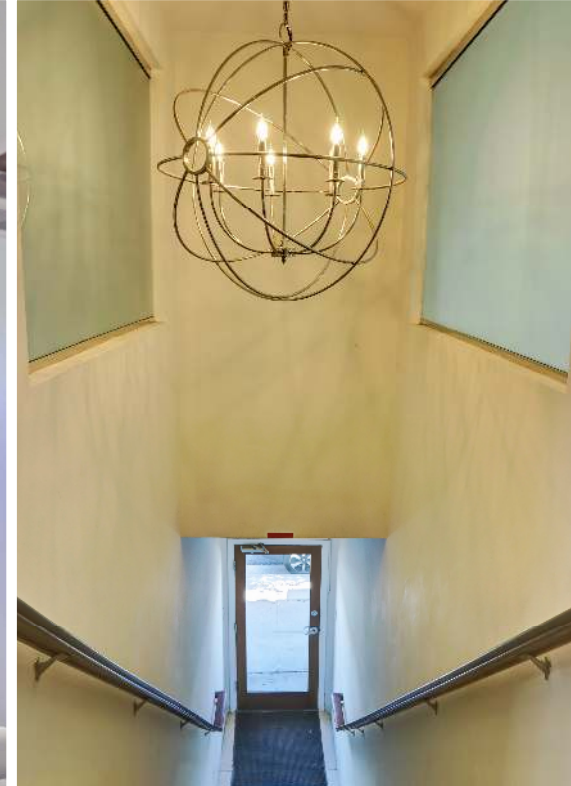
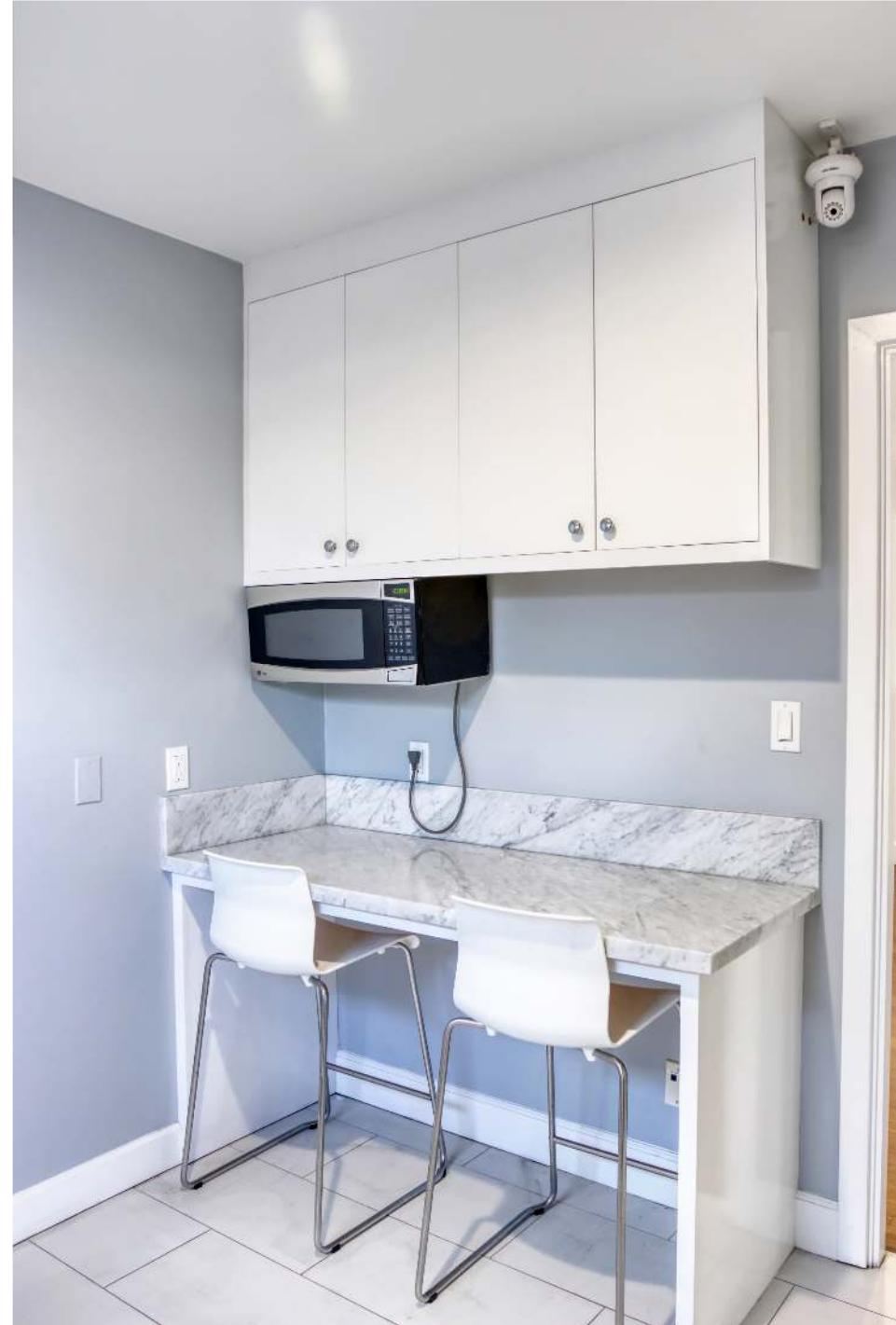
A DIVISION OF
LEE & ASSOCIATES

INTERIOR



A DIVISION OF
LEE & ASSOCIATES

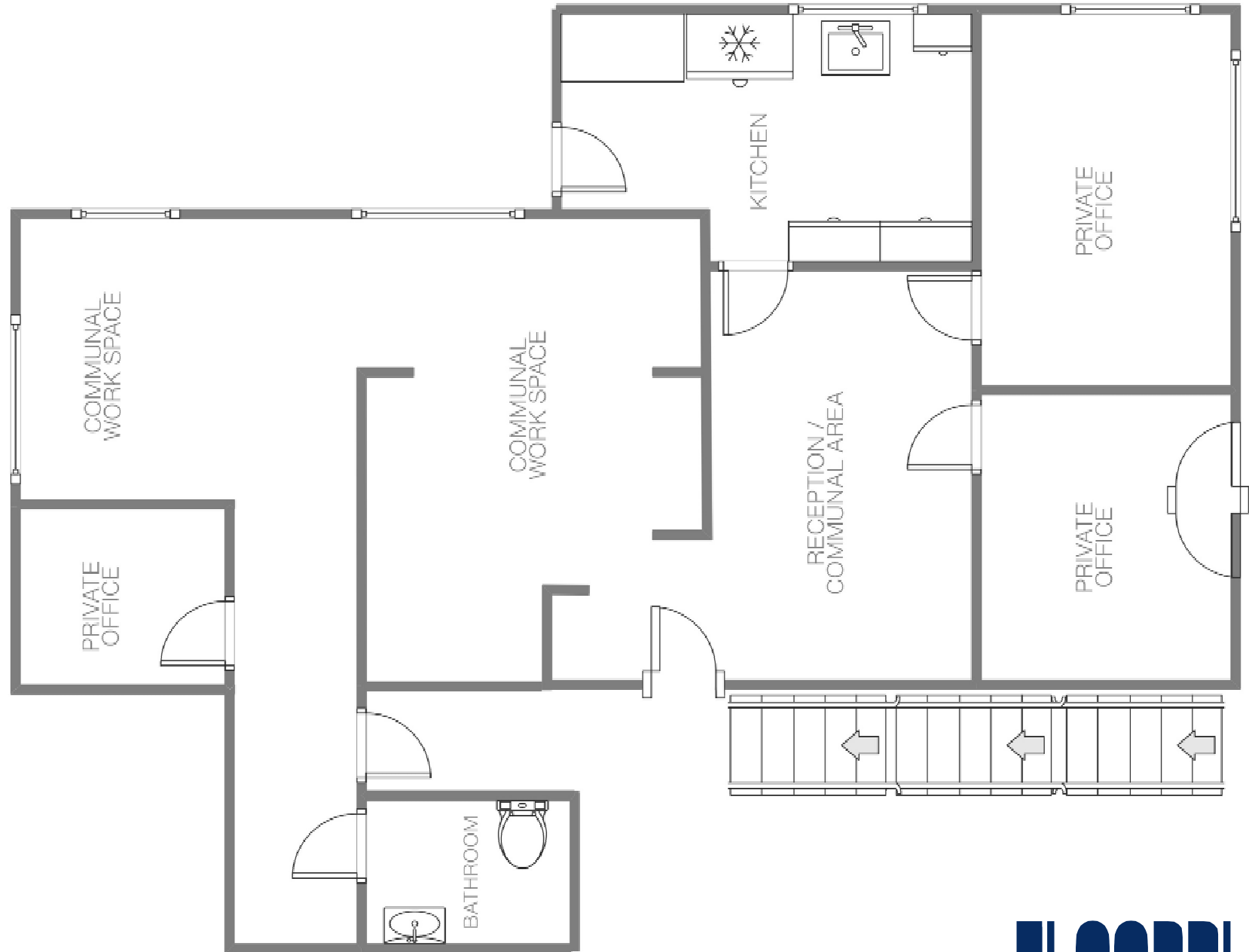
INTERIOR



A DIVISION OF
LEE & ASSOCIATES

INTERIOR

FLOORPLAN





A DIVISION OF
LEE & ASSOCIATES

AERIAL PHOTO

