

FOR LEASE

Rare Small Retail Unit

1013 Parsons Road SW
Edmonton, AB



Ian Fletcher

(780) 913-4663

IanFletcher@MaxWellCommercial.ca

Chris Karampelas

(780) 450-6300

Chris@MaxWellRealty.ca

MaxWell Commercial

4107 99 Street

Edmonton, AB T6E 3N4

(780) 450-6300

www.MaxWellCommercial.ca



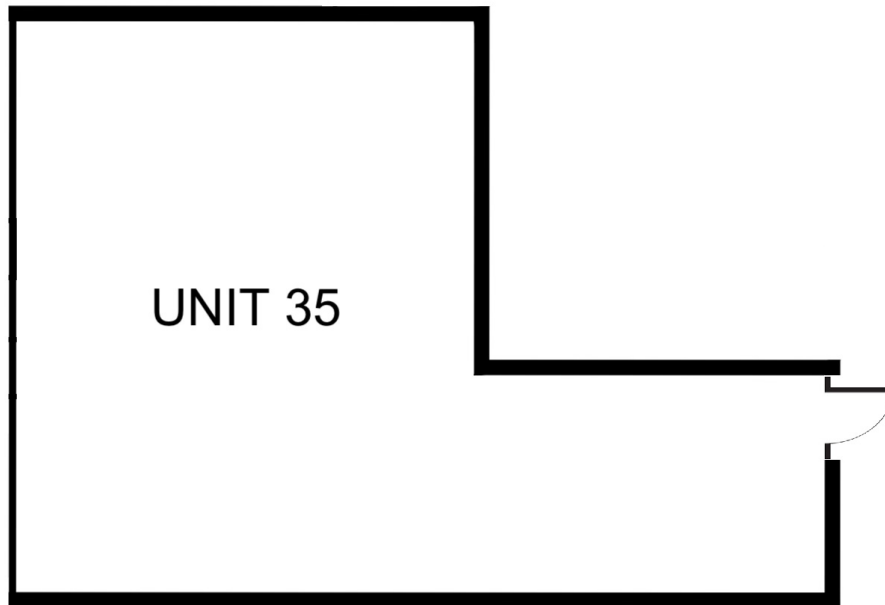
Commercial

MaxWell Polaris

FOR LEASE

Rare Small Retail Unit

**1013 Parsons Road SW
Edmonton, AB**



Ian Fletcher

(780) 913-4663

IanFletcher@MaxWellCommercial.ca

Chris Karampelas

(780) 450-6300

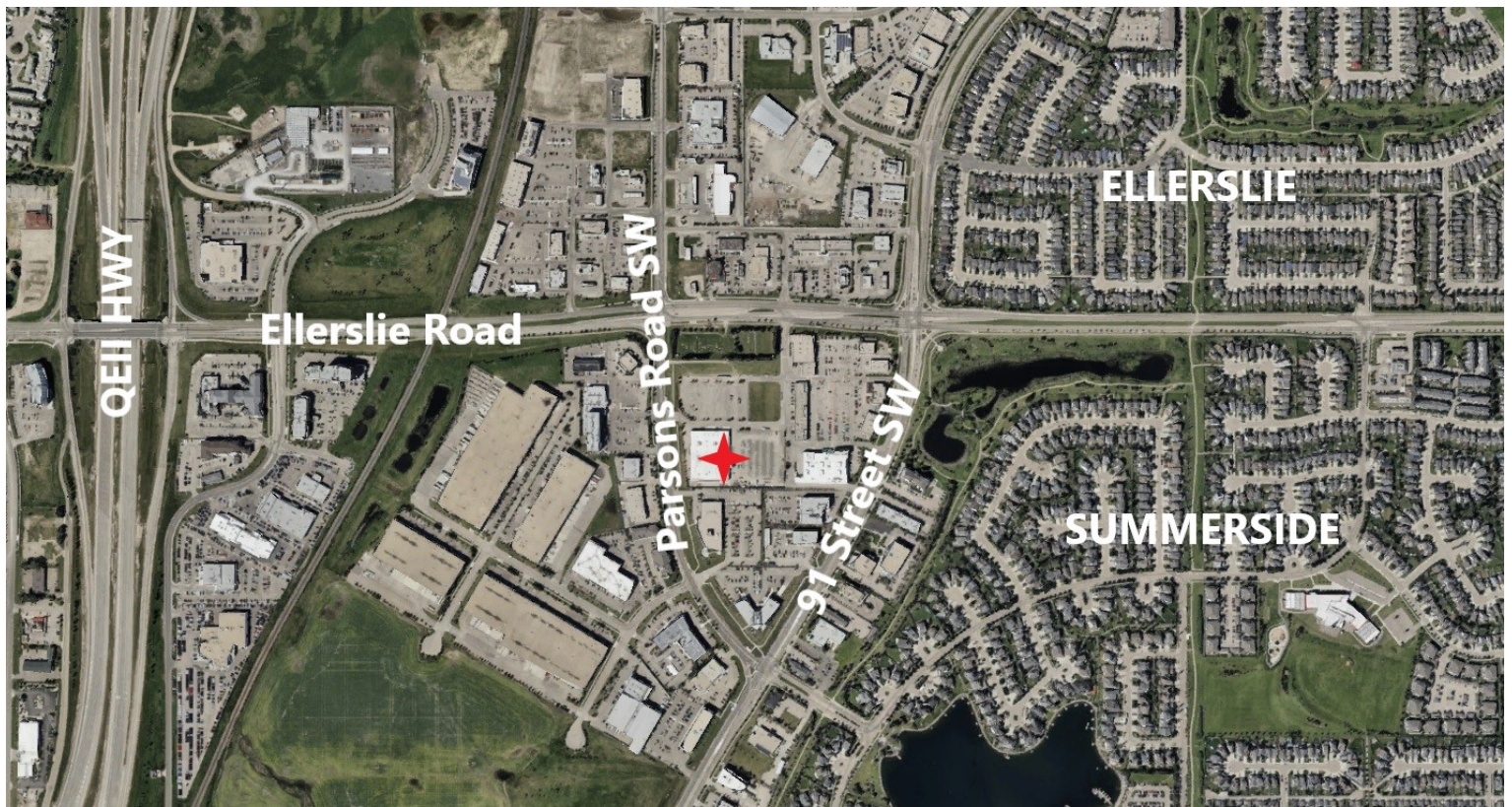
Chris@MaxWellRealty.ca

FOR LEASE

Rare Small Retail Unit

1013 Parsons Road SW
Edmonton, AB

SIZE	784 SF +/-
POSSESSION	Immediate
PARKING	Scramble
CEILING HEIGHT	18'-24'
SIGNAGE	Building & Pylon
BASE RENT	\$40 PSF
ADDITIONAL RENT	\$18.35 PSF
ZONING	CG Link to CG Zoning Bylaw



Ian Fletcher
(780) 913-4663
IanFletcher@MaxWellCommercial.ca

Chris Karampelas
(780) 450-6300
Chris@MaxWellRealty.ca