

**Jamison** Commercial RE  
New York City

**230**  
E. 106th Street  
New York City



## Community Facility Building for Lease

- Move-in-ready condition, plug and play
- Three level building in fantastic condition
- 38 perimeter private offices
- 18 interior break out rooms/interior offices
- Ample workstations
- Kitchenet and space for adjacent lounge area
- ADA compliant bathrooms and elevator

**For Lease**  
Rentable sq ft  
20,068

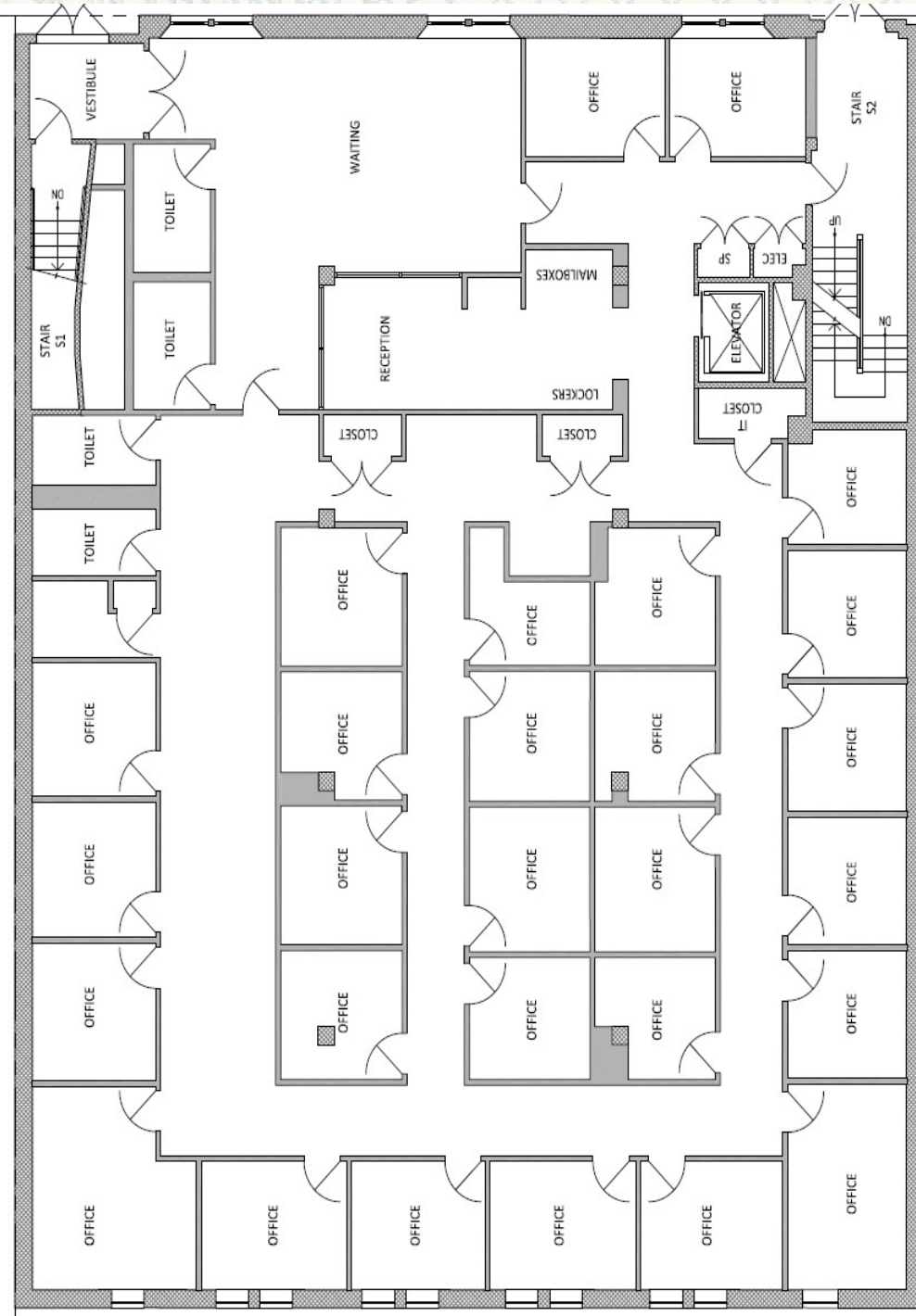
7,491 Lower Level  
8,906 Ground Floor  
3,671 Second Level

# Jamison Commercial RE

New York City

230  
E. 106th Street  
New York City

Ground Floor Plan 8,906 Rentable sq ft and 7,150 Actual sq ft

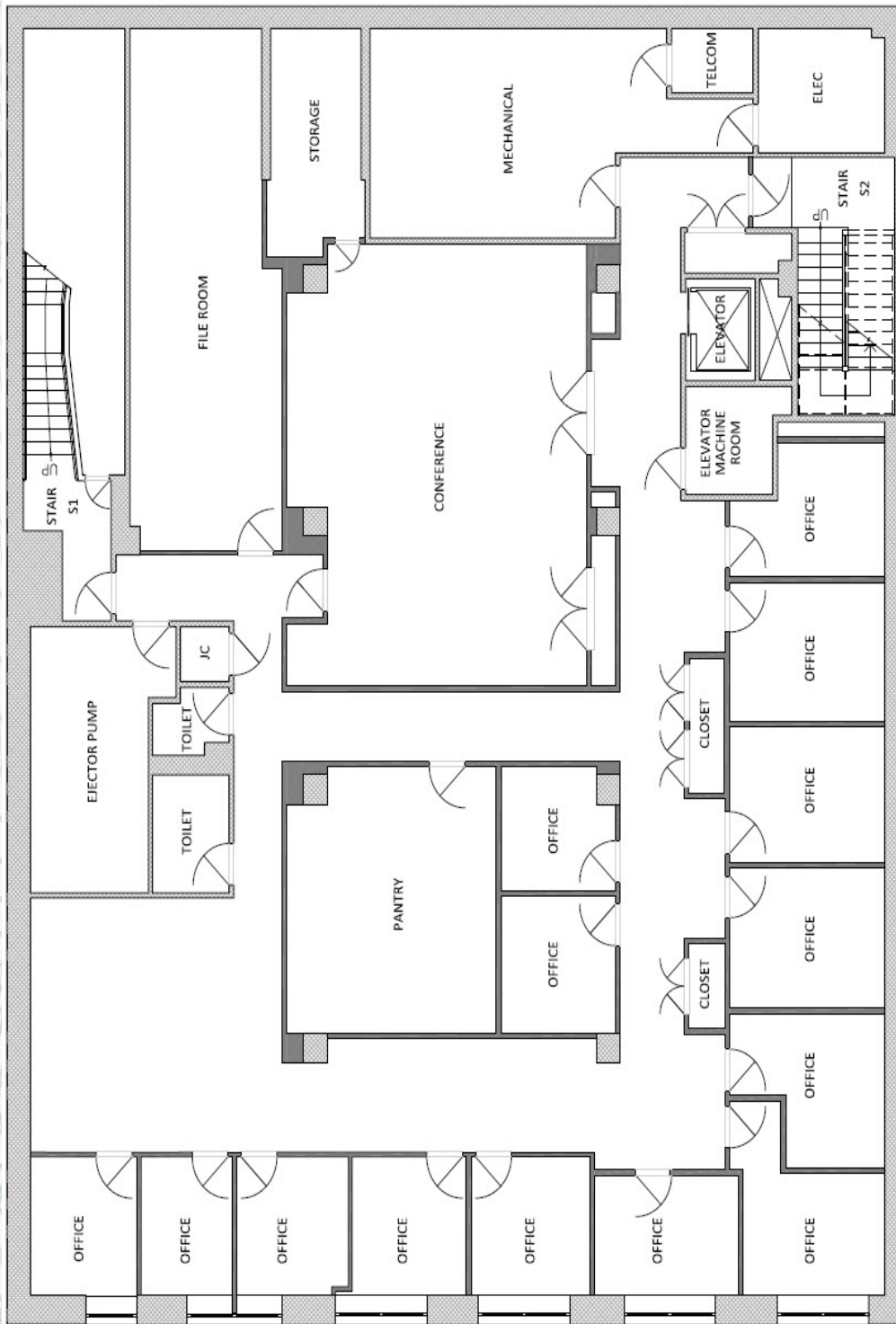


# Jamison Commercial RE

New York City

230  
E. 106th Street  
New York City

Lower Level Floor Plan 7,491 Rentable sq ft and 7,150 Actual sq ft

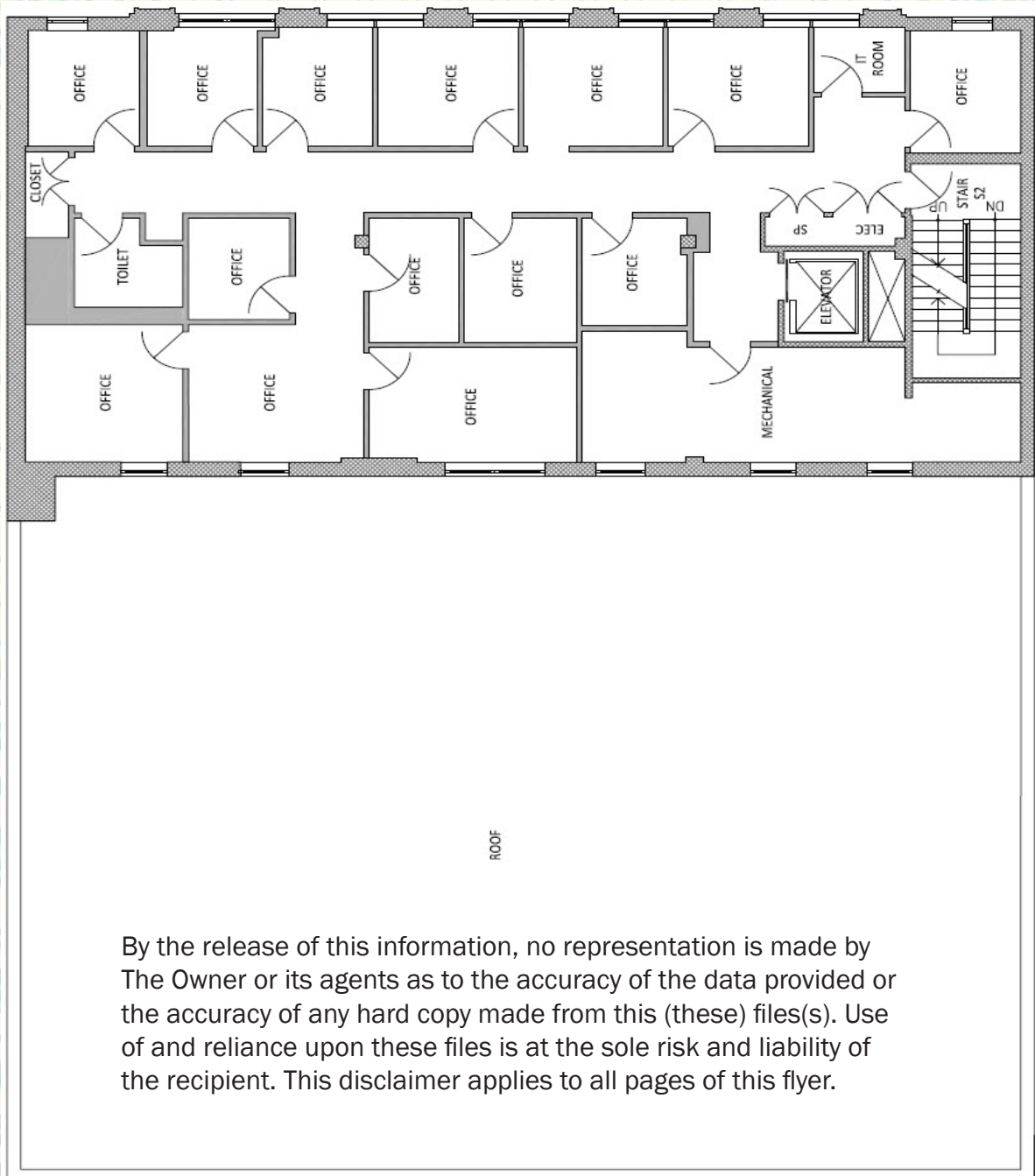


Jamison Weiner

646-245-3254

[jweiner@Jamisoncommercialre.com](mailto:jweiner@Jamisoncommercialre.com)

Second Floor Plan 3,671 Rentable sq ft and 2,932 Actual sq ft



By the release of this information, no representation is made by The Owner or its agents as to the accuracy of the data provided or the accuracy of any hard copy made from this (these) files(s). Use of and reliance upon these files is at the sole risk and liability of the recipient. This disclaimer applies to all pages of this flyer.