

Medical Office | For Lease

CBRE

Pinnacle Professional

129 Vision Park Blvd
The Woodlands, TX 77384
www.cbre.com/properties

Up to 2,702 SF Available



Building owned by **HEALTHCARE REALTY**

PINNACLE PROFESSIONAL BUILDING

129 Vision Park Blvd | The Woodlands, TX 77384

Building owned by **HEALTHCARE REALTY**



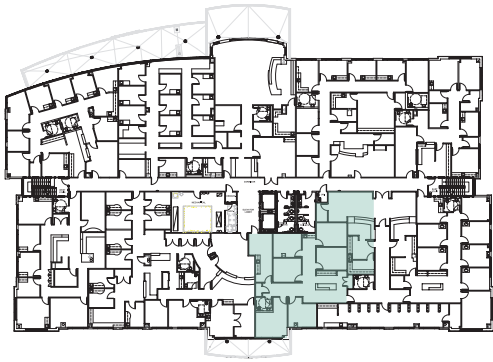
Property Highlights

Pinnacle Professional Building, located at 129 Vision Park Blvd in The Woodlands, is a 76,906 RSF, 3-story, Class A, Medical Office Building.

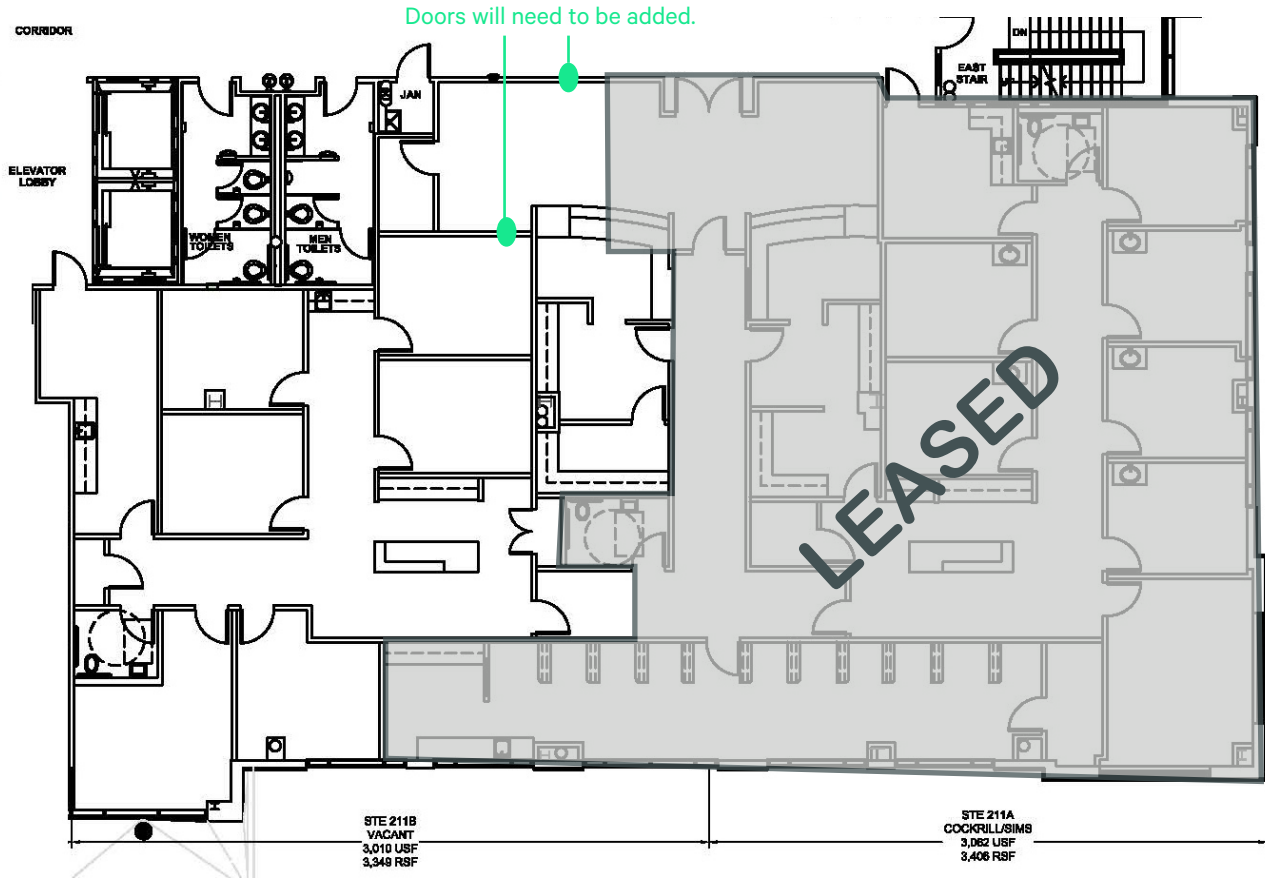
- Easy access to I-45 and close proximity to Memorial Hermann, Houston Methodist, Texas Children's, and CHI/St. Luke's The Woodlands Hospitals
- Abundant free surface parking for visitors
- Great tenant mix and excellent patient demographics
- 2nd generation medical office space available

DEMOGRAPHICS	1 MILE	3 MILES	5 MILES
Population - Estimated 2022	4,933	53,727	155,373
Population - 5-Year Projection	5,359	56,950	162,569
Median Age - Estimated 2022	45.9	43.4	40.0
Average Household Income - Estimated 2022	\$165,373	\$166,098	\$156,724

SUITE 211-B - 2,702 RSF



2nd Floor



PINNACLE PROFESSIONAL BUILDING

129 Vision Park Blvd | The Woodlands, TX 77384

For Lease



Contact Us

Brandy Bellow Spinks

Senior Vice President

+1 713 577 1642

brandy.bellow@cbre.com

Building owned by

HEALTHCARE REALTY

© 2023 CBRE, Inc. All rights reserved. This information has been obtained from sources believed reliable, but has not been verified for accuracy or completeness. You should conduct a careful, independent investigation of the property and verify all information. Any reliance on this information is solely at your own risk. CBRE and the CBRE logo are service marks of CBRE, Inc. All other marks displayed on this document are the property of their respective owners, and the use of such logos does not imply any affiliation with or endorsement of CBRE. Photos herein are the property of their respective owners. Use of these images without the express written consent of the owner is prohibited.

www.cbre.com/properties

CBRE