

BUILDING FOR SALE

2129

2129 BARDIN ROAD WAREHOUSE BUILDING



JONATHAN TOOLEY

806.346.1276

JONATHAN@HAMILTONCOMMERCIAL.COM

SWC OF BARDIN ROAD AND MATTHEW ROAD - GRAND PRAIRIE, TEXAS

2.8 ACRES - LIGHT INDUSTRIAL - WAREHOUSE/DISTRIBUTION BUILDING

Property Summary

Summary

LAND: 2.8 ACRES

ZONING: PD-30

UTILITIES: WATER, SEWER, ELECTRIC, GAS, DATA

CONSTRUCTION: CONCRETE TILT WALL

CLEAR HEIGHT: 24 FT

Overview

- TOTAL BUILDING AREA: 31,414 SQ FT
- PORTION OF BUILDING LEASED: 15,235 SQ FT
- 8 DOCK DOORS AND 2 RAMPS
- LOCATED ADJACENT TO I-20/SH-360/SH-161
- CALL OR EMAIL TO INQUIRE MORE INFORMATION



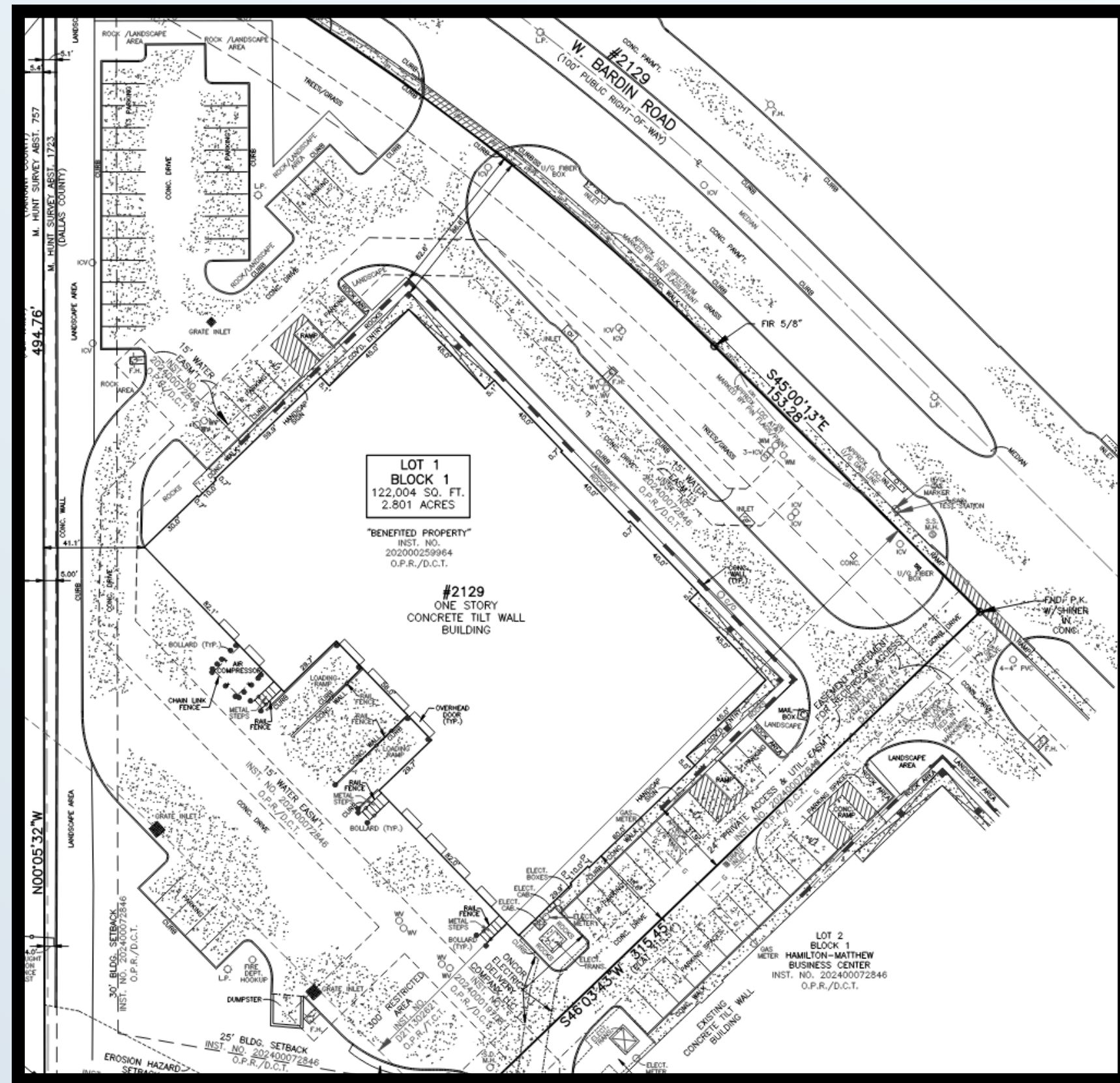
JONATHAN TOOLEY

806.346.1276

JONATHAN@HAMILTONCOMMERCIAL.COM

SWC OF BARDIN ROAD AND MATTHEW ROAD - GRAND PRAIRIE, TEXAS
2.8 ACRES - LIGHT INDUSTRIAL - WAREHOUSE/DISTRIBUTION BUILDING

Survey



JONATHAN TOOLEY
806.346.1276
JONATHAN@HAMILTONCOMMERCIAL.COM

SWC OF BARDIN ROAD AND MATTHEW ROAD - GRAND PRAIRIE, TEXAS
2.8 ACRES - LIGHT INDUSTRIAL - WAREHOUSE/DISTRIBUTION BUILDING



JONATHAN TOOLEY

806.346.1276

JONATHAN@HAMILTONCOMMERCIAL.COM

SWC OF BARDIN ROAD AND MATTHEW ROAD - GRAND PRAIRIE, TEXAS
2.8 ACRES - LIGHT INDUSTRIAL - WAREHOUSE/DISTRIBUTION BUILDING

Demographics

	1 MILE	3 MILE	5 MILE
TOTAL POPULATION - 2024	13,534	109,226	266,636
DAYTIME POPULATION	9,531	81,923	210,956
AVERAGE HOUSHOLD INCOME	\$108,674	\$106,226	\$94,521

TRAFFIC COUNTS: 11,352 VPD



JONATHAN TOOLEY

806.346.1276

JONATHAN@HAMILTONCOMMERCIAL.COM

SWC OF BARDIN ROAD AND MATTHEW ROAD - GRAND PRAIRIE, TEXAS
2.8 ACRES - LIGHT INDUSTRIAL - WAREHOUSE/DISTRIBUTION BUILDING



HAMILTON
COMMERCIAL

FOR MORE INFORMATION:

THE INFORMATION CONTAINED IN THIS DOCUMENT WAS SUPPLIED BY SOURCES DEEMED RELIABLE BUT THERE ARE NO GUARENTEES OR WARRANTIES DUE TO ANY INACCURACIES. THIS DOCUMENT MAYBE SUBJECT TO ERRORS, OMISSIONS, PRICES CHANGES, OR TAKEN OFF THE MARKET.

JONATHAN TOOLEY

DIRECTOR - LAND DEVELOPMENT

806.346.1276

JONATHAN@HAMILTONCOMMERCIAL.COM