



BANTR STEVENS POINT

209 Division St, Stevens Point, WI 54481

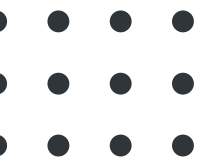


WWW.LOKRECOMPANIES.COM



2025

JUST MINUTES FROM I-39 AND UW-STEVENSONS POINT CAMPUS



bantr Stevens Point features 81 apartment units and 3,500 square feet of main-floor commercial space—ideal for retail or office use.

This prime location is just minutes from I-39, a four-minute walk from UW-Stevens Point, and conveniently situated next to Starbucks, Noodles & Company, District 1 Brewing Co., Anytime Fitness, and Firehouse Subs.



209 Division St, Stevens Point, WI 54481

WWW.LOKRECOMPANIES.COM

3,500 SF AVAILABLE ON FIRST FLOOR OF 81 UNIT RESIDENTIAL COMPLEX

— AVAILABILITY

3,500 square feet

— NNN EXPENSES

\$3.95/SF



DEMOGRAPHICS

22 MILE RADIUS POPULATION



DAILY CARS

10,000+



22 MILE RADIUS
POPULATION

127,600



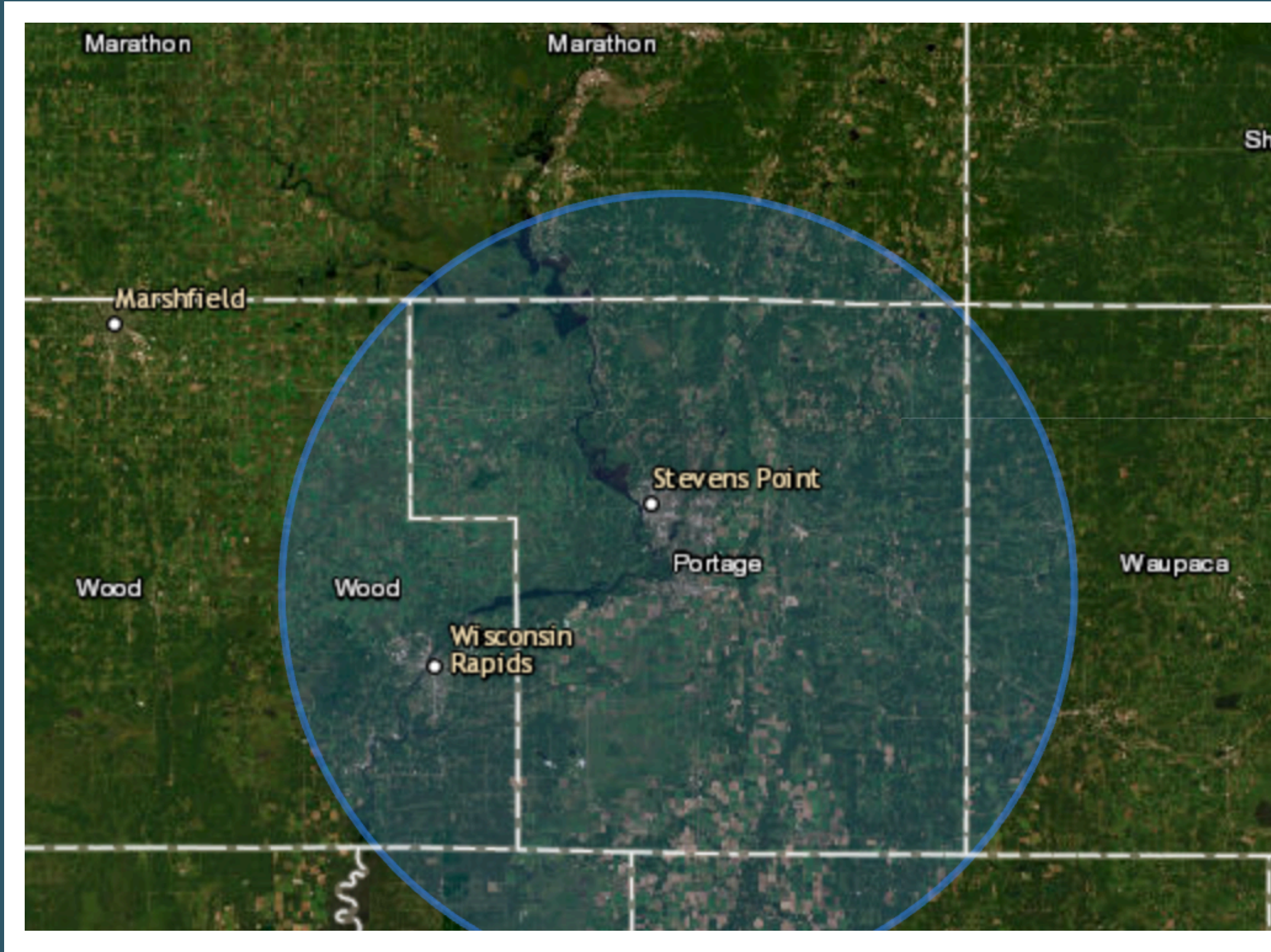
PORTAGE COUNTY
HOUSEHOLDS

29,636



METRO AREA AVG.
HOUSEHOLD INCOME

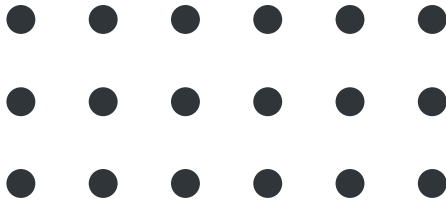
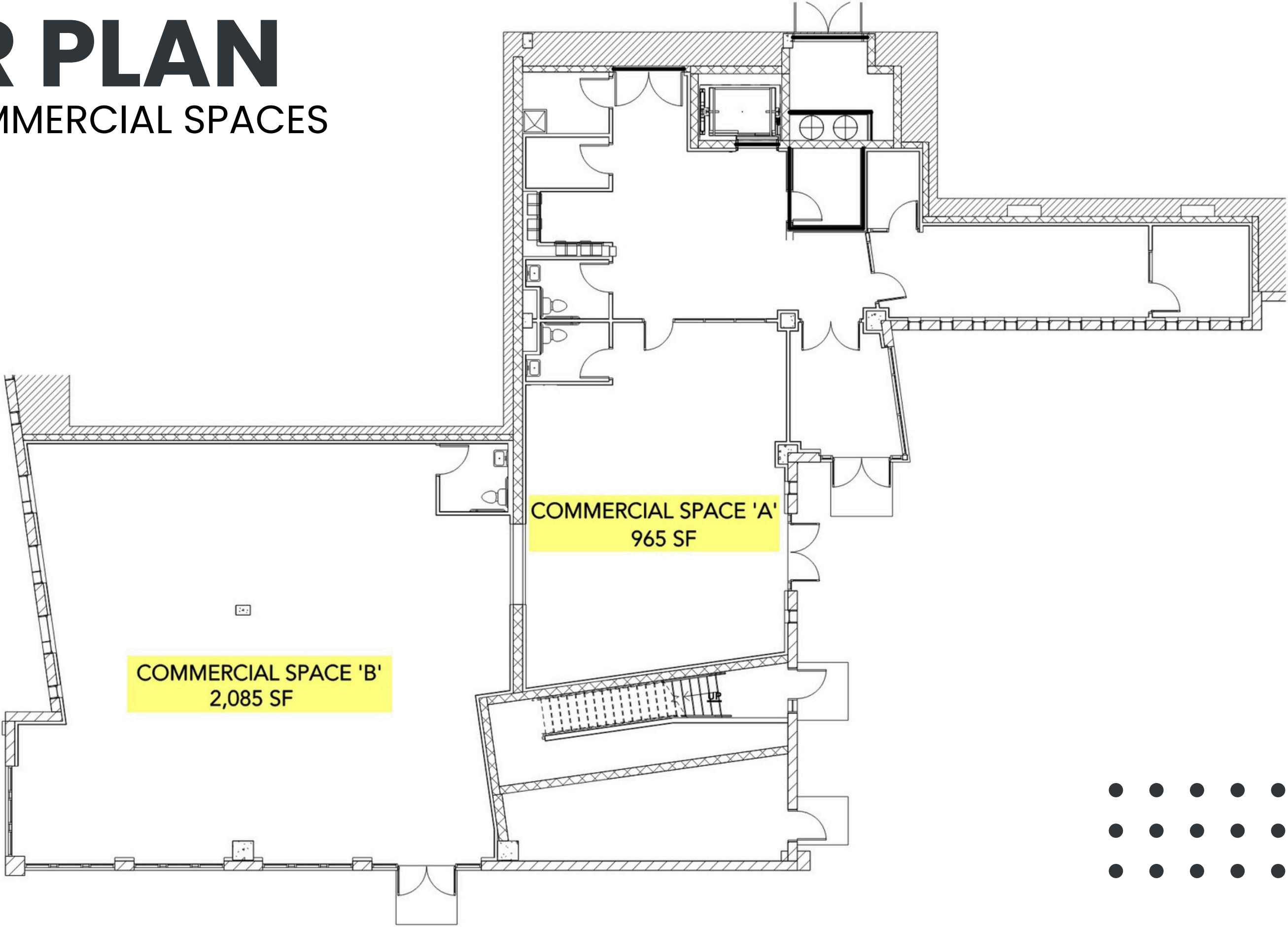
\$73,300



FLOOR PLAN

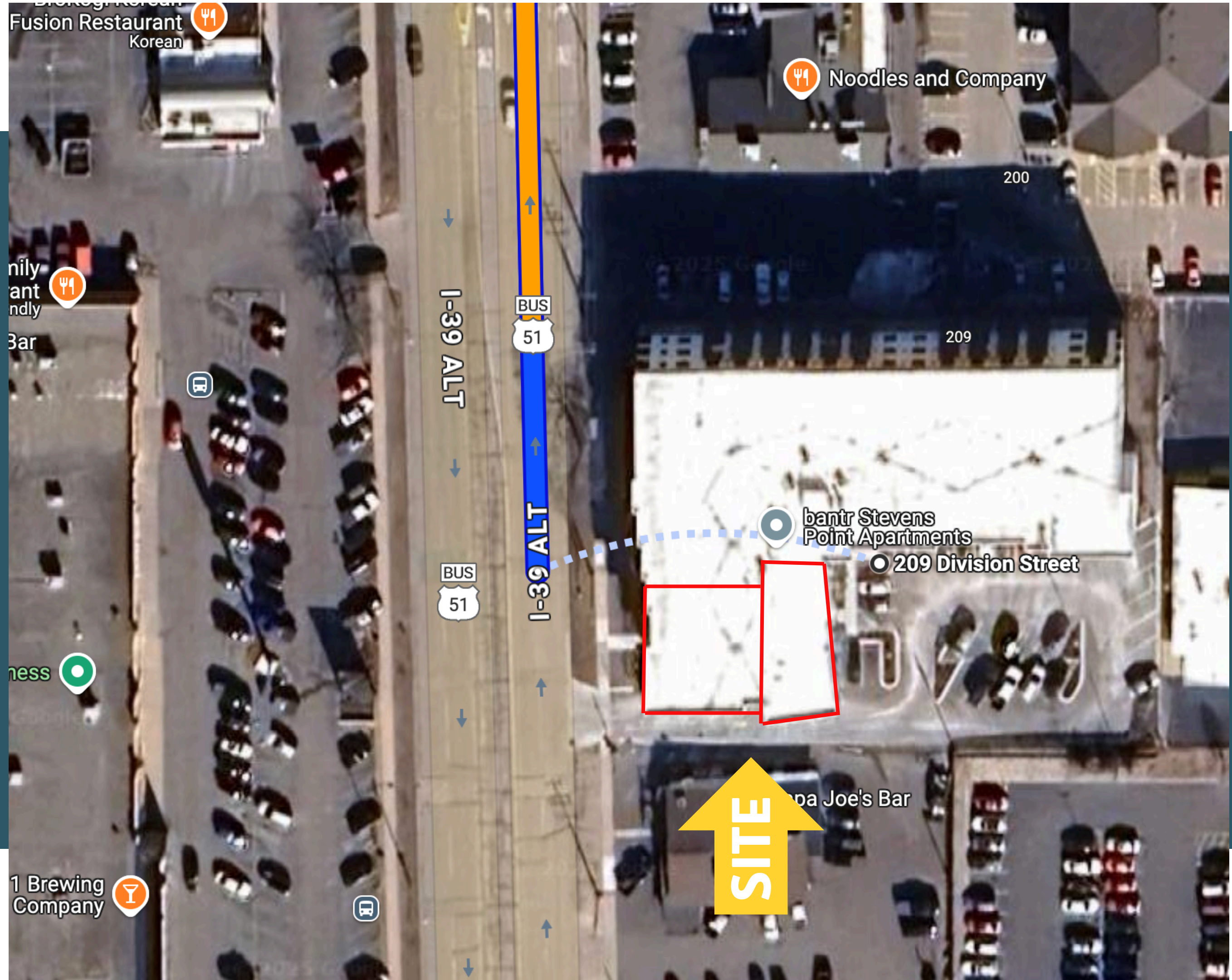
AVAILABLE COMMERCIAL SPACES

DIVISION ST.



SITE MAP

1800 PLOVER ROAD, PLOVER, WI 54467





**THANK
YOU**

CONTACT US

VICTOR ANDERSON

📞 1.715.574.1677

🌐 www.lokrecompanies.com

📍 Wausau, WI.