

THE MATHER

7929 & 7931 WESTPARK DRIVE, TYSONS, VA 22102



Up to 14,261 SF
Retail Available Now
293 Residential Units
Over 90% pre-sold

ALEX MEYER
202.420.7770
ameyer@klnb.com

KELLY ATKINSON
202.420.7762
katkinson@klnb.com

JENNIFER PRICE
202.420.7768
jprice@klnb.com

KIM STEIN
202.652.2338
kstein@klnb.com



THE MARKET

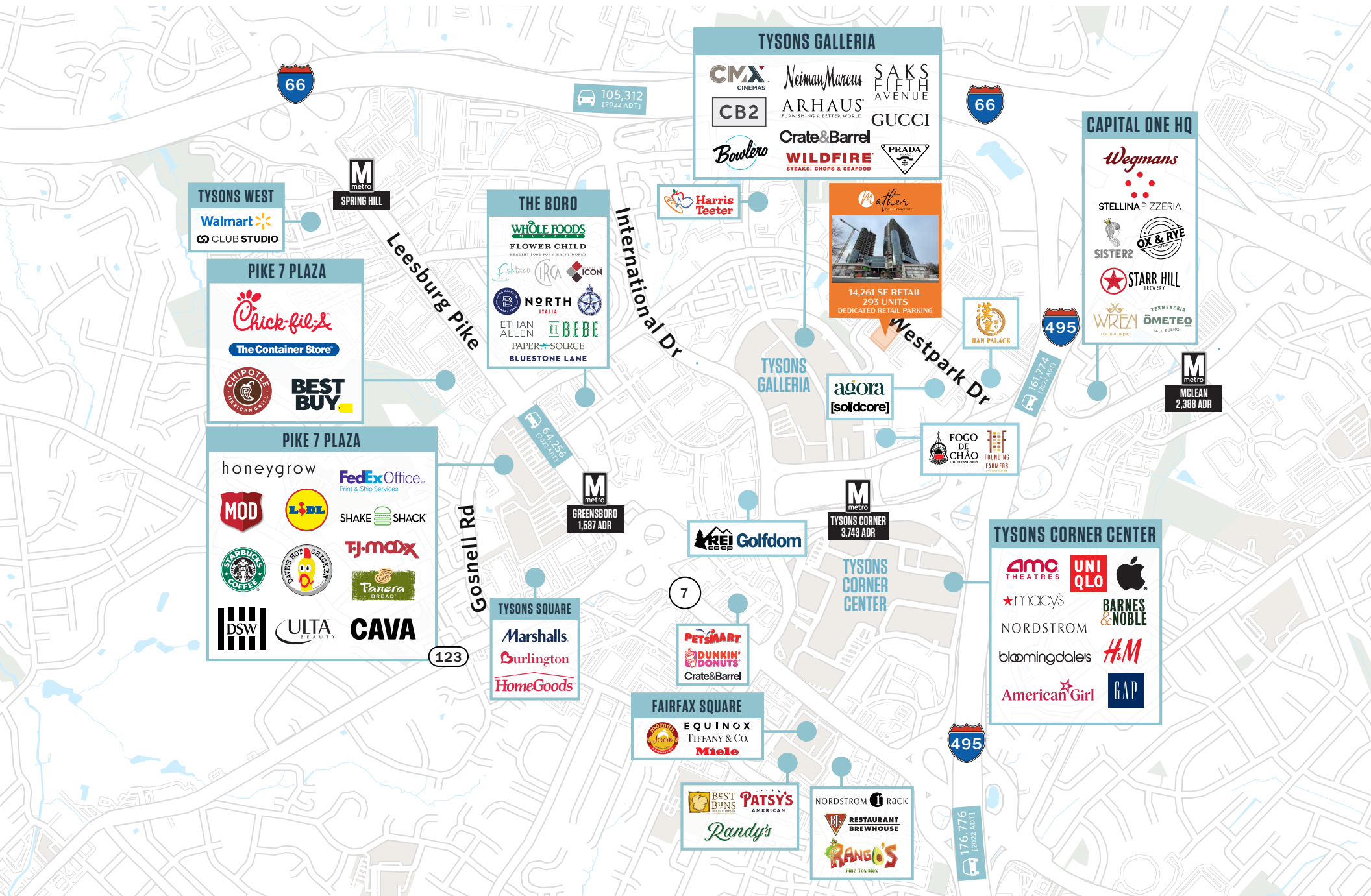


Mather
be nextaordinary

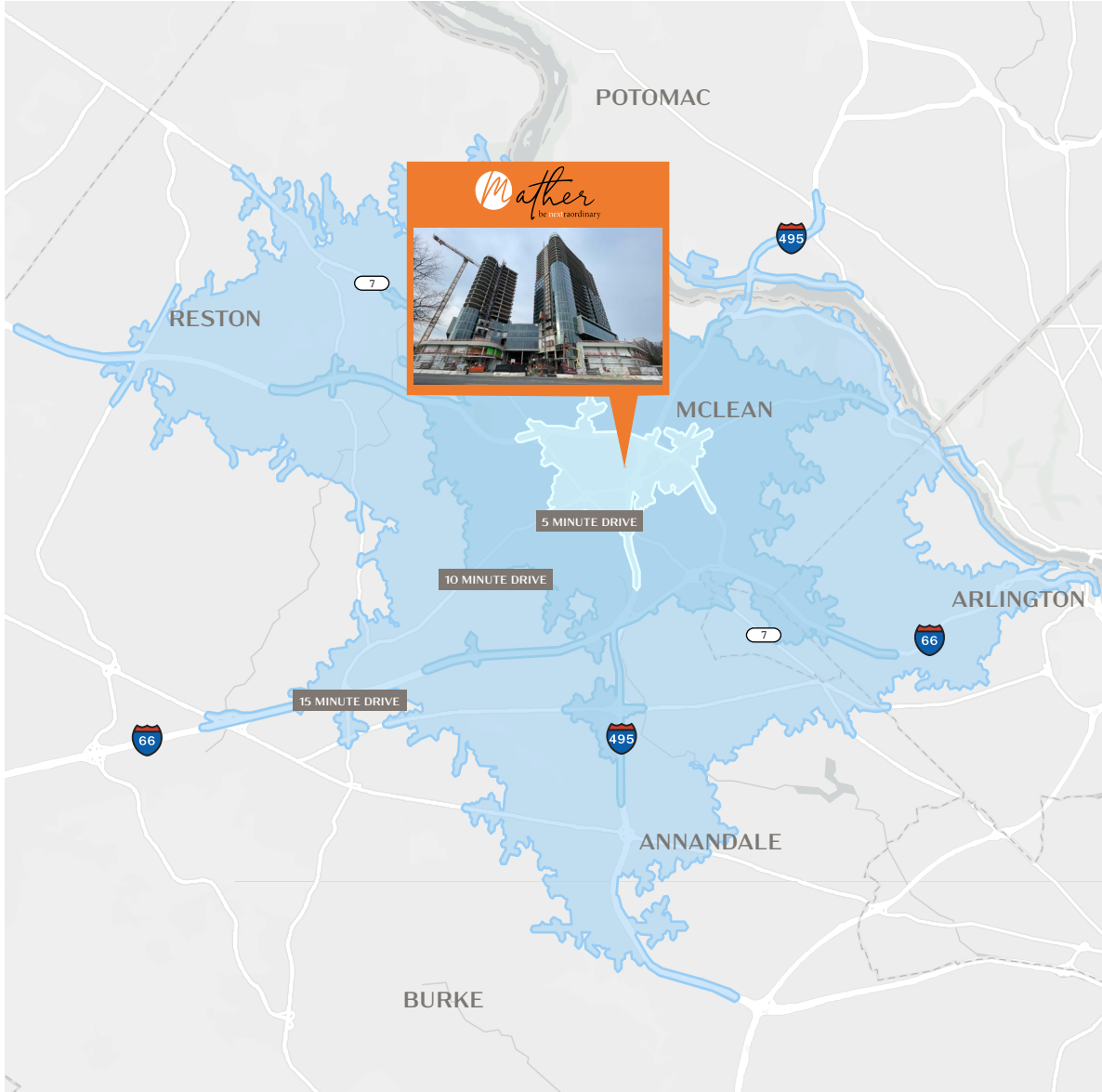


14,261 Sf Retail
293 Units
Dedicated Retail Parking

THE SUBMARKET



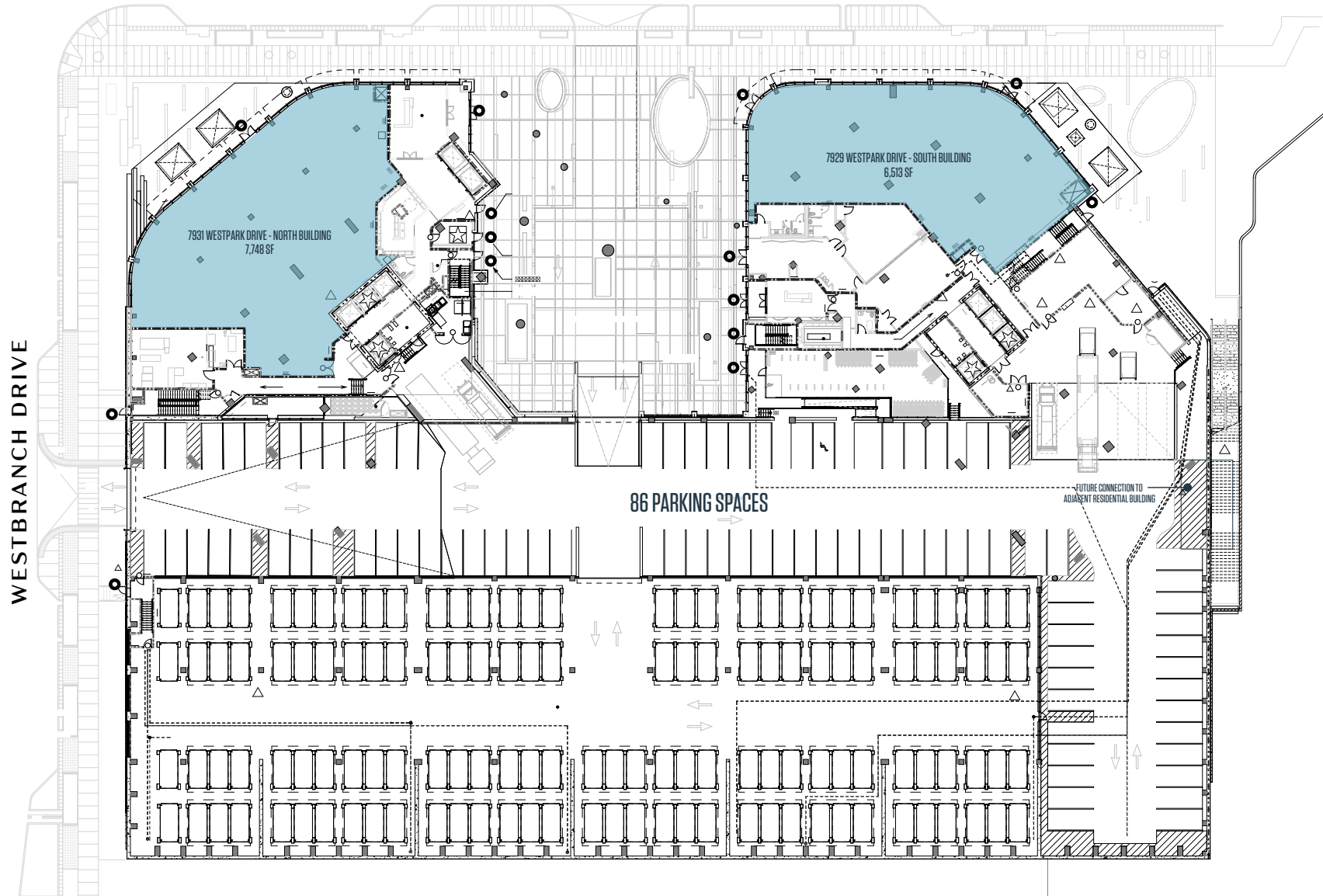
TRADE AREA / DEMOGRAPHICS



	5 MINUTE DRIVE	10 MINUTE DRIVE	15 MINUTE DRIVE
POPULATION	21,120	109,355	423,312
DAYTIME POPULATION	69,891	169,738	526,257
AVERAGE HOUSEHOLD INCOME	\$176,717	\$230,026	\$210,108
HIGHER EDUCATION	35%	33%	33%
HOUSEHOLDS	10,920	43,198	164,495
SPENDING ON FOOD	\$193,630,446	\$1,012,917,073	\$3,393,510,825
SPENDING ON HEALTH & WELLNESS	\$18,883,717	\$100,771,305	\$334,058,895

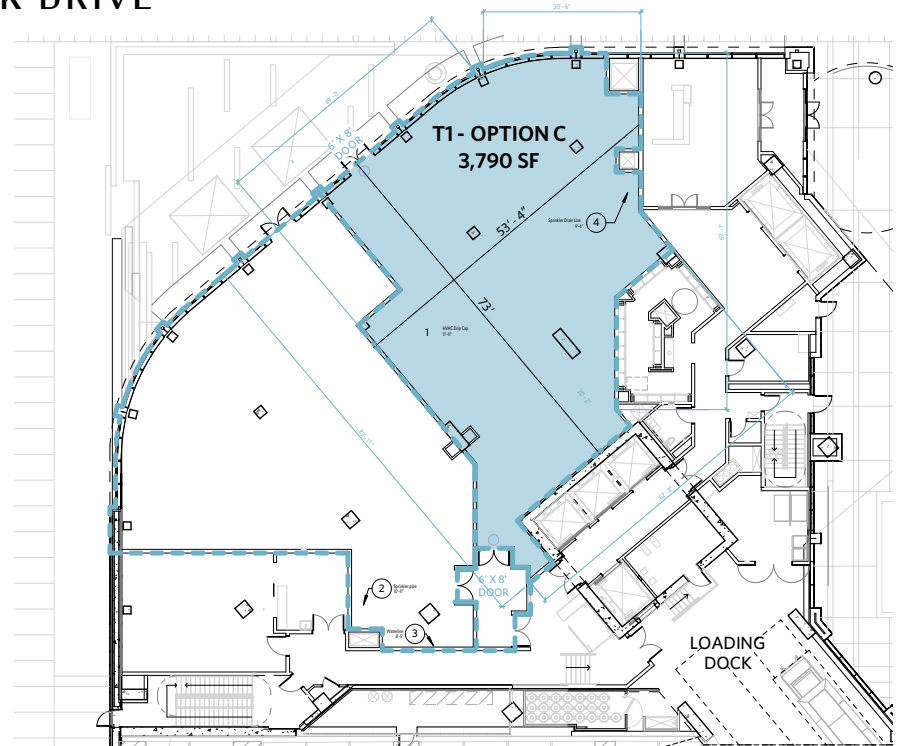
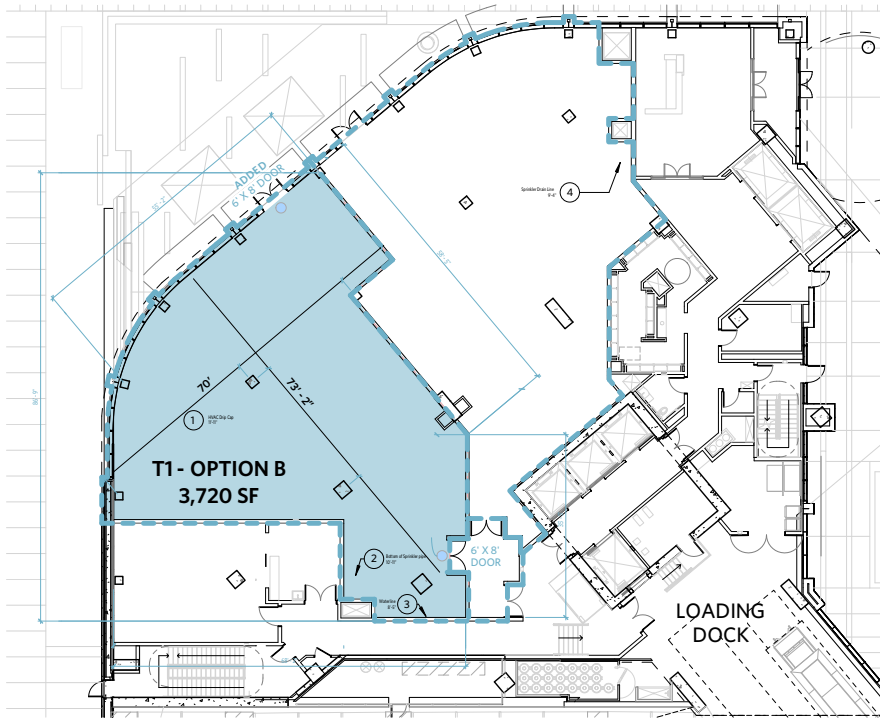
SITE PLAN

WEST PARK DRIVE (5,713 ADT)



DEMISING PLAN

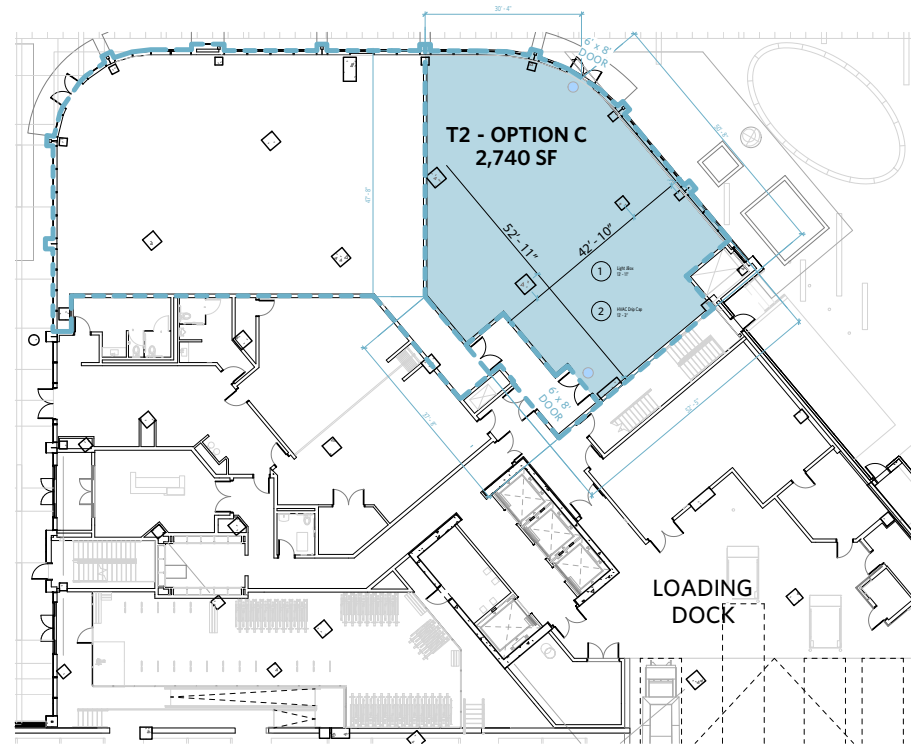
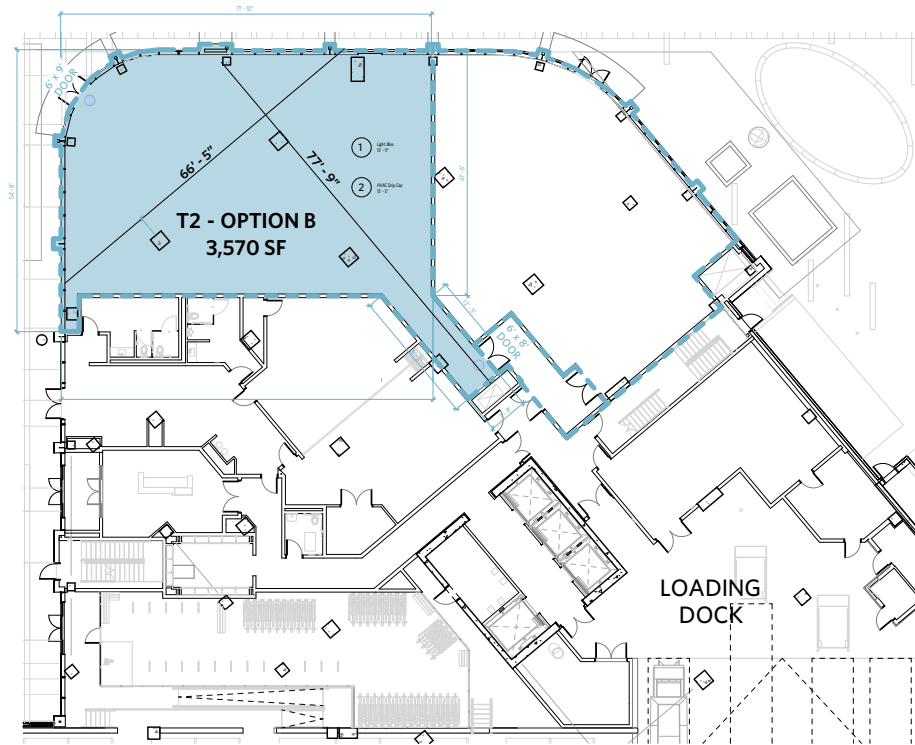
WEST PARK DRIVE



NORTH BUILDING

DEMISING PLAN

WEST PARK DRIVE



SOUTH BUILDING

THE MATHER

7929 & 7931 WESTPARK DRIVE, TYSONS, VA 22102

FOR INQUIRES CONTACT

ALEX MEYER | 202.420.7770 | ameyer@klnb.com

KELLY ATKINSON | 202.420.7762 | katkinson@klnb.com

JENNIFER PRICE | 202.420.7768 | jprice@klnb.com

KIM STEIN | 202.652.2338 | kstein@klnb.com

