

**FOR LEASE:**

**1600 N Park Drive**  
Weston, FL 33326



# WESTON LOGISTICS CENTER

CLASS A INDUSTRIAL WAREHOUSE  
±104,392 SF located in Weston, FL

---

**Lincoln**

**CBRE**

# Building Overview

1600 N Park Drive | 2

1600 N Park Drive is 104,392-SF, industrial warehouse and distribution building on a 12.9-acre property—strategically situated within the renowned and professionally landscaped Weston Park of Commerce—which is located in one of South Florida’s premier communities, Weston, Florida.

## For Lease



**Premises**  
±104,392 SF



**Possession**  
Q2 2026



**Office Area**  
1st Floor: 7,662 SF  
2nd Floor: 12,645 SF



**Clear Height**  
25'



**Dock High Doors**  
18



**Drive-In Doors**  
2



**Power**  
Heavy 3-Phase  
480v/1,600 Amps

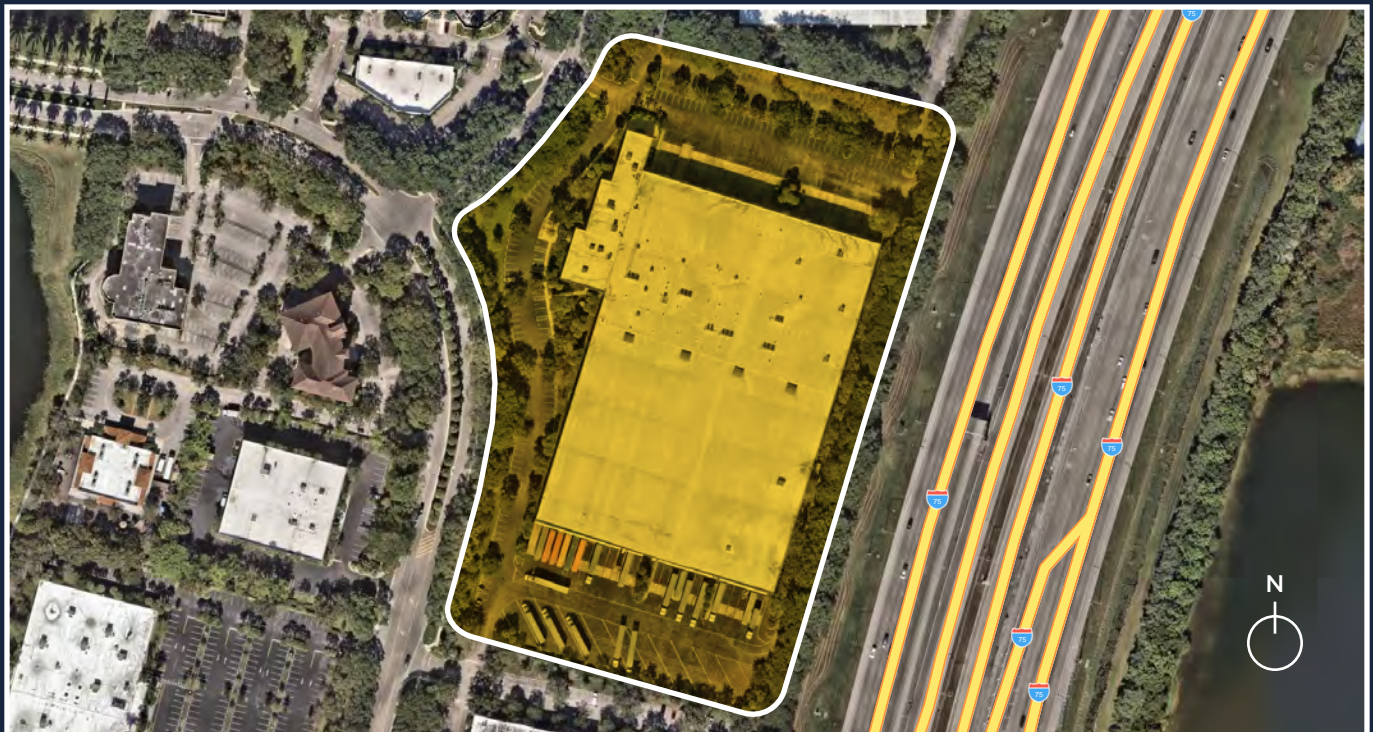


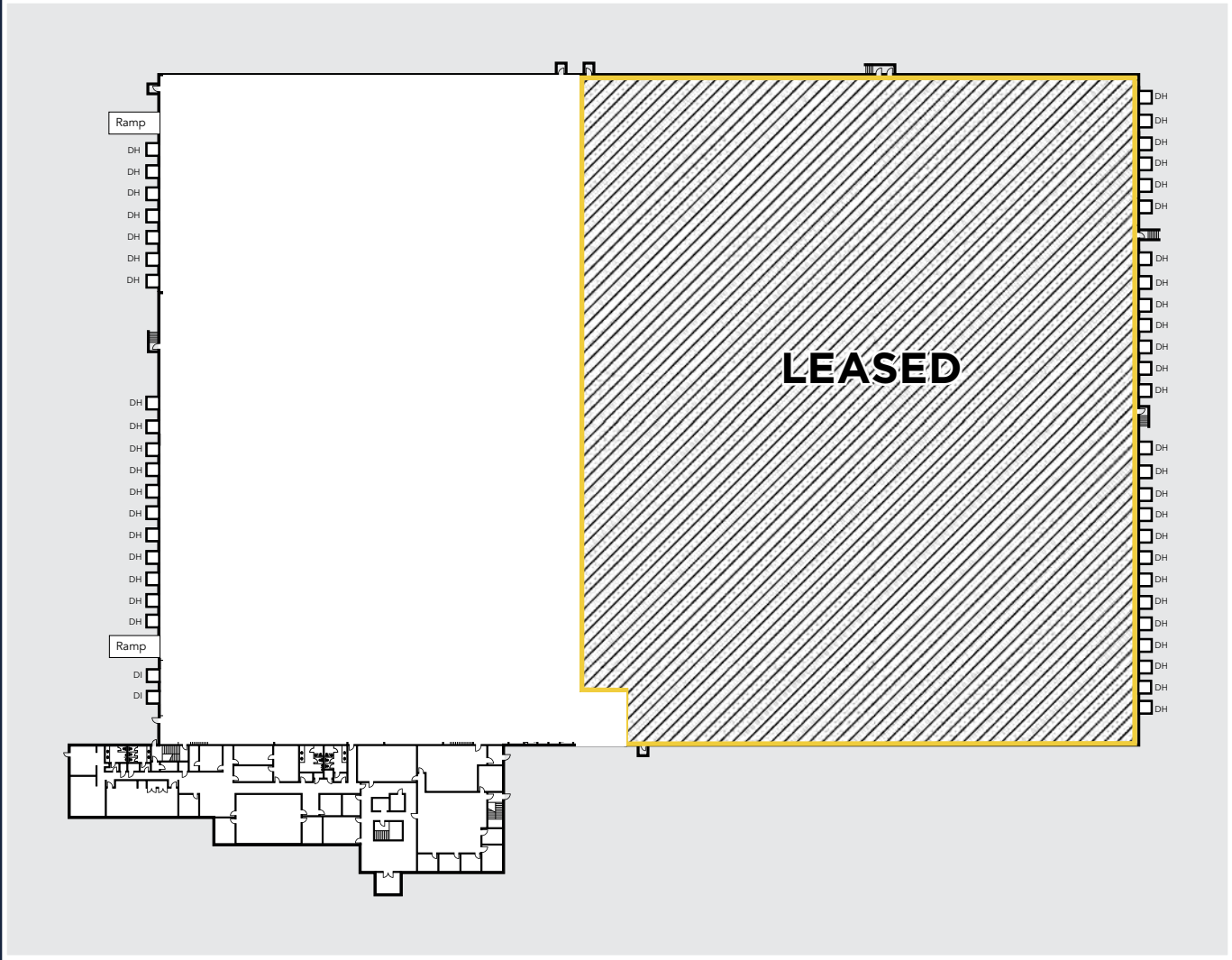
**Parking**  
1.2/1,000 SF



**Sprinklers**  
ESFR

## Site Plan





Featuring the best transportation dynamics in the entire South Florida MSA, 1600 N Park Drive is located only four miles from the region's most significant highway interchange. The confluence of I-75/I-595 and the Sawgrass Expressway (SR-869) allows for distribution to 80% of the region's 6.1 million people within a 60-minute drive time. Additionally, this location is only two miles from the westbound I-75 interchange; therefore allowing excellent access to the Southwest Florida region.

## Key Distances

Weston Road: 0.3 miles | 1 minute

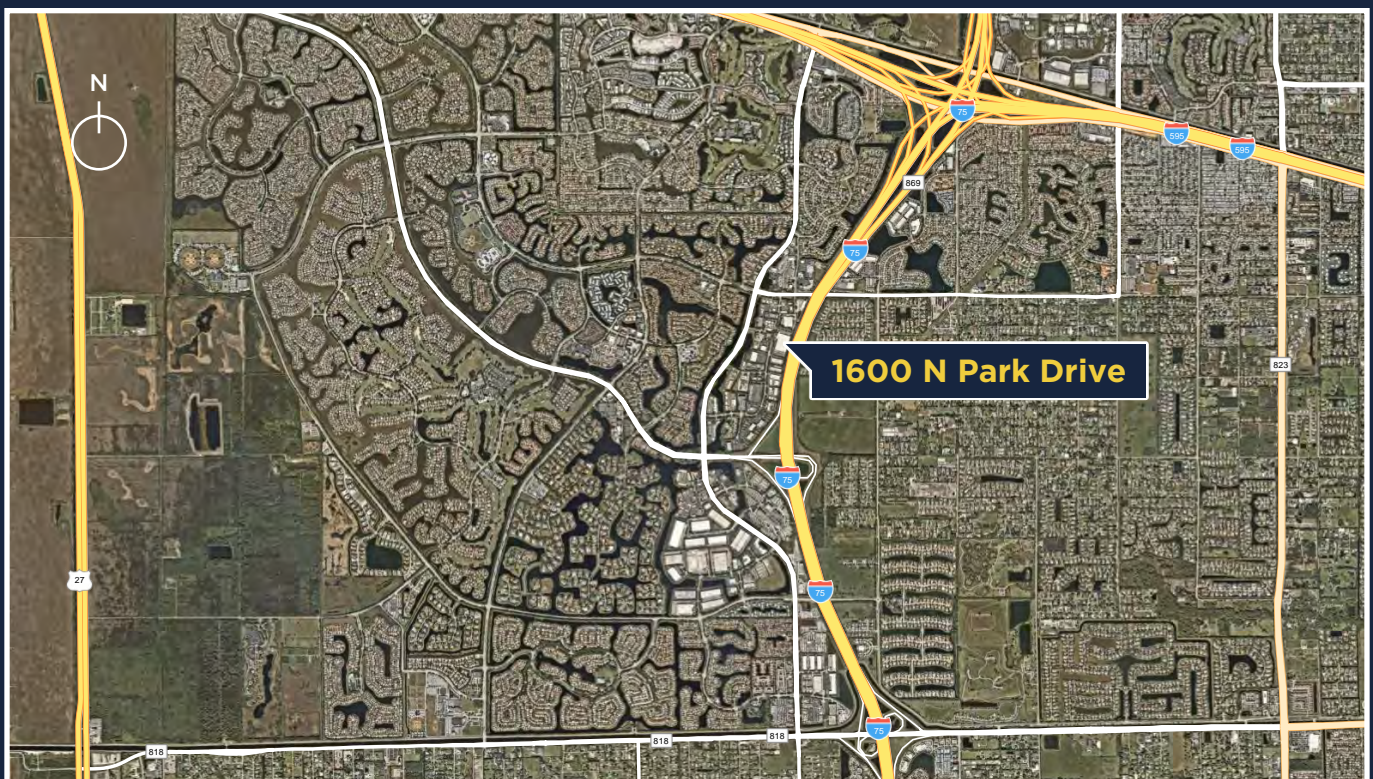
I-75/Royal Palm Boulevard Interchange (Exit 15): 1.4 miles | 4 minutes

I-75/I-595/SR-869 (Sawgrass Expressway) Interchange: 2.1 miles | 5 minutes

Florida's Turnpike: 11.4 miles | 14 minutes

Port Everglades: 18.3 miles | 22-26 minutes

Fort Lauderdale-Hollywood International Airport (FLL): 19.3 miles | 22-35 minutes



# FOR LEASE:

1600 N Park Drive  
Weston, FL 33326



For more information, please contact:

**Larry Dinner**

Senior Vice President

+1 954 331 1705

[larry.dinner@cbre.com](mailto:larry.dinner@cbre.com)

**Thomas O'Loughlin**

Vice Chairman

+1 954 817 3919

[tom.oloughlin@cbre.com](mailto:tom.oloughlin@cbre.com)

**Lincoln**

**CBRE**

© 2025 CBRE, Inc. All rights reserved. This information has been obtained from sources believed reliable but has not been verified for accuracy or completeness. CBRE, Inc. makes no guarantee, representation or warranty and accepts no responsibility or liability as to the accuracy, completeness, or reliability of the information contained herein. You should conduct a careful, independent investigation of the property and verify all information. Any reliance on this information is solely at your own risk. CBRE and the CBRE logo are service marks of CBRE, Inc. All other marks displayed on this document are the property of their respective owners, and the use of such marks does not imply any affiliation with or endorsement of CBRE. Photos herein are the property of their respective owners. Use of these images without the express written consent of the owner is prohibited.