

Picturesque Office for Lease

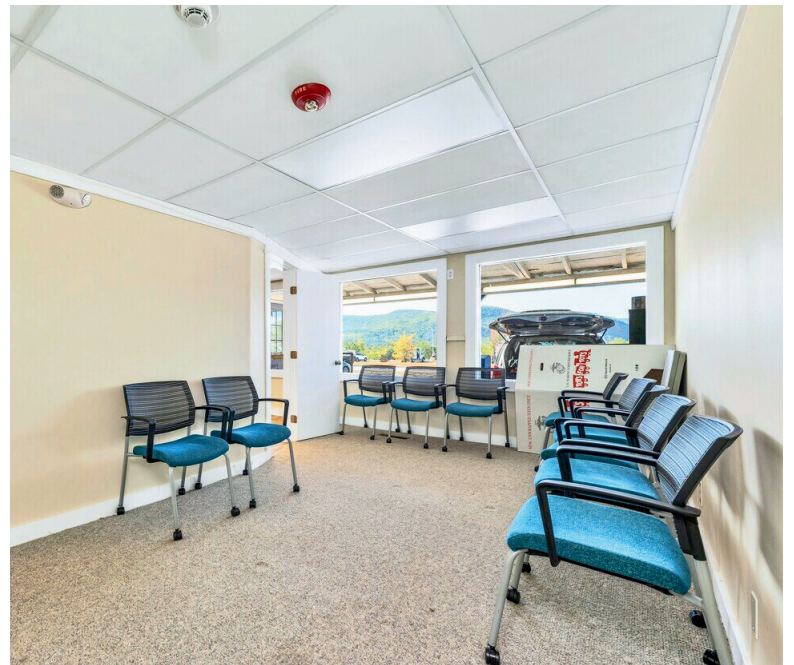
3631 White Mountain Hwy, North Conway, NH 03845



1,000 Sq/ft

About:

Prime sublease opportunity on White Mountain Highway in North Conway. Suite 4 offers excellent visibility, ample parking, and a flexible layout ideal for retail or office use. About two years remain on the current lease, making this a great chance to establish your business in a high-traffic location.



Contact Details:

👤 **Scott Franklin**

📞 603-717-5546

✉️ Scott.Franklin@SVN.com

Grace Moore 👤

304-400-9499 📞

Grace.Moore@SVN.com ✉️

Picturesque Office for Lease

3631 White Mountain Hwy, North Conway, NH 03845



North Conway, NH:

North Conway, NH, is a mountain resort village in the White Mountains known for outdoor recreation like hiking, skiing, and scenic drives, as well as shopping at outlet malls and historic main street shops. A popular year-round destination.

Property Details:



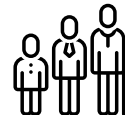
Population

1 mile: 852
3 miles: 3,786
5 miles: 6,036



Median HH Income

1 mile: \$96,786
3 miles: \$90,002
5 miles: \$93,175



Median Age

1 mile: 51 years
3 miles: 50 years
5 miles: 51 years

Property Highlights:

- Centrally Located
- Newly Renovated
- Office/Retail
- Stunning Office Views



Scott Franklin

603-717-5546
Scott.Franklin@SVN.com



Grace Moore

304-400-9499
Grace.Moore@SVN.com