

18-60 FLUSHING AVENUE  
18-60 FLUSHING AVENUE  
18-60 FLUSHING AVENUE  
**18-60 FLUSHING AVENUE**  
FLUSHING, NY 11385  
18-60 FLUSHING AVENUE  
18-60 FLUSHING AVENUE  
18-60 FLUSHING AVENUE



**COREY COHEN | CCOHEN@ROEBLINGGROUP.COM | 646.906.9054 | ROEBLINGGROUP.COM**





18-60 Flushing Avenue  
Flushing, NY 11385

This stunning 27-foot-wide, semi-detached brick two-family home sits proudly on the Ridgewood/Bushwick border, offering the perfect blend of modern comfort and investment potential. Flooded with natural light and featuring dual HVAC systems, this fully renovated property delivers both style and functionality.





**Owners' Duplex (5BR, 2BA) - Designed for Living**

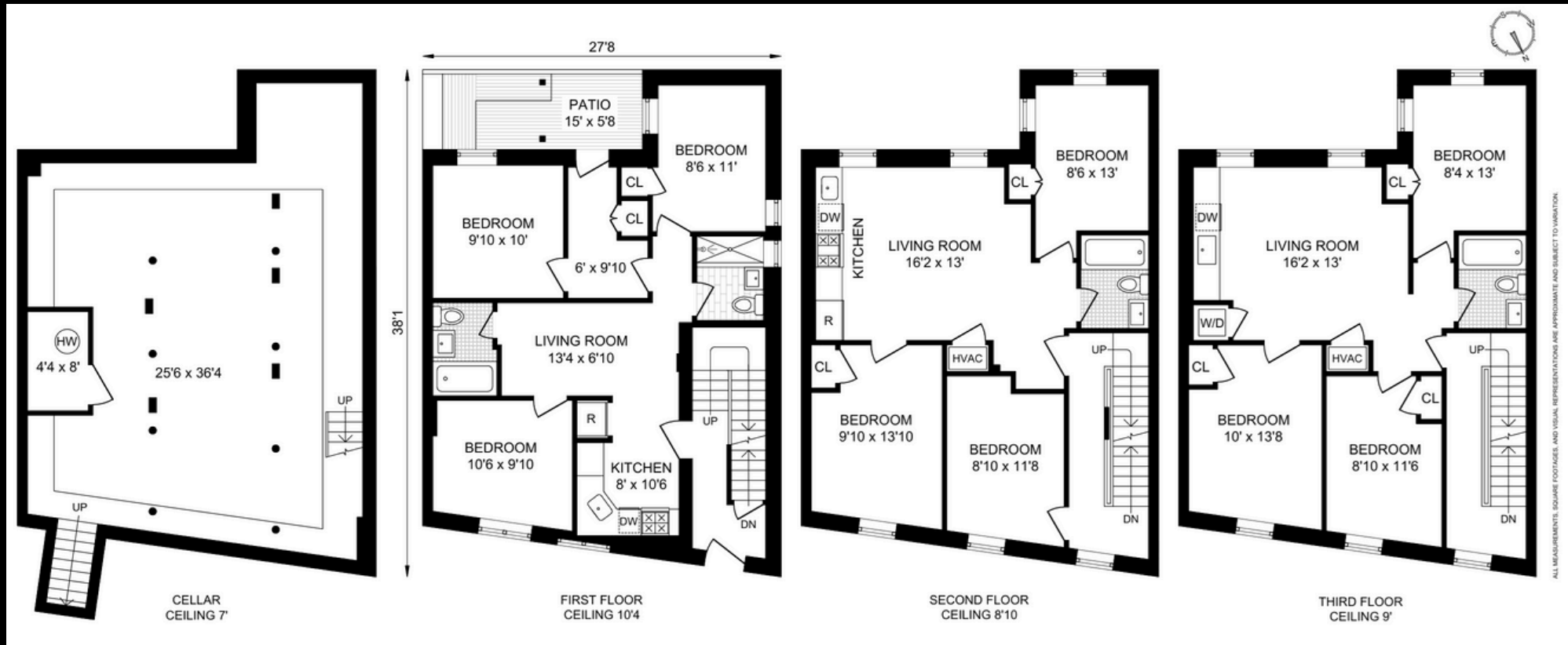
- Step into a gracious foyer that neatly separates your entryway from living spaces
- The chef-worthy eat-in kitchen boasts custom cabinetry and plentiful storage
- Two versatile bedrooms (or home office/playroom options) share the second floor with a full bath
- Retreat upstairs to find three additional bedrooms, a spacious living area, another full bath, and convenient in-unit laundry











This is for illustrative purposes only. Measurements are approximate. While The Roebbling Group believes that the information in this floorplan is accurate, interested parties should carry out their own inquiries.



# The Neighborhood

Welcome to Ridgewood, a vibrant neighborhood where historic charm meets modern creativity on the border of Brooklyn and Queens. Discover a community rich in character, with tree-lined streets, classic row houses, and a dynamic arts and café scene. From its deep-rooted history to its thriving local culture, Ridgewood offers a unique blend of old New York soul and contemporary energy—perfect for those seeking an authentic yet evolving urban lifestyle.



Grover Cleveland Playground



Gunther's



Mano's Pizzeria



Aunt Ginny's



Topos Bookstore Cafe



Baker's  
Dozen Bagels



# 18-60 Flushing Avenue

Flushing, NY 11385

## Unit Layout:

Rooms: 15

Bedrooms: 7

Bathrooms: 4

## Features:

- Hardwood floors

- Skyline views

- Washer/Dryer

## Overview:

Price: \$1,700,000

Square Footage: 3,237

For viewings and inquiries, please contact:



**Corey Cohen**

[ccohen@roebblingroup.com](mailto:ccohen@roebblingroup.com) | 646.906.7375

The Roebling Group is a licensed real estate brokerage. All information herein is intended for information purposes only and has been compiled from sources deemed reliable, but The Roebling Group makes no warranty or representation as to the accuracy thereof. All dimensions provided are approximate. To obtain exact dimensions, The Roebling Group advises you to hire a qualified architect or engineer.

