

AVAILABLE**2000 – 2026 N RIVERSIDE DR, RIALTO, CA 92377**

LOCATION OVERVIEW

Rancho Verde Plaza is a 116,014 SF neighborhood center anchored by Rite Aid, Planet Fitness, Starbucks, Auto Zone, Carl's Jr, Del Taco, and other national and regional tenants.

The shopping center is strategically located on the northwest quadrant of Interstate 210 and Riverside Drive in the city of Rialto in San Bernardino County. With the many national and regional tenants in the center, Rancho Verde Plaza is a great center for retailers.

We would be excited to have an ice cream shop, yogurt shop, donut shop, optometrist, party supply store, beauty supply store, a sporting goods store or any other retail use that complements our existing tenant mix. Please call us to discuss your needs.

HIGHLIGHTS

- Suites available ±1200 SF to ±17,880 SF
- Shopping center has excellent visibility from I-210
- Easy access to freeway
- Ample parking
- Over 119,057 people within a 5 mile radius
- Average daily traffic over 30,000 CPD @ Riverside and I-210



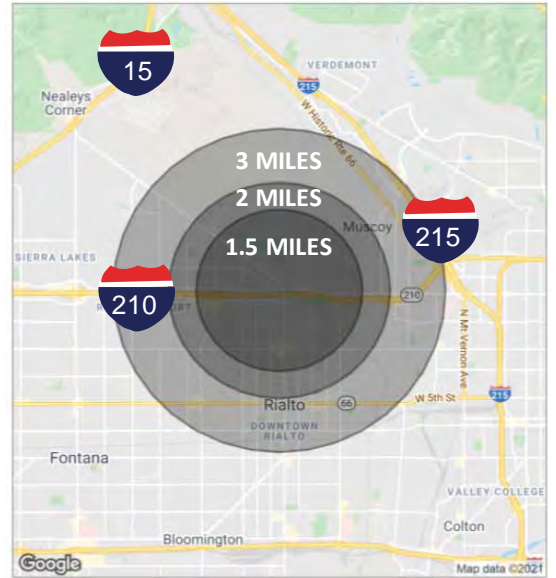
BARBARA ARMENDARIZ
President & Founder
CaDRE #01472088
+1 213.266.3333 Ext 404
barbara@sharplinecre.com



DEMOGRAPHICS

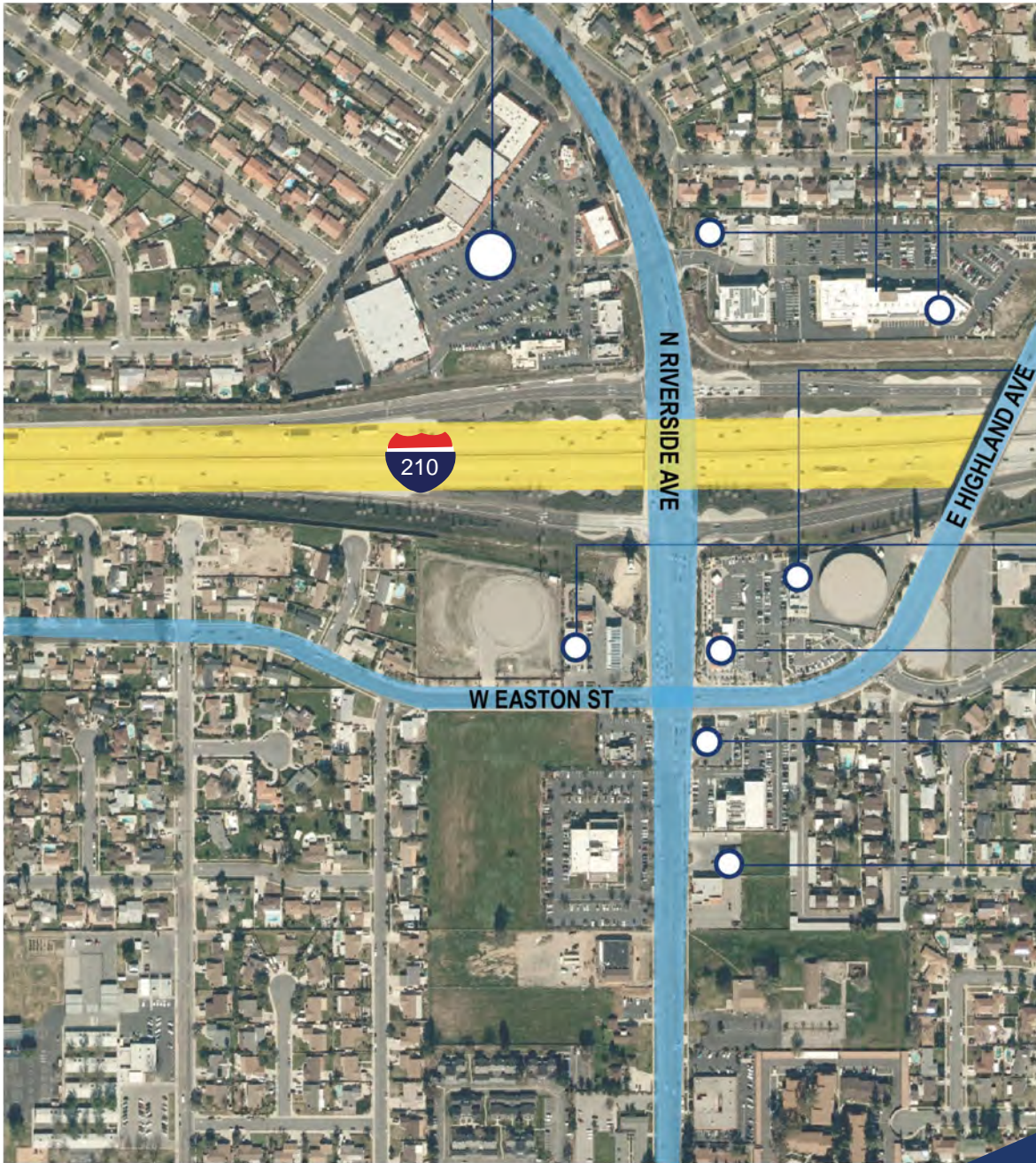
📍 2000–2026 N RIVERSIDE DR, RIALTO, CA 92377

	1.5 MILES	2 MILES	3 MILES
Total Population	26,777	47,683	108,667
Population Density	3,788	3,794	3,843
Median Age	28.2	27.8	27.4
Median Age (Male)	26.8	27.1	26.3
Median Age (Female)	29.8	28.8	28.5
Total Households	6,661	11,540	26,451
# of Persons Per HH	4.0	4.1	4.1
Average HH Income	\$61,060	\$62,415	\$58,987
Average House Value	\$293,708	\$283,826	\$268,651



RETAILER MAP

2000–2026 N RIVERSIDE DR, RIALTO, CA 92377



Davita
Kidney Care

Corky's
Kitchen & Bakery



CHIPOTLE
MEXICAN GRILL

ARCO

IN-N-OUT
BURGER





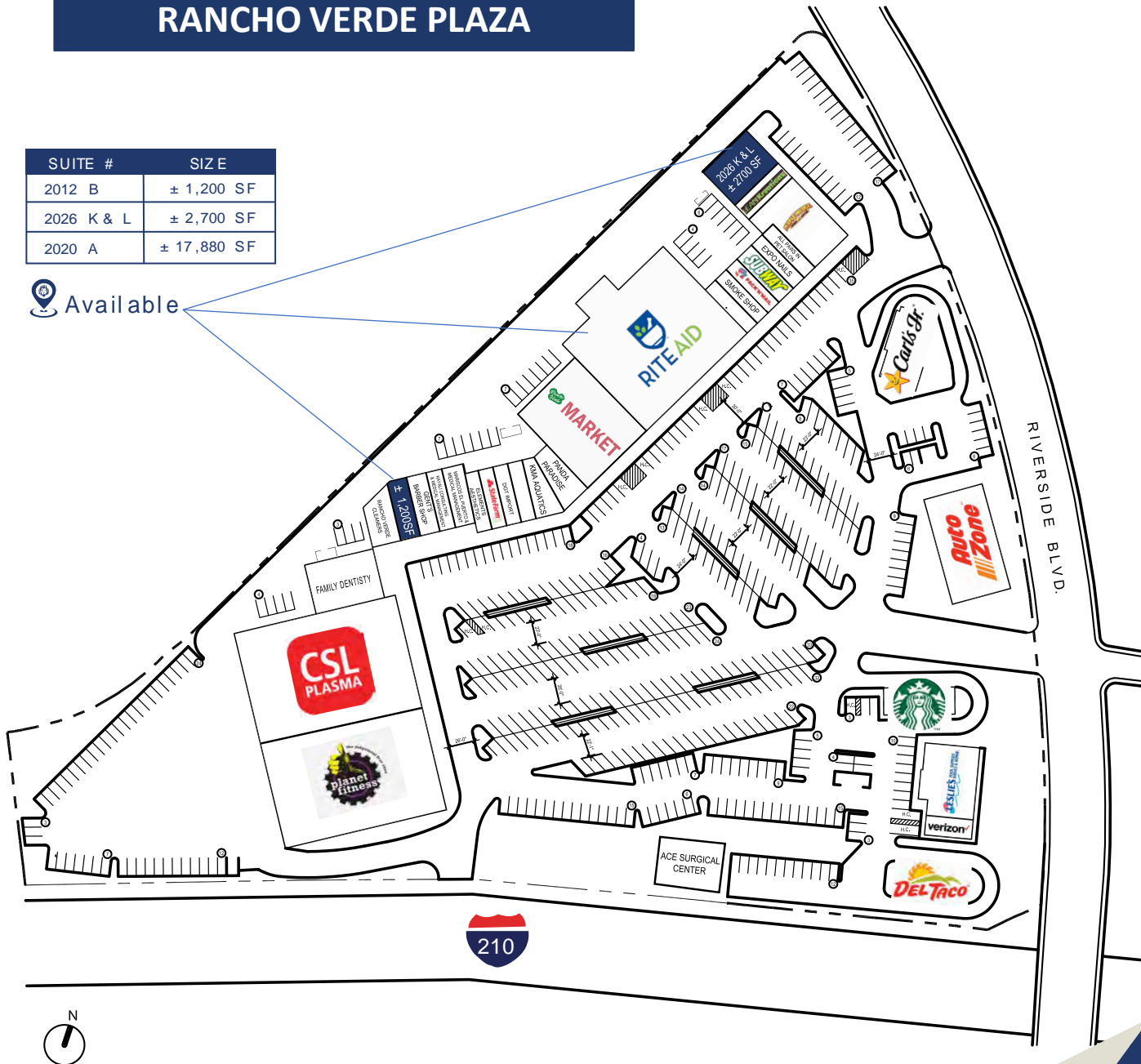
UNIT	NAME	SQ FT
2000	DEL TACO	2,300
2002 A & B	LESLIE'S POOL SUPPLIES	3,020
2002	VERIZON WIRELESS	1694
2004	STARBUCKS COFFEE CO.	1,950
2006	ACE SURGICAL CENTER	6,500
2008 A	PLANET FITNESS	18,500
2008 B	CLS PLASMA	17,381
2010 A & B	FAMILY DENTISTRY	3,500
2012 A	RANCHO VERDE CLEANERS	1,575
2012 B	AVAILABLE	1,200
2012 C	GENT'S BARBER SHOP	1,200
2012 D	KAYALI CONSULTING AND MEDICAL MANAGEMENT	900
2012 E	MARISCO'S EL PUERTO & MEXICAN FOOD	1,200
2012 F	ELEMENTS AESTHETICS	900
2012 G	STATE FARM	900
2012 H	DGT IMPORT	900
2012 J	MIRACLE STORE	900
2012 K	KMA AQUATIC	1,320
2012 L	PANDA PARADISE	1,585
2016 A, B & C	AUTOZONE	6,500
2018 A & B	RIALTO RANCH MARKET	8,000
2020 A	RITE AID	17,880
2022	CARL'S JR	2,859
2026 A	H & R BLOCK	1,200
2026 B	SMOKE SHOP	900
2026 C	PACK N MAIL	900
2026 D	SUBWAY	1,200
2026 E	EXPO NAILS	825
2026 F	PHILLIPS PET GROOMING	825
2026 G & H	MAPLE HOUSE	3,600
2026 J	LEAN KREATIONS	1,200
2026 K & L	AVAILABLE	2,700
	TOTAL	116,014



RANCHO VERDE PLAZA

SUITE #	SIZE
2012 B	± 1,200 SF
2026 K & L	± 2,700 SF
2020 A	± 17,880 SF

 Available



All materials and information received or derived from SharpLine its directors, officers, agents, advisors, affiliates and/or any third party sources are provided without representation or warranty as to completeness, veracity, or accuracy, condition of the property, compliance or lack of compliance with applicable governmental requirements, developability or suitability, financial performance of the property, projected financial performance of the property for any party's intended use or any and all other matters. Neither SharpLine its directors, officers, agents, advisors, or affiliates makes any representation or warranty, express or implied, as to accuracy or completeness of the any materials or information provided, derived, or received. Materials and information from any source, whether written or verbal, that may be furnished for review are not a substitute for a party's active conduct of its own due diligence to determine these and other matters of significance to such party. SharpLine will not investigate or verify any such matters or conduct due diligence for a party unless otherwise agreed in writing.

EACH PARTY SHALL CONDUCT ITS OWN INDEPENDENT INVESTIGATION AND DUE DILIGENCE.

Any party contemplating or under contract or in escrow for a transaction is urged to verify all information and to conduct their own inspections and investigations including through appropriate third-party independent professional selected by such party. All financial data should be verified by the party including by obtaining and reading applicable documents and reports and consulting appropriate independent professionals. SharpLine makes no warranties and/or representations regarding the veracity, completeness, or relevance of any financial data or assumptions. SharpLine does not serve as a financial advisor to any party regarding any proposed transaction. All data and assumptions regarding financial performance, including that used for financial modeling purposes, may differ from actual data or performance. Any estimates of market rents and/or projected rents that may be provided to a party do not necessarily mean that rents can be established at or increased to that level. Parties must evaluate any applicable contractual and governmental limitations as well as market conditions, vacancy factors and other issues in order to determine rents from or for the property. Legal questions should be discussed by the party with an attorney. Tax questions should be discussed by the party with a certified public accountant or tax attorney. Title questions should be discussed by the party with a title officer or attorney. Questions regarding the condition of the property and whether the property complies with applicable governmental requirements should be discussed by the party with appropriate engineers, architects, contractors, other consultants and governmental agencies. All properties and services are marketed by SharpLine in compliance with all applicable fair housing and equal opportunity laws.