



±10 MINUTE  
DRIVE TO CBD

±8 MINUTE  
DRIVE TO UAB

# OFFICE SPACE FOR SUBLEASE

600 Beacon Ridge Pkwy, Birmingham, AL 35209

Aggressive Lease Rate:  
Call For Pricing

## PROPERTY HIGHLIGHTS

- Mix of open and office space
- Furniture is available
- Scenic city views
- Free and common parking, on-site maintenance, after-hours access
- Common area conference room – Common area break room with vending machines



### ASKING RATE:

Call for Pricing



### AVAILABLE SPACE:

Suite 500: 9,788 SF



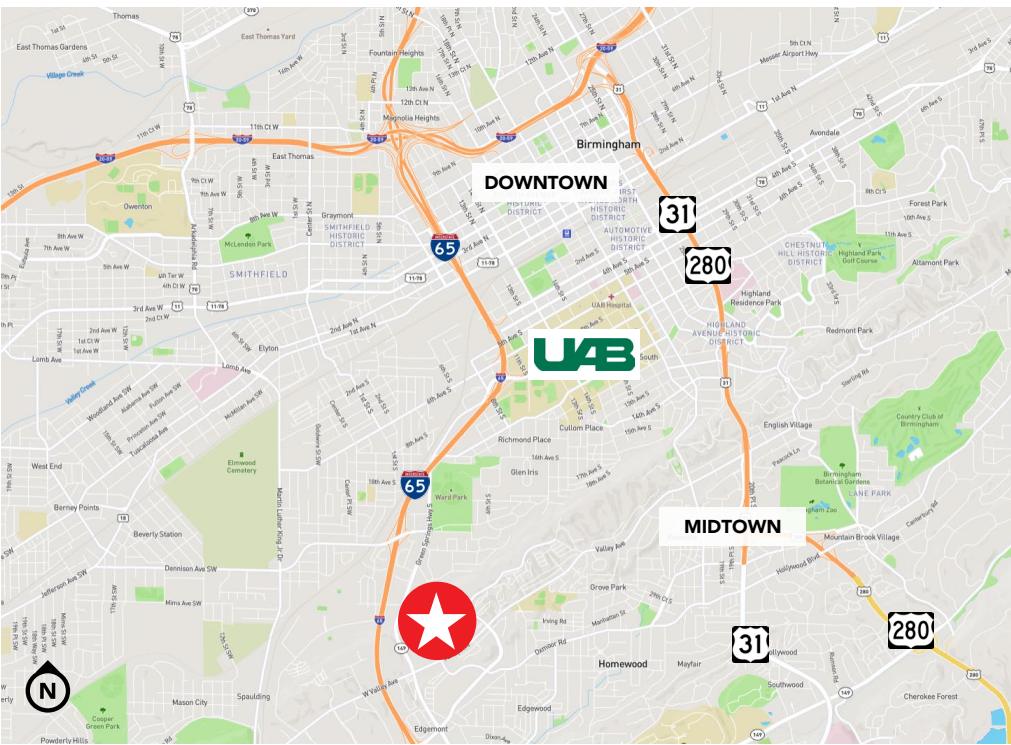
### LOCATION:

Conveniently located only 10 minutes from downtown with nearby interstate access



### EXPIRATION:

2/28/25



**HARBERT**  
REALTY SERVICES

TANNER SUMNERS

tsumners@harbertrealty.com | 205.458.8103

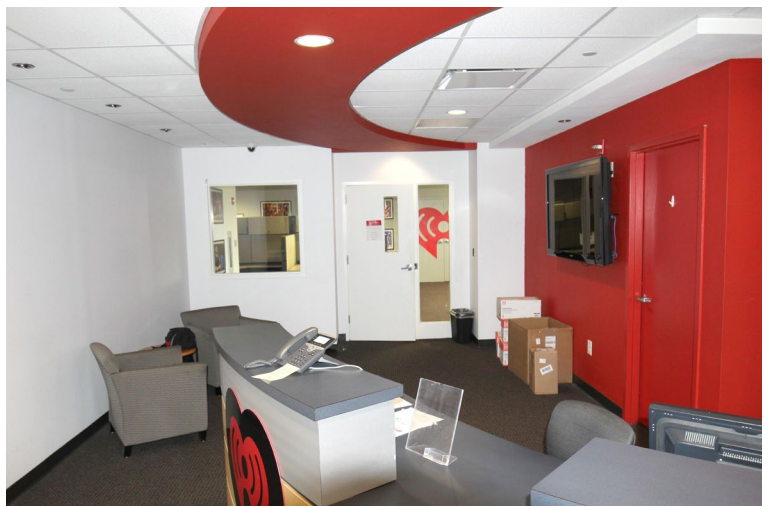
For More Information: [HarbertRealty.com](http://HarbertRealty.com)  
2 North 20th Street, #1700, Birmingham, AL 35203

The information contained herein has been obtained from sources deemed reliable, however, HRS makes no guarantees, warranties or representation as to its completeness or accuracy thereof. The presentation of this property is submitted subject to errors, omissions, change of price or conditions, prior to sale or lease or withdrawal without notice.

# OFFICE SPACE FOR SUBLEASE

600 Beacon Ridge Pkwy, Birmingham, AL 35209

Aggressive Lease Rate:  
Call For Pricing



TANNER SUMNERS  
tsumners@harbertrealty.com | 205.458.8103

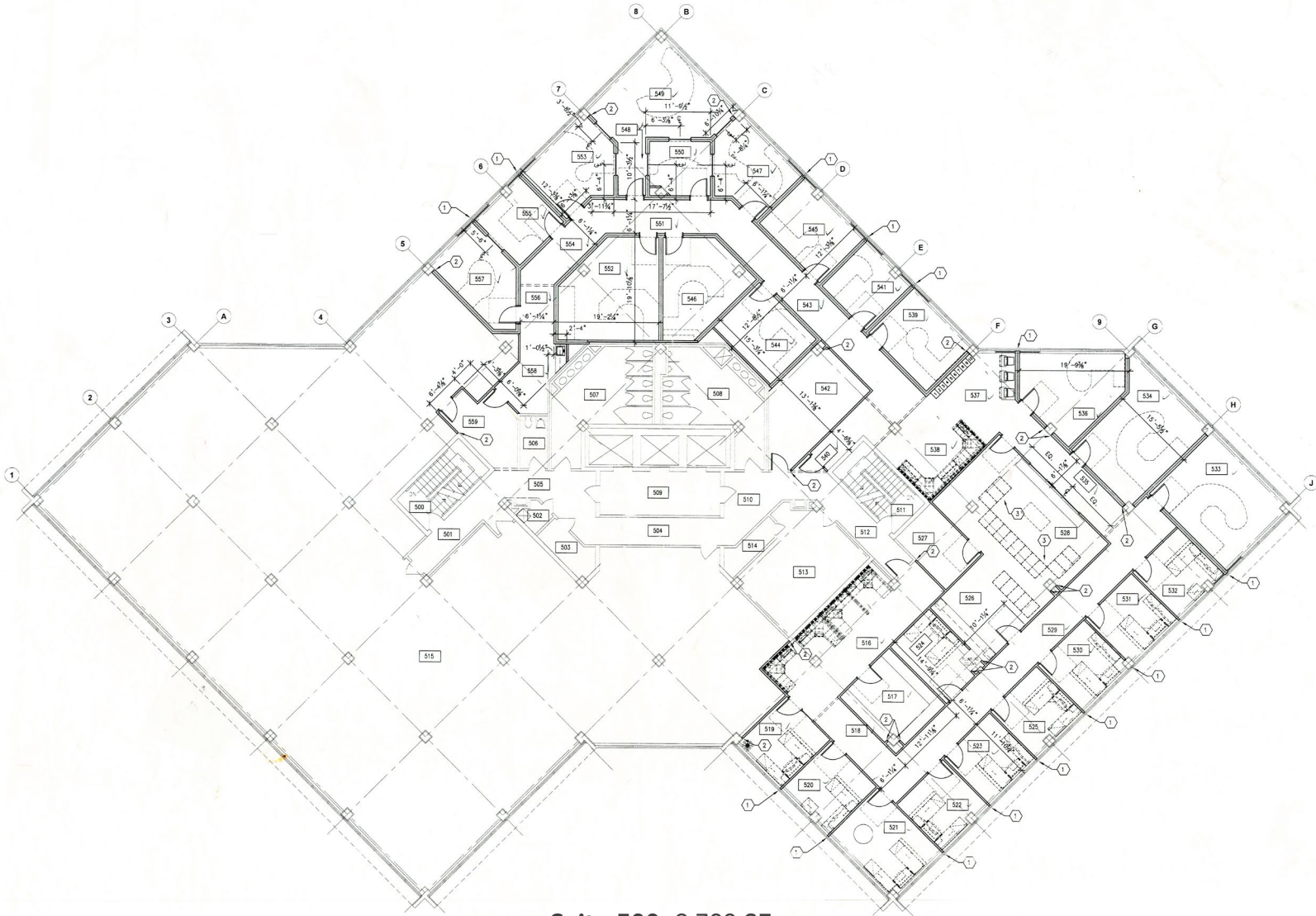
For More Information: [HarbertRealty.com](http://HarbertRealty.com)  
2 North 20th Street, #1700, Birmingham, AL 35203

The information contained herein has been obtained from sources deemed reliable, however, HRS makes no guarantees, warranties or representation as to its completeness or accuracy thereof. The presentation of this property is submitted subject to errors, omissions, change of price or conditions, prior to sale or lease or withdrawal without notice.

# OFFICE SPACE FOR SUBLEASE

600 Beacon Ridge Pkwy, Birmingham, AL 35209

Aggressive Lease Rate:  
Call For Pricing



**Suite 500: 9,788 SF**



**HARBERT**  
REALTY SERVICES

**TANNER SUMNERS**

tsumners@harbertrealty.com | 205.458.8103

**For More Information: HarbertRealty.com**  
2 North 20th Street, #1700, Birmingham, AL 35203

The information contained herein has been obtained from sources deemed reliable, however, HRS makes no guarantees, warranties or representation as to its completeness or accuracy thereof. The presentation of this property is submitted subject to errors, omissions, change of price or conditions, prior to sale or lease or withdrawal without notice.