



For Lease

Weathersfield Commons

1473-1521 W. Schaumburg Road, Schaumburg , IL 60194

\$7.00 - \$20.00 SF/yr (NNN)

This Walgreen's anchored center offers a spacious 91,000 sq.ft. retail space along vibrant Schaumburg Road. Spaces ranging from 565 sq.ft. to 31K sq.ft. The property boasts ample parking with 400 spaces and a parking ratio of 4.38 spaces per 1,000 sq.ft. Benefit from high traffic counts exceeding 35K vehicles daily, coupled with a substantial frontage of 779 feet.

Join existing businesses: Walgreens, Prima Deli, Rising Early Cafe, Alpine Cleaners and more.

Contact us:

Brad Belden

Senior Vice President

847 698 8232

Brad.Belden@colliers.com

This document/email has been prepared by Colliers for advertising and general information only. Colliers makes no guarantees, representations or warranties of any kind, expressed or implied, regarding the information including, but not limited to, warranties of content, accuracy and reliability. Any interested party should undertake their own inquiries as to the accuracy of the information. Colliers excludes unequivocally all inferred or implied terms, conditions and warranties arising out of this document and excludes all liability for loss and damages arising there from. This publication is the copyrighted property of Colliers and /or its licensor(s). © 2022. All rights reserved.

Colliers

www.colliers.com/en/countries/united-states/cities/chicago/chicago-retail-sales-and-leasing-team

Property Summary



Property Description

Spaces ranging from 565 sq.ft. to 31K sq.ft., including a 14K sq.ft. area with 12'+ ceilings. The property boasts ample parking with 400 spaces and a parking ratio of 4.38 spaces per 1,000 sq.ft. Benefit from high traffic counts exceeding 35K vehicles daily, coupled with a substantial frontage of 779 feet.

Offering Summary

Lease Rate:	\$7.00 - 20.00 SF/yr (NNN)
Available SF:	565 - 33,974 SF
Building Size:	91,000 SF
Taxes:	\$6.25 SF/yr
Expenses:	\$2.75 SF/yr

Property Highlights

- Walgreen's Anchored Center
- Monument Signage Along Schaumburg Road
- Space available from 565 sq.ft. to 31,000 sq.ft.
- 14,000 sq.ft. space with 12' ceilings
- 31K Former Banquet Hall Space- 16' Ceilings
- 400 parking spaces
- 4.38 parking spaces per 1,000 square feet
- Traffic counts over 35,000 along Schaumburg
- Significant Schaumburg Rd. frontage of 779 feet
- Average Household Income over \$100,000
- Direct access to neighboring properties

Spaces	Lease Rate	Space Size
1473 W. Schaumburg Road	\$10.00 SF/yr	11,205 SF
1479 W. Schaumburg Road	\$14.00 SF/yr	1,900 - 33,974 SF
1483 W. Schaumburg Road	\$10.00 SF/yr	4,221 - 33,974 SF
1483B W. Schaumburg Road	\$12.00 SF/yr	2,000 - 33,974 SF
1485 W. Schaumburg Road	\$12.00 SF/yr	1,417 - 33,974 SF
1487 W. Schaumburg Road	\$12.00 SF/yr	2,995 - 33,974 SF
1489 W. Schaumburg Road	\$10.00 SF/yr	1,260 - 33,974 SF
1491 W. Schaumburg Road	\$14.00 SF/yr	4,229 - 33,974 SF
1499B W. Schaumburg Road	\$16.00 SF/yr	660 SF
1503 W. Schaumburg Road	\$20.00 SF/yr	565 SF
1507 W. Schaumburg Road	\$20.00 SF/yr	988 SF
1509 W. Schaumburg Rd	\$18.40 SF/yr	1,400 SF
1515 W. Schaumburg Road	\$16.00 SF/yr	1,400 SF
1519-1521 W. Schaumburg Road	\$7.00 SF/yr	31,401 SF

Brad Belden

Senior Vice President
847 698 8232
Brad.Belden@colliers.com

Site Plan



SUITE	TENANT	SQ-FT
1461	WALGREENS	13,650
1473	AVAILABLE	11,205
1475	FASHION BAGS	630
1475A	ALPINE CLEANERS	630
1477	Early Rising Cafe	1852
1479	AVAILABLE	1,900
1481	Prima Deli	14,100
1483	AVAILABLE	4,221
1483B	STORAGE	2,000
1485	AVAILABLE	1,417
1487	AVAILABLE	2,995
1489	AVAILABLE	1,260
1491	AVAILABLE	4,229
1493	STORAGE	1,000
1495-97	US-ARMED FORCE	3,938
1499A	US-ARMED FORCE	920
1499B	AVAILABLE	660
1503	AVAILABLE	565
1505-05B	DR ANTONIO R.	2,290
1507	AVAILABLE	988
1509	AVAILABLE	1,400
1515	AVAILABLE	1,400
1519-21	AVAILABLE	31,401

Brad Belden
 Senior Vice President
 847 698 8232
 Brad.Belden@colliers.com

Property Details



565 - 31K sq.ft.

Space Size



\$104K

Average HH Income



94K

Households



400

Parking Spaces



\$274K

Median House Value



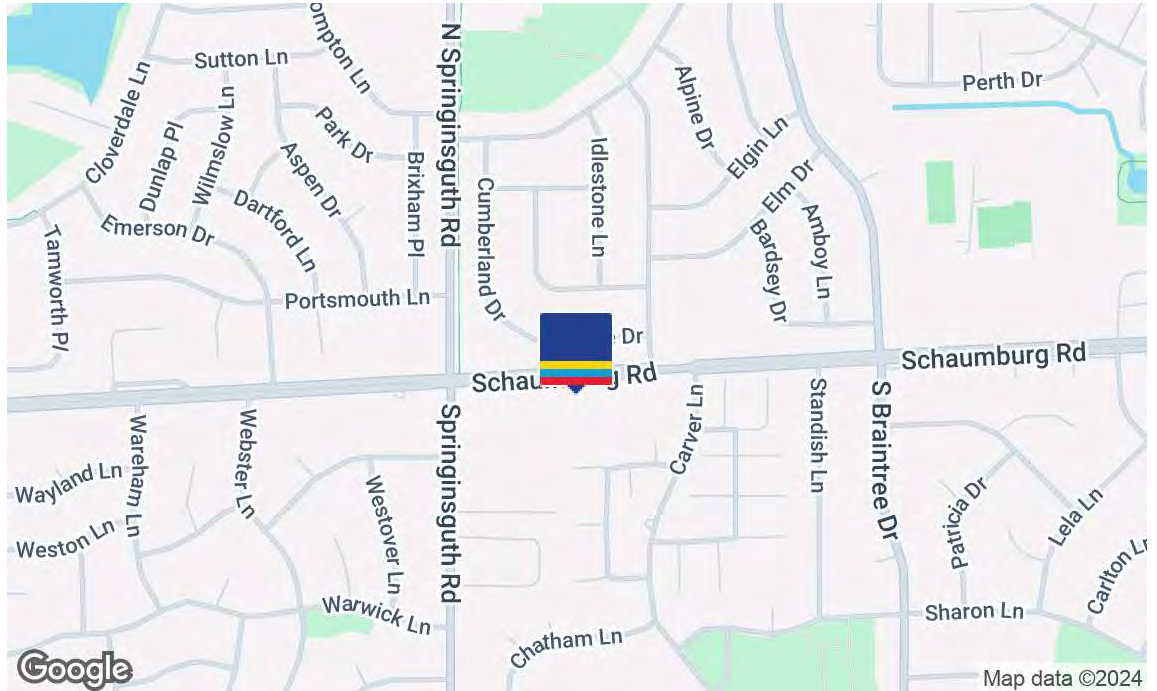
249K

Population



35K

Traffic Counts



Location Overview

Schaumburg is in Cook County and is one of the best places to live in Illinois. One of its most famous attractions is the Woodfield Mall, which is one of the largest shopping centers in the United States. Additionally, there are numerous restaurants, theaters, and other entertainment venues in and around Schaumburg. The population of Schaumburg is known for having a diverse and educated population.

Area Tenants

- Supercuts
- Michael's
- Starbuck's
- Chuck E Cheese
- Walgreen's
- Papa John's
- O'Reilly Auto Parts
- Smoothie King
- FedEx
- Jewel Osco
- Lou Malnati's
- Tony's Fresh Market
- Subway
- Ulta Beauty
- Joann
- American Mattress
- Bucky's
- Panda Express
- Poke Bros.
- Dollar Tree
- Boost Mobile
- Panera Bread
- Portillo's
- Taco Bell
- Dunkin
- McDonald's
- KFC
- American Freight
- Sally Beauty
- Sonic
- Esporta
- Kohl's

Brad Belden
Senior Vice President
847 698 8232
Brad.Belden@colliers.com

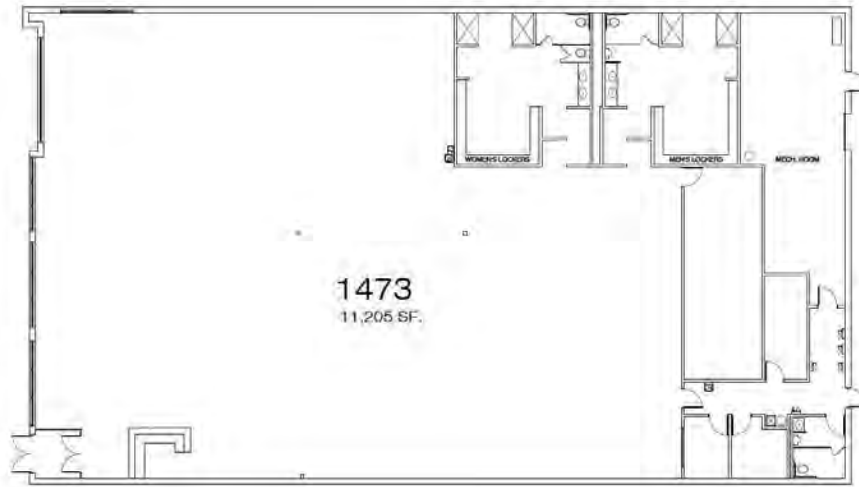


For Lease 1473-1521 W. Schaumburg Road, Schaumburg, IL 60194

[View Online](#)

[View Video](#)

Unit #1473 - 11,205 sq.ft.



FLOOR PLAN
2014-10-15

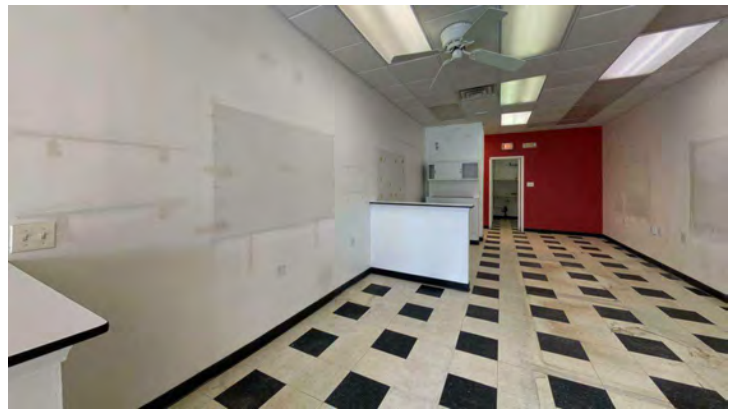


Brad Belden
Senior Vice President
847 698 8232
Brad.Belden@colliers.com

www.colliers.com/en/countries/united-states/cities/chicago/chicago-retail-sales-and-leasing-team



Unit #1475 - Former Barber Shop



Brad Belden
Senior Vice President
847 698 8232
Brad.Belden@colliers.com

For Lease 1473-1521 W. Schaumburg Road, Schaumburg, IL 60194

[▶ View Online](#)

[▶ View Video](#)

Unit #1479 - 1,900 sq.ft.

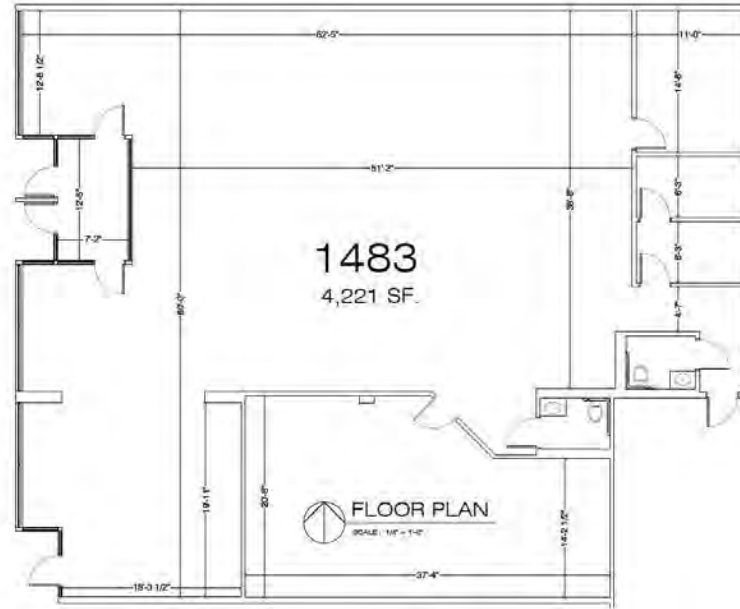


Brad Belden
Senior Vice President
847 698 8232
Brad.Belden@colliers.com

www.colliers.com/en/countries/united-states/cities/chicago/chicago-retail-sales-and-leasing-team

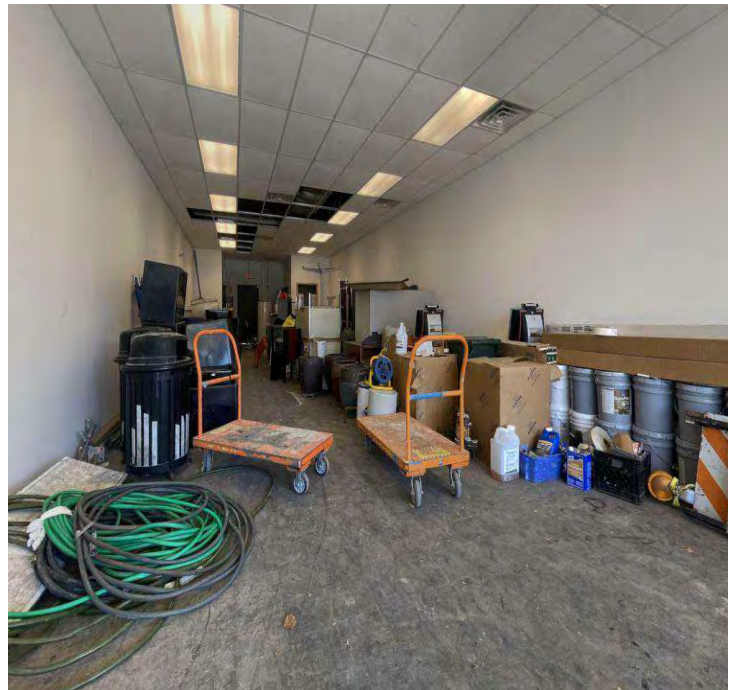
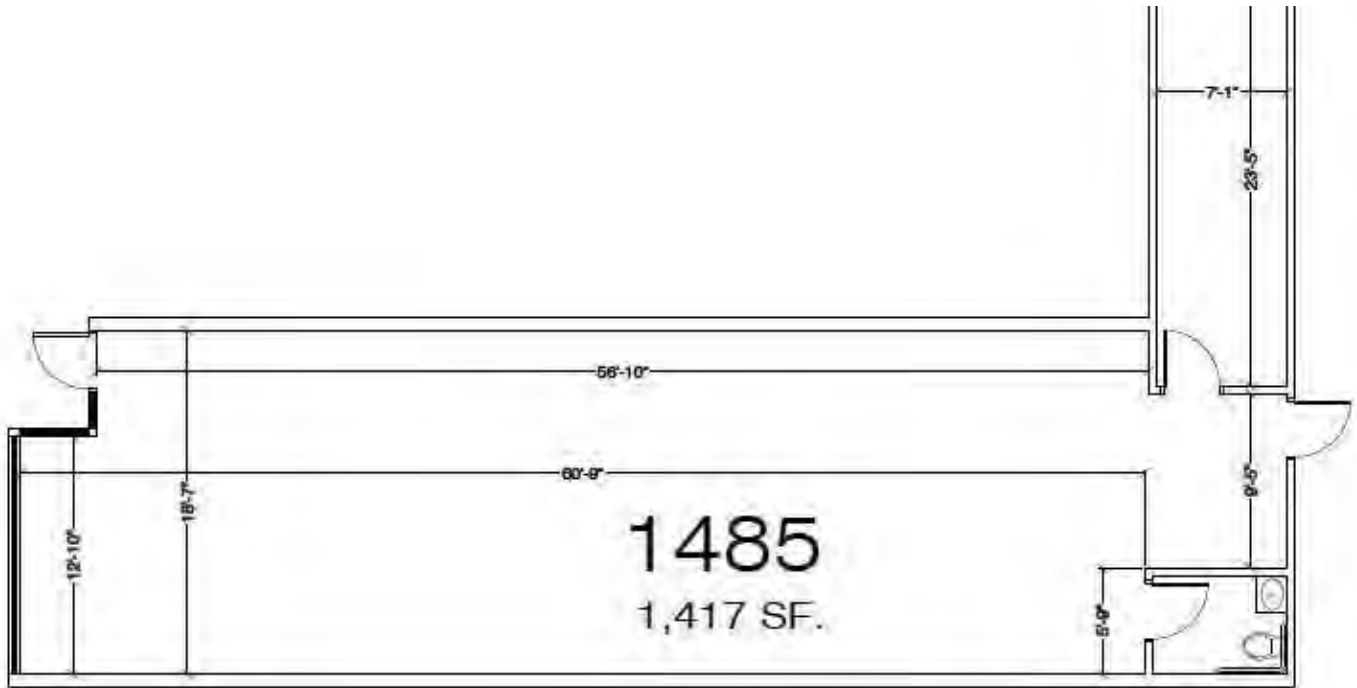


Unit #1483 - 4,221 sq.ft.



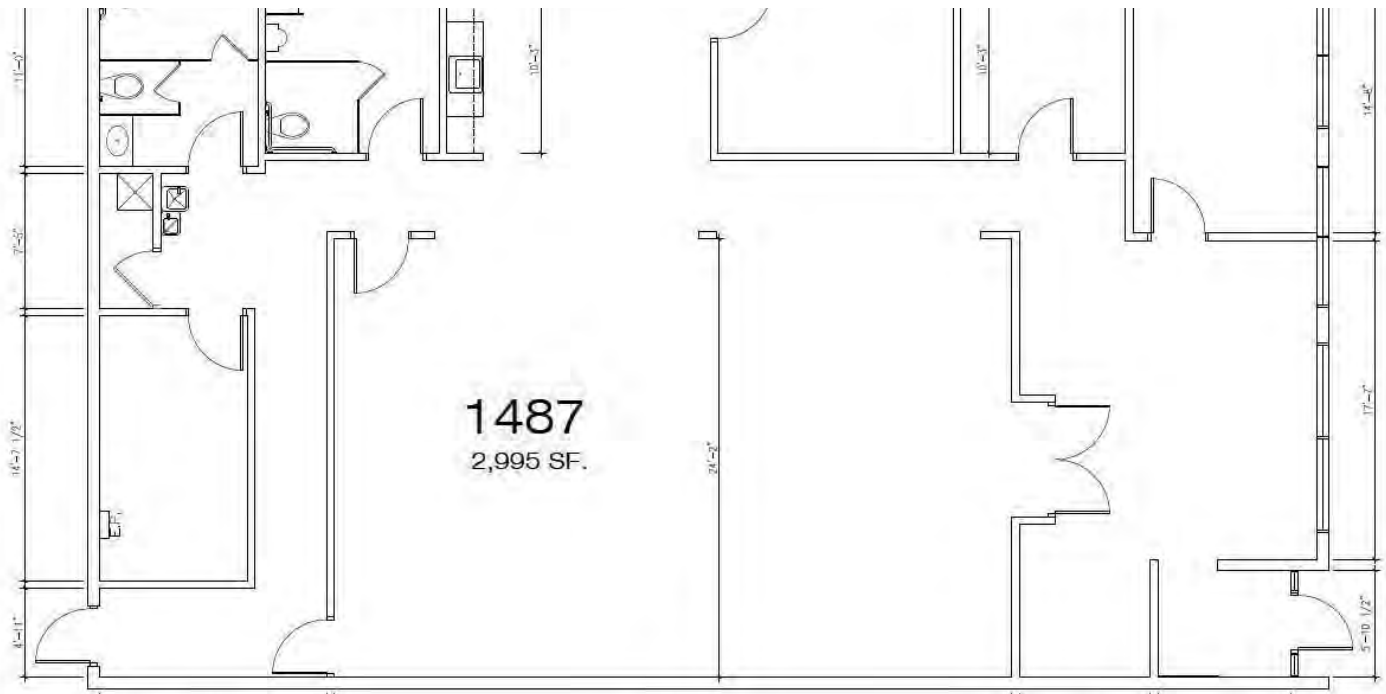
Brad Belden
Senior Vice President
847 698 8232
Brad.Belden@colliers.com

Unit #1485 - 1,417 sq.ft.



Brad Belden
Senior Vice President
847 698 8232
Brad.Belden@colliers.com

Unit #1487 - 2,995 sq.ft.



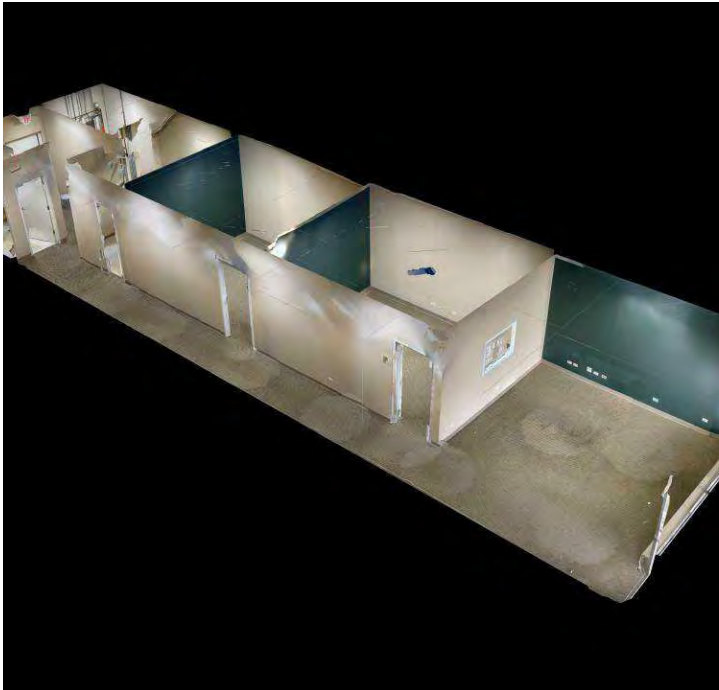
Brad Belden
Senior Vice President
847 698 8232
Brad.Belden@colliers.com

For Lease 1473-1521 W. Schaumburg Road, Schaumburg, IL 60194

[View Online](#)

[View Video](#)

Unit #1489 - 1,260 sq.ft.



Brad Belden
Senior Vice President
847 698 8232
Brad.Belden@colliers.com

www.colliers.com/en/countries/united-states/cities/chicago/chicago-retail-sales-and-leasing-team



For Lease 1473-1521 W. Schaumburg Road, Schaumburg , IL 60194

[▶ View Online](#)

[▶ View Video](#)

Unit #1491 - 4,229 sq.ft.



Brad Belden
Senior Vice President
847 698 8232
Brad.Belden@colliers.com

www.colliers.com/en/countries/united-states/cities/chicago/chicago-retail-sales-and-leasing-team

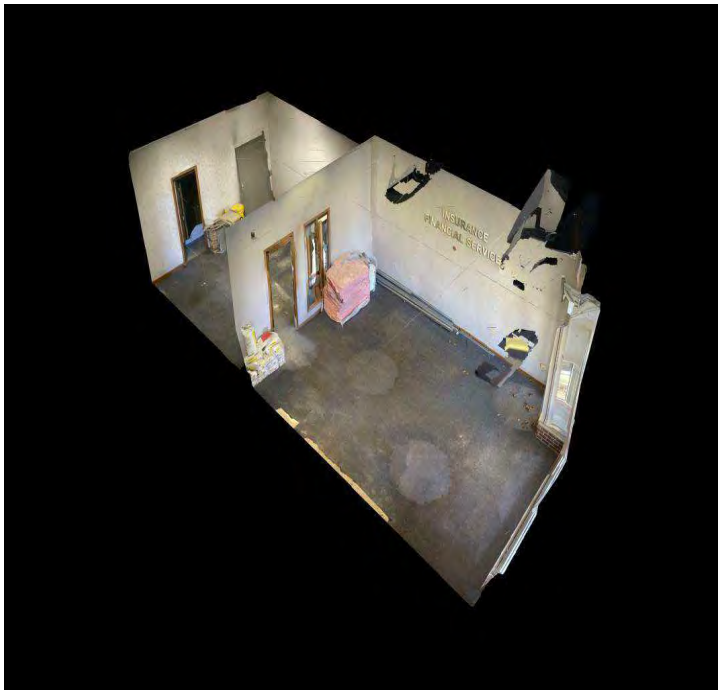


For Lease 1473-1521 W. Schaumburg Road, Schaumburg, IL 60194

[View Online](#)

[View Video](#)

Unit #1499B - 660 sq.ft.



Brad Belden
Senior Vice President
847 698 8232
Brad.Belden@colliers.com

www.colliers.com/en/countries/united-states/cities/chicago/chicago-retail-sales-and-leasing-team



For Lease 1473-1521 W. Schaumburg Road, Schaumburg, IL 60194

[View Online](#)

[View Video](#)

Unit #1503 - 565 sq.ft.



Brad Belden
Senior Vice President
847 698 8232
Brad.Belden@colliers.com

www.colliers.com/en/countries/united-states/cities/chicago/chicago-retail-sales-and-leasing-team

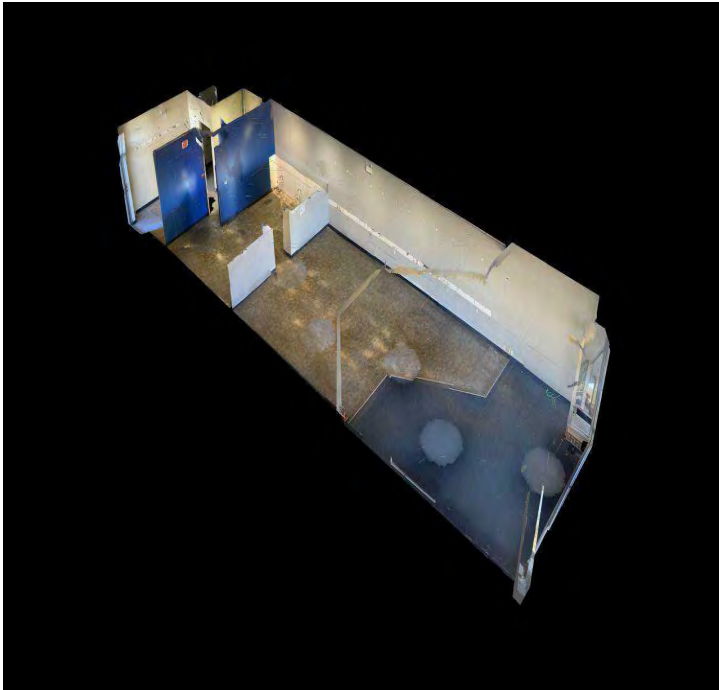


For Lease 1473-1521 W. Schaumburg Road, Schaumburg, IL 60194

[▶ View Online](#)

[▶ View Video](#)

Unit #1509 - 1,400 sq.ft.



Brad Belden
Senior Vice President
847 698 8232
Brad.Belden@colliers.com

www.colliers.com/en/countries/united-states/cities/chicago/chicago-retail-sales-and-leasing-team



For Lease 1473-1521 W. Schaumburg Road, Schaumburg, IL 60194

[View Online](#)

[View Video](#)

Unit #1515 - 1,400 sq.ft.

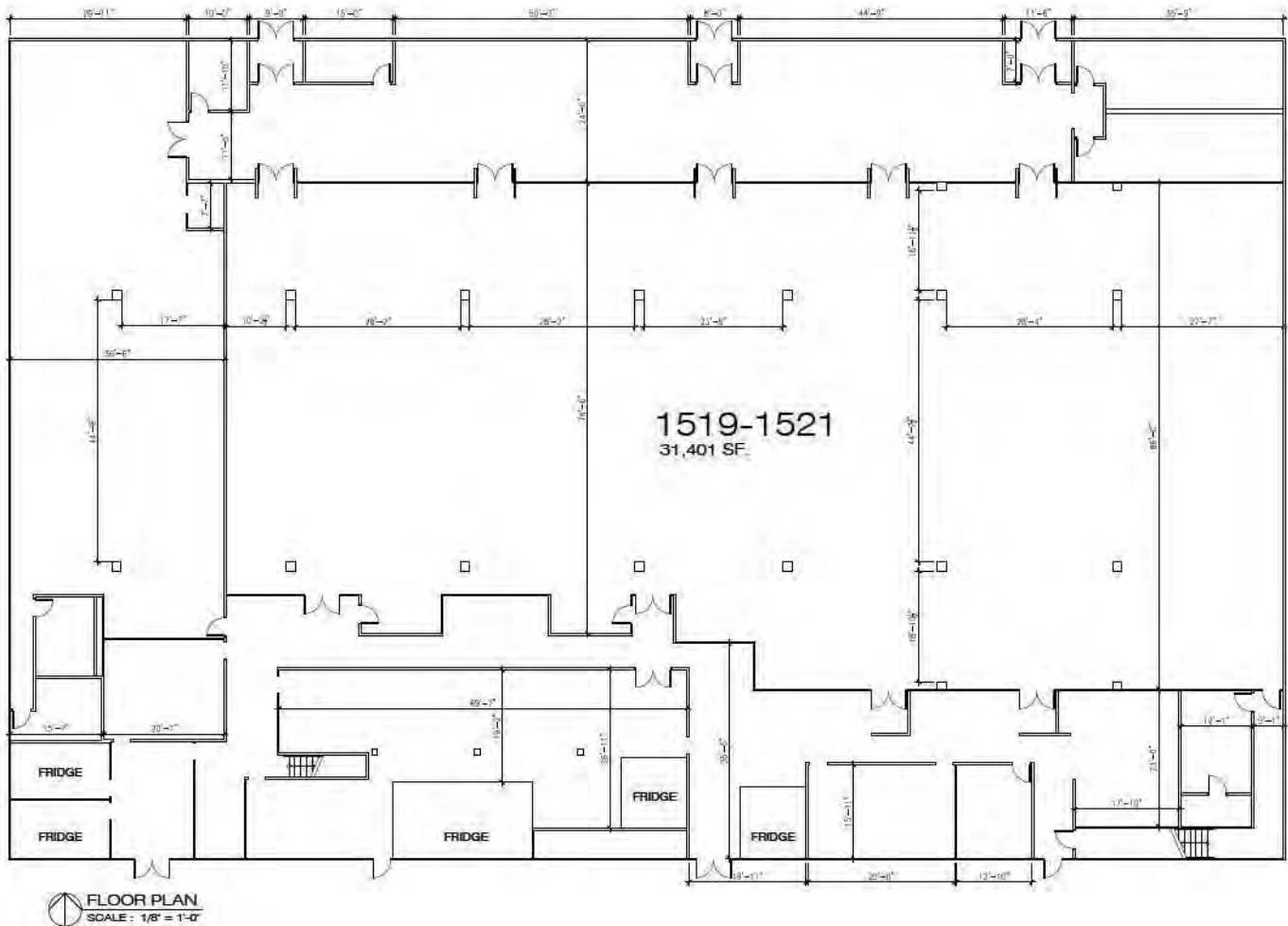


Brad Belden
Senior Vice President
847 698 8232
Brad.Belden@colliers.com

www.colliers.com/en/countries/united-states/cities/chicago/chicago-retail-sales-and-leasing-team



Unit #1519-1521 - 31,401 sq.ft.



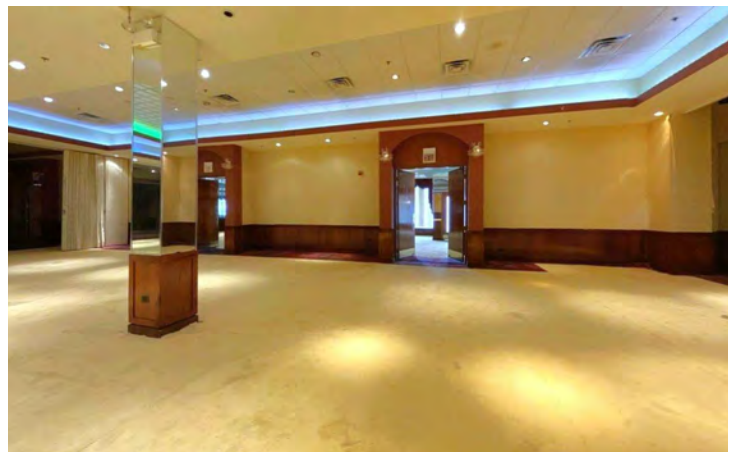
Brad Belden
Senior Vice President
847 698 8232
Brad.Belden@colliers.com

For Lease 1473-1521 W. Schaumburg Road, Schaumburg, IL 60194

[View Online](#)

[View Video](#)

Unit #1519-1521 - 31,401 sq.ft.

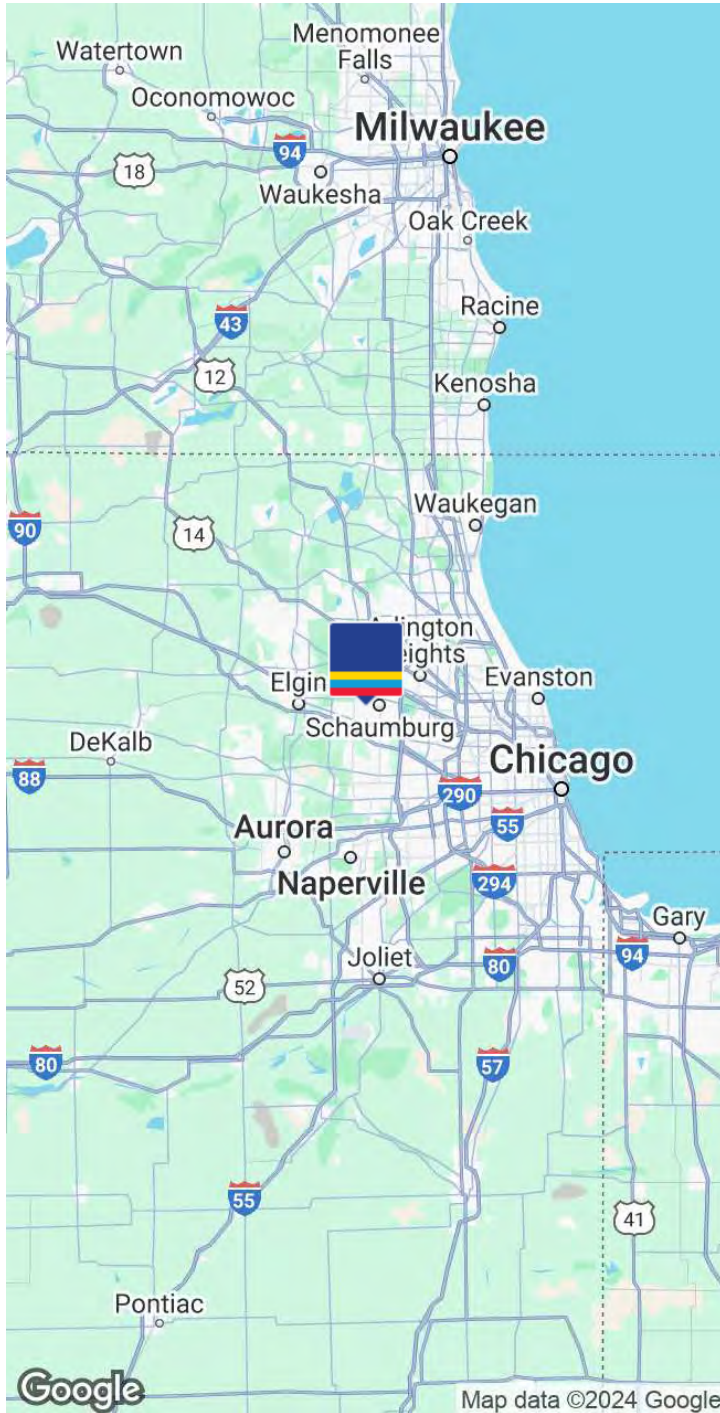


Brad Belden
Senior Vice President
847 698 8232
Brad.Belden@colliers.com

www.colliers.com/en/countries/united-states/cities/chicago/chicago-retail-sales-and-leasing-team



Location Map



Demographics	1 Mile	3 Miles	5 Miles
Total population	15,596	132,719	249,203
Median age	42.4	38.4	39.6
Median age (Male)	42.0	37.8	39.0
Median age (Female)	43.0	39.1	40.1
Total households	5,784	49,149	93,834
Total persons per HH	2.7	2.7	2.7
Average HH income	\$103,498	\$89,859	\$99,564
Average house value	\$274,319	\$229,601	\$255,935

Brad Belden
 Senior Vice President
 847 698 8232
 Brad.Belden@colliers.com

