

OFFICE BUILDING FOR LEASE

Highland Executive Building

2500 Raeford Rd, Fayetteville, NC 28305



for more information

VISHAL NANDWANI

Broker

O: 910.829.1617

C: 910.578.4797

vishal@grantmurrayre.com



Grant - Murray

REAL ESTATE, LLC

COMMERCIAL AND INVESTMENT BROKERAGE

150 N. McPherson Church Rd | Fayetteville, NC 28303 | www.grantmurrayre.com



PROPERTY OVERVIEW

| | |
|-------------------------|--|
| Available SF: | 242 - 342 SF |
| Lease Rate: | \$600.00 - 650.00 per month (Full Service) |
| Lot Size: | 0.93 Acres |
| Year Built: | 1994 |
| Building Size: | 18,873 SF |
| Zoning: | CC |
| Number of Units: | 4 |
| Market: | Fayetteville |

Property Description

Single office units available that measure app. 250-280 SF. Common restrooms. Utilities included.

Property Overview:

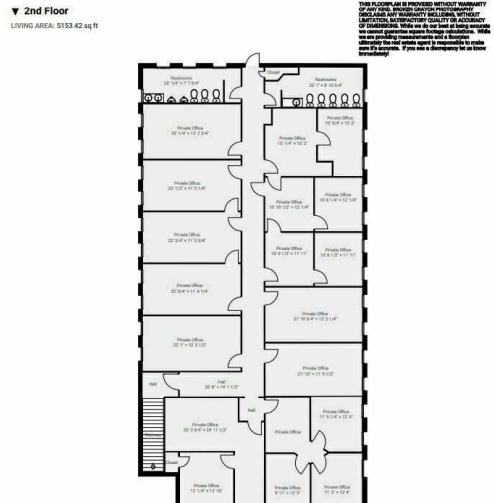
This property sits in an ideal location, directly across from the oldest country club in Fayetteville. This property is centrally located on Raeford Rd., near the Harris-Teeter Shopping Center. Haymont and Fayetteville's historic downtown district are in close proximity to the building. Minutes from the Robeson St. interchange of the Martin Luther King Jr. Highway (NC-87 HWY) make for easy access to other highways, including I-95.

Single office units available that measure app. 250-280 SF. Common restrooms. Utilities included.

Highland Executive Building

2500 RAEFORD RD, FAYETTEVILLE, NC 28305

LEASE SPACES



LEASE INFORMATION

| | | | |
|--------------|--------------|-------------|-------------------------------|
| Lease Type: | Full Service | Lease Term: | Negotiable |
| Total Space: | 242 - 342 SF | Lease Rate: | \$600.00 - \$650.00 per month |

AVAILABLE SPACES

| SUITE | TENANT | SIZE (SF) | LEASE TYPE | LEASE RATE | DESCRIPTION |
|-----------------------------|-----------|-----------|--------------|-----------------|-------------|
| 2504 Raeford Rd- Suite 107 | Available | 342 SF | Full Service | \$650 per month | - |
| 2504 Raeford Rd - Suite 201 | Available | 306 SF | Full Service | \$650 per month | - |
| 2504 Raeford Rd- Suite 203 | Available | 242 SF | Full Service | \$600 per month | - |
| 2504 Raeford Rd- Suite 205 | Available | 242 SF | Full Service | \$600 per month | - |
| 2504 Raeford Rd- Suite 209 | Available | 242 SF | Full Service | \$600 per month | - |

for more information

VISHAL NANDWANI
 Broker
 O: 910.829.1617
 C: 910.578.4797
 vishal@grantmurrayre.com



Grant - Murray
 REAL ESTATE, LLC
 COMMERCIAL AND INVESTMENT BROKERAGE

APPLY NOW!

2504 Raeford Rd, #TBD, Fayetteville, NC 28305

Vishal Nandwani

 (910) 578-4797  vishal@grantmurrayre.com

License No. 314170
Grant-Murray Real Estate

You will submit your:

- Rental Application
- Credit Report & Score*
- Criminal Background Check*
- Eviction Related Proceedings*

*Reports by TransUnion.



Apply today by scanning the QR
code above or
visiting the following link

<https://apply.link/3PEq6ZI>



Screening with RentSpree is a no-brainer

1. No damage to credit score (Soft credit inquiry)
2. Screening reports are instantly pulled and shared
3. Sensitive personal information is protected
4. The application is saved making it easier to re-apply

If you have any questions or issues, contact support@rentspree.com.