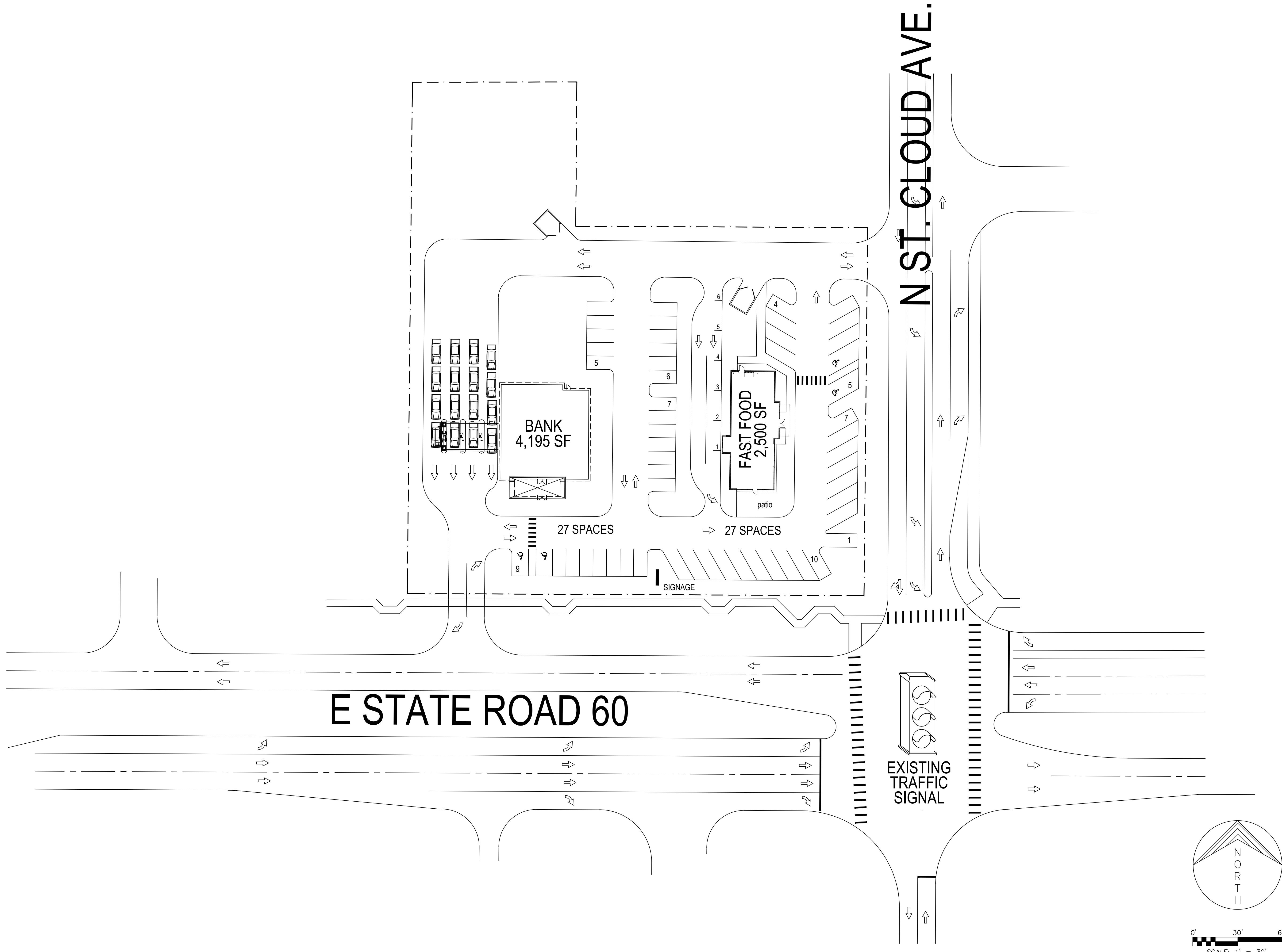


P:\Retail Asset Management Site plans\SR 60 & St. Cloud - Hillsborough Co. 20-0075.mkt\site plans\20-0075.001 sp--2.dwg Plotted: May 13, 2020 - 3:13pm by jbrown



REVISIONS	BY

**KPMFranklin**  
ENGINEERS • PLANNERS • SURVEYORS  
6300 HAZELTINE NATIONAL DRIVE, STE. 118  
ORLANDO, FL 32822 | PHONE (407) 410-8624  
CERTIFICATE OF AUTHORIZATION: 32058

WARNING  
IF THIS SCALE DOES NOT MATCH THIS COPY OF THIS DOCUMENT IS NOT TO SCALE

JAMES D. BROWN, RLA  
FLORIDA #001508

**Retail @ S.R. 60 & N. St. Cloud**  
Hillsborough County, Florida  
Retail Asset Management, Inc.  
P.O. Box 5666  
Clearwater, Florida 33758-5666

DRAWN:	JDB
CHECKED:	JDB
DATE:	5/13/20
SCALE:	1" = 30'
JOB No:	2-0075.mkt
SHEET:	<b>SP-2</b>

SITE PLAN