

DISSTON PLAZA

3501 49TH ST N, SAINT PETERSBURG, FL 33710

FOR LEASE



LOCATION DESCRIPTION

Located at the intersection of 49th St N & 38th Ave N.

PROPERTY HIGHLIGHTS

- High-volume Publix anchored center in one of Florida's densest markets, St. Petersburg, Tampa MSA. Publix rebuilt in 2018 to the latest company prototype as a part of the \$7.5 million in capital investments made in 2018 including a new roof for the entire center and upgrades to landscaping, parking lot, lighting, etc.
- Other tenants include Bealls Outlet, Pet Supermarket, Dollar Tree, and more.
- Strategically located within the most densely populated county in Florida.
- Excellent visibility to a combined traffic count of 40,400 vehicles per day with immediate access from a signalized intersection.



DEMOGRAPHICS 0.25 MILES 0.5 MILES 1 MILE

Total Population	17,305	130,997	313,665
Daytime Population	10,544	118,238	309,476
Households	7,572	57,208	145,661
Average HH Income	\$80,884	\$78,332	\$85,878



STEVE ELLIS

steve.ellis@tscg.com
336.209.5262

RYAN WADDELL

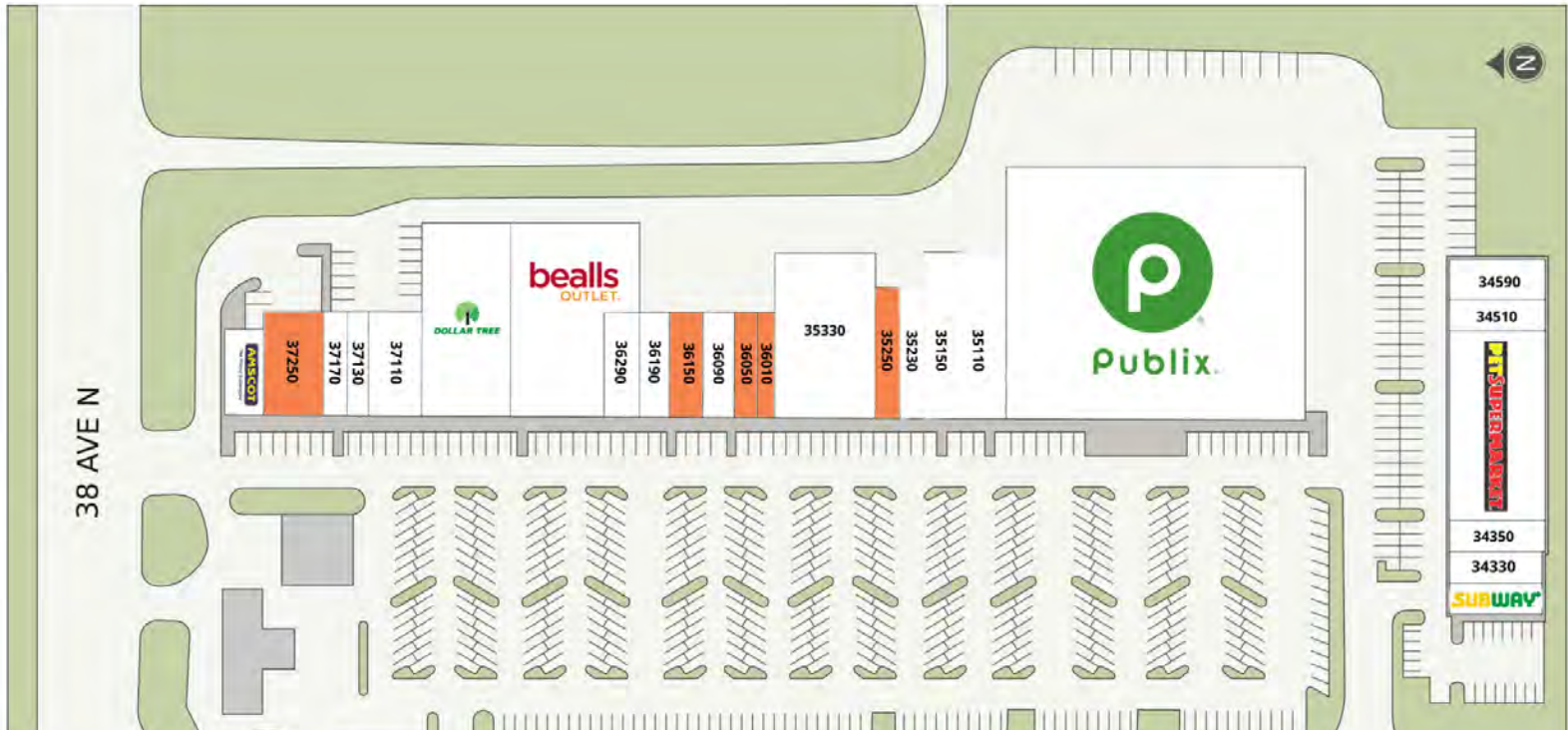
ryan.waddell@tscg.com
813.842.0283



DISSTON PLAZA

3501 49TH ST N, SAINT PETERSBURG, FL 33710

FOR LEASE



SUITE	TENANT NAME	SPACE SIZE	SUITE	TENANT NAME	SPACE SIZE	SUITE	TENANT NAME	SPACE SIZE
3431B	Subway	1,320 SF	35230	Little Italy Pizza	2,000 SF	36290	D'Lites Emporium	1,200 SF
34330	China Wok	1,320 SF	35250	Available	2,000 SF	36350	Bealls	14,450 SF
34350	DML Optical	1,424 SF	35330	The Hospice Foundation	10,000 SF	37010	Dollar Tree	10,500 SF
34390	Pet Supermarket	5,220 SF	36010	Available	1,200 SF	37110	Greenburg Dental Associates	3,200 SF
34510	Barber Shop	780 SF	36050	Available	1,200 SF	37130	Liberty Tax Services	1,227 SF
34590	Disston Plaza Bingo	4,954 SF	36090	Boggs Jewelry	2,363 SF	37170	OneMain Financial	1,900 SF
35010	Publix	45,600 SF	36150	Available	2,000 SF	37250	Available	3,600 SF
35110	Affinity Home Medical Equip...	4,375 SF	36190	Disston Liquors	2,000 SF	37390	Amスコ Financial	2,192 SF
35150	Signature Nails	3,125 SF						



STEVE ELLIS
 steve.ellis@tscg.com
 336.209.5262

RYAN WADDELL
 ryan.waddell@tscg.com
 813.842.0283



DISSTON PLAZA

3501 49TH ST N, SAINT PETERSBURG, FL 33710

FOR LEASE



STEVE ELLIS

steve.ellis@tscg.com
336.209.5262

RYAN WADDELL

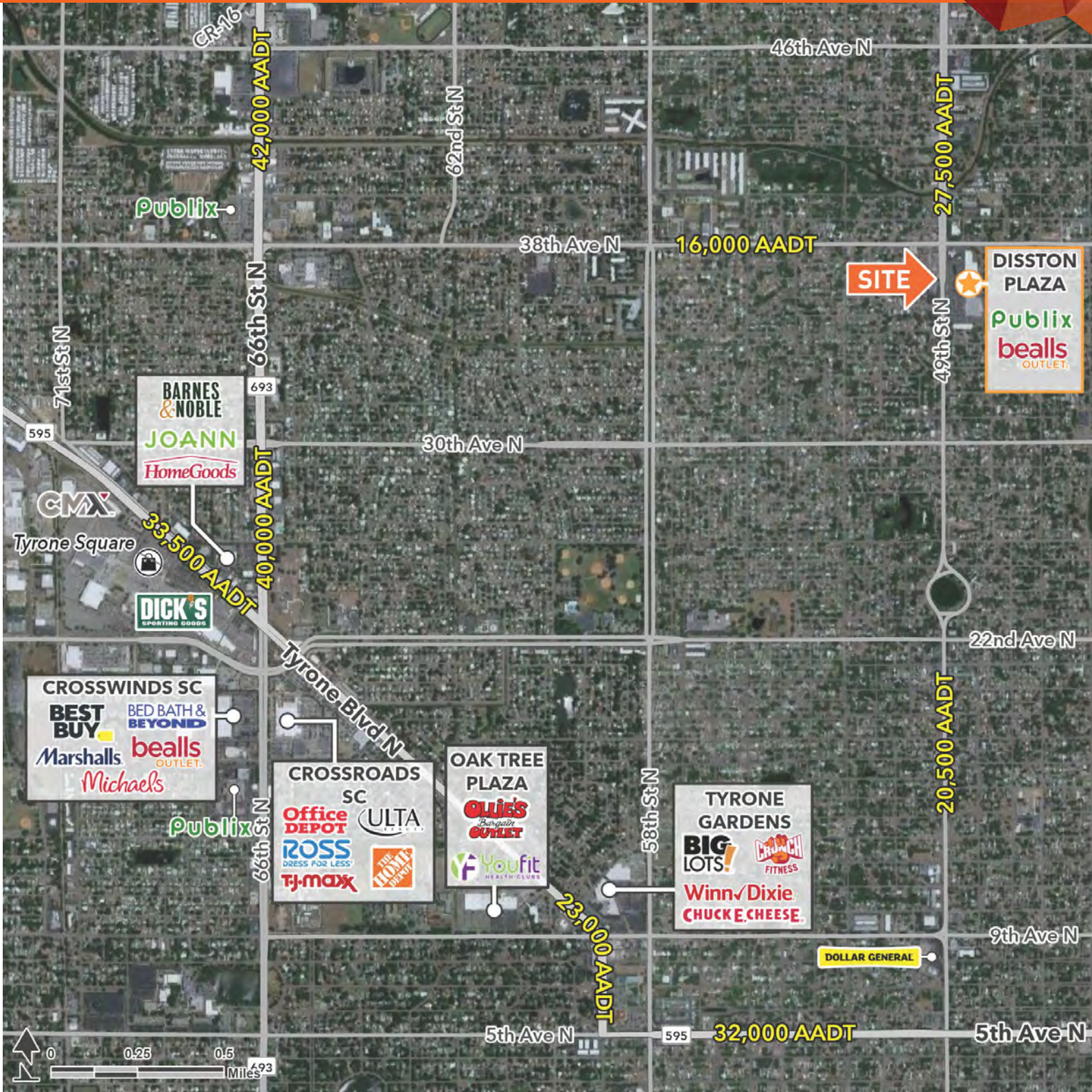
ryan.waddell@tscg.com
813.842.0283



DISSTON PLAZA

FOR LEASE

3501 49TH ST N, SAINT PETERSBURG, FL 33710



STEVE ELLIS

steve.ellis@tscg.com
336.209.5262

RYAN WADDELL

ryan.waddell@tscg.com
813.842.0283

