

4520 GLENMEADE LANE
AUBURN HILLS, MICHIGAN

INDUSTRIAL FOR SALE OR LEASE
22,584 Square Feet Available



**SIGNATURE
ASSOCIATES**
KNOW SIGNATURE | KNOW RESULTS



PROPERTY FEATURES

- 22,584 square feet available
- 4,560 square feet of office
- 18' clear height
- (1) 12x14 grade level door, (2) truckwells
- Nice image and excellent warehouse/distribution
- 1,000 square feet of web lab in shop
- New roof and HVAC in 2018 with warranties
- 1,000 amps, 480/240 volts power
- Sale Price: \$3,161,760 (\$140.00/sq. ft.)
- Lease Rate: \$8.95/sq. ft. NNN



For more information, please contact:

PAUL HOGE
(248) 948 0103
paulhoge@signatureassociates.com

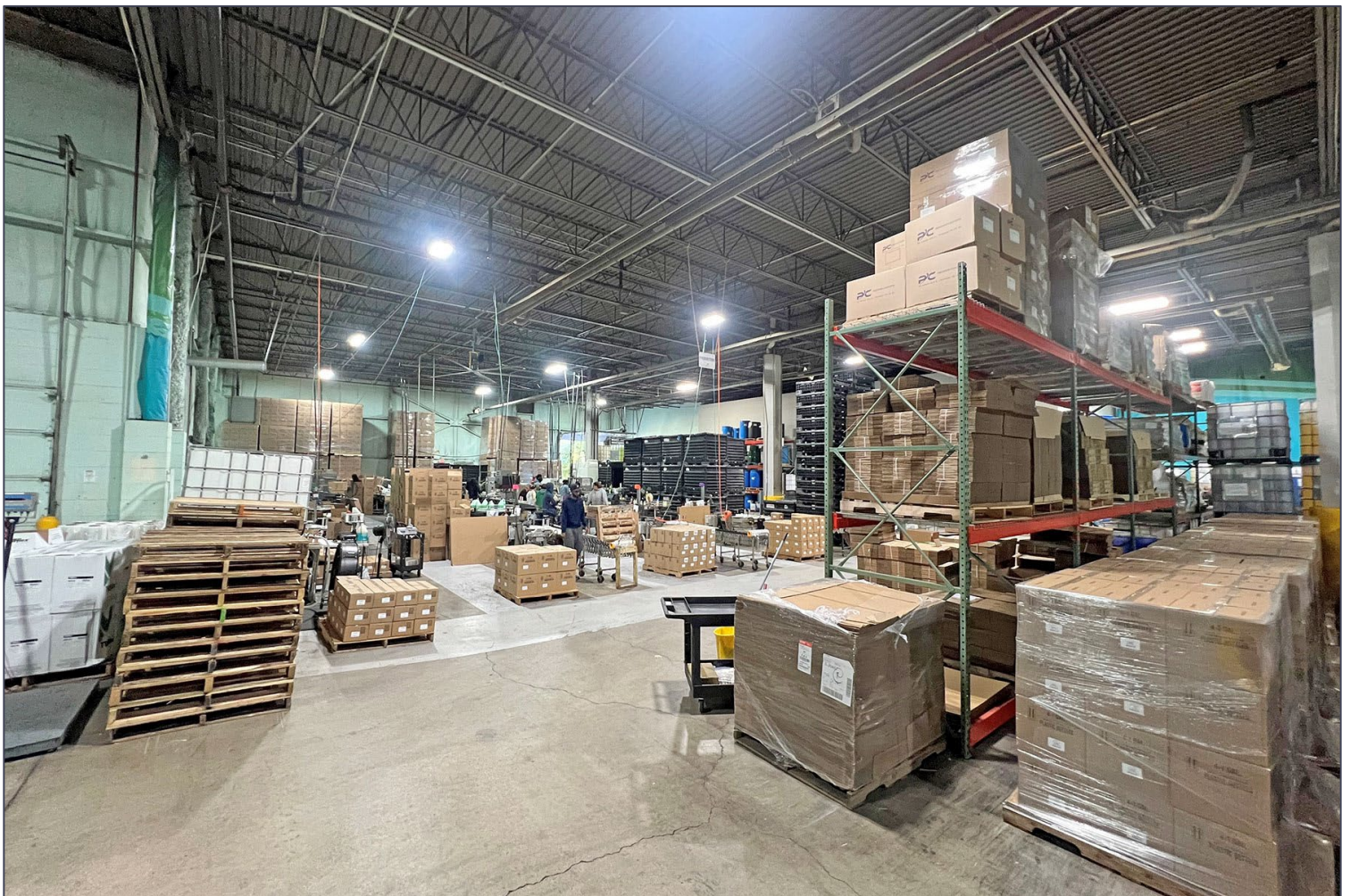
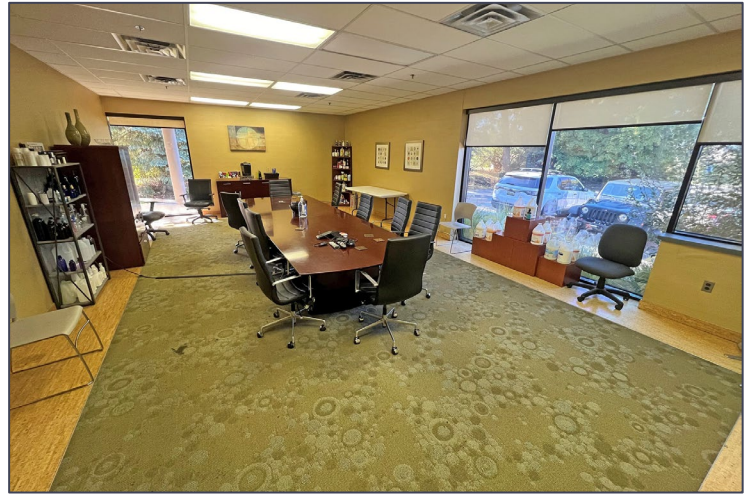
SIGNATURE ASSOCIATES
One Towne Square, Suite 1200
Southfield, MI 48076
www.signatureassociates.com

4520 Glenmeade Lane – Auburn Hills, Michigan

Industrial For Sale or Lease

22,584
Square Feet
AVAILABLE

Interior Photos



For more information, please contact:

PAUL HOGE
(248) 948 0103
paulhoge@signatureassociates.com

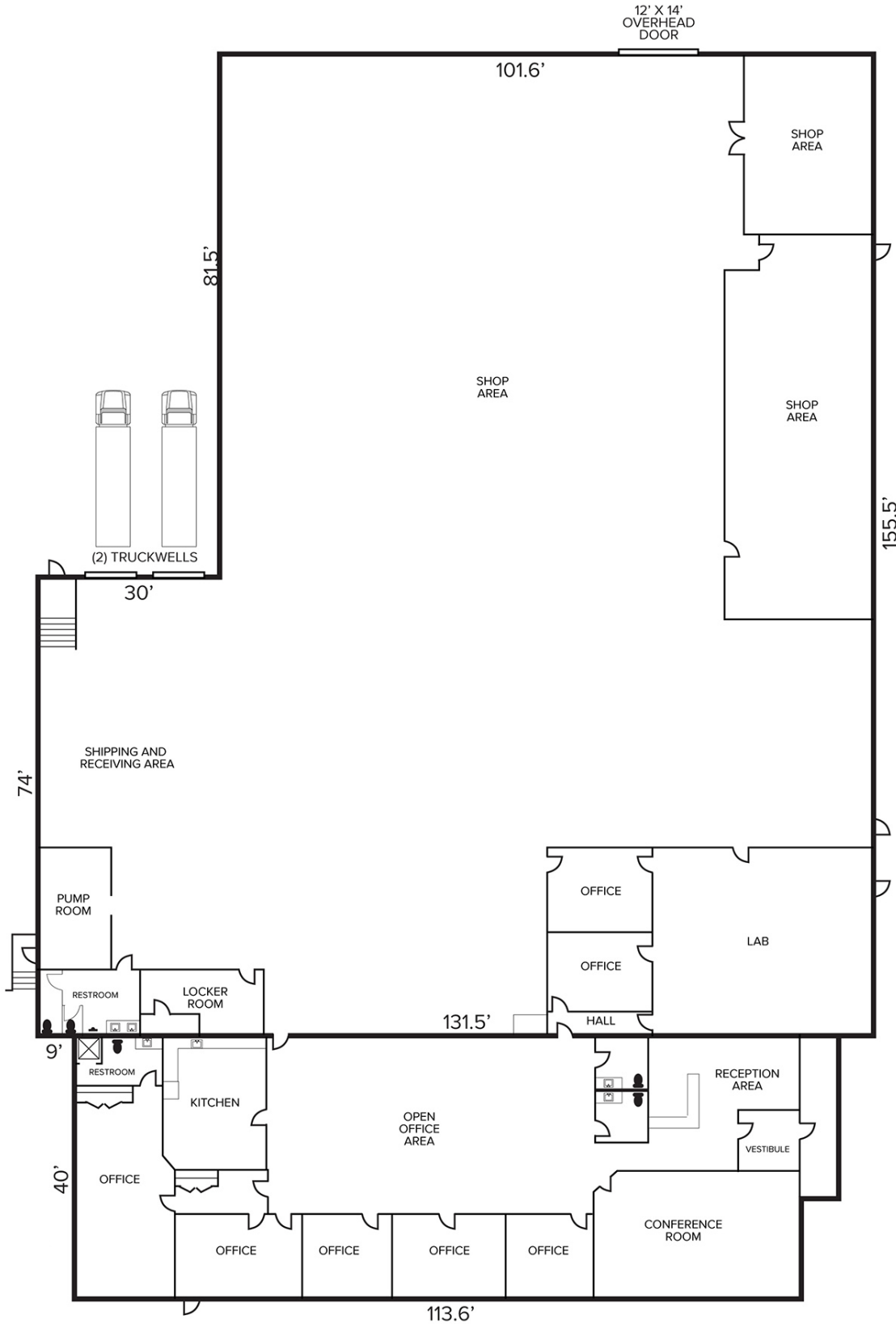
SIGNATURE ASSOCIATES
One Towne Square, Suite 1200
Southfield, MI 48076
www.signatureassociates.com

4520 Glenmeade Lane – Auburn Hills, Michigan

Industrial For Sale or Lease

22,584
Square Feet
AVAILABLE

Floor Plan



For more information, please contact:

PAUL HOGE
(248) 948 0103
paulhoge@signatureassociates.com

SIGNATURE ASSOCIATES
One Towne Square, Suite 1200
Southfield, MI 48076
www.signatureassociates.com

Information is subject to verification and no liability for errors or omissions is assumed. Price is subject to change and listing withdrawal.

4520 Glenmeade Lane – Auburn Hills, Michigan

Industrial For Sale or Lease

22,584
Square Feet
AVAILABLE

Aerial



For more information, please contact:

PAUL HOGE
(248) 948 0103
paulhoge@signatureassociates.com

SIGNATURE ASSOCIATES
One Towne Square, Suite 1200
Southfield, MI 48076
www.signatureassociates.com