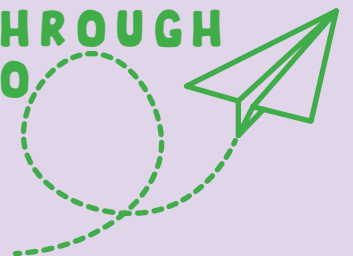


1650 EUCALYPTUS SCREATH-EMOLOTIC ST



SCAN WITH
PHONE FOR
FLYTHROUGH
VIDEO





BUILDING AMENITIES



DESIGN CENTERED

High-quality design is paramount at 1650 Euclid St, a 67,000 square foot creative office building built to the highest standards. Featuring steel windows, a concrete structure, airy and bright interiors, as well as landscaped areas and a rooftop deck, this design commitment not only enhances aesthetics but also promotes productivity and collaboration, making it an ideal choice for businesses seeking an inspiring and efficient workspace.



ACCESSIBLE + ON-SITE PARKING

1650 Euclid St is designed for convenience, offering valet services and over 120 secure underground parking spaces. Eco-friendly commuters benefit from bike parking, while the nearby 17th St/ Santa Monica College Metro E Line station ensures easy access for public transit users. This focus on accessibility ensures a hassle-free experience for all visitors and occupants.



LANDSCAPED COURTYARD

Landscape by James Corner Field Operations

Upon entering the courtyard at 1650 Euclid St, you'll be enveloped by abundant greenery, crafting a serene and welcoming ambiance. Meticulously crafted seating areas dot the space, offering snug nooks to bask in and savor the surrounding natural splendor. This delightful oasis seamlessly harmonizes nature and artistic elements, forming a serene retreat from the urban commotion. Whether you seek a tranquil solo respite or wish to convene with colleagues, this courtyard serves as the perfect locale to decompress and immerse yourself in its tranquil ambiance.



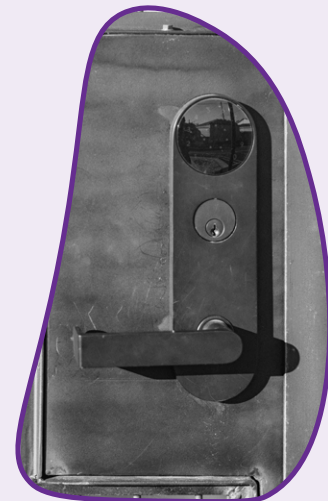
HIGH-QUALITY CONSTRUCTION & FINISHES

Located at 1650 Euclid St, the building showcases premium materials and finishes, including custom concrete siding and operable windows that blend indoor and outdoor spaces. Inside, marble countertops, walnut cabinetry, and high-end appliances create a luxurious kitchen experience. High-quality lighting throughout enhances the sophisticated ambiance, redefining modern luxury and craftsmanship.



PANORAMIC ROOF DECK

The rooftop amenity deck at 1650 Euclid St stands as a pinnacle feature, providing an elevated experience that truly distinguishes the building. Upon stepping onto this rooftop oasis, one is met with a breathtaking vista that stretches across the Santa Monica Mountains, with the distant Pacific Ocean completing the magnificent panorama. These unhindered views instill a feeling of vastness, serving as a captivating backdrop for any gathering or moment.



SECURE SMART ENTRY SYSTEMS

The OpenPath™ Smart Security Entry System at 1650 Euclid St offers advanced, touchless access, prioritizing both safety and convenience. By eliminating the need for physical keys or keycards, it provides a seamless and hygienic entry experience, especially valuable in a post-pandemic world.

11-foot bronze sculpture

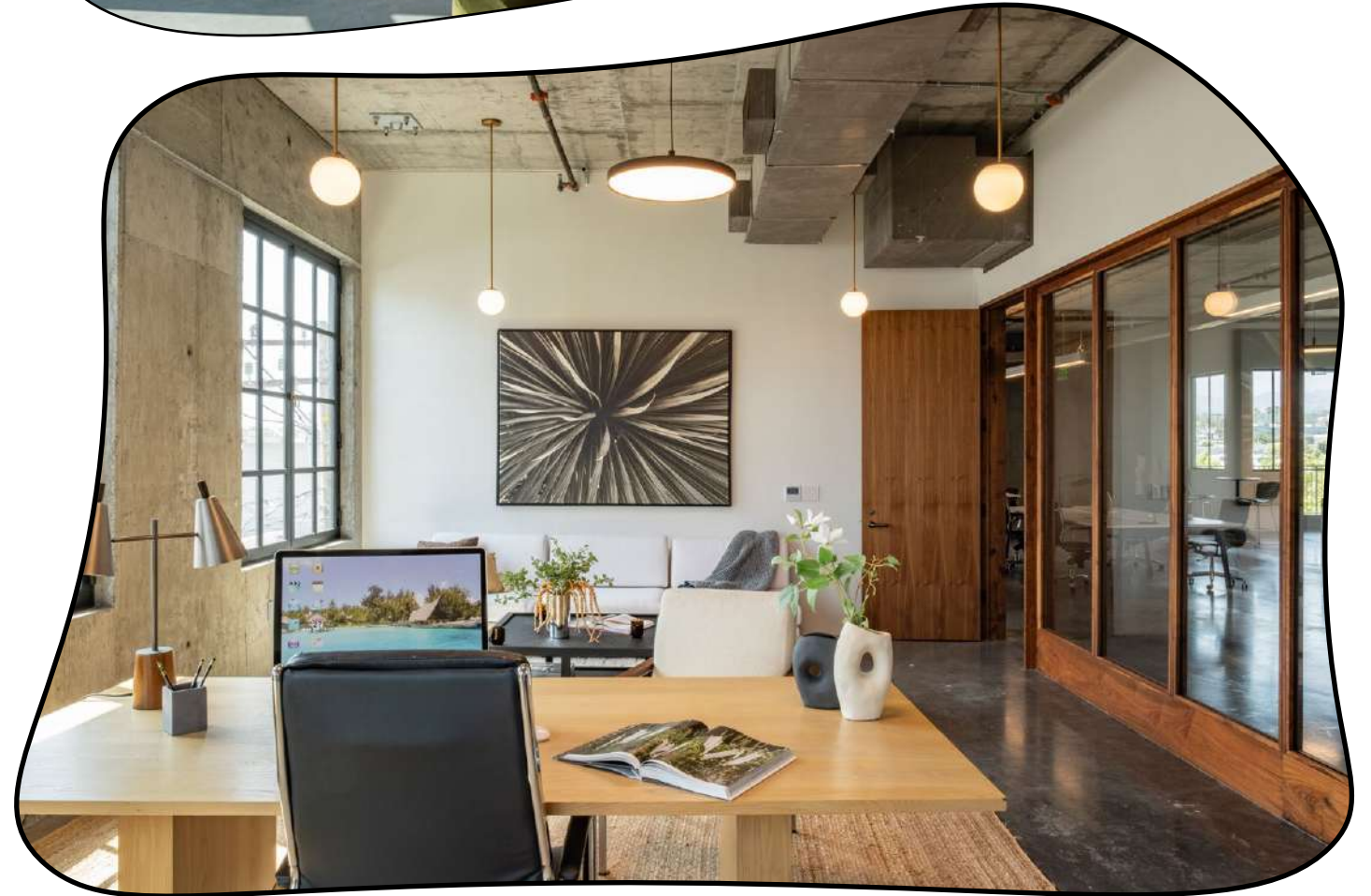
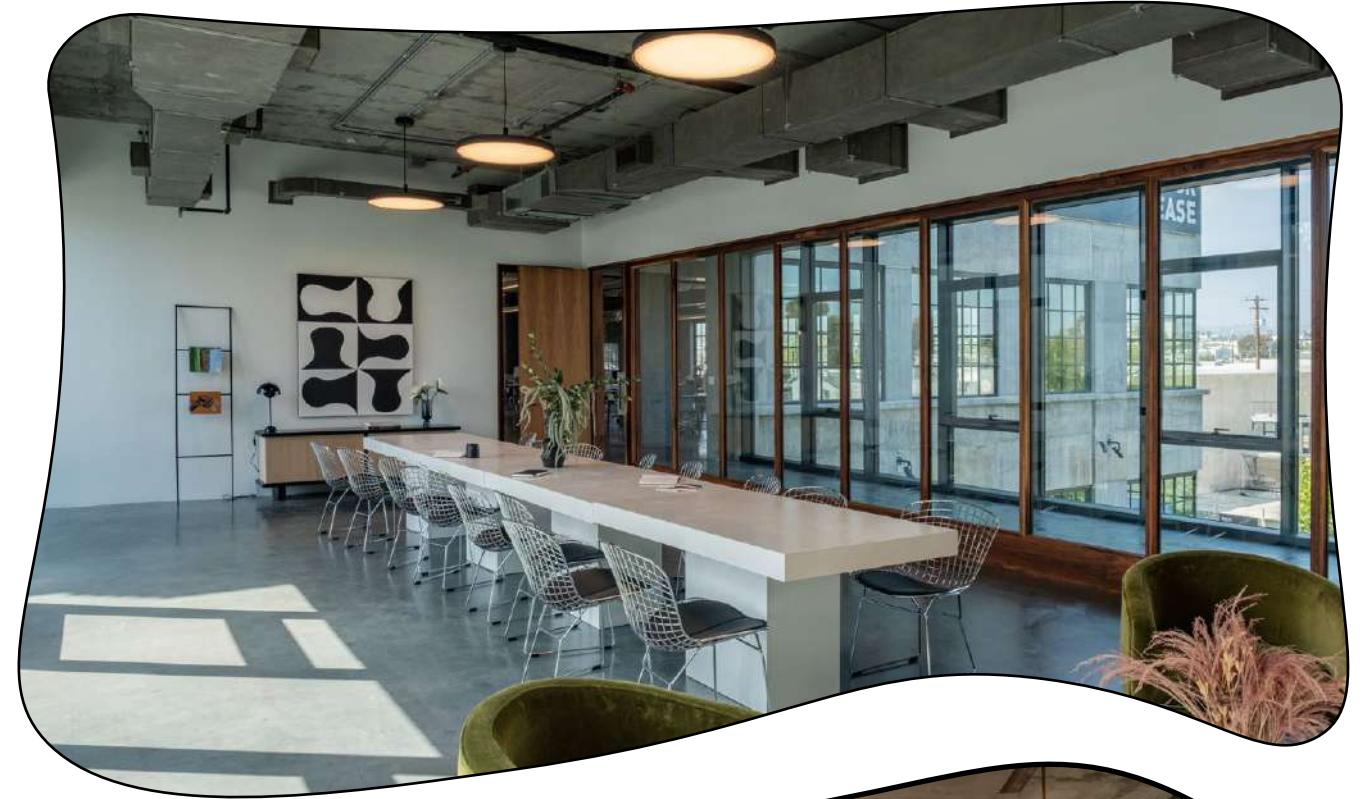


ART

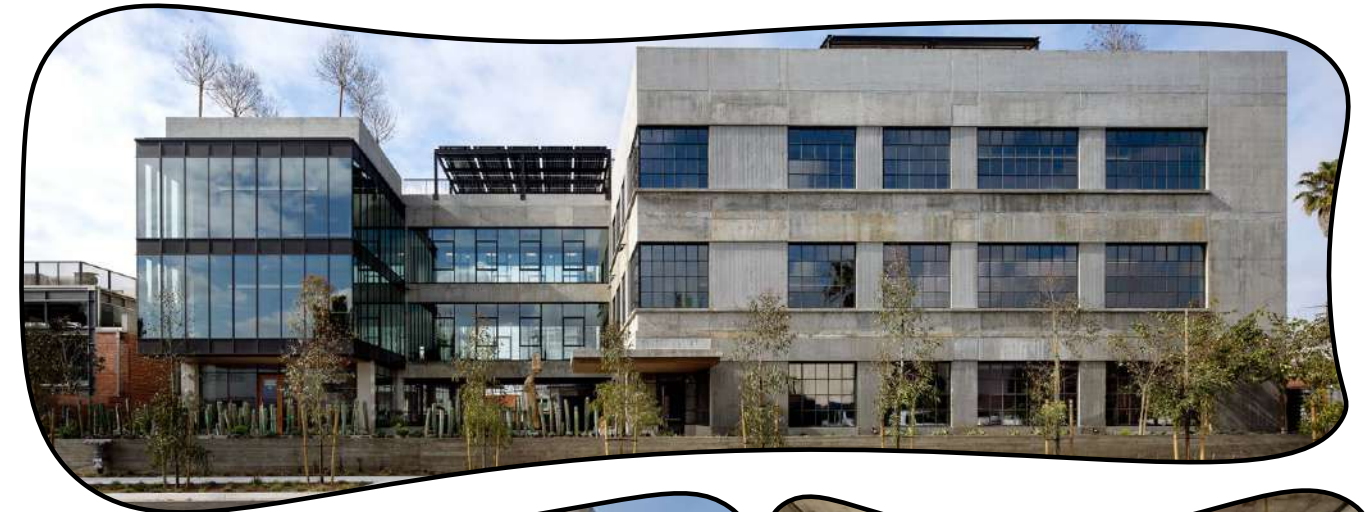
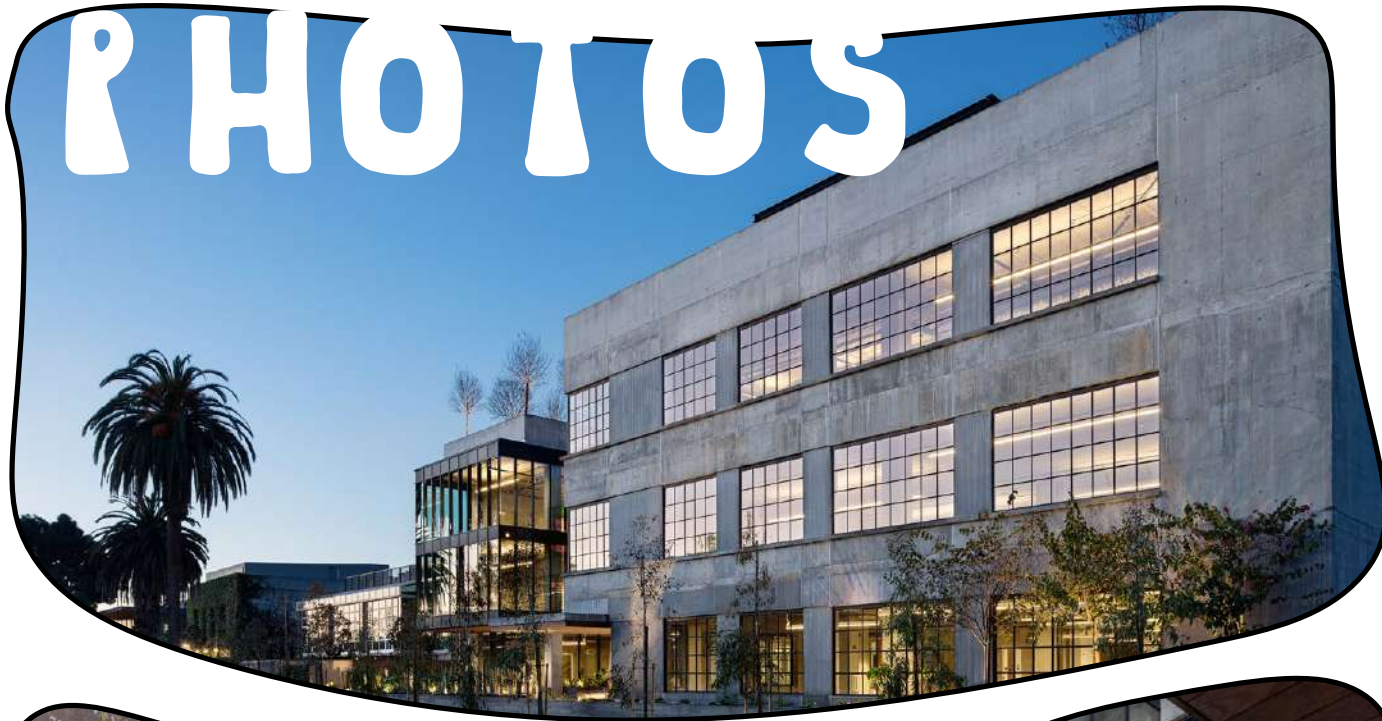
The sculpture garden at 1650 Euclid St, nestled within the courtyard of the office space, is a captivating blend of artistic expression and urban elegance. Among its notable features are two remarkable sculptures that command attention. The first is a towering 20-foot street lamp designed by the Haas Brothers, casting a warm and inviting glow over the space. It stands as a testament to the intersection of functional design and artistic innovation. The second sculpture, created by Alma Allen, takes on an entirely different form - an organic, 11-foot polished bronze masterpiece. Its fluid lines and tactile surface invite viewers to engage with its graceful contours. Together, these sculptures transform the courtyard into a dynamic and inspiring oasis, where art and architecture harmoniously coexist.



PHOTOS



PHOTOS



DETAILS

TOTAL AREA

±51,110 RSF
(Divisible)

DELIVERY

Immediate

PARKING

2 per 1,000 RSF on-site
Valet attendant

TERM

3-10 Years

LEASE RATE

\$5.45/SF per Mo. NNN

CONTACT

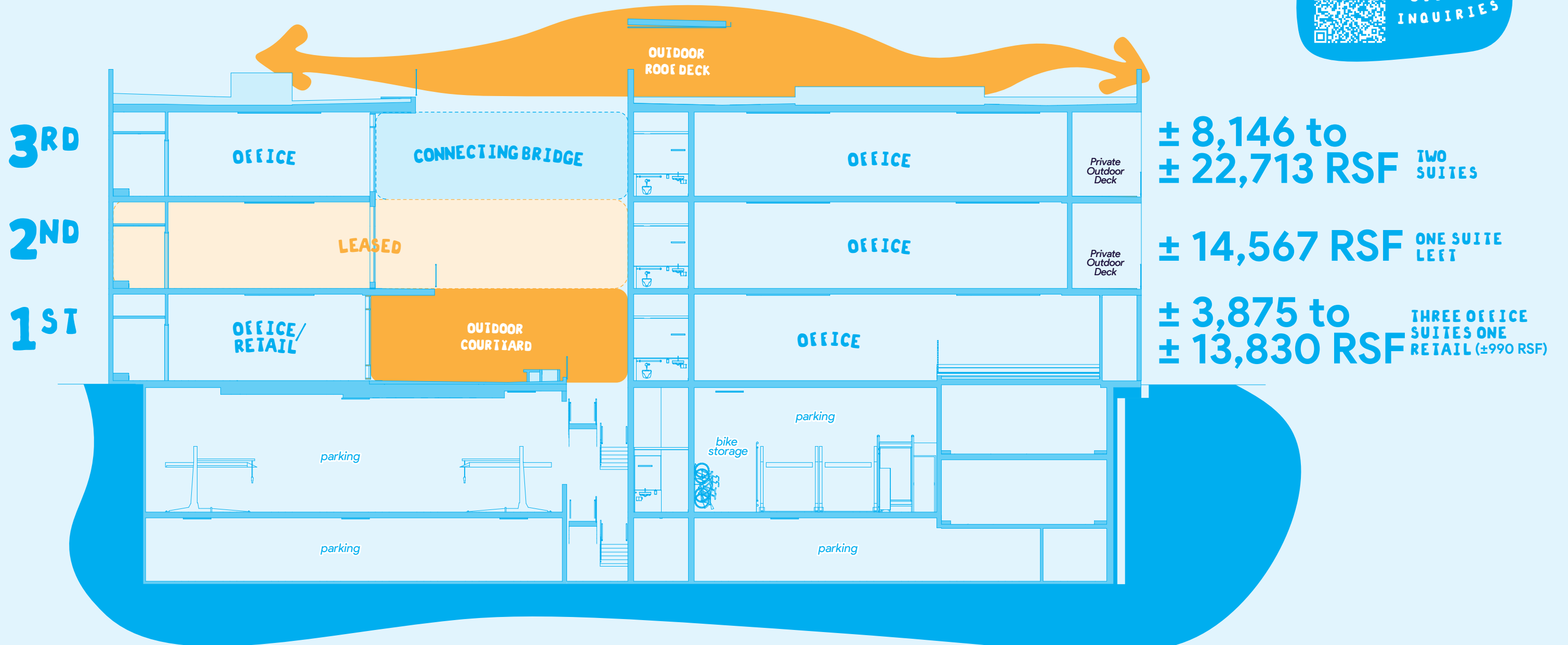
industrypartners.com
310 395 5151
CA BRE No. 01900833

Scott Rigsby
sr@industrypartners.com
CA BRE No. 01252835

Rich Maloof
rm@industrypartners.com
CA BRE No. 02009527



OFFICE INQUIRIES



DESIGN OVERVIEW



Breland—Harper

The architectural design of 1650 Euclid St blends modern elegance with eco-friendly principles, crafted by Breland—Harper Architects. The use of steel and concrete minimizes interior columns while maximizing natural light. Operable steel windows and a central landscaped courtyard enhance ventilation and connect the building to its surroundings. A rooftop amenity deck offers panoramic views of Santa Monica. This design exemplifies sustainability, sophistication, and attention to detail, creating a welcoming atmosphere.



James Corner Field Ops

The landscaping at 1650 Euclid St, designed by James Corner Field Ops, seamlessly blends natural beauty with aesthetic appeal. The central courtyard, featuring lush greenery and art, offers a tranquil retreat within the bustling city. The rooftop deck provides stunning panoramic views of Santa Monica and the Pacific Ocean, perfect for gatherings or quiet reflection. James Corner Field Ops' design invites tenants to connect with nature and find serenity in their surroundings.



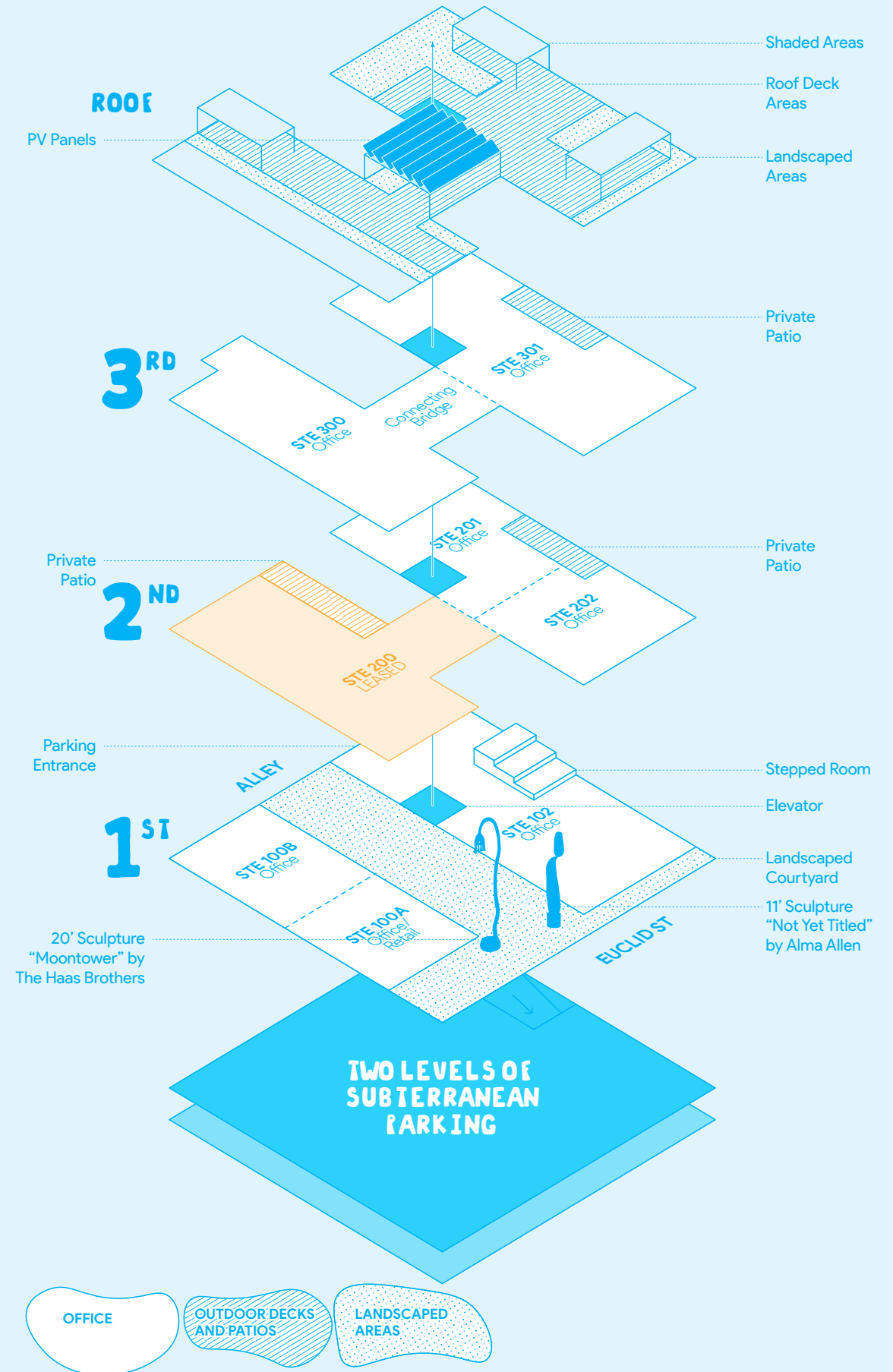
The Haas Brothers

The courtyard at 1650 Euclid St features two stunning sculptures that enhance its beauty. "Not Yet Titled" by Alma Allen, an 11-foot-tall bronze piece resembling a cactus, reflects the artist's connection to nature, with its polished surface creating a dynamic play of light and shadow. The Haas Brothers' "Moontower," a 20-foot bronze street light, adds both function and elegance, casting a warm glow over the space. Together, these sculptures blend art and nature, creating a captivating atmosphere.

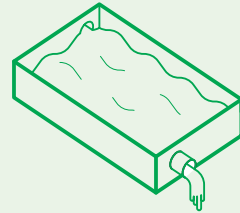


Configurable

1650 Euclid St offers exceptional flexibility with spaces ranging from 4,436 to 24,600 square feet, allowing for a variety of office layouts. Tenants can create open areas, individual offices, or a combination, tailoring their workspace to fit their needs. This adaptability makes it an ideal choice for businesses seeking a space that can evolve as they grow.

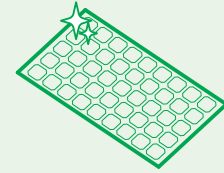


SUSTAINABILITY



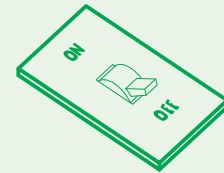
Rainwater Collection

The building features a 12,000-gallon rainwater harvesting system that captures and stores rainwater for sustainable use. The collected water is treated and filtered, then used for irrigation and toilet flushing, reducing reliance on municipal water supplies and contributing to resource conservation.



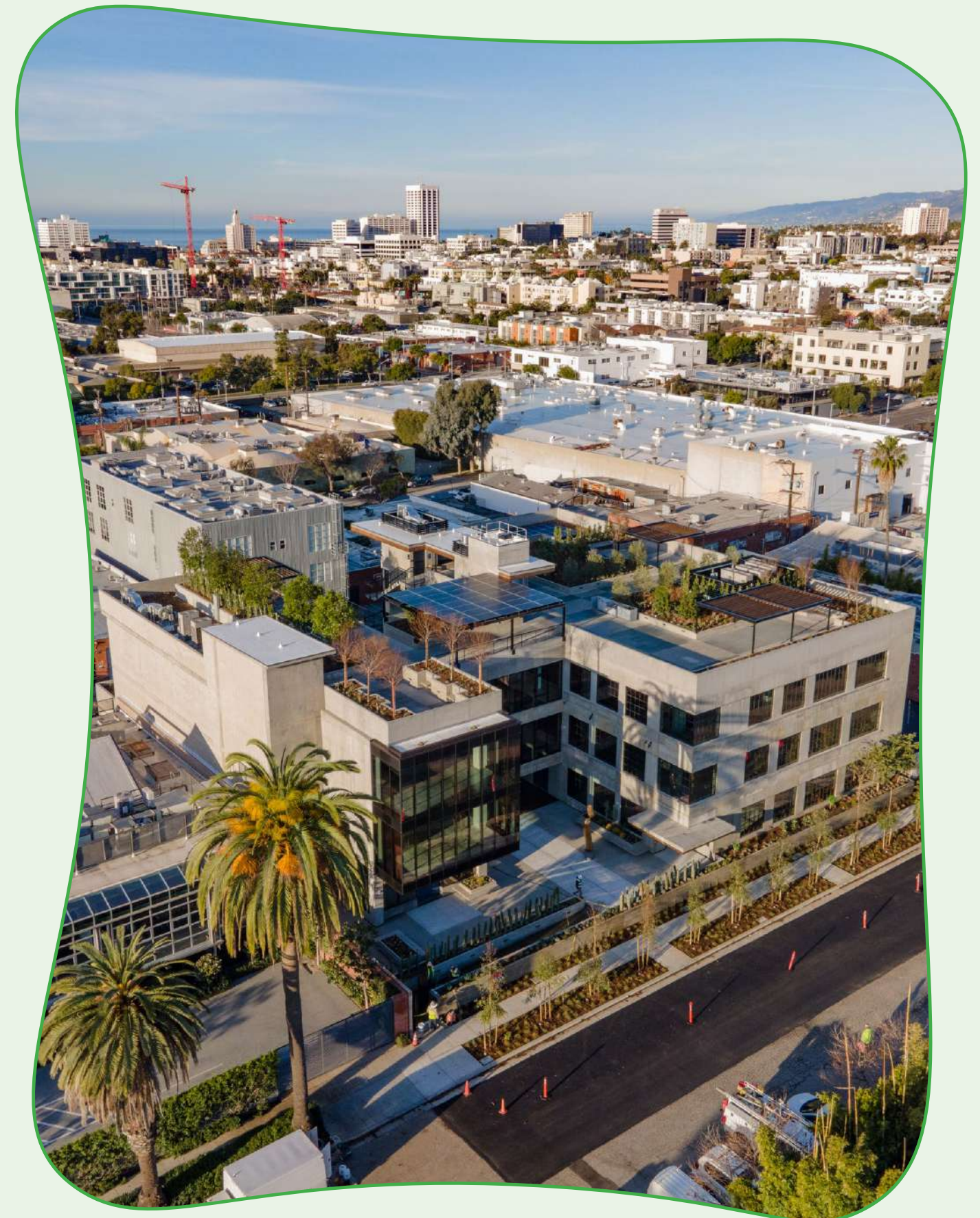
Solar Power

At 1650 Euclid St, a rooftop solar panel system generates approximately 26,000 kilowatt-hours (kWh) annually, significantly reducing the building's reliance on traditional energy sources. This system reflects the property's commitment to sustainability and energy efficiency through clean, renewable energy.



Energy Efficient

1650 Euclid St exemplifies energy efficiency and complies fully with Title 24 standards. It features energy-saving elements like motion-sensor lighting, high-efficiency HVAC systems, superior insulation, double-glazed windows, and smart shading for optimal temperature control. The rooftop solar panel system further reduces reliance on conventional energy. Together, these features enhance comfort and sustainability, reflecting the building's commitment to a greener future.



PANORAMIC VIEWS



Northeast

The northwest views from the rooftop of 1650 Euclid offer a breathtaking panorama of the majestic Santa Monica Mountains. With their rugged peaks and lush greenery, these mountains provide a stunning natural backdrop, creating an awe-inspiring and tranquil vista that captivates the eye and enhances the rooftop experience.



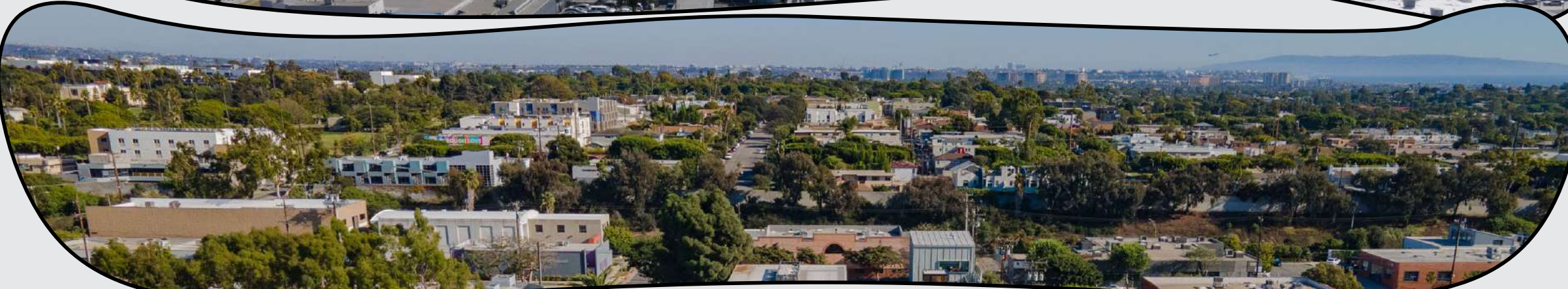
Northwest

The northwest views from the rooftop of 1650 Euclid offer a breathtaking panorama of the majestic Santa Monica Mountains. With their rugged peaks and lush greenery, these mountains provide a stunning natural backdrop, creating an awe-inspiring and tranquil vista that captivates the eye and enhances the rooftop experience.



Southwest

To the southwest, the rooftop of 1650 Euclid offers an expansive view of the majestic Pacific Ocean. This breathtaking vista showcases the endless horizon where the sea meets the sky, providing a serene and tranquil backdrop that invites contemplation and relaxation. The ocean view is a captivating feature that adds a



Southeast

To the southeast, from the rooftop of 1650 Euclid, you can enjoy a sweeping view that spans the picturesque Santa Monica neighborhoods, extends to the bustling LAX area, and reaches as far as the South Bay region, with the tranquil beauty of Catalina Island gracing the distant horizon. This expansive vista offers a captivating perspective of the diverse cityscape and the serene allure of Catalina Island, providing a unique blend of urban energy and natural beauty.

TOP 10 WITHIN 10



3 MIN DRIVE

Bodega Wine Bar: A relaxed and intimate wine bar offering an extensive selection of wines by the glass or bottle, along with a variety of small plates. Perfect for casual meetups or date nights, it exudes a cozy, welcoming atmosphere ideal for wine lovers.



3 MIN DRIVE

Santa Monica Brew Works: This craft brewery is known for its wide array of locally brewed beers, from IPAs to lagers. With a lively atmosphere and a commitment to quality, it's a favorite for beer enthusiasts looking to enjoy fresh, flavorful brews.



4 MIN DRIVE

GoodBoy Bob: A stylish café and coffee shop with a reputation for exceptional, carefully sourced coffee. Alongside their artisanal brews, they offer gourmet sandwiches, salads, and pastries, making it a great spot for breakfast, lunch, or a quick coffee break.



4 MIN DRIVE

Rustic Canyon: A highly acclaimed, farm-to-table restaurant that celebrates seasonal ingredients with innovative, locally sourced dishes. Known for its refined, yet approachable menu, Rustic Canyon offers an exceptional dining experience in a warm and welcoming environment.



5 MIN DRIVE

Cassia: A vibrant and trendy restaurant blending Southeast Asian flavors with French culinary techniques. Its bold and unique menu, featuring seafood, noodles, and grilled dishes, offers a one-of-a-kind dining experience in a lively, upscale atmosphere.



6 MIN DRIVE

Colapasta: A charming Italian spot specializing in fresh, house-made pasta dishes. The menu is simple yet authentic, with an emphasis on quality ingredients and traditional Italian cooking methods, offering a taste of Italy in a casual setting.



4 MIN WALK

Tacos Por Favor: A beloved local joint serving authentic Mexican street food, known for its delicious tacos, burritos, and quesadillas. With a menu full of flavorful options, it's a go-to spot for a quick, satisfying, and affordable meal.



5 MIN WALK

Buffalo Club: A chic, upscale restaurant and bar offering a sophisticated menu of modern American cuisine alongside expertly crafted cocktails. With its dim lighting and plush decor, it's an ideal spot for a special night out or celebratory dinner.



10 MIN WALK

Chestnut Club: A stylish cocktail bar with a vintage vibe, offering expertly crafted drinks made with high-quality spirits and fresh ingredients. Its inviting ambiance and impressive cocktail list make it a great destination for a night out with friends or a quiet evening with a great drink.



10 MIN WALK

Santa Monica Co-Op: A community-focused grocery store offering a wide selection of organic, locally sourced produce and products. Beyond groceries, it also features a deli with fresh, healthy meals, perfect for a quick and wholesome lunch or snack.

NEARBY AMENITIES

- ▶ 1 Tacos por Favor
- ▶ 2 Buffalo Club
- ▶ 3 Santa Monica Co-Op
- ▶ 4 Coffee Commissary
- ▶ 5 The Chestnut Club
- ▶ 6 Pono Burger
- ▶ 7 Bay Cities
- ▶ 8 Bodega Wine
- ▶ 9 Santa Monica Brew Works
- ▶ 10 Cassia
- ▶ 11 Crimson
- ▶ 12 Wexler's Deli
- ▶ 13 Tar & Roses
- ▶ 14 Philz Coffee
- ▶ 15 Trader Joe's
- ▶ 16 Target
- ▶ 17 Colapasta
- ▶ 18 Sidecar Doughnuts
- ▶ 19 Rustic Canyon
- ▶ 20 Melisse
- ▶ 21 Ulta
- ▶ 22 Santa Monica Place
 - Nordstrom
 - Tiffany & Co
 - Louis Vuitton
 - True Food Kitchen
 - The Curious Palate
 - Nike
 - Top Shop
 - AllSaints
 - The Gourmandaise School
 - Cayton's Children Museum
- ▶ 23 Third St Promenade/4th St
 - Tender Greens
 - Burger Lounge
 - California Chicken Cafe
 - Cafe Ugo
 - Lemonade
 - Sugarfish
 - Silverlake Ramen
 - Sweetgreen
 - Hillstone
 - Wally's
 - Bar Chloe
 - Lanea
 - Cult Coffee
 - AMC
 - Misfit Bar
 - Mercado



ACCESSIBLE

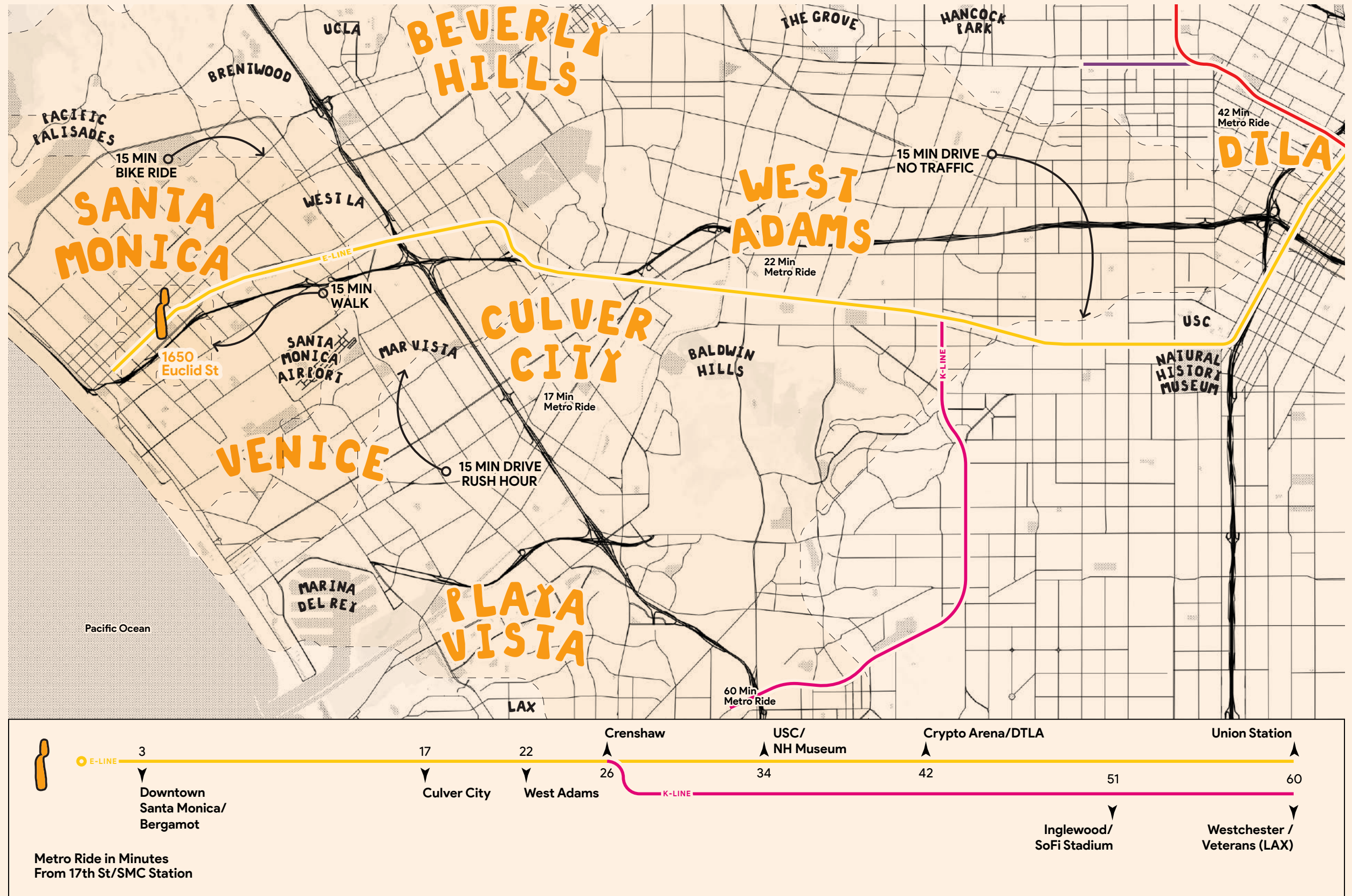
Santa Monica boasts excellent accessibility, ensuring ease of travel for both residents and visitors. Its strategic location near major freeways simplifies transportation, whether arriving from within the city or beyond, guaranteeing a hassle-free commute.

Santa Monica's exceptional accessibility is underscored by its strategic location near major freeways, particularly the vital 405 Fwy that connects the San Fernando Valley to the north and the South Bay to the south. This freeway network ensures a seamless and efficient commute for residents and visitors alike, whether they are traveling within the city or arriving from more distant destinations.

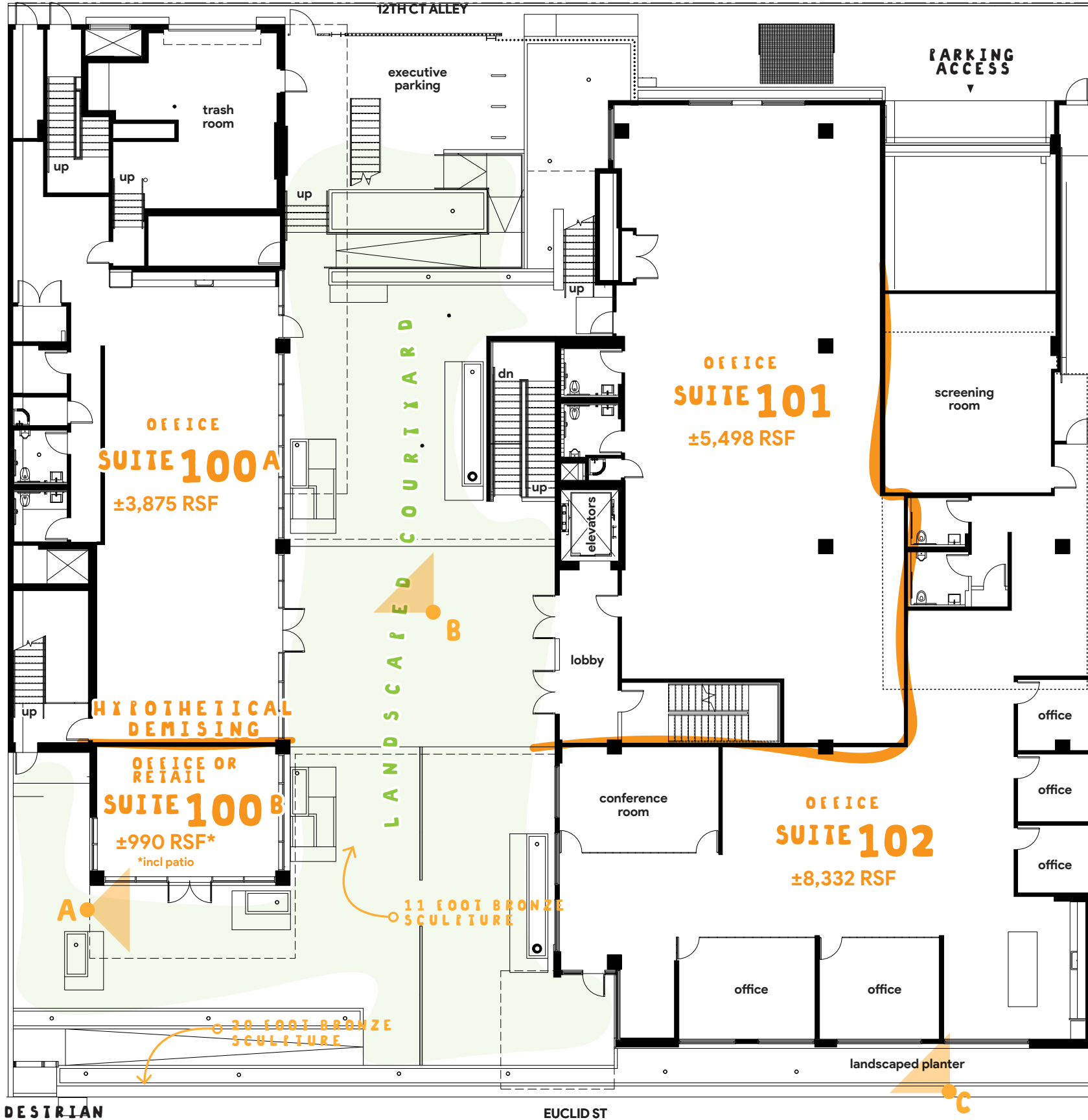
Moreover, Santa Monica enjoys a network of public transit options, including the Metro's E-Line, a crucial rail link connecting the East and West regions. The E-Line provides easy access to various transportation modes, encompassing buses and airport shuttles. Notably, the 17th St/SMC Station on the E-Line serves as a convenient gateway to explore Santa Monica and its neighboring areas, such as Downtown Santa Monica (just 3 minutes away), Culver City (17 min), and Downtown Los Angeles (42 min), all without the need for line transfers.

In a world increasingly concerned with issues like traffic congestion, environmental impact, and individual well-being, many employees are actively seeking alternative commuting solutions. As businesses adapt to evolving work dynamics, the provision of convenient public transportation is pivotal in attracting and retaining top talent. Embracing such forward-thinking initiatives not only demonstrates a commitment to employee welfare but also underscores a dedication to environmental stewardship.

Santa Monica's strategic proximity to Los Angeles International Airport (LAX), one of the nation's busiest and most renowned airports, makes it a truly globally connected destination. This dynamic blend of accessible roadways, global connectivity, and sustainable transportation initiatives solidifies Santa Monica's position as a well-connected coastal enclave, offering boundless opportunities for adventure, convenience, and exploration.



1ST FLOOR



*Not to scale. Hypothetical test fit & demising plan

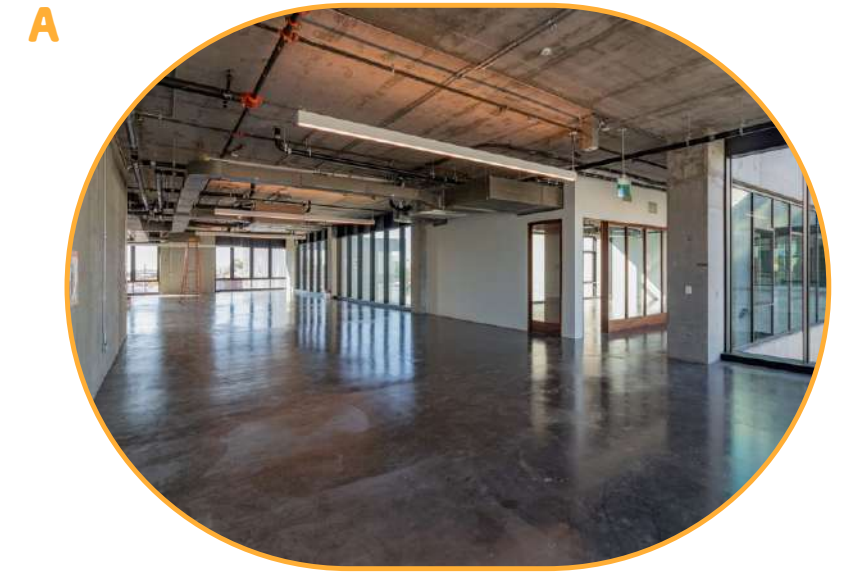
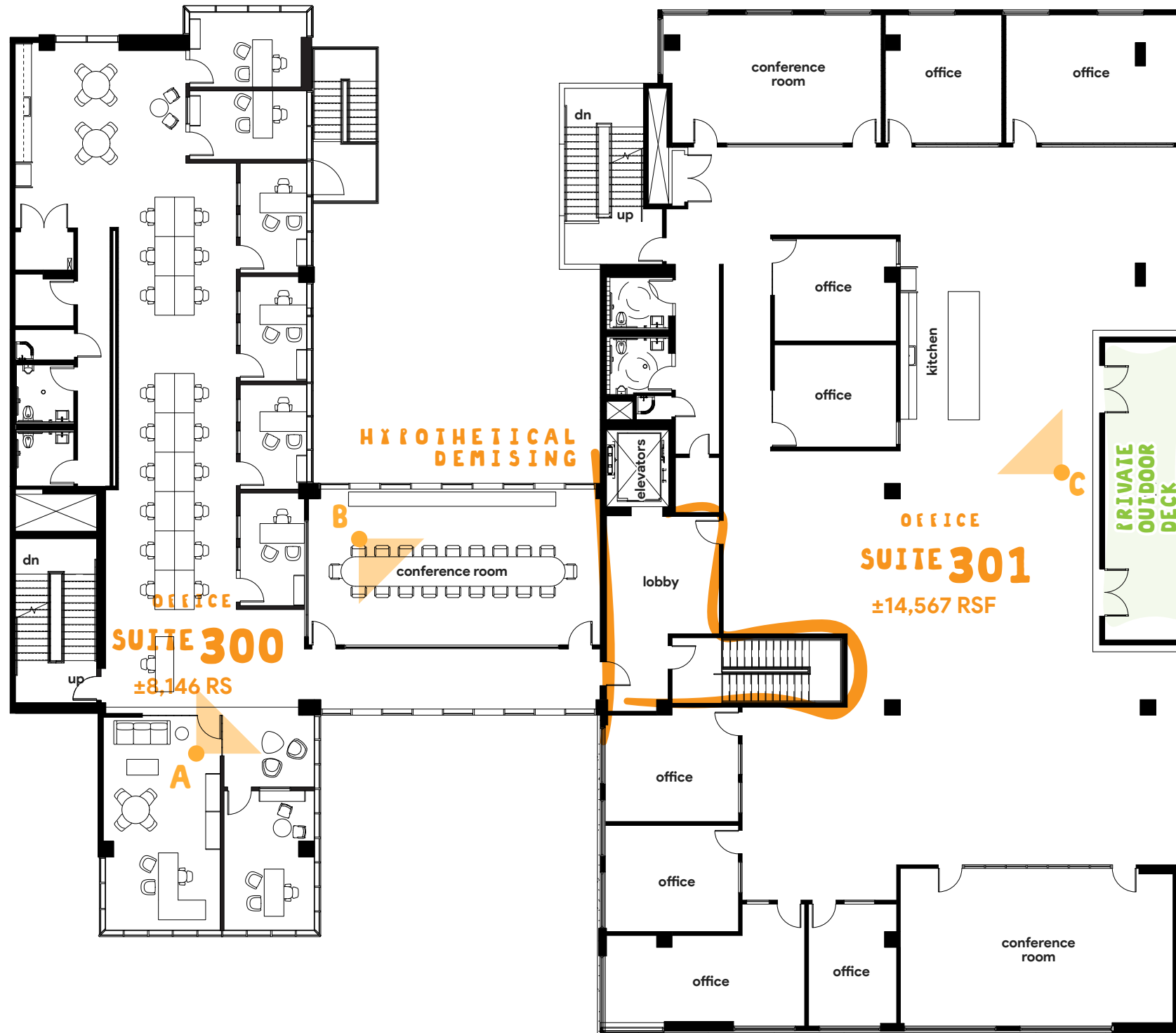
2ND FLOOR



*Not to scale. Hypothetical test fit & demising plan

3RD FLOOR

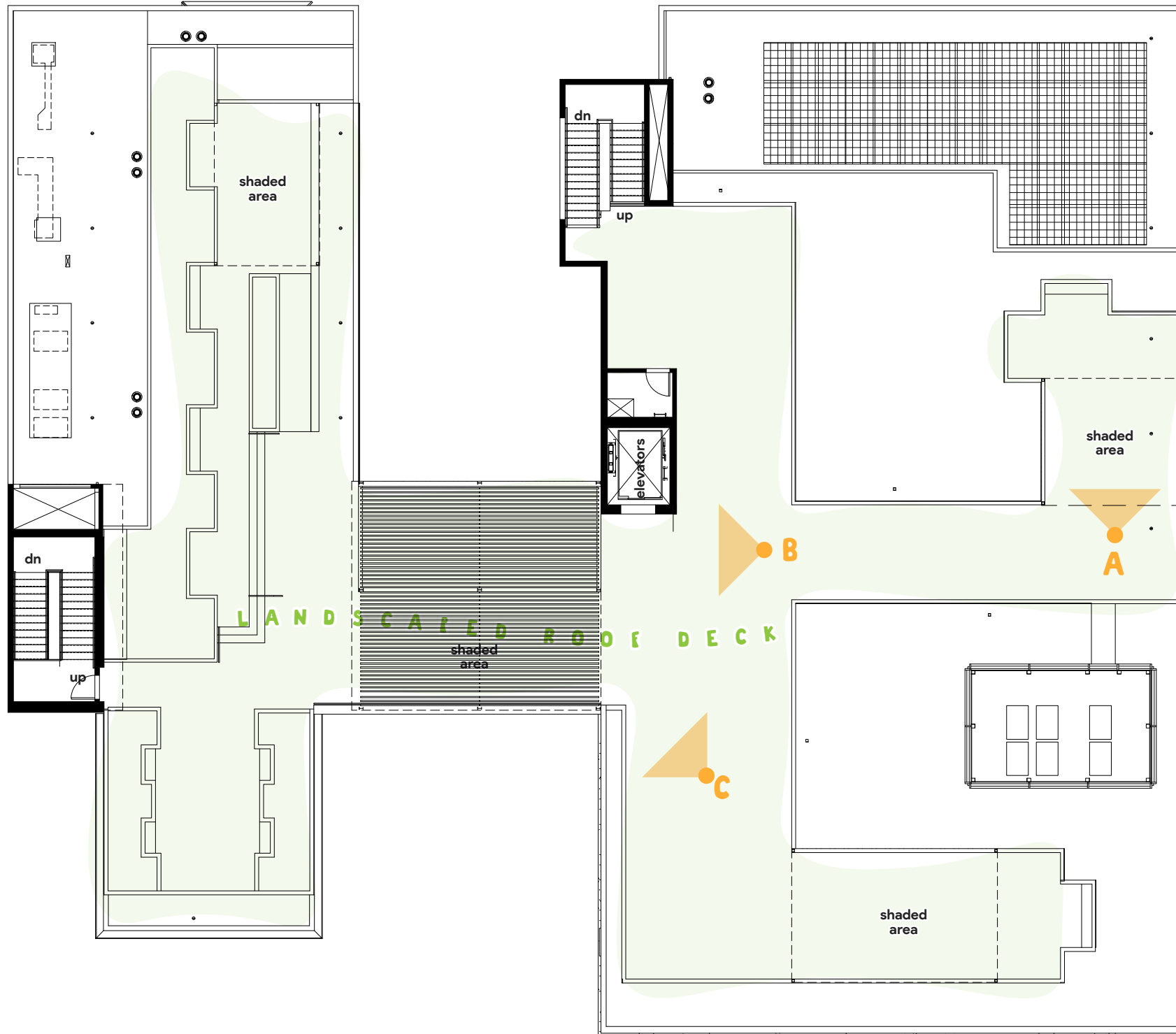
12TH CT ALLEY



*Not to scale. Hypothetical test fit & demising plan

ROOF DECK

12TH CT ALLEY

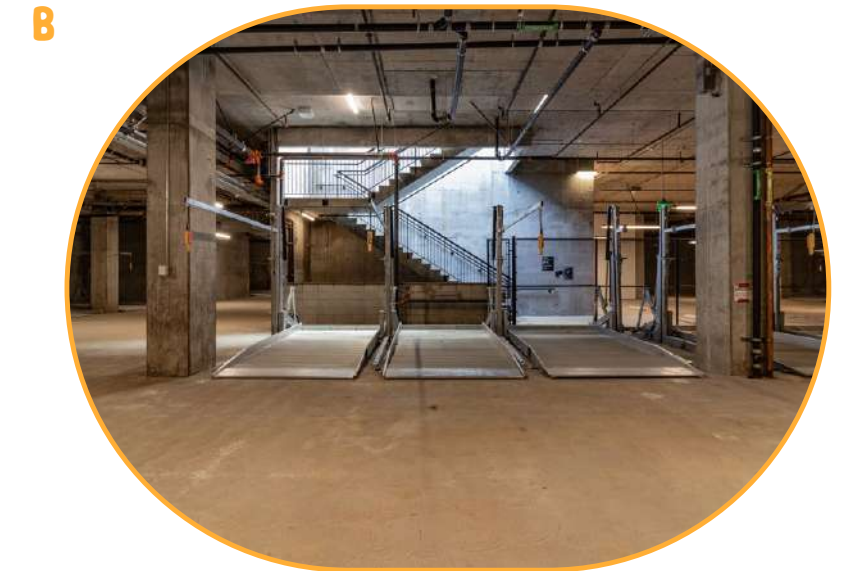
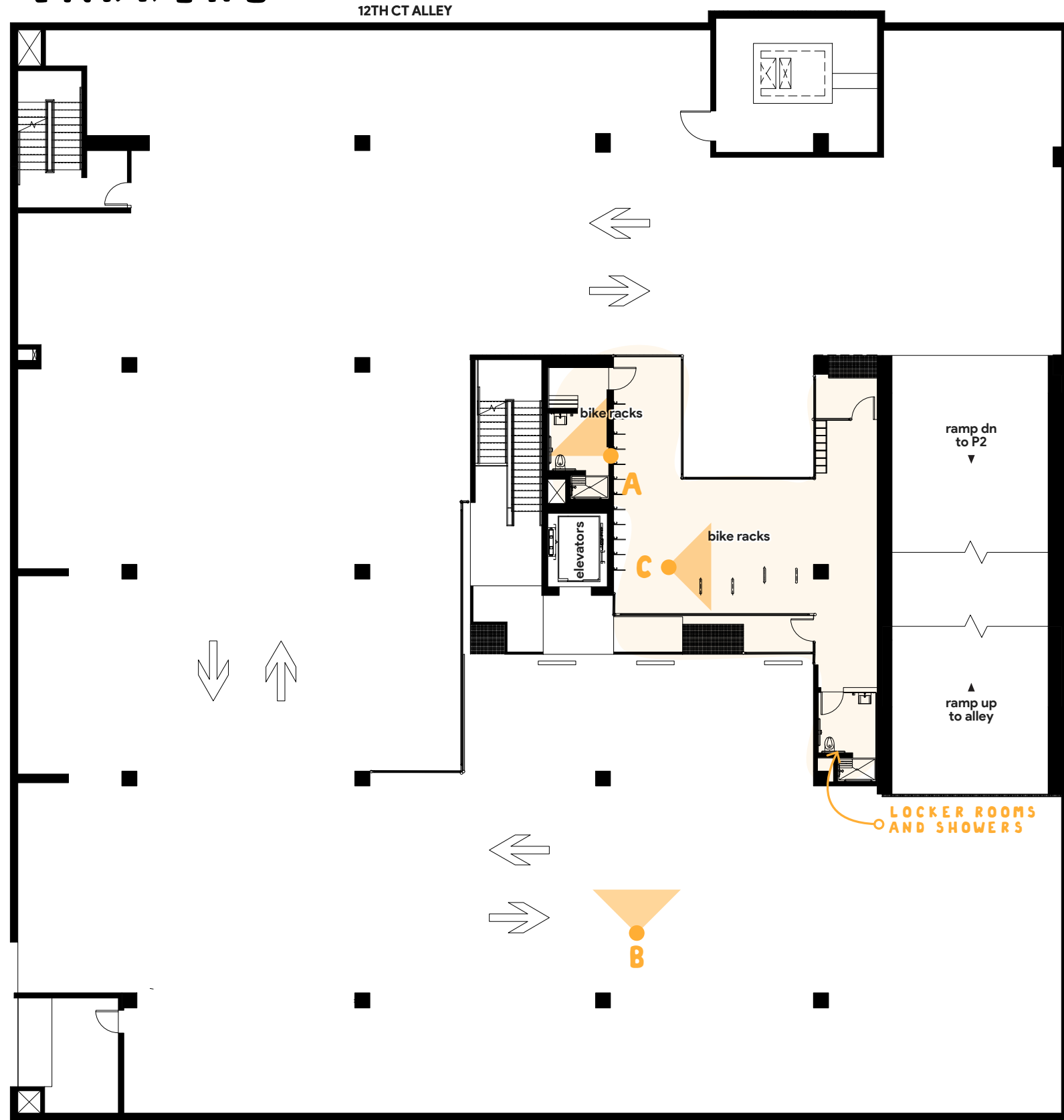


EUCLID ST



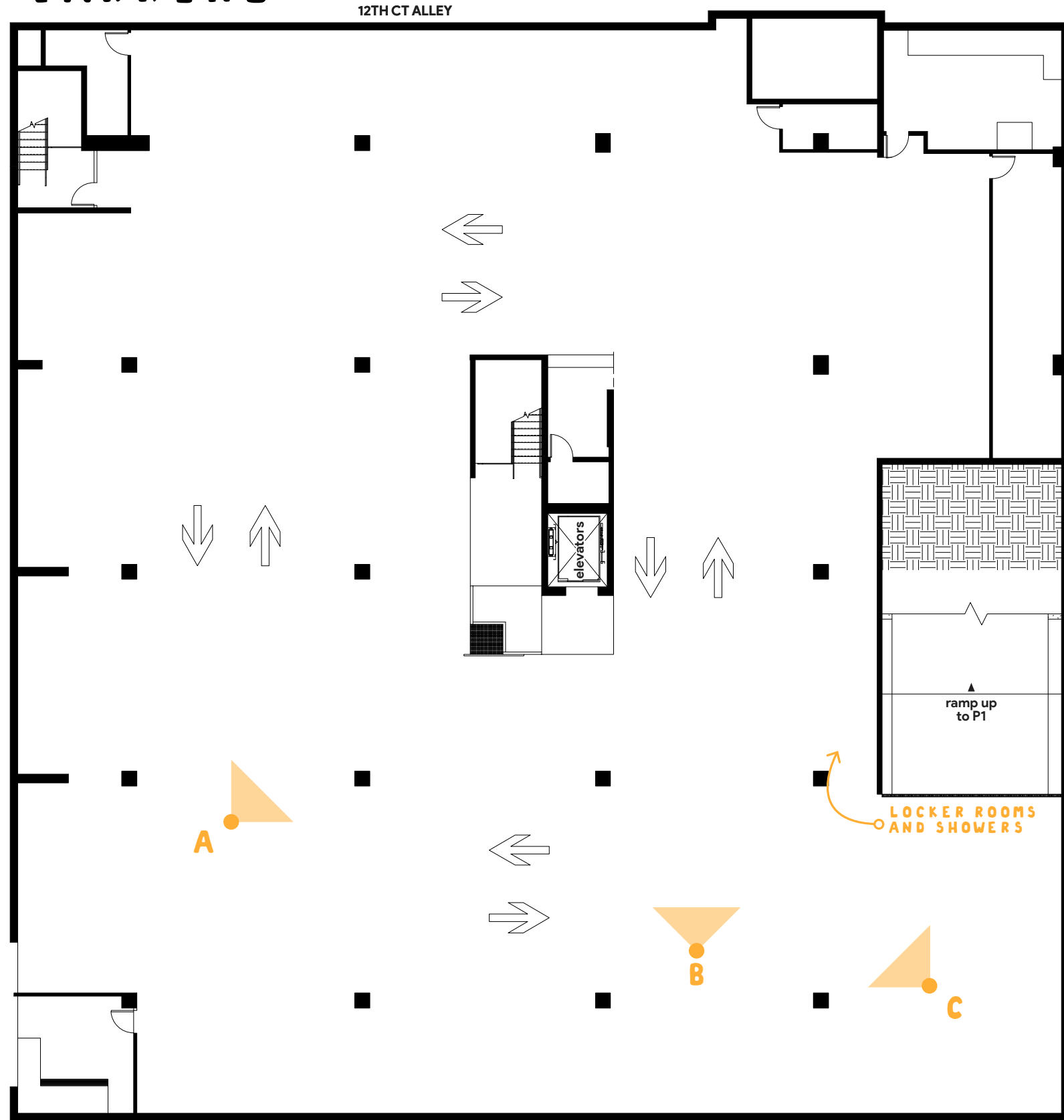
*Not to scale. Hypothetical test fit & demising plan

P1 PARKING



*Not to scale. Hypothetical test fit & demising plan

P2 PARKING



*Not to scale. Hypothetical test fit & demising plan

The sculpture garden and landscaped courtyard within 1650 Euclid St offer a serene fusion of art and nature. Two striking sculptures adorn the space, each embodying a unique artistic approach. “Moon Tower” by the Haas Brothers, a 20-foot bronze masterpiece, showcases modern innovation and intricate craftsmanship, while Alma Allen’s “Not Yet Titled,” pays homage to traditional artisanal methods. These sculptures, surrounded by lush greenery and thoughtfully designed landscaping by James Corner Field Ops, create a tranquil oasis that invites contemplation and celebrates the enduring beauty of art and nature.

‘MOON TOWER’

THE HAAS BROTHERS

“Moon Tower,” the brainchild of the visionary Haas Brothers, represents a tour de force in artistic fabrication. The creation of this monumental 20-foot bronze sculpture required an intricate and multi-step process, starting with the meticulous crafting of numerous molds to capture the sculpture’s every nuance.

One of the key innovations in its production was the utilization of vacuum mold technology systems, a cutting-edge method that allowed for the casting of thinner walls, enhancing the sculpture’s grace and visual intrigue. This innovation not only reduced the weight of the piece but also contributed to its ethereal, almost weightless appearance.

The assembly of “Moon Tower” was a feat of engineering and artistry. Much like assembling a colossal jigsaw puzzle, dozens of individually crafted components came together with utmost precision. This meticulous craftsmanship culminated in the creation of a sculpture that seamlessly marries form and function, illuminating the streets while leaving onlookers in awe of its complexity and celestial beauty. “Moon Tower” stands not only as a captivating work of art but also as a testament to the boundless possibilities when art and technology converge.



‘NOT YET TITLED’

ALMA ALLEN

Alma Allen’s “Not Yet Titled” is an exceptional 11-foot bronze sculpture that exudes a sense of timelessness and artistry. This remarkable piece was crafted in Mexico using traditional and artisanal methods, harking back to a bygone era of craftsmanship. The painstaking process of hand welding and polishing, rather than modern industrial techniques, imparts a unique character to the sculpture. Each imperfection, each brushstroke, becomes part of its narrative, infusing it with a rich and tactile quality that modern mass production cannot replicate.

Sitting proudly atop a base of locally sourced volcanic stone from the heart of Central Mexico, this sculpture forms a deep connection with its geographic origin. This choice of material reflects not only the artist’s commitment to sustainability but also underscores the synergy between art and nature.

The sculpture’s form is a testament to Allen’s affinity for organic shapes found in the natural world, particularly cacti. Its sinuous, undulating contours evoke the very essence of desert flora, as though it were a living, breathing organism. The bronze surface, with its polished luster, captures light in a way that highlights the sculpture’s fluidity and organic elegance.

“Not Yet Titled” stands as a striking embodiment of artistry, tradition, and reverence for nature. It invites viewers to explore the enduring beauty of handcrafted work, reminding us of the profound connection between human creativity and the organic world that inspires it. This sculpture is not just a piece of art; it’s a celebration of craftsmanship, culture, and the natural wonders that continue to inspire artists like Alma Allen.

ATTENTION TO DETAIL

Redcar's dedication to excellence goes beyond the physical components of their buildings; it encompasses the entire user experience. Their approach begins with a deep understanding of how modern businesses operate and the evolving needs of employees. This insight informs every stage of the development process, from conceptual design to final construction, ensuring that each project is uniquely tailored to promote both efficiency and well-being.

Their thoughtful design philosophy extends to the integration of flexible spaces that adapt to changing work patterns. Redcar recognizes that today's workforce requires a dynamic environment that supports a range of activities, from collaborative brainstorming sessions to individual, focused tasks. As a result, their office spaces are designed with versatility in mind, providing areas that encourage interaction as well as private spaces for quiet concentration.

In addition to functionality, Redcar prioritizes wellness in their designs. Natural light, air quality, and access to outdoor spaces are carefully considered to promote employee health and comfort. They often incorporate biophilic design elements, such as greenery and nature-inspired finishes, which have been shown to improve mental well-being and productivity. These elements are seamlessly woven into the overall aesthetic, creating workspaces that not only look beautiful but also feel refreshing and energizing.

Moreover, Redcar's attention to detail extends to the integration of public spaces, where communal areas and amenities are thoughtfully curated to foster a sense of community. Whether it's through the inclusion of on-site cafes, fitness centers, or rooftop gardens, Redcar creates environments where people can connect, unwind, and recharge.

Redcar's commitment to sustainability is another defining feature of their projects. They focus on using sustainable building materials, energy-efficient systems, and renewable energy sources where possible. Their forward-thinking approach ensures that their buildings not only reduce environmental impact but also meet the ethical expectations of modern businesses and their employees.

By balancing aesthetics, functionality, wellness, technology, and sustainability, Redcar elevates the concept of office design to a new level of sophistication. Their projects are more than just places to work; they are environments that inspire innovation, foster collaboration, and support the overall well-being of the people who use them.

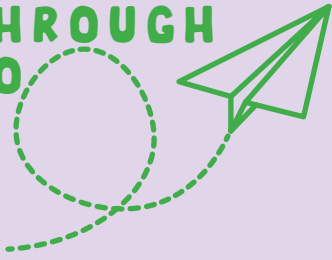


redcar

INDUSTRY
ACCIDENTS
2010
HOMES
MEMBERS
HEALTH
OCCUPATIONAL
INJURY
PREVENTION



SCAN WITH
PHONE FOR
FLYTHROUGH
VIDEO



INDU
STRY

RICH MALOOF
rm@industrypartners.com
CA BRE No. 02009527

SCOTT RIGSBY
sr@industrypartners.com
CA BRE No. 01252835

INDUSTRYPARTNERS.COM
310.395.5151
CA BRE No. 01900833