

Shoppes at Quail Springs

3000 W Memorial Road
Oklahoma City, Oklahoma 73120

Memorial Corridor Office Space Available

Excellent location at the southwest corner of North May Avenue and Memorial Road/Kilpatrick Turnpike. Retail shops and restaurants line the first level and office space is positioned on the second floor. Local Ownership is on site and the property is professionally managed.

Easy access to the Kilpatrick Turnpike and close proximity to Hefner Parkway/Highway 74. Numerous amenities are on site, including: Starbucks, several restaurants, The UPS Store and a title company.

Property Details

- + Building Size
 - 91,027 SF
- + Available Space
 - Suite 210 - \pm 2,174 RSF
 - Suite 213 - \pm 4,670 RSF
- + Built in 2017
- + 2 Stories
- + 440 parking spaces

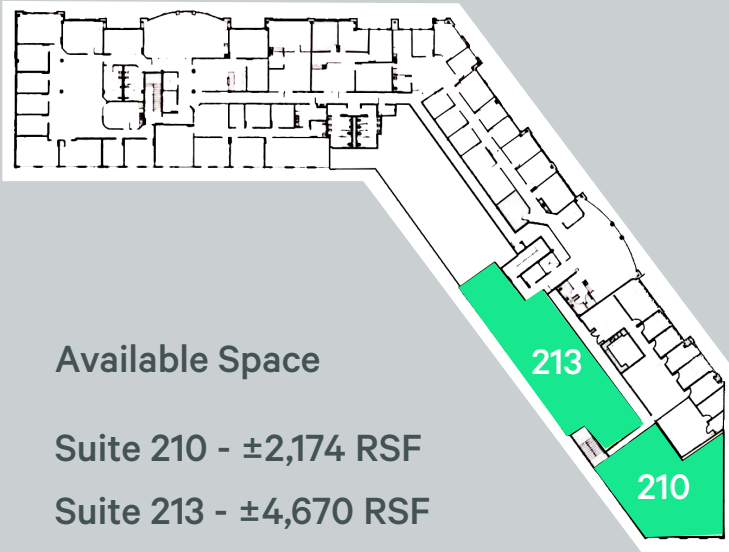
Office Space Available on the 2nd Floor | Lease Rate - \$25.00/SF FSG



Shoppes at Quail Springs

3000 W Memorial Road | Oklahoma City, Oklahoma 73120

For Lease



Contact Us

Tom Lange

Vice President

+1 405 607 6249

thomas.lange@cbre.com

Jim Austin

Vice President

+1 405 607 6252

jim.austin@cbre.com

© 2021 CBRE, Inc. All rights reserved. This information has been obtained from sources believed reliable, but has not been verified for accuracy or completeness. You should conduct a careful, independent investigation of the property and verify all information. Any reliance on this information is solely at your own risk. CBRE and the CBRE logo are service marks of CBRE, Inc. All other marks displayed on this document are the property of their respective owners, and the use of such logos does not imply any affiliation with or endorsement of CBRE. Photos herein are the property of their respective owners. Use of these images without the express written consent of the owner is prohibited.

www.cbre.us/oklahomacity

CBRE