



Former Wasatch/Squatters Brewery

1763 S. 300 W., SALT LAKE CITY, UT 84115

For Lease

Property Highlights

- 30,357 SF Available
 - ±3,122 SF Office
 - ±2,241 SF Office/Showroom
 - ±881 SF Mezzanine
 - ±27,235 SF Warehouse
 - ±600 SF Refrigerated Storage
- ±800 SF of fenced outside storage
- 17'-19' Clear Height
- Three (3) Ground Level Doors
 - Two (2) (12'x12')
 - One (1) (12'x18')
- Two (2) Dock High Doors (8'x9') equipped with Seals, Bumpers, and Truck Well
 - One (1) equipped with Edge of Dock Leveler
 - One (1) equipped with Hydraulic Pit Leveler
- 1600A / 480/277V / 3-Phase / 4 Wire
- 51 Parking Stalls
- ESFR fire suppression
- Easy access to I-15 & I-80
- Former Full Scale Brewery
- Great Location for Retail or Flex User
- High Traffic Site with Excellent Visibility & Exposure

Nearby Retailers:



For information, please contact:

Garrett Blomquist

t 801.727.4414

gblomquist@newmarkmw.com

[View Profile](#)

Jeff Heaton, SIOR

t 801.578.5539

jheaton@newmarkmw.com

[View Profile](#)

Eli Priest

t 801.746.4746

epriest@newmarkmw.com

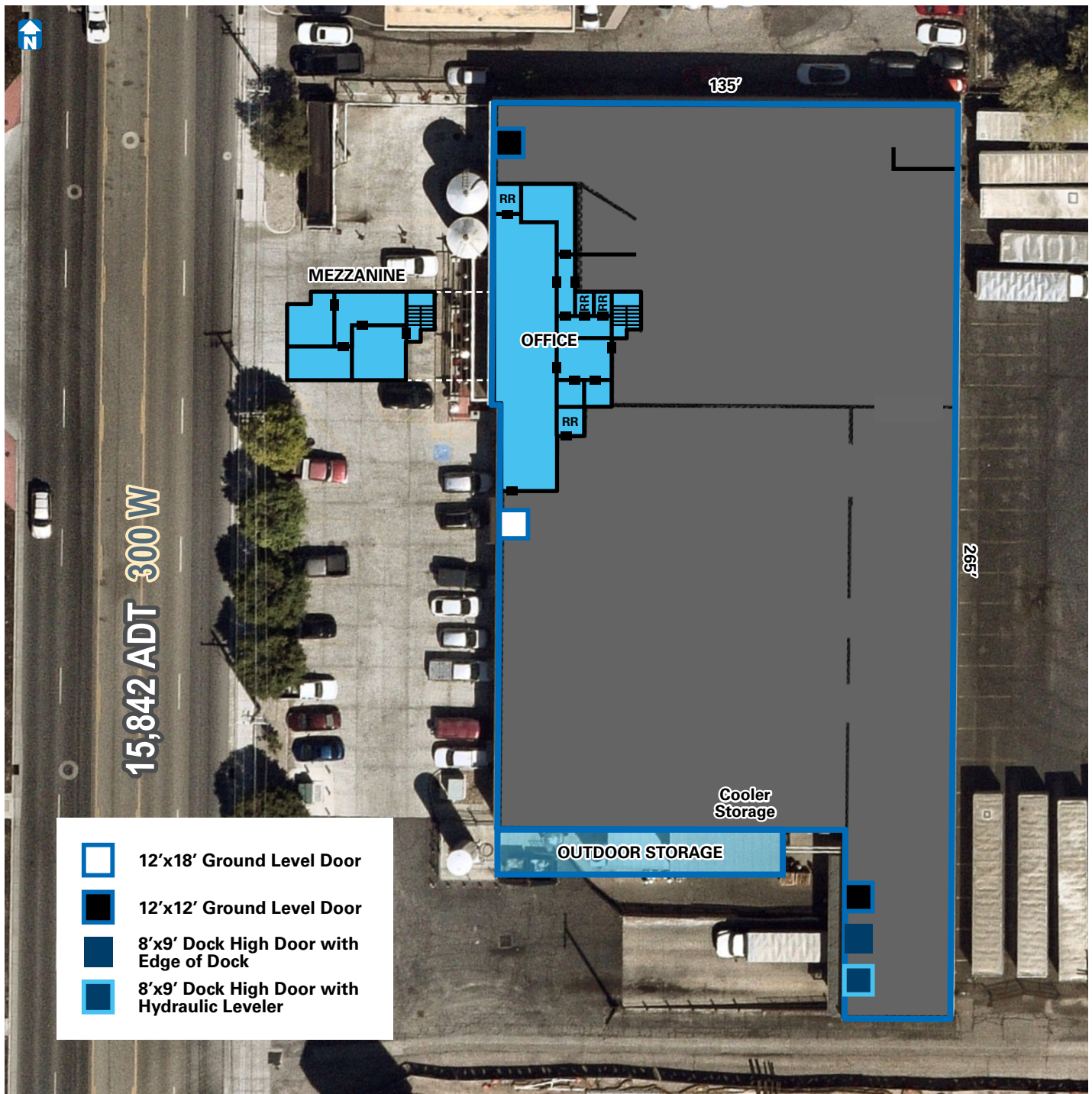
[View Profile](#)

NEWMARK



newmarkmw.com

The information contained herein has been obtained from sources deemed reliable but has not been verified and no guarantee, warranty or representation, either express or implied, is made with respect to such information. Terms of sale or lease and availability are subject to change or withdrawal without notice.



For information, please contact:

Garrett Blomquist

t 801.727.4414

gblomquist@newmarkmw.com

[View Profile](#)

Jeff Heaton, SIOR

t 801.578.5539

jheaton@newmarkmw.com

[View Profile](#)

Eli Priest

t 801.746.4746

epriest@newmarkmw.com

[View Profile](#)



newmarkmw.com

The information contained herein has been obtained from sources deemed reliable but has not been verified and no guarantee, warranty or representation, either express or implied, is made with respect to such information. Terms of sale or lease and availability are subject to change or withdrawal without notice.

