

ONE UNIT AVAILABLE!



PILOT

PROPERTY GROUP

THE CORNERS

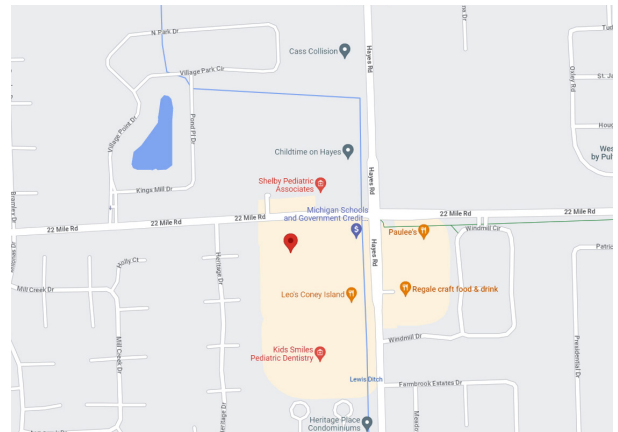
48865-48935 HAYES ROAD, SHELBY TOWNSHIP, 48315

PROPERTY OVERVIEW:

Last Unit Available in one of Shelby Township's premier shopping centers.
Heavy traffic location.

Great mix of tenants; join Leo's Coney Island, Hamlin Pub and more.
Suite 48921 includes office, open area, restroom, and storage.

Property Type: Retail/Office
Cross Streets: SW Corner of 22 Mile and Hayes Road
Total Square Footage: 56,650
Building Name: The Corners
Minimum Square Footage: 2,644
Maximum Square Footage: 2,644
Lot Size: 7.38 Acres
Year Built: 2003
Parking Spaces: 350+
Lease Rate: \$13.00/SF
Lease Type: NNN



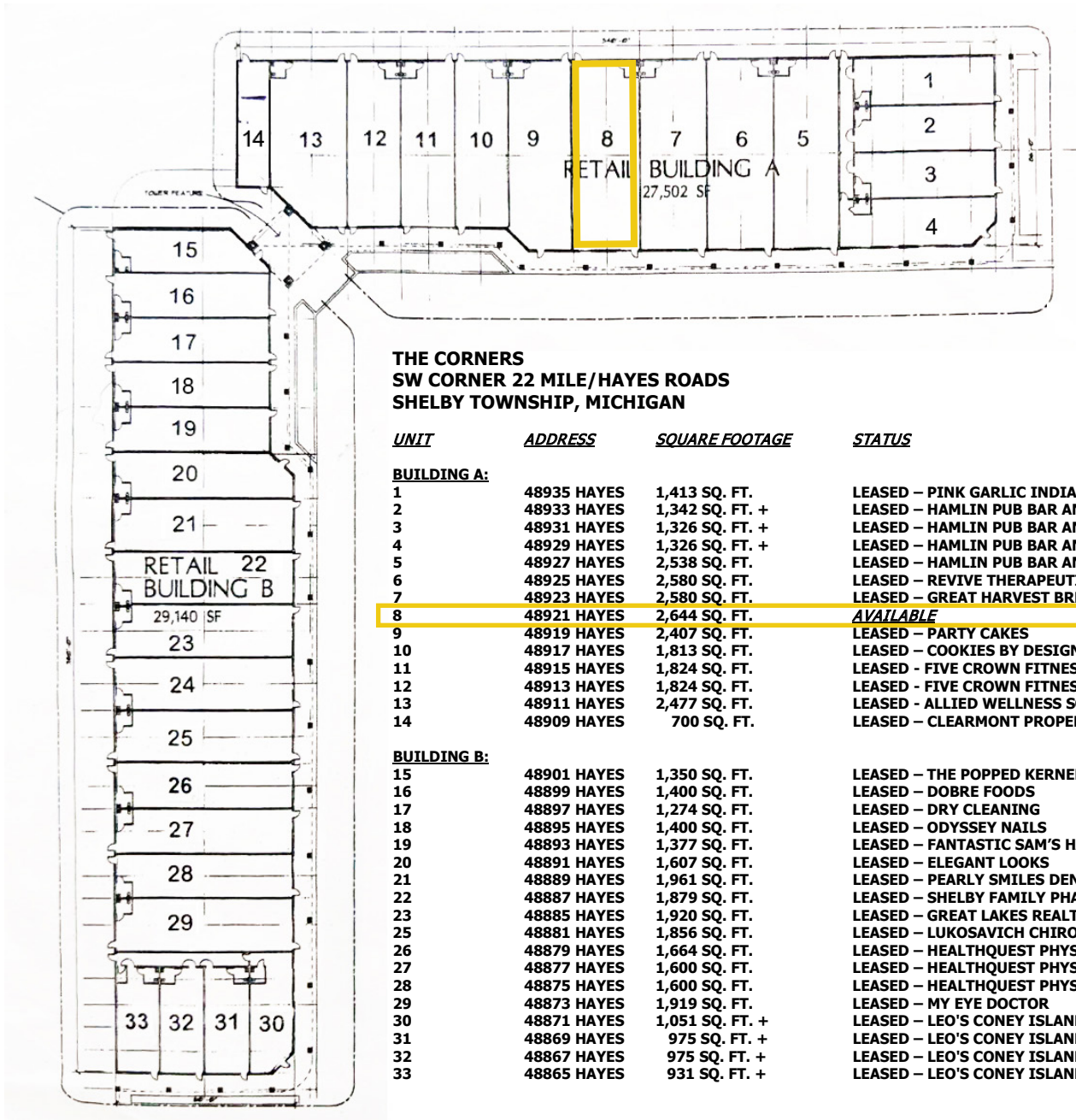
AGENT CONTACT INFO

ANDREA BERCICH O: 586.254.0900 • C: 586.530.0014 • ambercich@gmail.com

Matching the right people to the right place.

Offices in Sterling Heights and Port Huron to serve you
586.254.0900 • www.pilotpg.com

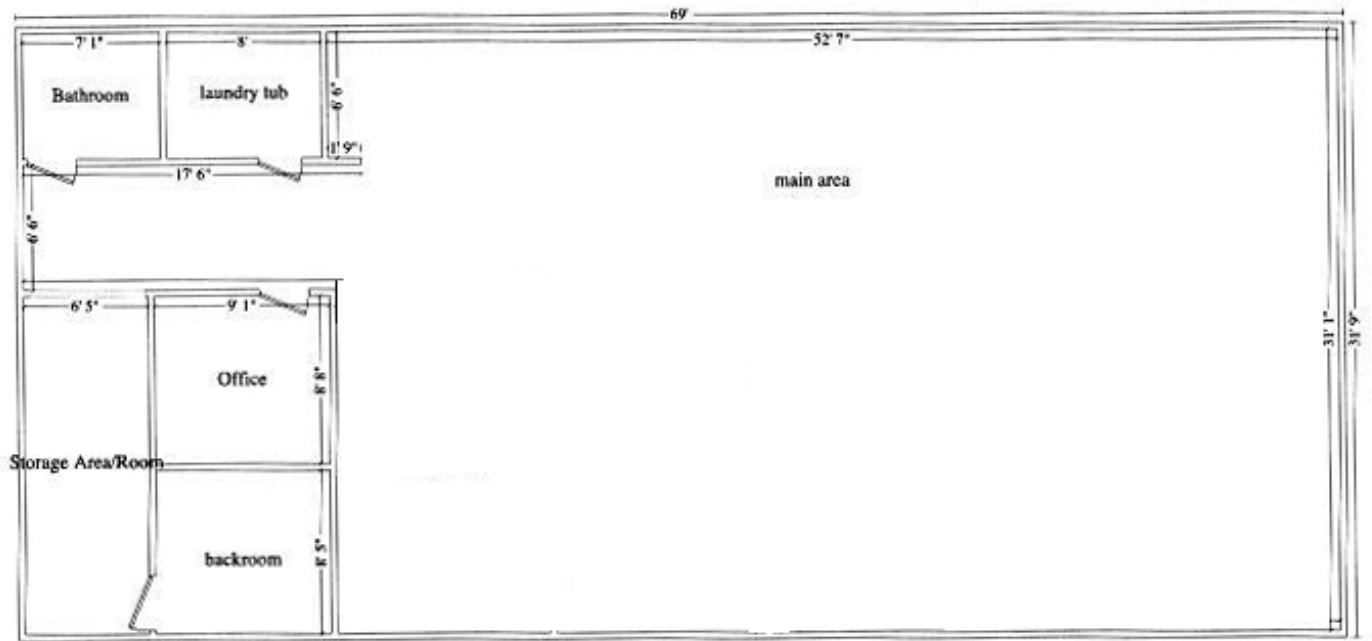
SITE PLAN



Matching the right people to the right place.

Offices in Sterling Heights and Port Huron to serve you
586.254.0900 • www.pilotpg.com

48921 HAYES
2,644 SQ. FT.



Matching the right people to the right place.

Offices in Sterling Heights and Port Huron to serve you
586.254.0900 • www.pilotpg.com