



PROPERTY HIGHLIGHTS

- Available SF: Bay 3351 is 18,129 +/- SF
- Lease Rate: Upon request
- 2024 Estimated OPEX: \$3.81 psf
- Bay 3351 has three (3) docks and three (3) grade level loading doors
- Space has approx. 800 SF of office space
- Grade level doors are 10'0" wide by 14'0" tall and dock level doors are 10'0" wide by 12'0" tall
- Ceiling height is 20' clear
- The bay has 3 Phase Power
- One of a kind location with excellent access to I-95, I-595, Florida Turnpike, Fort Lauderdale Hollywood International Airport and Port Everglades.

For more information:

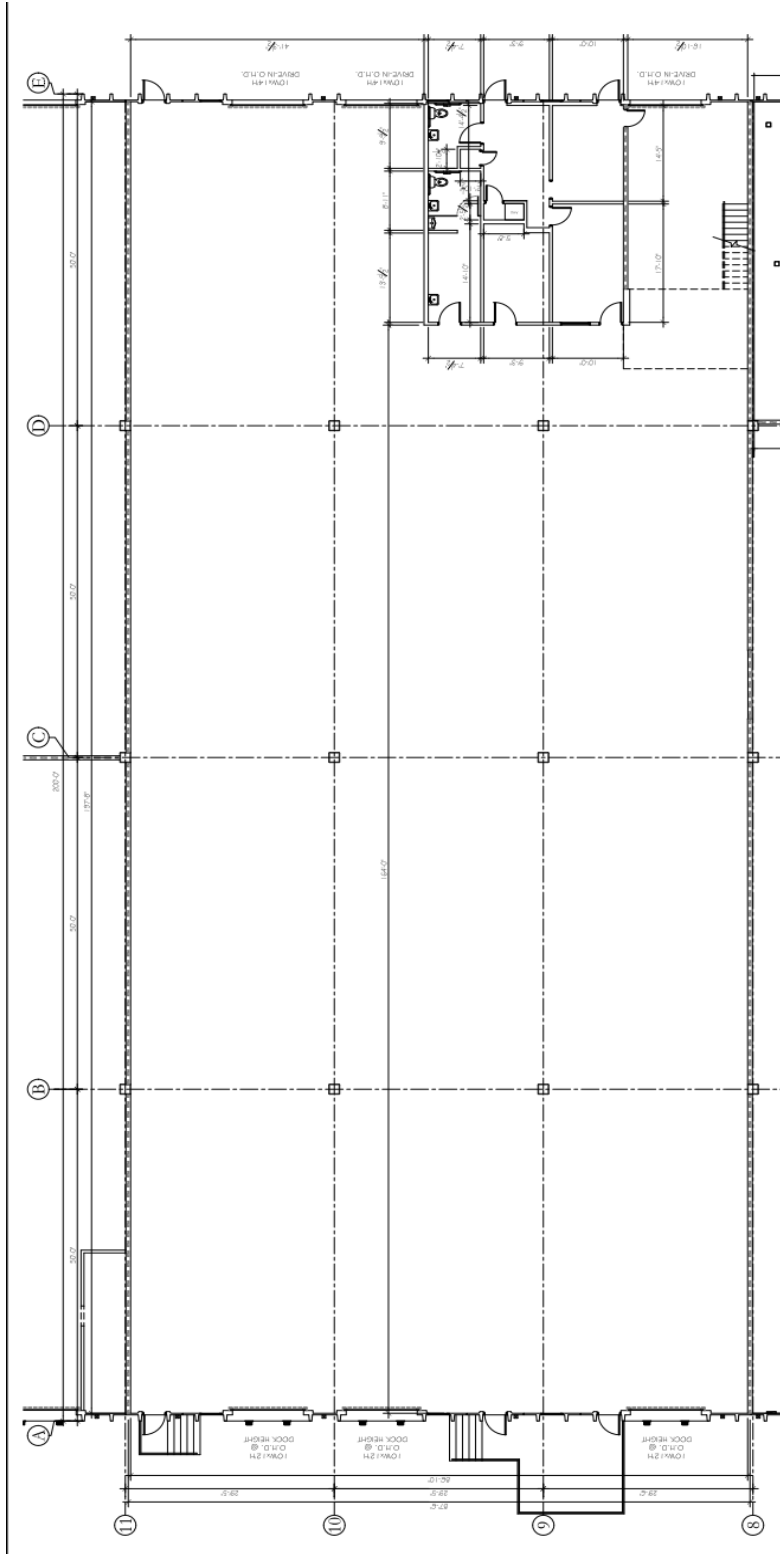
Jonathan Thiel

954.652.2020 | Jthiel@Bergercommercial.Com
bergercommercial.com

St. George Guardabassi

954.652.2032 | St.George@Bergercommercial.Com





For more information:

Jonathan Thiel

954.652.2020 | Jthiel@Bergercommercial.Com
bergercommercial.com

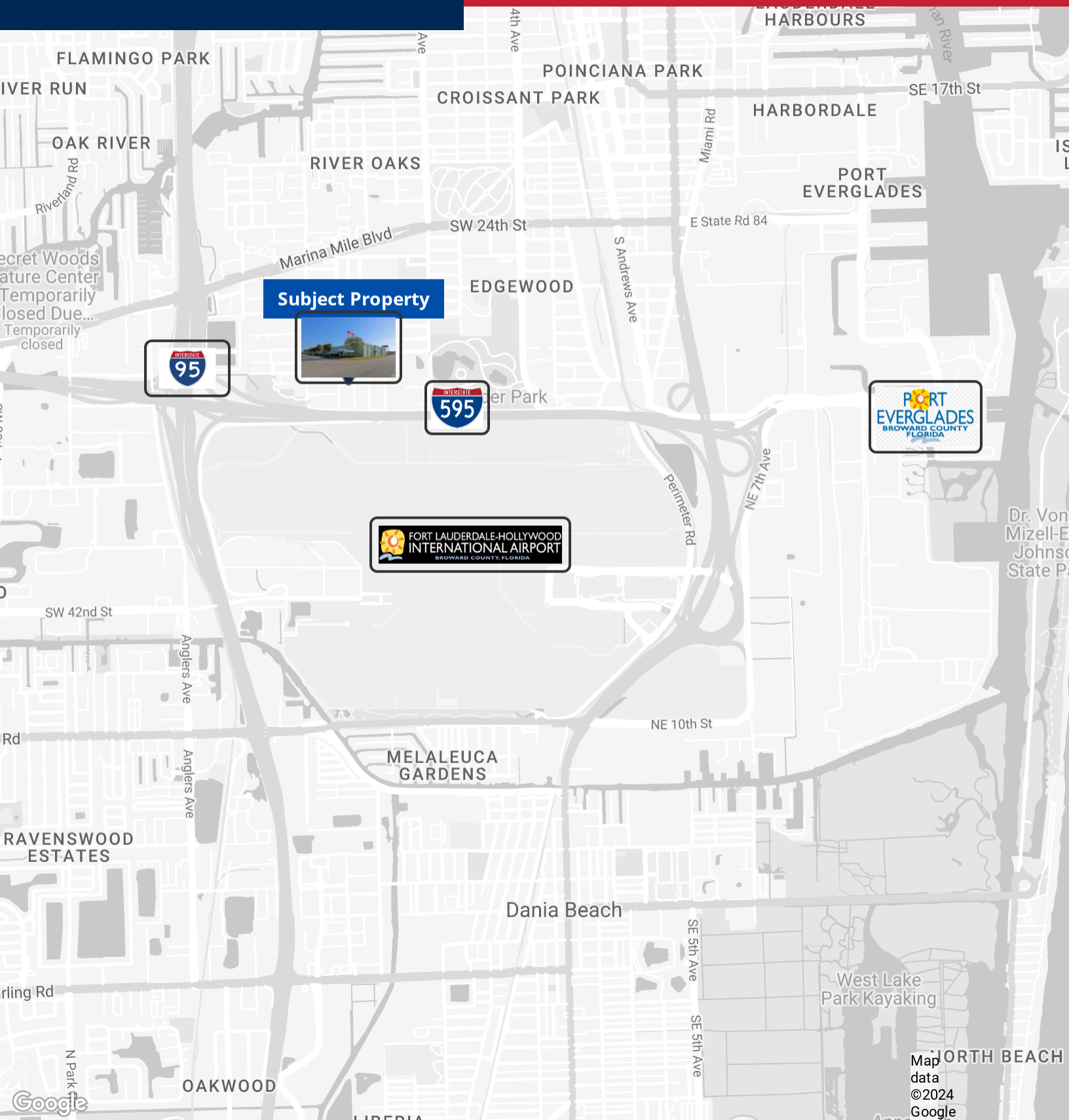
St. George Guardabassi

954.652.2032 | St.George@Bergercommercial.Com



SCHAEFER INDUSTRIAL PARK

LOCATION MAP



For more information:

Jonathan Thiel

954.652.2020 | Jthiel@Bergercommercial.com
bergercommercial.com

St. George Guardabassi

954.652.2032 | St.George@Bergercommercial.com



COMMERCIAL BROKERAGE AND PROPERTY MANAGEMENT