

GORDON

COMMERCIAL REAL ESTATE BROKERAGE

FOR LEASE :: 2447 SACRAMENTO AVENUE, BERKELEY, CA

Bright Retail Space at Signalized Intersection in Vibrant East Bay Location



CONTACT: KEVIN GORDON • 510 898-0513 • kevin@gordoncommercial.com • DRE# 01884390

USES INCLUDING RETAIL, FITNESS, SERVICE COMMERCIAL

SIZE: ±946 rsf

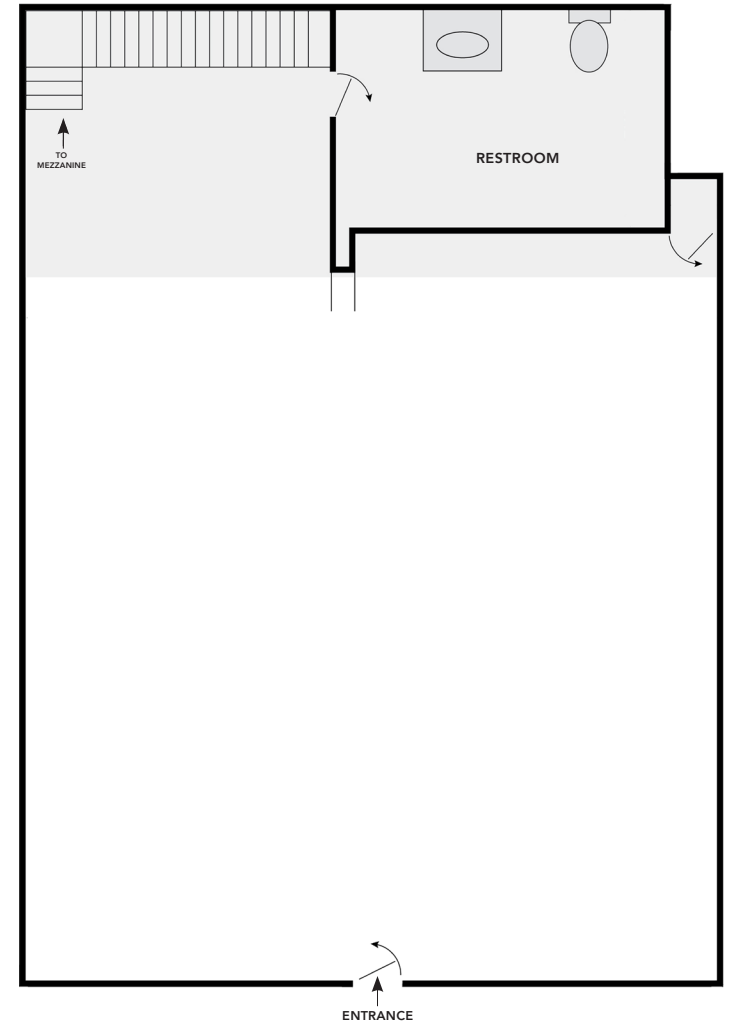
ASKING RENT: \$2.75 psf/month NNN

ZONED: C-SA (South Area Commercial)

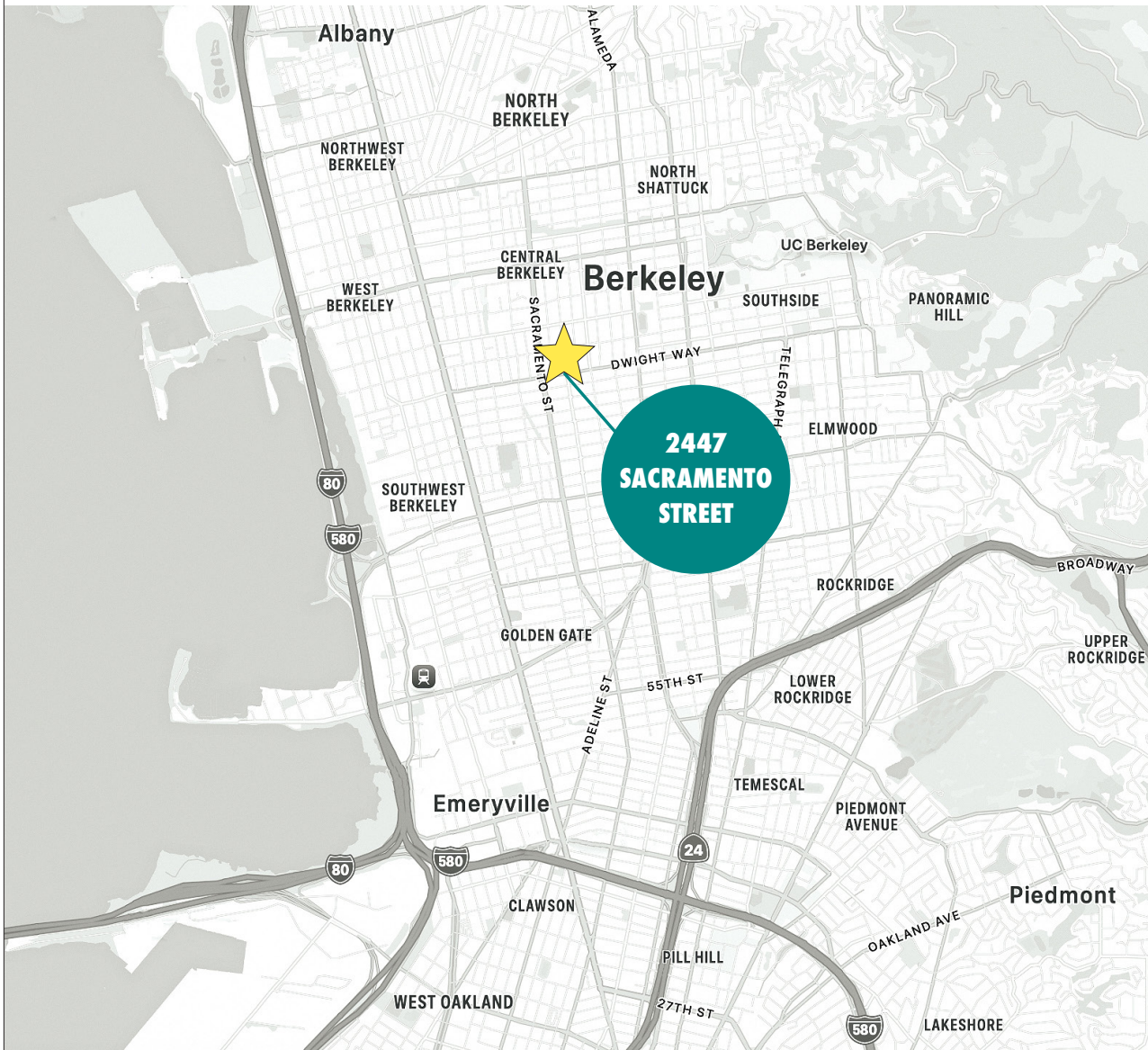


- Approximately 12' ceilings with exposed wood beams
- Nice window frontage with clerestory glass windows provide abundant natural light
- Bonus mezzanine space
- Access to rear yard area for storage of refuse
- Private restroom
- Many different potential uses
- Easy street parking
- Located on a bustling Berkeley street corner, at the intersection of Dwight Way and Sacramento Street
- Significant car traffic and AC transit bus stop
- Neighboring businesses include: Mehak Indian Cuisine, Homemade Cafe, Breads of India, Tantie's Cafe, Alex Market, and Berkeley Classroom Matters
- Excellent access to the entire SF Bay area via AC Transit





SACRAMENTO STREET



- Situated in a charming neighborhood of Central Berkeley
- Densely populated, high-traffic area
- AC Transit bus stops on 3 corners of intersection
- 1 block from Bicycle Boulevard
- 6 blocks to Downtown Berkeley
- Close to UC Berkeley
- Easy freeway access to entire SF bay area

GORDON

COMMERCIAL REAL ESTATE BROKERAGE

2447 SACRAMENTO STREET, BERKELEY, CA
NEIGHBORHOOD



The information contained herein has been provided by the owner of the property or other sources we deem reliable. We have no reason to doubt its accuracy, but we cannot guarantee it. All information should be verified prior to leasing.