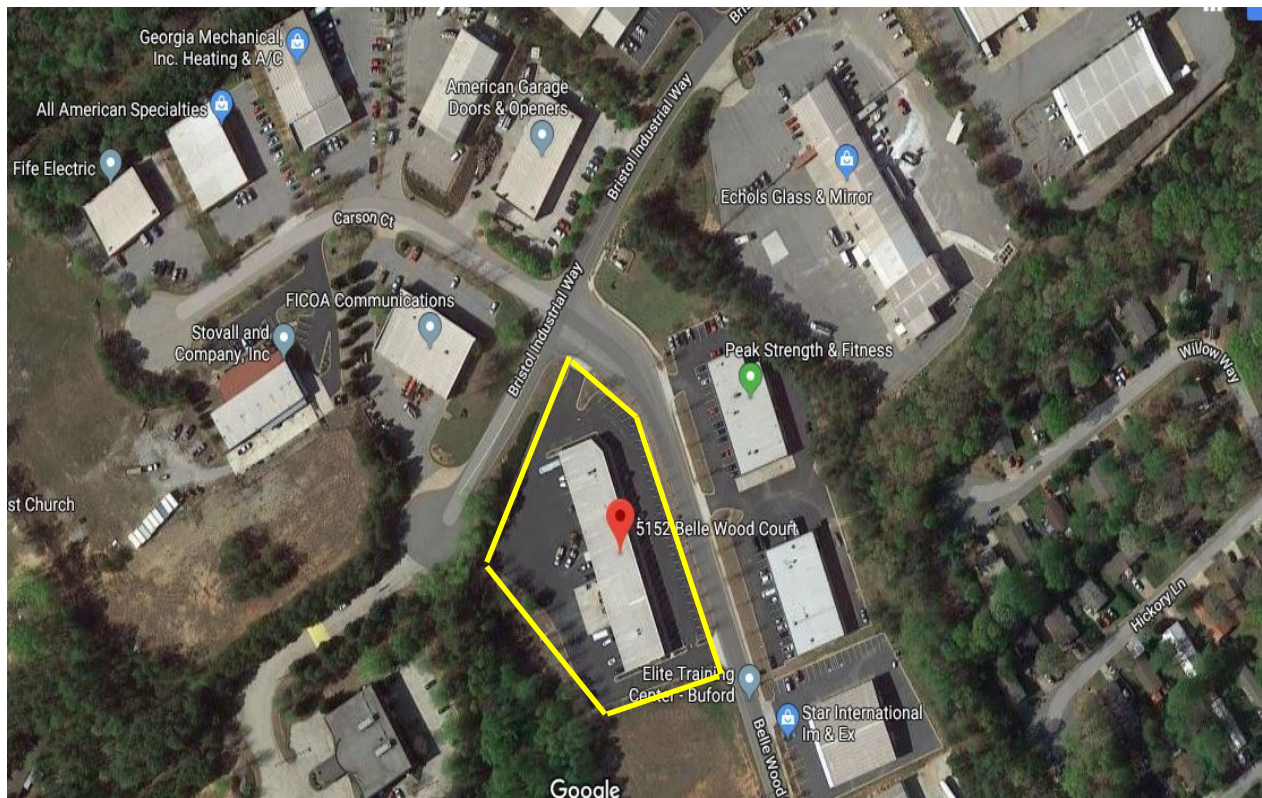




FOR LEASE

5152 - BELLE WOOD COURT - BUFORD - GA - 30518

FLEX INDUSTRIAL SPACE AVAILABLE IN BUFORD



4800 SQ. FT. SUITE IN BRISTOL INDUSTRIAL PARK

- ◆ Great location in industrial park less than 1/2 mile off Exit 8 on I-985
- ◆ Space is about 2800 SF warehouse & 2000 SF office
- ◆ Suite has multiple offices, open work spaces and break area.
- ◆ Space has two 16' x 12' roll up doors– one a drive in & one a dock high
- ◆ Ample parking in front and generous area behind building.

LEASE RATE: \$10.00/SF & MODIFIED GROSS LEASE

CONTACT

STEPHEN REYNOLDS

770.718.5117

SREYNOLDS@NORTONCOMMERCIAL.COM



FOR LEASE

5152 - BELLE WOOD COURT - BUFORD - GA - 30518



CONTACT

STEPHEN REYNOLDS

770.718.5117

SREYNOLDS@NORTONCOMMERCIAL.COM