

WELLS FARGO

WELLS FARGO CENTER
333 SE 2ND AVENUE
MIAMI, FL 33131

47TH FLOOR | 25,717 SF

- **LAST FULL FLOOR PENTHOUSE AVAILABLE IN MIAMI**
- **UNOBSTRUCTED BISCAYNE BAY VIEWS**

333 SE 2nd Avenue,
Suite 3900
Miami, FL 33131 | USA
cushmanwakefield.com

FOR SUBLEASE

333 SE 2nd Avenue
Miami, FL 33131



47TH FLOOR | 25,717 SF

Property Highlights

Penthouse Opportunity Sublease or Direct with Landlord

- **Premises:** Entire 47th Floor (Penthouse)
- **Square Footage:** 25,717 SF
- **Pricing:** \$99.00/RSF Full Service
- **Condition of Premises:** Build out scheduled to be complete by December 15, 2024
- **Lease Expiration :** February 6, 2034
- **Availability:** Immediately Available



Experience the pinnacle of luxury and success in the last downtown Miami penthouse office for sublease, featuring unparalleled 360° views of the city, the Everglades & ocean views towards the Bahamas.

Save valuable commuting time — penthouse office space just across the street from the I-95 on & off ramps in Downtown Miami.

Contact

JOHN T. MARSHALL
Executive Managing Director
+1 305 533 2896
john.t.marshall@cushwake.com

ALAN R. KLEBER, MCR
Vice Chairman
+1 305 533 2885
alan.kleber@cushwake.com

North View



South View



West View



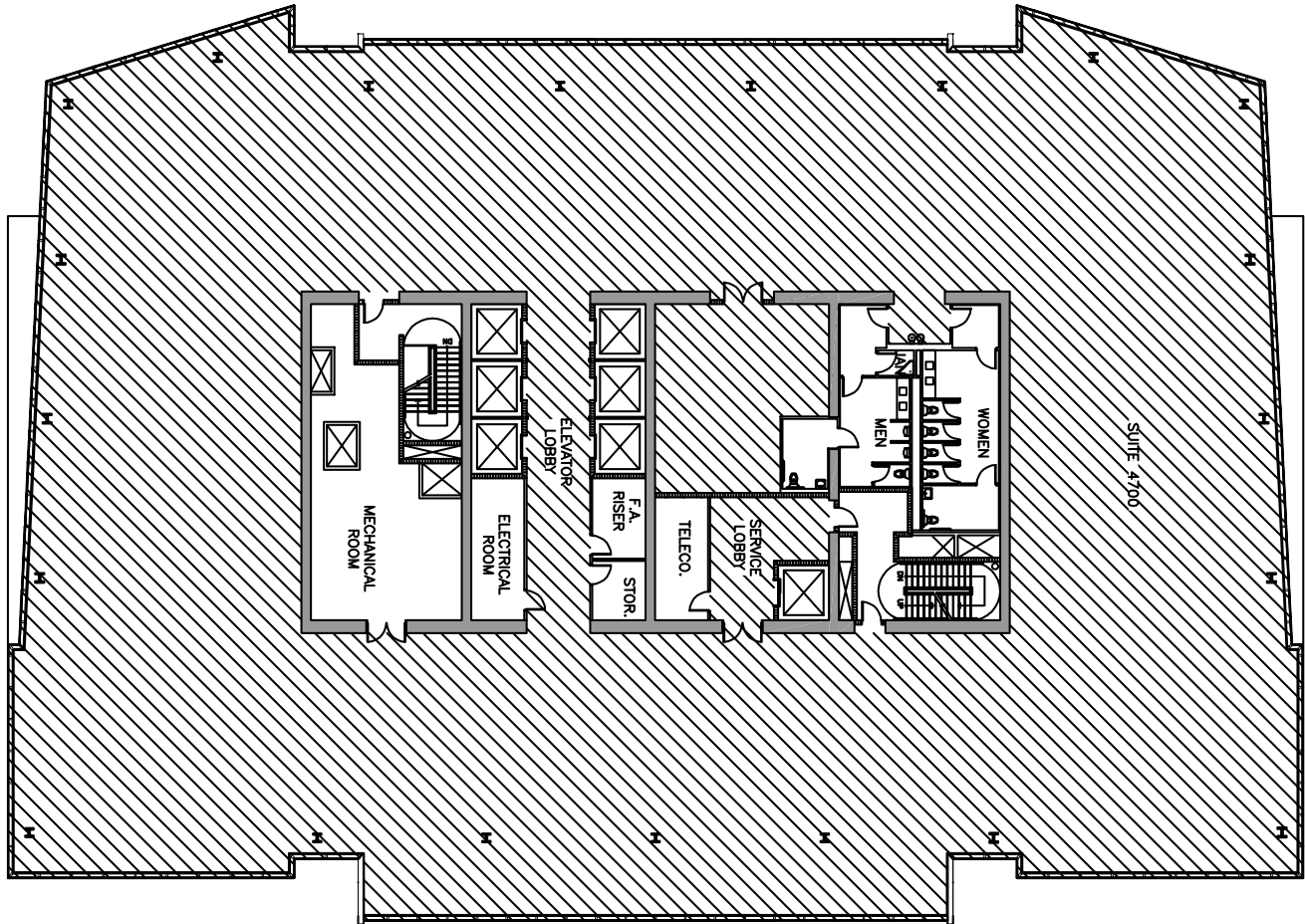
East View



Contact

JOHN T. MARSHALL
Executive Managing Director
+1 305 533 2896
john.t.marshall@cushwake.com

ALAN R. KLEBER, MCR
Vice Chairman
+1 305 533 2885
alan.kleber@cushwake.com

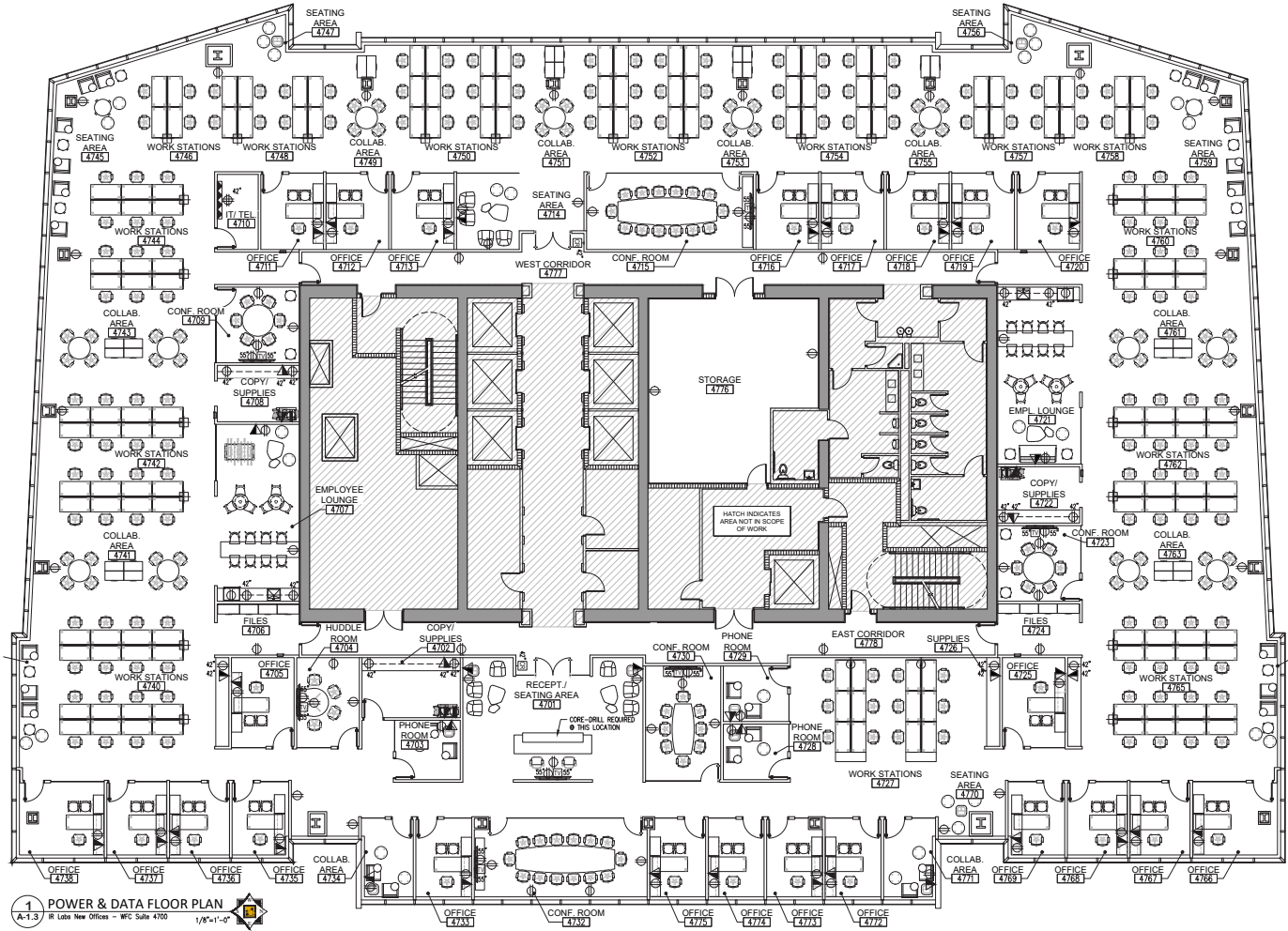


47TH FLOOR (PH) 25,717 SF

Contact

JOHN T. MARSHALL
Executive Managing Director
+1 305 533 2896
john.t.marshall@cushwake.com

ALAN R. KLEBER, MCR
Vice Chairman
+1 305 533 2885
alan.kleber@cushwake.com



47TH FLOOR (PH) 25,717 SF

Contact

JOHN T. MARSHALL
 Executive Managing Director
 +1 305 533 2896
 john.t.marshall@cushwake.com

ALAN R. KLEBER, MCR
 Vice Chairman
 +1 305 533 2885
 alan.kleber@cushwake.com