



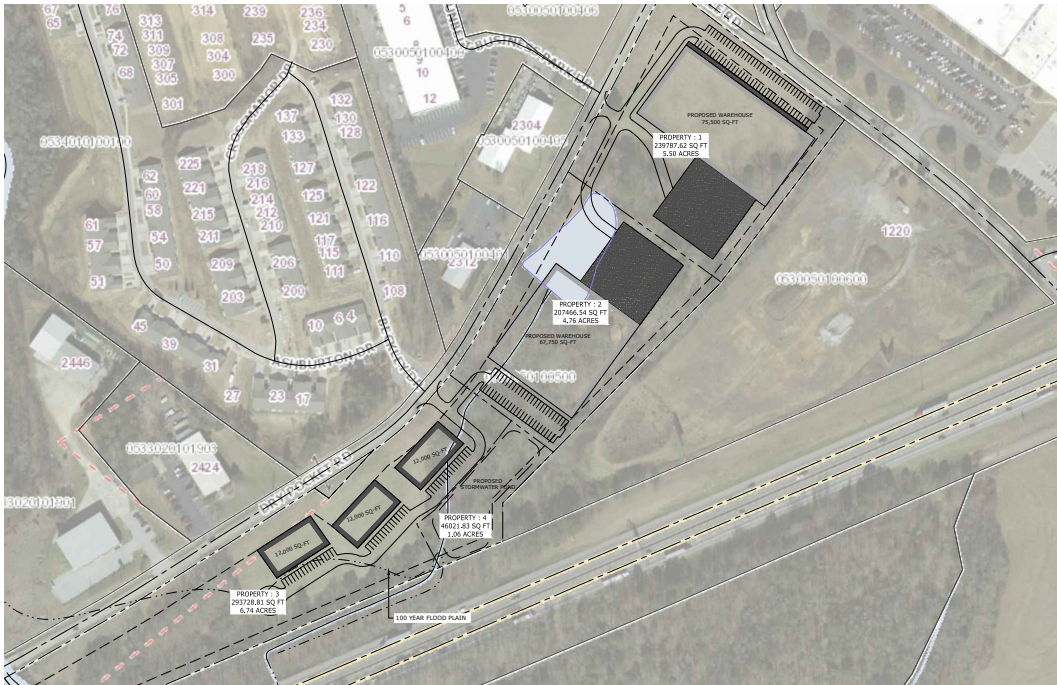
**FOR LEASE**  
±75,500 SF Class A Multi-Tenant  
Industrial Building Situated on 5.90 Acres



1204 S Batesville Rd, Greer 29650



# 1204 S Batesville Rd, Greer 29650



<b>Building SF</b>	±75,500 SF
<b>Spec Office</b>	±2,124 SF
<b>Clear Height</b>	32'
<b>Column Spacing</b>	2 - 35'6" x 50' 6 - 51' x 50'
<b>Dimensions</b>	377' x 200'
<b>Load Type</b>	Rear Load
<b>Bay Size</b>	2 - ±7,100 SF 6 - ±10,200 SF
<b>Docks</b>	7
<b>Dock Doors</b>	9' x 10'
<b>Lighting</b>	LED Motion Sensored
<b>Sprinkler System</b>	ESFR
<b>Roof</b>	TPO 60 mil.
<b>Truck Court</b>	140'
<b>Loading Dock Apron</b>	53'
<b>Auto Parking</b>	50
<b>Trailer Parking</b>	12
<b>Power</b>	Duke Energy
<b>Sewer</b>	Metro Connects
<b>Water</b>	Greenville Water
<b>Gas</b>	Piedmont Natural Gas



# location.





TRADE **BRIDGE**  
— BUSINESS PARK



201 W. McBee Ave, Suite 400  
Greenville, SC 29601

**864.704.1040**



320 East Main Street, Suite 430  
Spartanburg, SC 29302

**LeeUpstate.com**



**Randall Bentley, SIOR, CCIM**  
President/ Managing Principal  
864.444.2842  
rbentley@lee-associates.com



**Micah Williams**  
Senior Associate  
864.477.0455  
mwilliams@lee-associates.com