



## 550 NE 24th St, Newcastle, OK 73065

### Property Highlights:

- Available: 1,250 - 11,250 SF
- Contiguous Space: 7,500 SF
- West end-cap designed for restaurant
- Delivery Condition: Warm-gray shell
- Co-Tenants: London Enterprises
- 96 parking spots
- Direct I-44 Access
- Zoned: C-3
- 20 Minute Commute to OKC CBD

### For Lease

\$21.00/SF + MG

### Traffic Counts:

N Mian St: 19,200 VPD (2022)

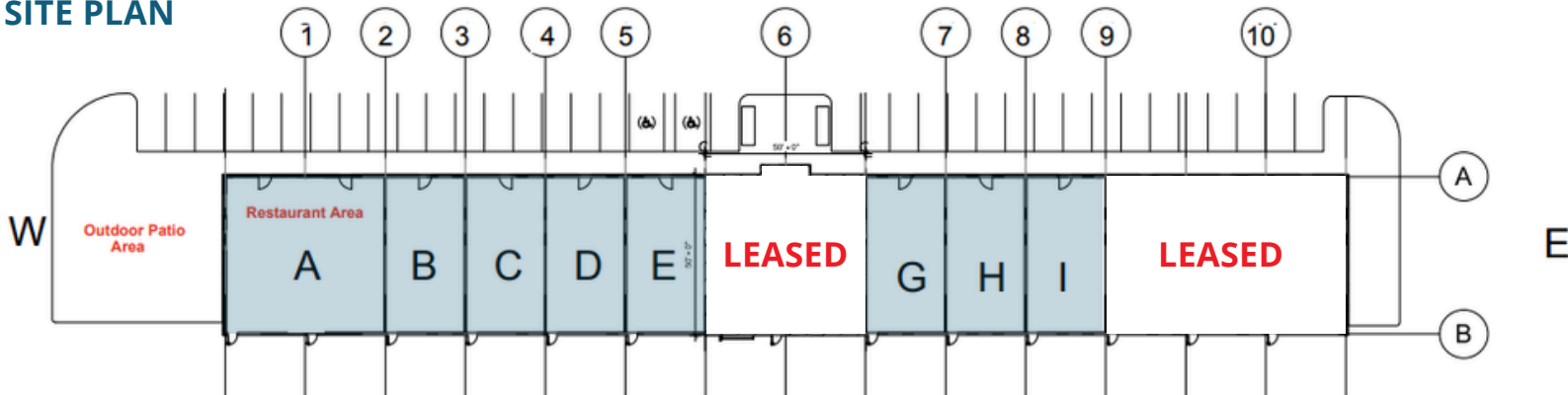
### Demographics:

	1 Mile	3 Miles	5 Miles
2023 Population	1,483	6,650	32,565
Daytime Population	1,014	3,451	5,875
Median HHI:	\$92,406	\$83,544	\$91,339
Median Age:	41	40	38
Median Home Value:	\$255,882	\$225,047	\$203,147





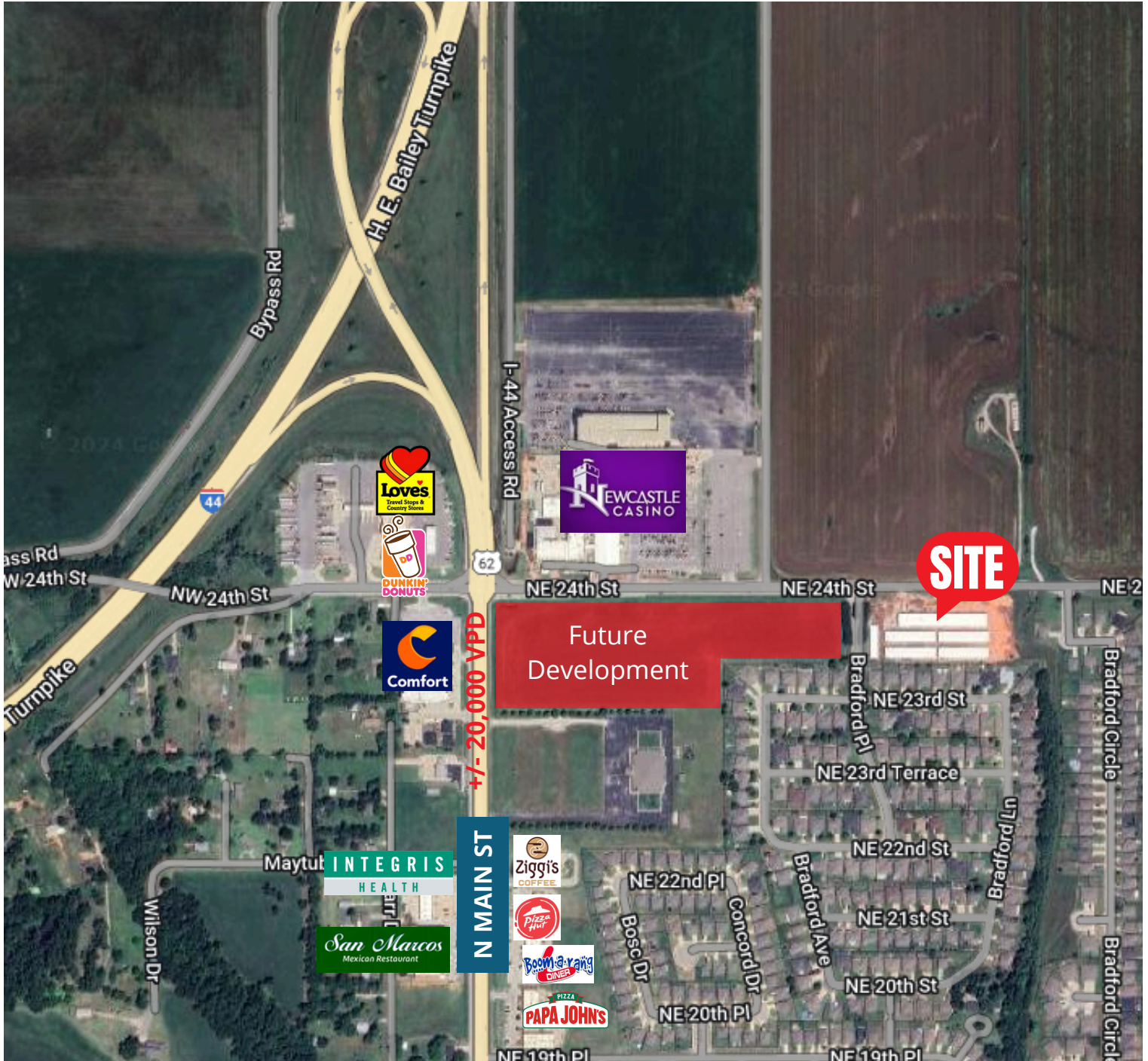
## SITE PLAN



## AVAILABLE SPACES:

- **Suite A:** 2,500 SF
- **Suite B:** 1,250 SF
- **Suite C:** 1,250 SF
- **Suite D:** 1,250 SF
- **Suite E:** 1,250 SF
- **Suite F:** LEASED
- **Suite G:** LEASED
- **Suite H:** 1,250 SF
- **Suite I:** 1,250 SF

## AERIAL PHOTO-1



## AERIEL PHOTO-2

