

Available For Lease

2,500 SF

Office, Warehouse, Service

9154 Woodend Rd., Edwardsville, KS



## Office/Warehouse & Service Space

Edwardsville, KS

For more information:

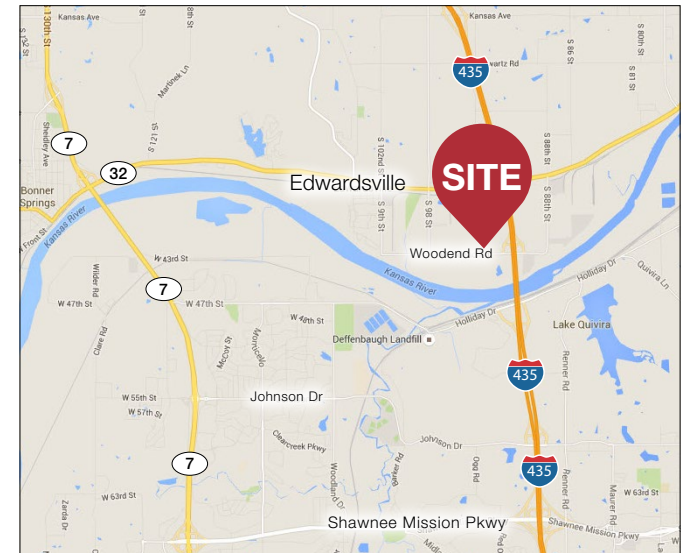
**Nathan Anderson, SIOR, CCIM**

+1 913 890 2001

nathan@nai-heartland.com

### Property Features

- 2,500 SF Available
- Small Office Area
- 14' Overhead drive-in loading doors
- 18'-22' warehouse clear height
- T-5 high efficient lighting
- I-1 Industrial Zoning
- Large concrete parking/storage area
- Immediate access to I-435
- Lease rate: \$12.00 PSF 'Net' annually



NO WARRANTY OR REPRESENTATION, EXPRESS OR IMPLIED, IS MADE AS TO THE ACCURACY OF THE INFORMATION CONTAINED HEREIN, AND THE SAME IS SUBMITTED SUBJECT TO ERRORS, OMISSIONS, CHANGE OF PRICE, RENTAL OR OTHER CONDITIONS, PRIOR SALE, LEASE OR FINANCING, OR WITHDRAWAL WITHOUT NOTICE, AND OF ANY SPECIAL LISTING CONDITIONS IMPOSED BY OUR PRINCIPALS NO WARRANTIES OR REPRESENTATIONS ARE MADE AS TO THE CONDITION OF THE PROPERTY OR ANY HAZARDS CONTAINED THEREIN ARE ANY TO BE IMPLIED.

4400 College Boulevard, Suite 170  
Overland Park, KS 66211  
[nai-heartland.com](http://nai-heartland.com)

# Aerial

9154 Woodend Rd., Edwardsville, KS



Contact for more information:

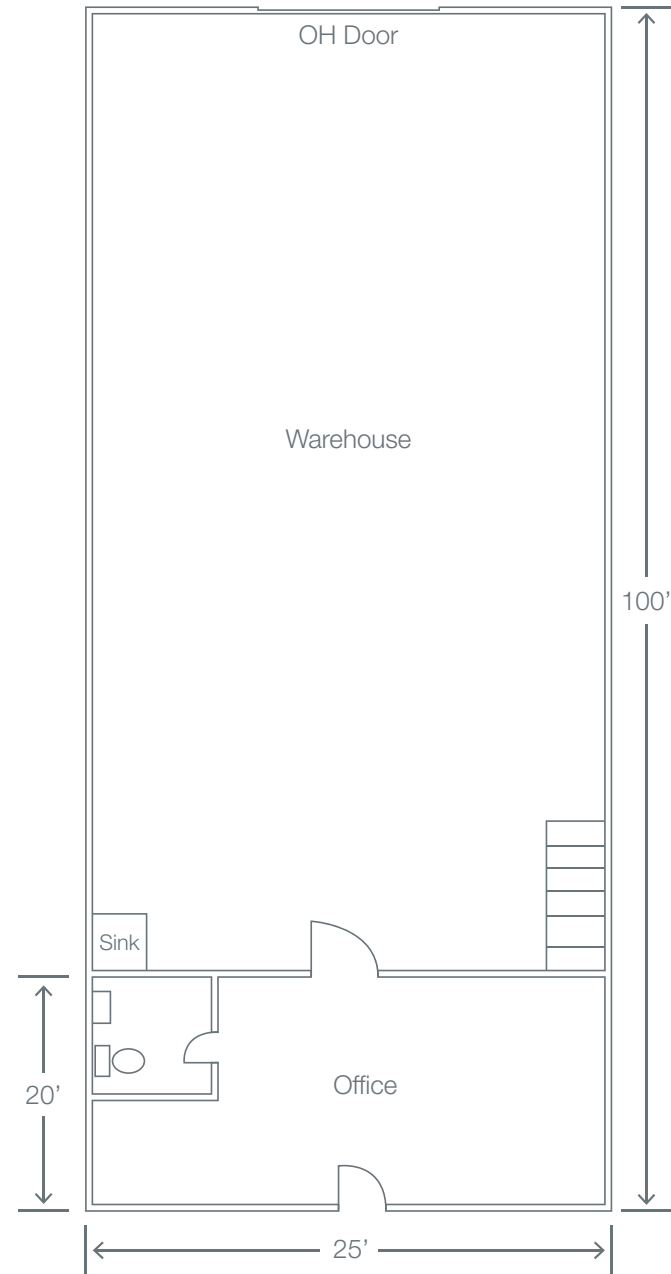
**Nathan Anderson, SIOR, CCIM**

+1 913 890 2001

nathan@nai-heartland.com

# Floor Plan, Bay C

9154 Woodend Rd., Edwardsville, KS



*\*Note: Drawing not to scale*