

# Office For Lease

Harry Robbins Assoc Inc

3733 South Tuttle Avenue Sarasota, FL 34239 | 941-924-8346

## Constitution Office for lease

2100 Constitution Blvd, Sarasota, FL, 34231

Office: General For Lease

Prepared on December 09, 2024

1 of 1 Listings



### Listing Details | Office For Lease

Suite	106
Sublease	-
Total Available Space	120 SF
Min Div/Max Contig	120 SF
Asking Rate	\$525.00 Monthly
Lease Type	-
Expenses	-

Vacant	Yes
Available Date	Now
Days On Market	38 days
Date Listed	11/01/2024
Last Modified	12/09/2024
Listing ID	41479567
Parking Spaces	-

### Description

Executive office space for lease in 2100 Constitution Square.

This space would be your own dedicated office with use of all the common areas (including a furnished waiting area, conference room, mail room, men's and women's restrooms).

Rent includes water, sewer, trash, electric bill, and Wi-Fi. There is an on site management that is there from 10-3 Monday through Friday at the reception desk.

### Property Features

#### Location Details

Address	2100 Constitution Blvd, Sarasota, FL, ...
Zoning	CN
Submarket	Sarasota
County	Sarasota

Parcels	0086130003
Name	2100 Constitution Blvd
Center/Park Name	Constitution Square
Nearest MSA	North Port-Sarasota-Bradenton

## Building Details

Sub Type	<b>General</b>
Building Status	<b>Existing</b>
Building Size	<b>6,415 SF</b>
Land Size	<b>0.51 Acres / 22,140 SF</b>
Number of Buildings	<b>1</b>
Number of Floors	<b>1</b>
Year Built/Renovated	-
Primary Constr. Type	<b>Framed</b>

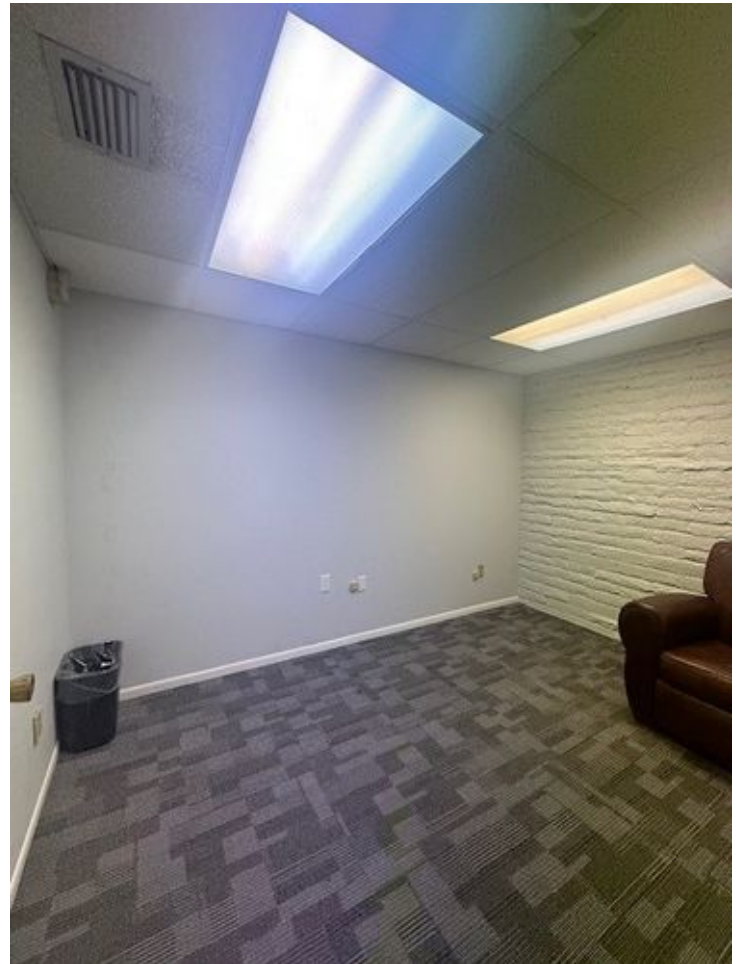
Occupancy Type	<b>Multi-tenant</b>
Building Class	<b>C</b>
Parking Spaces	-
Parking Ratio	-
Floor Size	<b>6,644 SF</b>
Water	<b>Yes</b>
Sanitary Sewer	<b>Yes</b>
Rail Service	<b>No</b>

## Property Listings

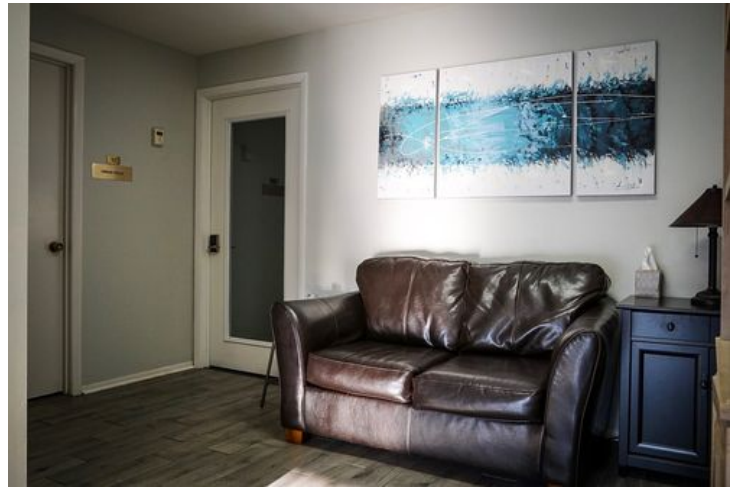
1 Listing | 120 SF | \$525.00 Monthly

Type	Condo	Space Use	Suite	Available Space	Rate	Available
For Lease	-	Office	106	120 SF	\$525.00 Month	Now

## Additional Photos









## Contact



**Troy H. Robbins**

941-924-8346

troy@robbinscommercial.com



Harry Robbins Assoc Inc