

# 8200

SOUTHPARK CIRCLE

LITTLETON, CO 80120

FLEX INDUSTRIAL SPACE  
**FOR SALE**



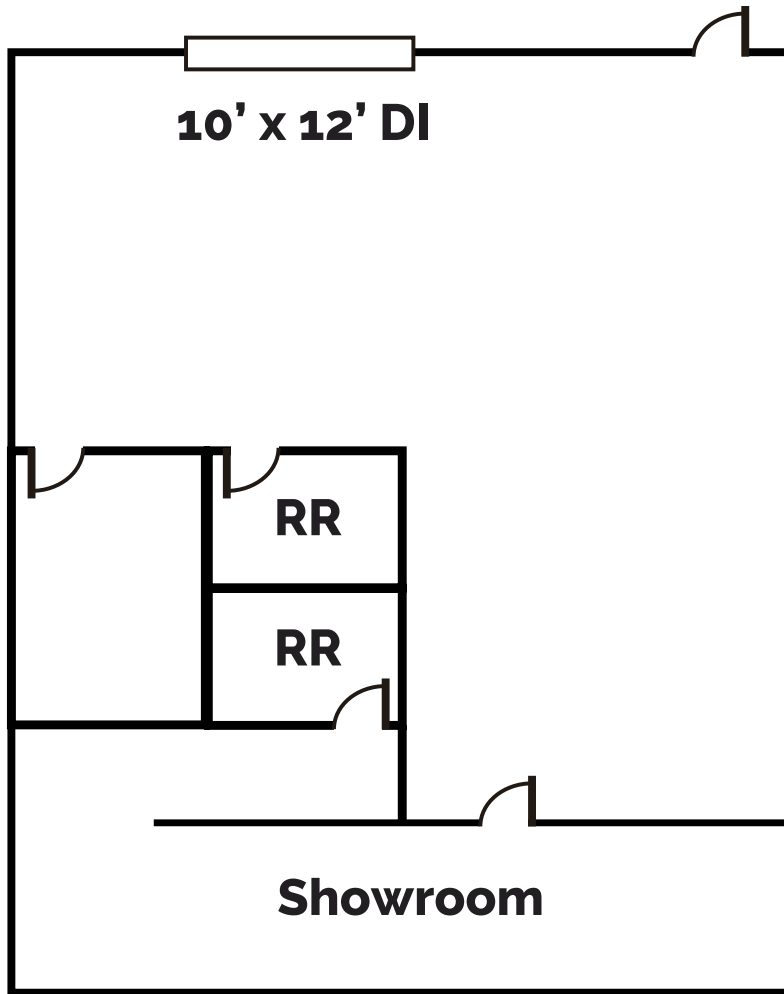
**2,950 SF**



T.J. SMITH, SIOR  
303 283 4576  
tj.smith@colliers.com

NICK RICE, SIOR  
720 833 4620  
nick.rice@colliers.com

RIGGS WINZ  
303 283 4571  
riggs.winz@colliers.com



# 2,950 SF



**Loading:**  
1 Drive-In



**Year Built:**  
2007

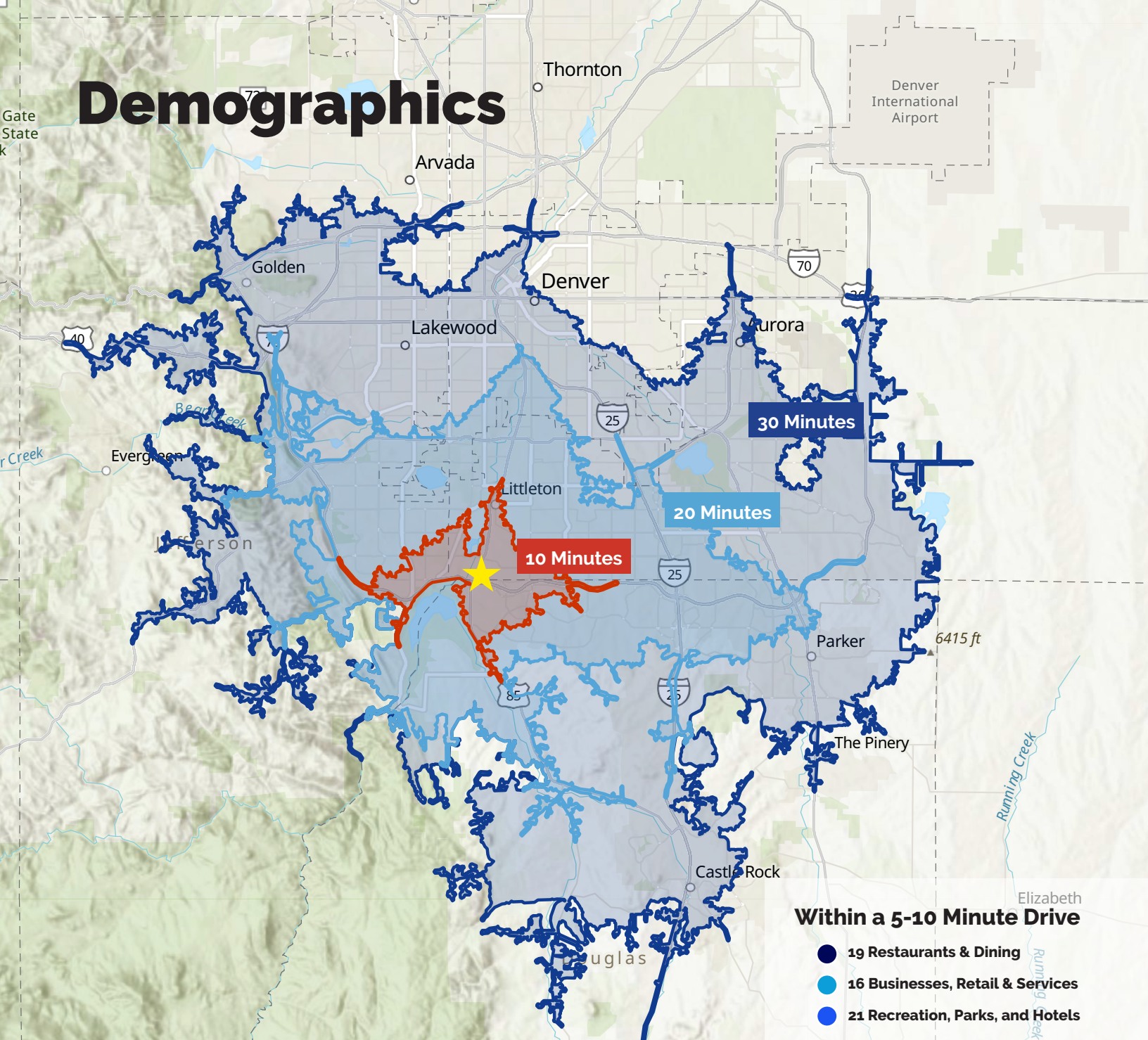


**Zoning:**  
LPDI

- Ideal for light manufacturing, production, or creative industrial users
- Clean, functional layout with a mix of warehouse and work space areas, allowing for both hands-on production and administrative functions
- \*400 amps 208V, 3 Phase
- Laguna Dust Collection System in place
- Fully temperature controlled



# Demographics



## Within a 5-10 Minute Drive

- 19 Restaurants & Dining
- 16 Businesses, Retail & Services
- 21 Recreation, Parks, and Hotels

Population Summary	10 minutes	20 minutes	30 minutes
2010 Total Population	60,717	480,352	1,348,929
2020 Total Population	67,091	535,794	1,546,795
2020 Group Quarters	607	5,098	21,892
2025 Total Population	68,040	551,700	1,612,567
2025 Group Quarters	622	5,091	22,245
2030 Total Population	69,316	568,362	1,674,090
2025-2030 Annual Rate	0.37%	0.60%	0.75%
2025 Total Daytime Population	71,894	645,806	1,754,346
Workers	40,600	399,607	1,040,496
Residents	31,294	246,199	713,850



## Restaurants & Dining

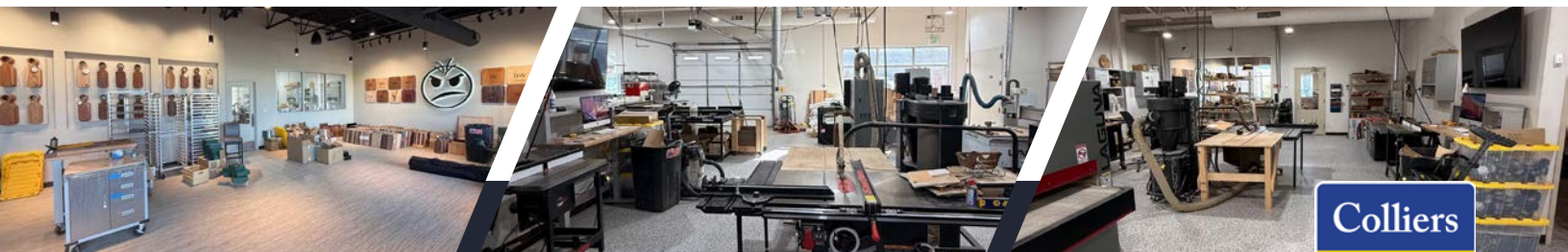
- Angelo's Taverna
- NoNo's Cafe
- Farm House @ Breckenridge Brewery
- Alamo Drafthouse (dine-in)
- ViewHouse
- Black+Haus Tavern
- Bistro 36 Drinkery & Eatery
- Bacon Social House
- The Lake House Kitchen & Tavern
- Bruno's Kitchen
- Chick-fil-A
- Shake Shack
- Daddy's Chicken Shack

## Businesses, Retail & Services

- Aspen Grove
- Market at Southpark
- Southwest Plaza
- Southbridge Retail / County Line
- Woodlawn Center
- Home Depot
- Lowe's Home Improvement
- Costco Wholesale
- King Soopers
- Safeway
- UHealth Highlands Ranch Hospital

## Recreation, Parks & Hotels

- Staybridge Suites Denver South
- Courtyard by Marriott Littleton
- Residence Inn Littleton
- Hampton Inn Denver/Highlands Ranch
- Hilton Garden Inn Denver/HR
- South Platte Park & Carson Nature Center
- Southbridge Park
- Chatfield State Park
- Alamo Drafthouse Cinema
- Total Fitness Colorado
- Chuze Fitness
- 24 Hour Fitness
- South Suburban Park & Rec District



**T.J. SMITH, SIOR**  
303 283 4576  
[tj.smith@colliers.com](mailto:tj.smith@colliers.com)

**NICK RICE, SIOR**  
720 833 4620  
[nick.rice@colliers.com](mailto:nick.rice@colliers.com)

**RIGGS WINZ**  
303 283 4571  
[riggs.winz@colliers.com](mailto:riggs.winz@colliers.com)

4643 S. Ulster St., Ste. 1000  
Denver, Co 80237  
303 745 5800 | [colliers.coim/denver](http://colliers.coim/denver)

This communication has been prepared by Colliers Denver for advertising and/or general information only. Colliers Denver makes no guarantees, representations or warranties of any kind, expressed or implied, regarding the information including, but not limited to, warranties of content, accuracy and reliability. Any interested party should undertake their own inquiries as to the accuracy of the information. Colliers Denver excludes unequivocally all inferred or implied terms, conditions and warranties arising out of this document and excludes all liability for loss and damages arising there from. This publication is the copyrighted property of Colliers Denver and/or its licensor(s). © 2023. All rights reserved. This communication is not intended to cause or induce breach of an existing listing agreement.