

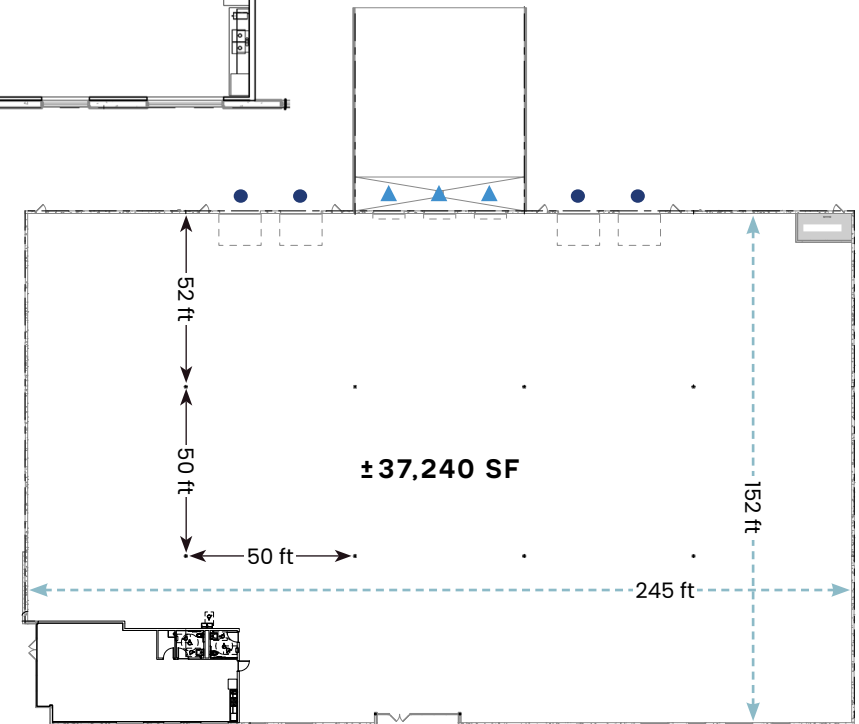
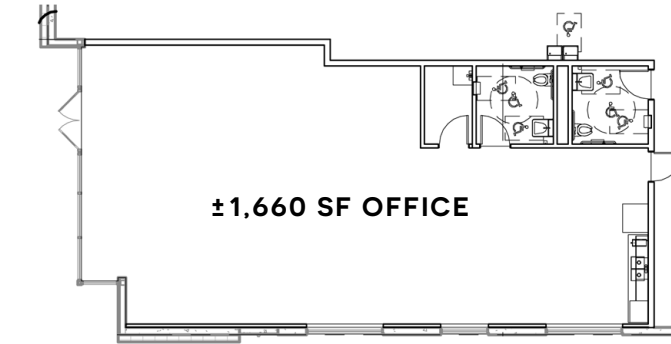


SOSSAMAN

BUSINESS CAMPUS

BUILDING 1

3305 S. SOSSAMAN ROAD, MESA



- ±37,240 SF building
- ±1,660 SF office
- ±2.90 acres
- 28' clear height
- Three dock-high doors
- Four grade-level doors
- ±93 parking spaces
- 1,600A 480/277V, 3PH
- 152' x 245' floorplate
- 50' x 50' column spacing
- Fire sprinkler system
- LED warehouse lighting
- Dock Package
- 100% HVAC warehouse with Stickpin Insulation

STEVE LARSEN, SIOR, CCIM
Vice Chairman
+1 602 282 6296
steve.larsen@jll.com

JASON MOORE, SIOR, CCIM
Managing Director
+1 602 282 6280
jason.moore@jll.com

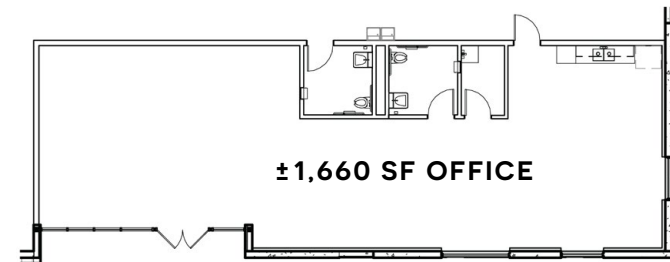
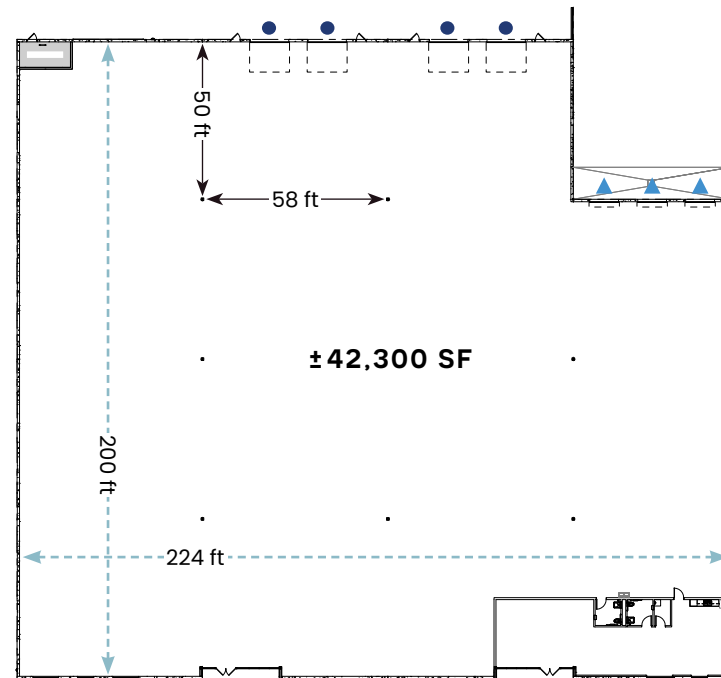
PAT HARLAN, MCR, SLCR
Senior Managing Director
+1 602 282 6298
pat.harlan@jll.com

KATIE WHITE
Associate
+1 480 760 3999
katie.white@jll.com





- ±42,00 SF building
- ±1,660 SF office
- ±2.53 acres
- 28' clear height
- Three dock-high doors
- Four grade-level doors
- ±93 parking spaces
- 2,000A 480/277V, 3PH
- 200' x 224' floorplate
- 50' x 58' column spacing
- Fire sprinkler system
- LED warehouse lighting
- Dock Package
- 100% HVAC warehouse with Stickpin Insulation



STEVE LARSEN, SIOR, CCIM
Vice Chairman
+1 602 282 6296
steve.larsen@jll.com

JASON MOORE, SIOR, CCIM
Managing Director
+1 602 282 6280
jason.moore@jll.com

PAT HARLAN, MCR, SLCR
Senior Managing Director
+1 602 282 6298
pat.harlan@jll.com

KATIE WHITE
Associate
+1 480 760 3999
katie.white@jll.com



SOSSAMAN

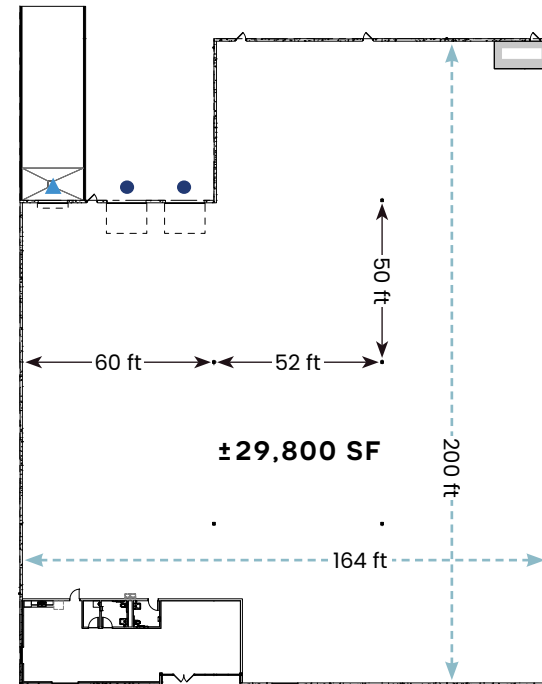
BUSINESS CAMPUS



- ±29,800 SF building
- ±1,660 SF office
- ±2.24 acres
- 28' clear height
- One dock-high door
- Two grade-level doors
- ±73 parking spaces
- 1,600A 480/277V, 3PH
- 164' x 200' floorplate
- 50' x 52' column spacing
- Fire sprinkler system
- LED warehouse lighting
- Dock Package
- 100% HVAC warehouse with Stickpin Insulation

BUILDING 3

3321 S. SOSSAMAN ROAD, MESA



STEVE LARSEN, SIOR, CCIM
Vice Chairman
+1 602 282 6296
steve.larsen@jll.com

JASON MOORE, SIOR, CCIM
Managing Director
+1 602 282 6280
jason.moore@jll.com

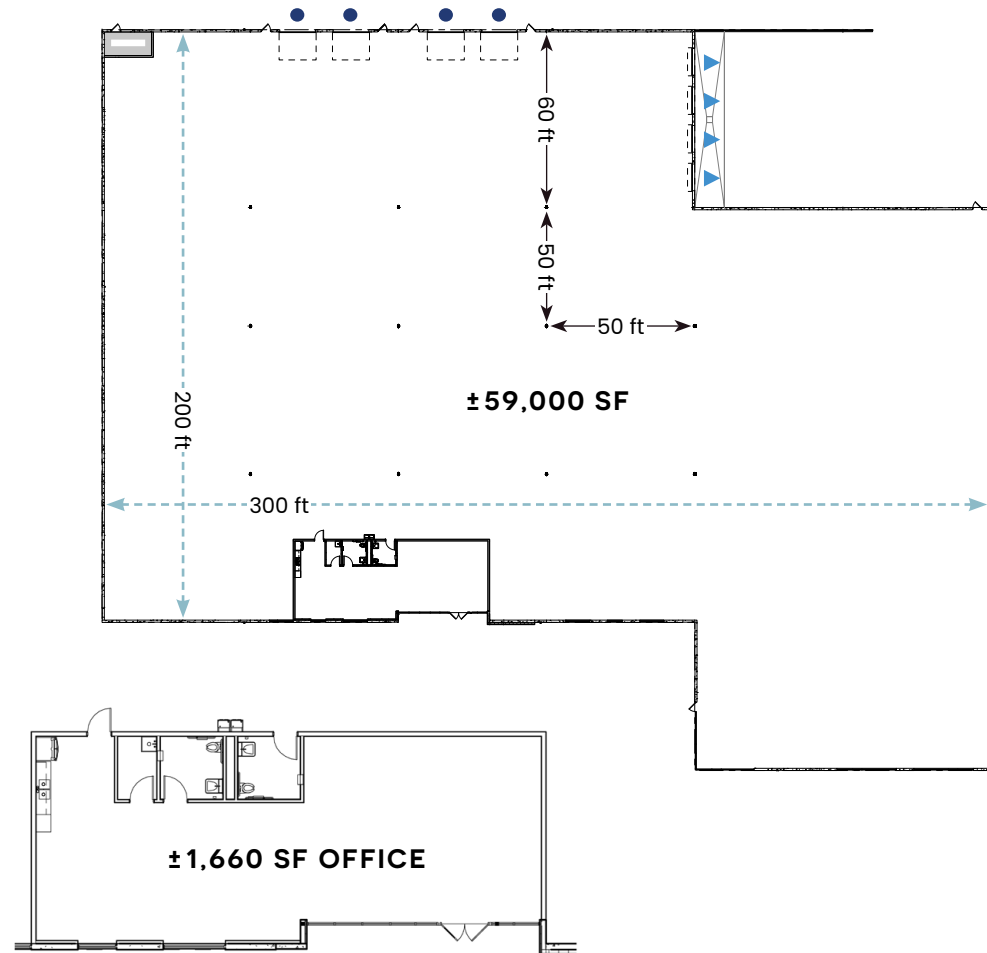
PAT HARLAN, MCR, SLCR
Senior Managing Director
+1 602 282 6298
pat.harlan@jll.com

KATIE WHITE
Associate
+1 480 760 3999
katie.white@jll.com





- ±59,000 SF building
- ±1,660 SF office
- ±4.41 acres
- 28' clear height
- Four dock-high doors
- Four grade-level doors
- ±145 parking spaces
- 2,500A 480/277V, 3PH
- 200' x 300' floorplate
- 50' x 50' column spacing
- Fire sprinkler system
- LED warehouse lighting
- Dock Package
- 100% HVAC warehouse with Stickpin Insulation

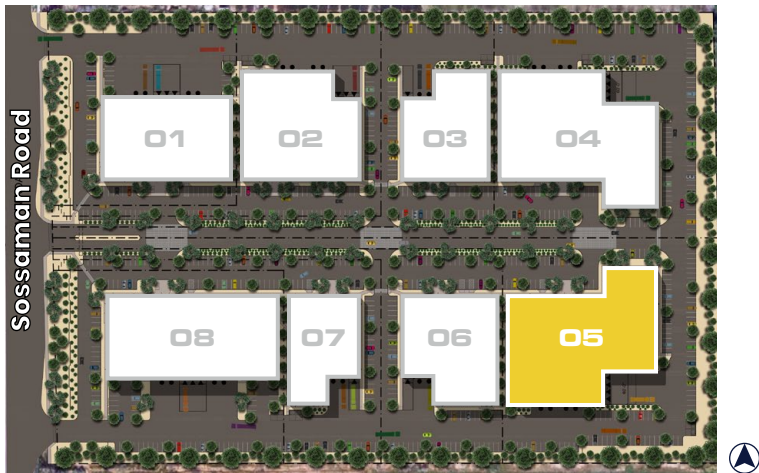


STEVE LARSEN, SIOR, CCIM
Vice Chairman
+1 602 282 6296
steve.larsen@jll.com

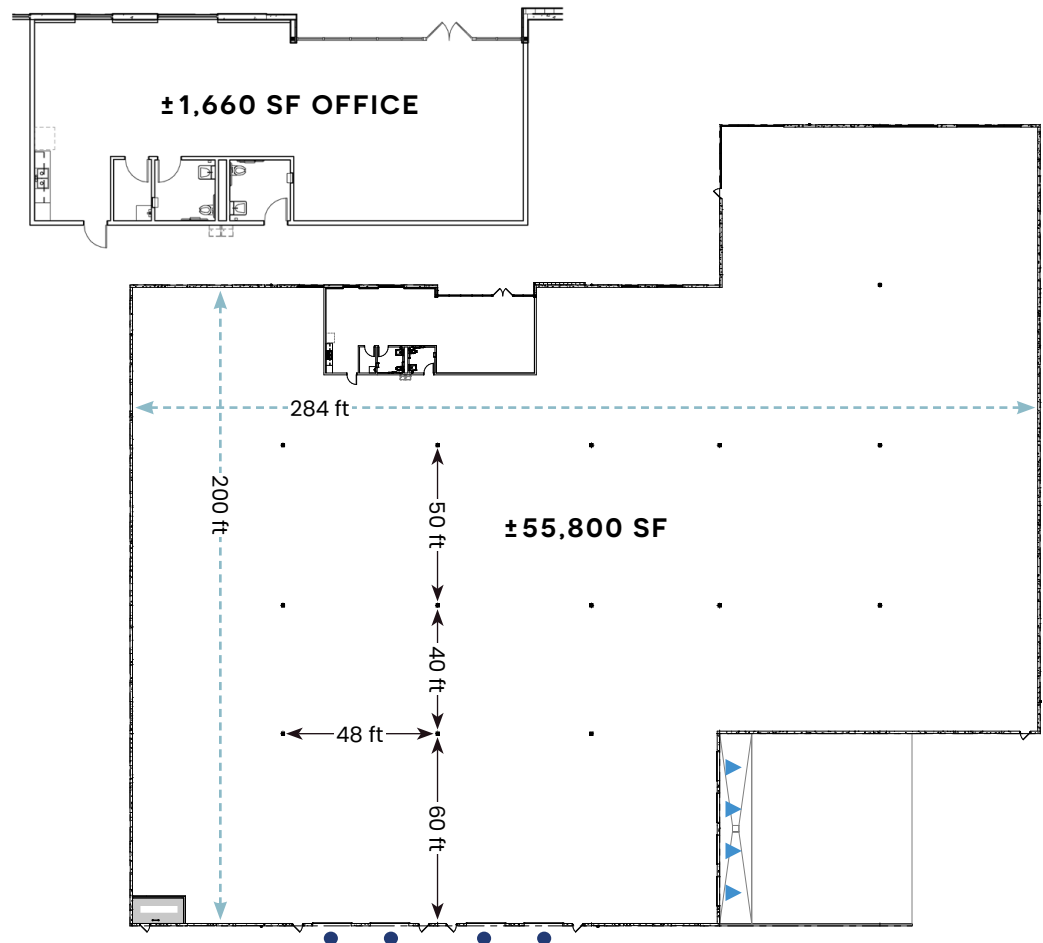
JASON MOORE, SIOR, CCIM
Managing Director
+1 602 282 6280
jason.moore@jll.com

PAT HARLAN, MCR, SLCR
Senior Managing Director
+1 602 282 6298
pat.harlan@jll.com

KATIE WHITE
Associate
+1 480 760 3999
katie.white@jll.com



- ±55,800 SF building
- ±1,660 SF office
- ±4.34 acres
- 28' clear height
- Four dock-high doors
- Four grade-level doors
- ±131 parking spaces
- 2,500A 480/277V, 3PH
- 200' x 284' floorplate
- 48' x 50' column spacing
- Fire sprinkler system
- LED warehouse lighting
- Dock Package
- 100% HVAC warehouse with Stickpin Insulation



STEVE LARSEN, SIOR, CCIM
Vice Chairman
+1 602 282 6296
steve.larsen@jll.com

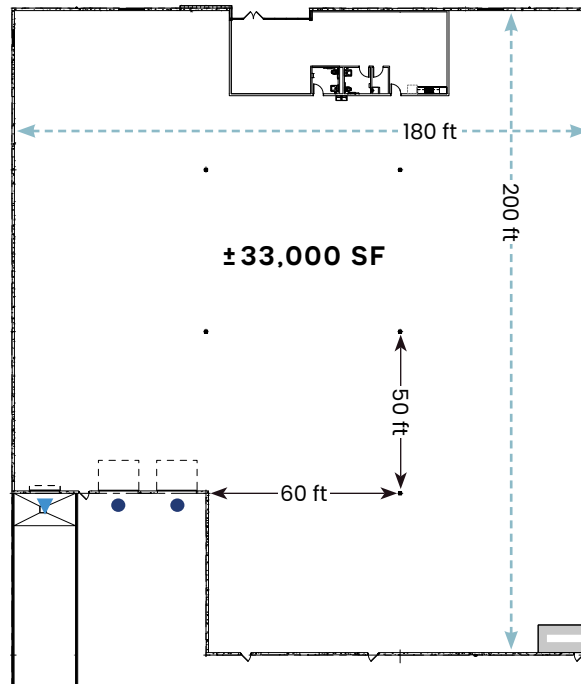
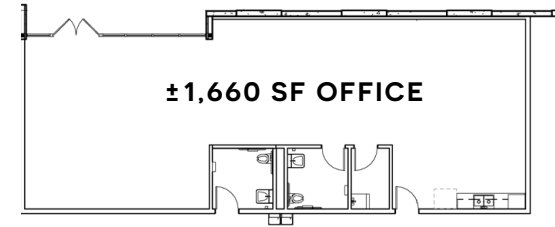
JASON MOORE, SIOR, CCIM
Managing Director
+1 602 282 6280
jason.moore@jll.com

PAT HARLAN, MCR, SLCR
Senior Managing Director
+1 602 282 6298
pat.harlan@jll.com

KATIE WHITE
Associate
+1 480 760 3999
katie.white@jll.com



- ±33,000 SF building
- ±1,660 SF office
- ±2.38 acres
- 28' clear height
- One dock-high door
- Two grade-level doors
- ±82 parking spaces
- 1,600A 480/277V, 3PH
- 200' x 180' floorplate
- 60' x 50' column spacing
- Fire sprinkler system
- LED warehouse lighting
- Dock Package
- 100% HVAC warehouse with Stickpin Insulation

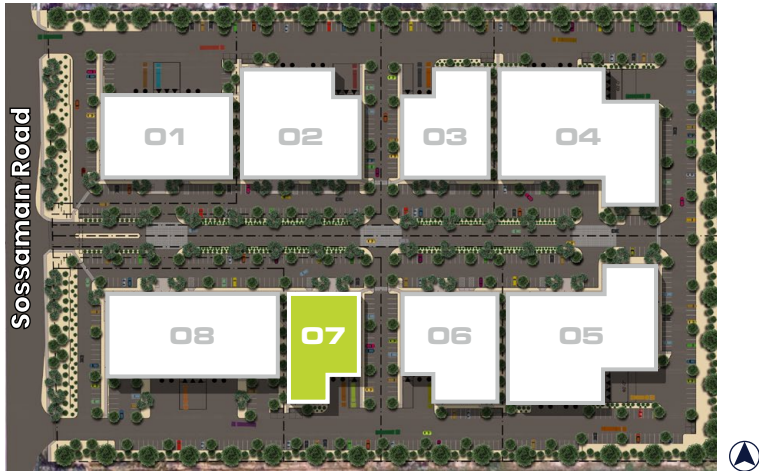


STEVE LARSEN, SIOR, CCIM
Vice Chairman
+1 602 282 6296
steve.larsen@jll.com

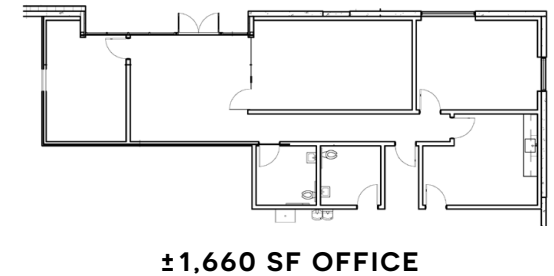
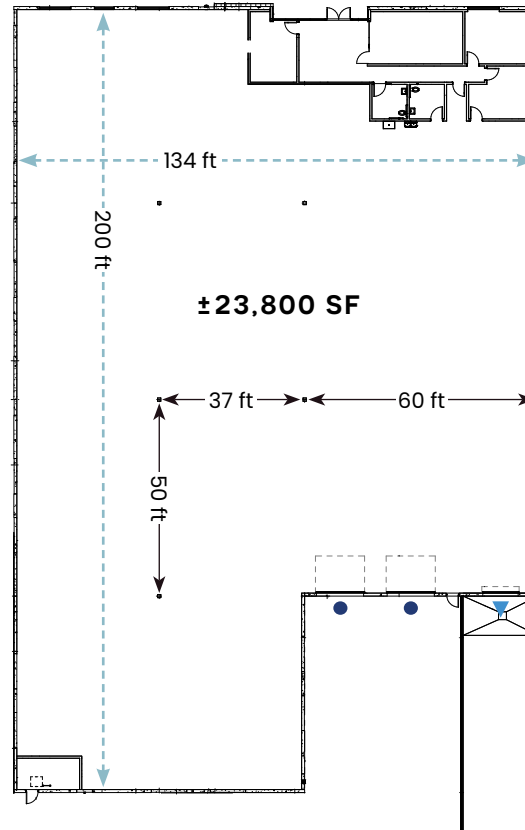
JASON MOORE, SIOR, CCIM
Managing Director
+1 602 282 6280
jason.moore@jll.com

PAT HARLAN, MCR, SLCR
Senior Managing Director
+1 602 282 6298
pat.harlan@jll.com

KATIE WHITE
Associate
+1 480 760 3999
katie.white@jll.com



- ±23,800 SF building
- ±1,660 SF office
- ±1.80 acres
- 28' clear height
- One dock-high door
- Two grade-level doors
- ±63 parking spaces
- 1,600A 480/277V, 3PH
- 134' x 200' floorplate
- 50' x 37' column spacing
- Fire sprinkler system
- LED warehouse lighting
- Dock Package
- 100% HVAC warehouse with Stickpin Insulation

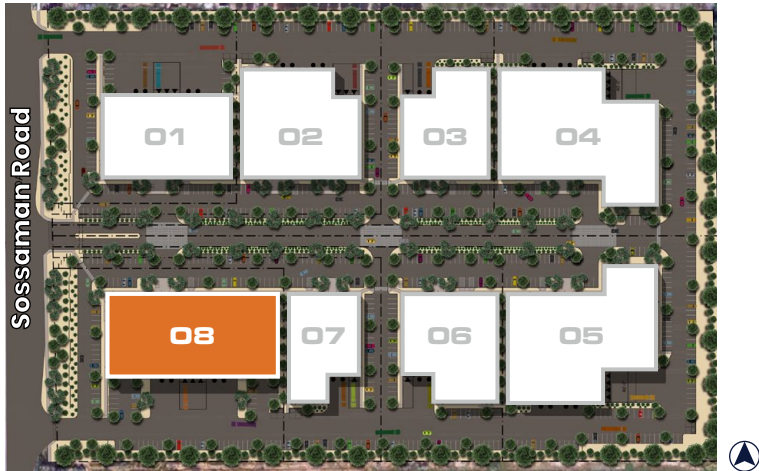


STEVE LARSEN, SIOR, CCIM
Vice Chairman
+1 602 282 6296
steve.larsen@jll.com

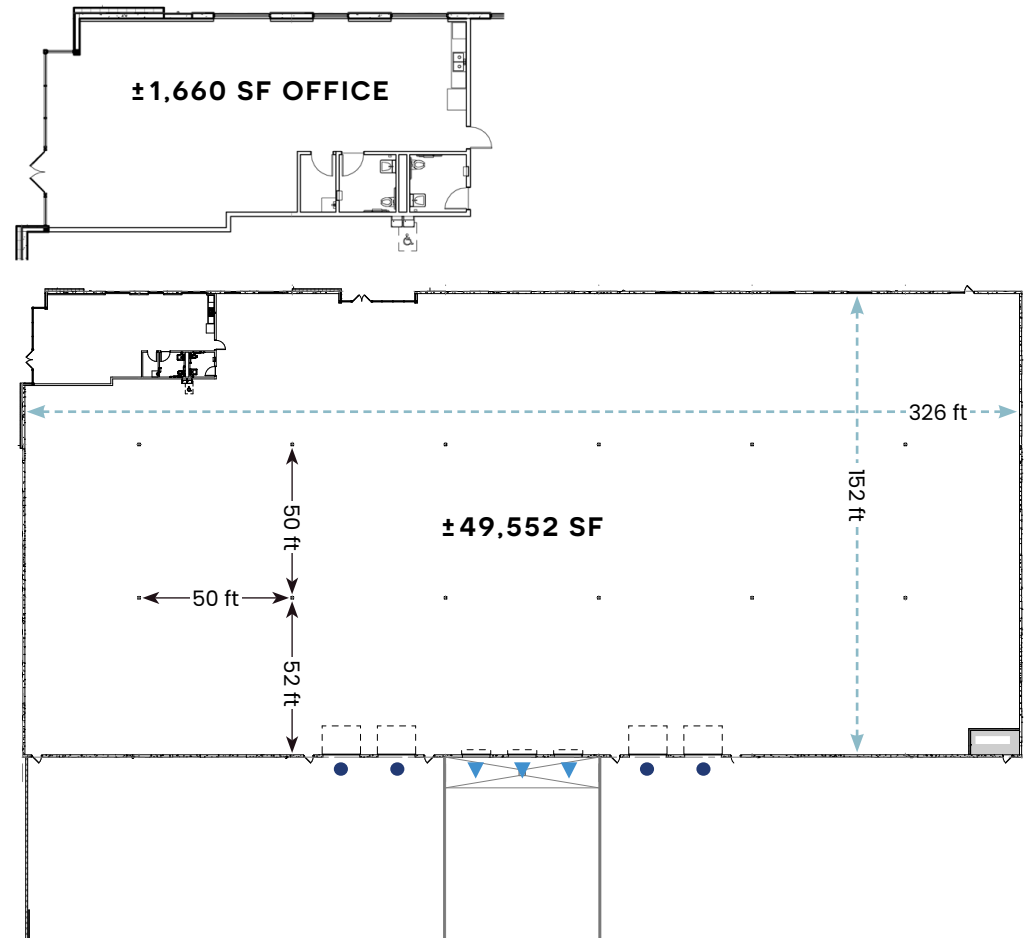
JASON MOORE, SIOR, CCIM
Managing Director
+1 602 282 6280
jason.moore@jll.com

PAT HARLAN, MCR, SLCR
Senior Managing Director
+1 602 282 6298
pat.harlan@jll.com

KATIE WHITE
Associate
+1 480 760 3999
katie.white@jll.com



- ±49,552 SF building
- ±1,660 SF office
- ±3.54 acres
- 28' clear height
- Three dock-high doors
- Four grade-level doors
- ±134 parking spaces
- 2,500A 480/277V, 3PH
- 152' x 326' floorplate
- 50' x 50' column spacing
- Fire sprinkler system
- LED warehouse lighting
- Dock Package
- 100% HVAC warehouse with Stickpin Insulation



STEVE LARSEN, SIOR, CCIM
Vice Chairman
+1 602 282 6296
steve.larsen@jll.com

JASON MOORE, SIOR, CCIM
Managing Director
+1 602 282 6280
jason.moore@jll.com

PAT HARLAN, MCR, SLCR
Senior Managing Director
+1 602 282 6298
pat.harlan@jll.com

KATIE WHITE
Associate
+1 480 760 3999
katie.white@jll.com