



1845 W Orange Grove

Tucson, Arizona 85704

Property Features

- $\pm 2,000$ - $\pm 2,300$ SF Medical Office Available for Lease
- Class A Medical Office Property on the Northwest Medical Center Campus
- Easy access and signage off of Orange Grove Rd with ample at-door parking for patients
- Well-maintained garden-style office complex with mature landscaping makes for a relaxed medical office setting



For Lease: \$14.00 SF/yr (NNN)

Andrew Sternberg

+1 520 729 1694

andrew.sternberg@naihonorizon.com

2900 North Swan Road, Suite 200

Tucson, AZ 85712

+1 520 326 2200

naihonorizon.com

NO WARRANTY OR REPRESENTATION, EXPRESS OR IMPLIED, IS MADE AS TO THE ACCURACY OF THE INFORMATION CONTAINED HEREIN, AND THE SAME IS SUBMITTED SUBJECT TO ERRORS, OMISSIONS, CHANGE OF PRICE, RENTAL OR OTHER CONDITIONS, PRIOR SALE, LEASE OR FINANCING, OR WITHDRAWAL WITHOUT NOTICE, AND OF ANY SPECIAL LISTING CONDITIONS IMPOSED BY OUR PRINCIPALS NO WARRANTIES OR REPRESENTATIONS ARE MADE AS TO THE CONDITION OF THE PROPERTY OR ANY HAZARDS CONTAINED THEREIN ARE ANY TO BE IMPLIED.

For Lease

Northwest Medical Park

Available Spaces

LEASE TYPE | NNN

TOTAL SPACE | 2,000 - 2,300 SF

LEASE TERM | Negotiable

LEASE RATE | \$14.00 SF/yr

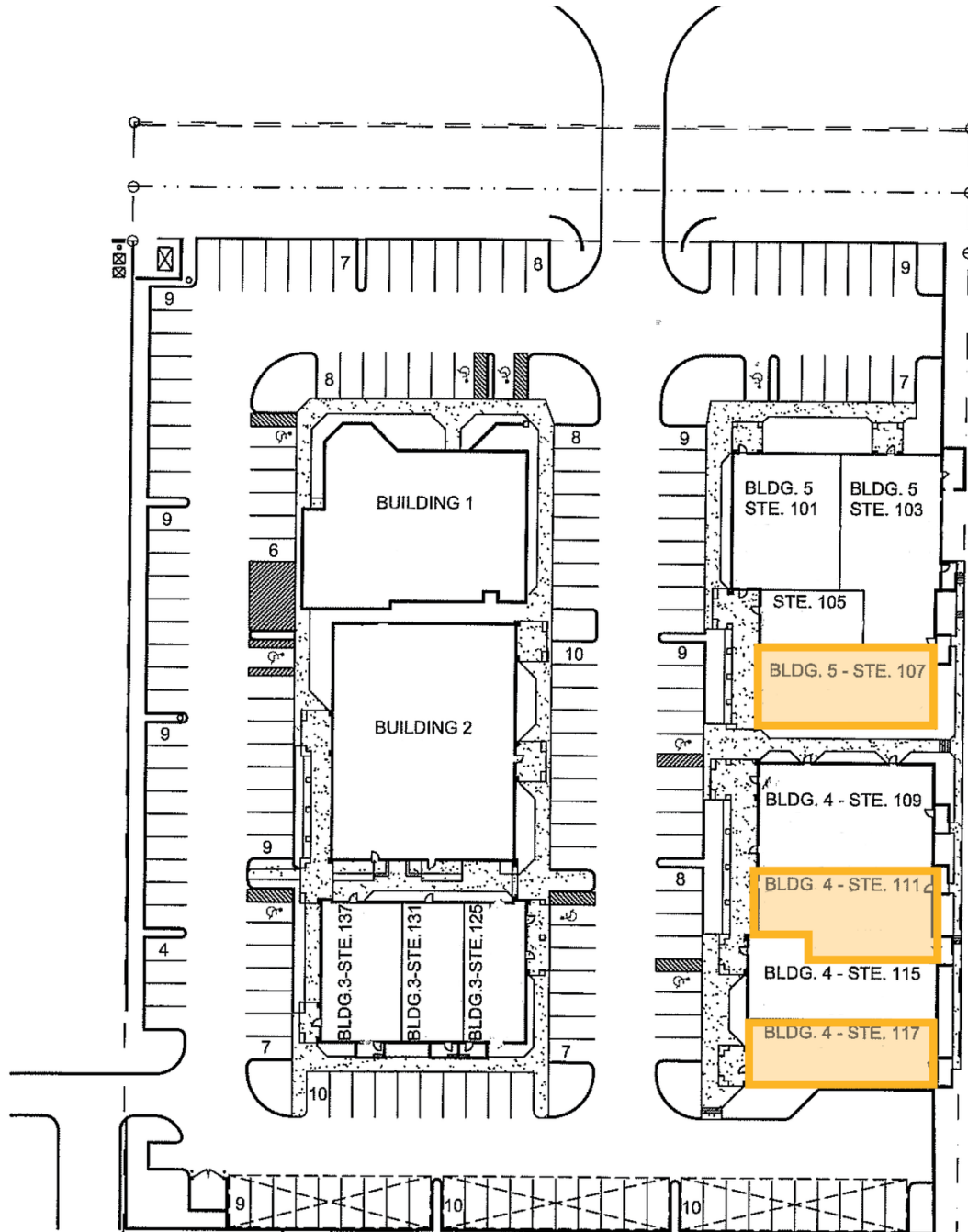


SUITE	TENANT	SIZE (SF)	LEASE TYPE	LEASE RATE
Bldg 5 - Suite 107	Available	2,234 SF	NNN	\$14.00 SF/yr
Bldg 4 - Suite 111	Available	2,300 SF	NNN	\$14.00 SF/yr
Bldg 4 - Suite 117	Available	2,000 SF	NNN	\$14.00 SF/yr

For Lease

Northwest Medical Park

Site Plan



Andrew Sternberg

+1 520 729 1694

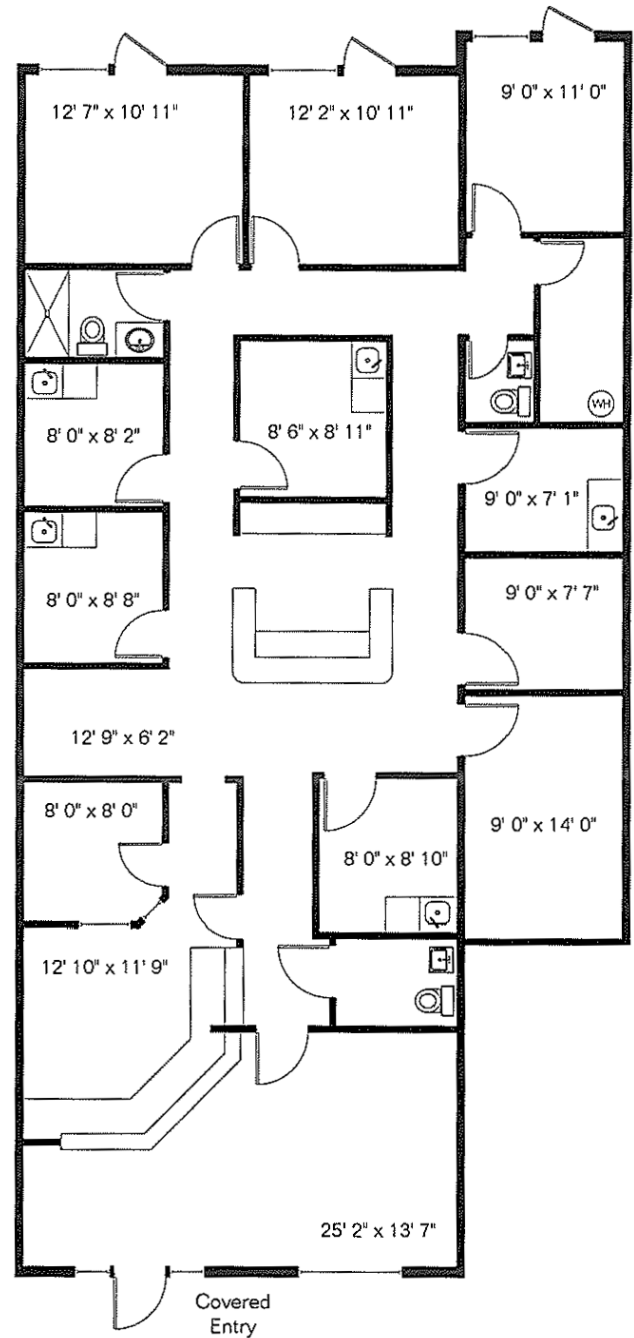
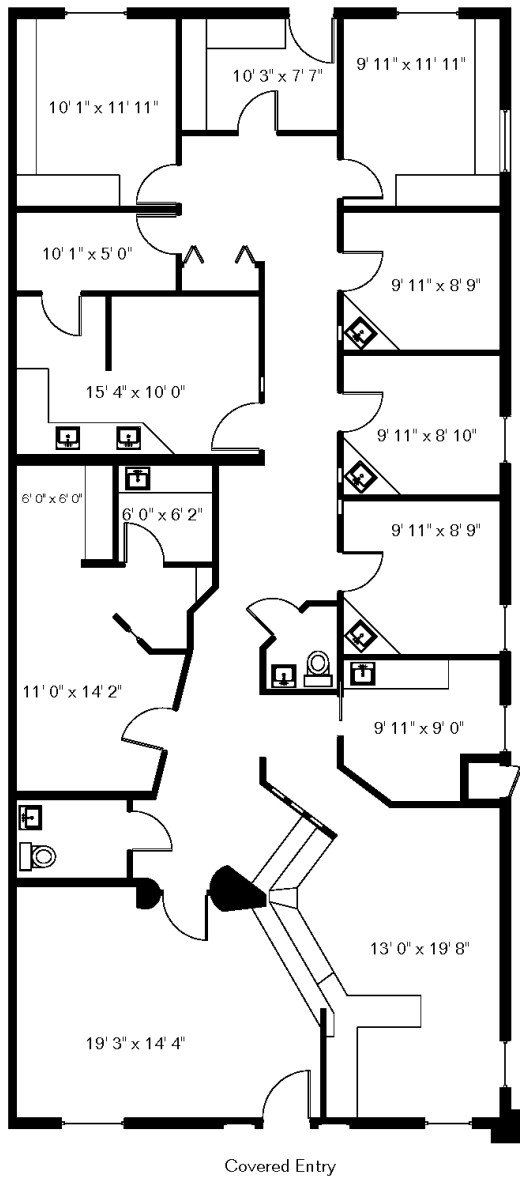
andrew.sternberg@naihorizon.com



For Lease

Northwest Medical Park

Floor Plans



1

BLDG 5 - SUITE 107

±2,234 SF

2

BLDG 4 - SUITE 111

±2,300

Andrew Sternberg

+1 520 729 1694

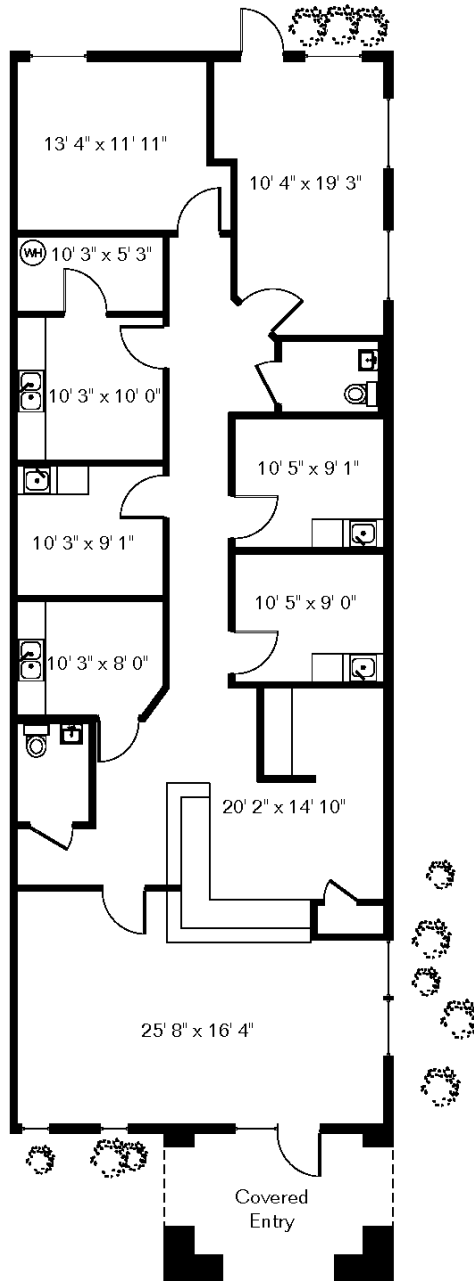
andrew.sternberg@naihorizon.com

NAI Horizon

For Lease

Northwest Medical Park

Floor Plans



1

BLDG 4 - SUITE 117

±2,000 SF

Andrew Sternberg

+1 520 729 1694

andrew.sternberg@naihorizon.com

NAI Horizon