



# Country Side Dr & Whispering Way Condos

Newark, OH



## Offering Summary

Sale Price:	\$3,074,000
Building Size:	26,100 SF
Lot Size:	39,204 SF
Number of Units:	29
Price / SF:	\$117.78

APN:	054-286128-35.001
	054-286128-35.005
	054-286128-37.009
	054-286128-33.001
	054-286128-35.009
	054-286128-37.013
	054-286128-37.008
	054-286128-37.002

## Property Overview

This investment offering includes 29 fully leased multifamily units across multiple addresses on Country Side Drive and Whispering Way in Newark, Ohio. With 100% occupancy, the property provides stable in-place income and immediate cash flow. Each unit is part of a well-maintained community, with all roofs updated within the last 8 years. This portfolio presents a rare opportunity to acquire a sizable collection of units in a single transaction. The scale, strong rental history, and recent capital improvements make this property especially appealing to multifamily and condo investors seeking long-term value. Financials are available upon request with a signed NDA.

## Location Overview

Situated in a prime Newark location, the property benefits from unmatched convenience. Residents enjoy easy access to SR-16 for commuting, as well as close proximity to healthcare facilities, shopping, office centers, and local colleges. This accessibility enhances tenant appeal and supports consistent rental demand, while the surrounding amenities ensure the community remains an attractive choice for a wide range of renters.





# Country Side & Whispering Way Condos

1380 1385 1389 1391 1393 1396 1400 Country Side Dr & 1391 Whispering Way, Newark, OH 43055





**SHAI•HESS**  
COMMERCIAL REAL ESTATE LLC.

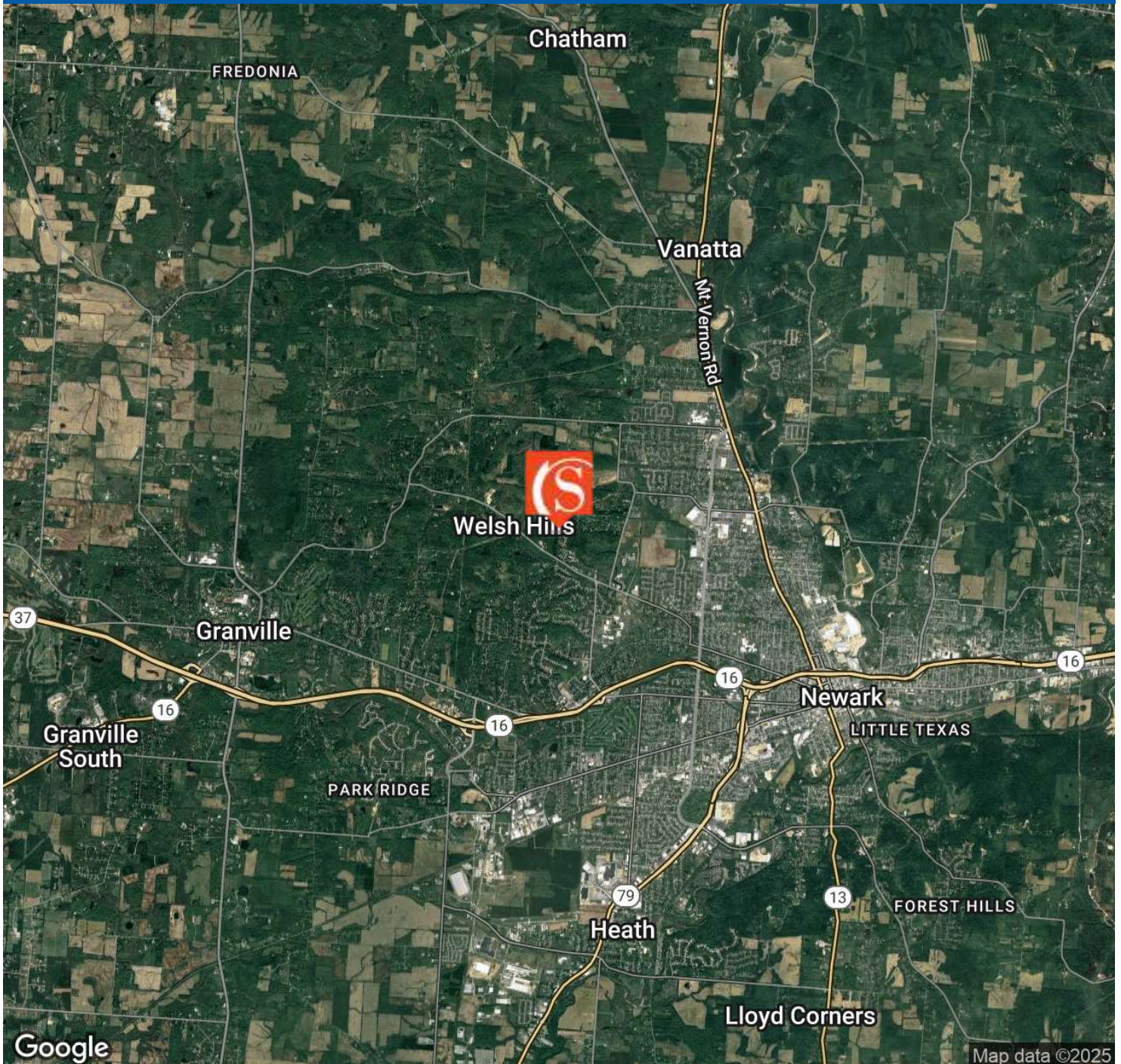
Brokerage, Development, Management  
[www.shai-hess.com](http://www.shai-hess.com)



Location Map

# Country Side & Whispering Way Condos

1380 1385 1389 1391 1393 1396 1400 Country Side Dr & 1391 Whispering Way, Newark, OH 43055



Shai-Hess Commercial | 1471 Granville Road | Newark, OH 43055 | 740.587.7441 | [shai-hess.com](http://shai-hess.com)

Information contained has been established from sources that we have no doubt as to accuracy, but we do not guarantee it.

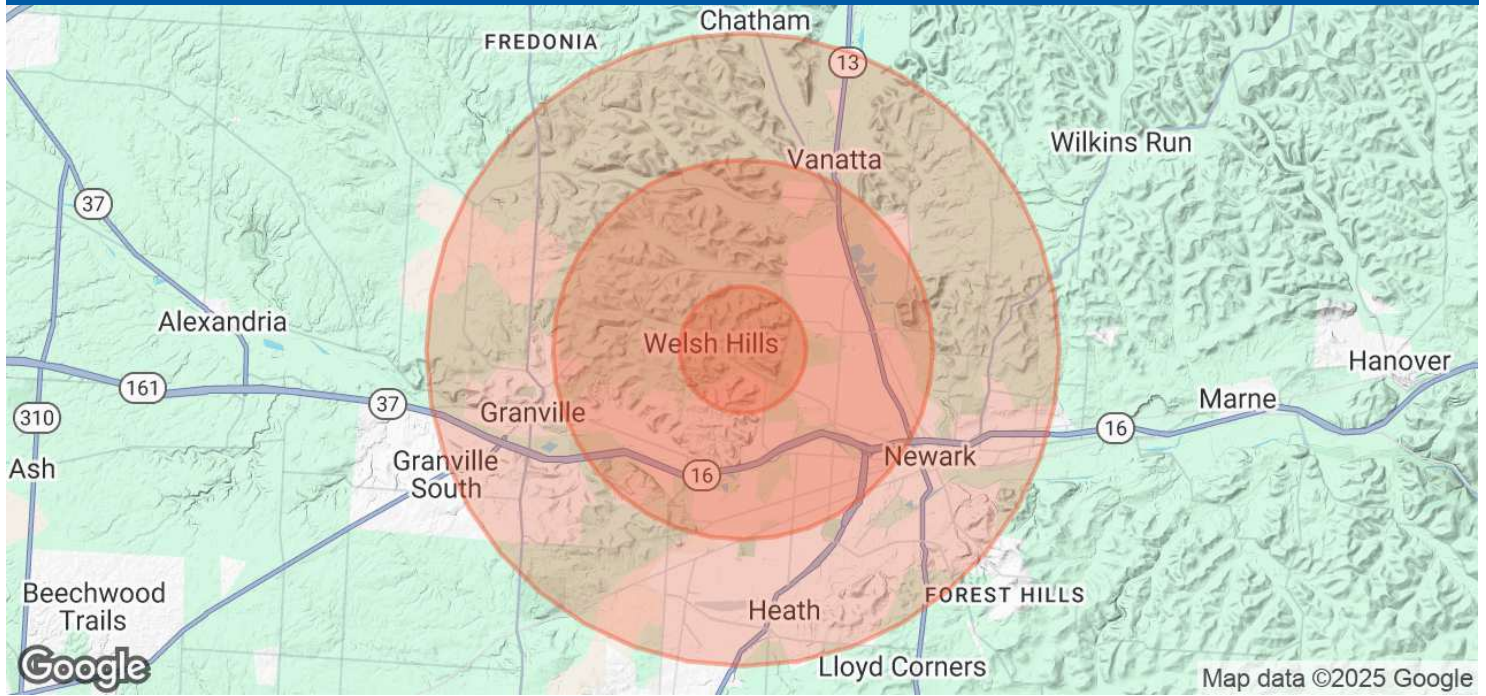






## Country Side & Whispering Way Condos

1380 1385 1389 1391 1393 1396 1400 Country Side Dr & 1391 Whispering Way, Newark, OH 43055



### Population

	1 Mile	3 Miles	5 Miles
Total Population	2,536	40,337	74,444
Average Age	45	42	41
Average Age (Male)	43	40	40
Average Age (Female)	47	43	42

### Households & Income

	1 Mile	3 Miles	5 Miles
Total Households	1,074	16,726	30,104
# of Persons per HH	2.4	2.4	2.5
Average HH Income	\$115,824	\$94,134	\$93,292
Average House Value	\$287,502	\$241,793	\$246,221

Demographics data derived from AlphaMap

