



**FOR SALE**

# MEDICAL OFFICE BUILDING

## Property Highlights

- Sale Price: \$1,500,000
- Property Size: 9,780 ± SF / 1.10 ± AC
- Built out as a medical/pathology lab
- Surrounded by many office and retail establishments
- Easy access to Colonel Glenn (26,000 VPD) and I-430  
(83,000 VPD)
- 51 Parking Spaces

**For more information, please  
contact:**

**Jason Parker, SIOR**

+1 501 680 0321

[jparker@sagepartners.com](mailto:jparker@sagepartners.com)

**Rose Kline**

+1 817 965 1225

[rkline@sagepartners.com](mailto:rkline@sagepartners.com)

**501 716 5511**

[sagepartners.com](http://sagepartners.com)

\*information deemed reliable but not guaranteed

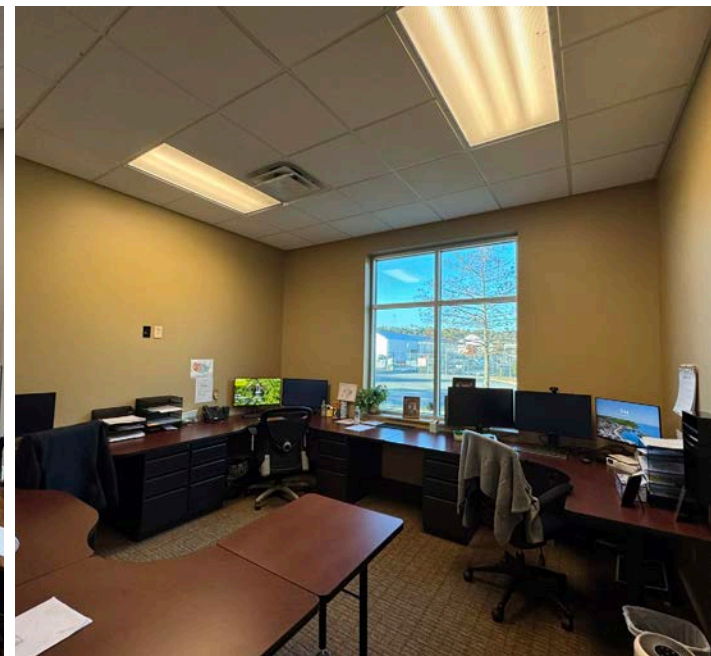
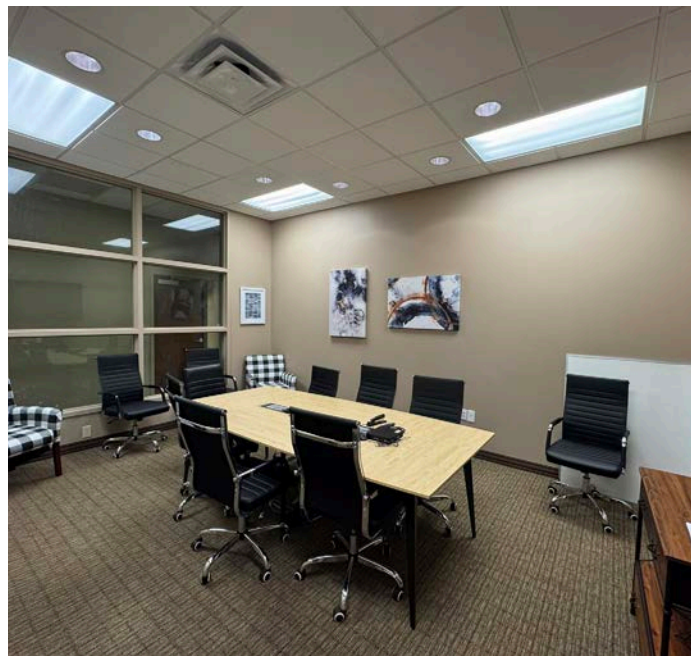
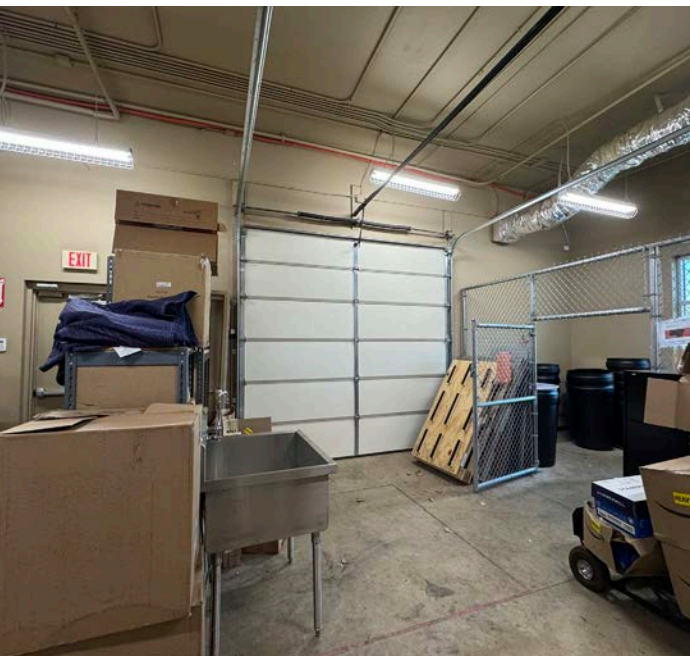
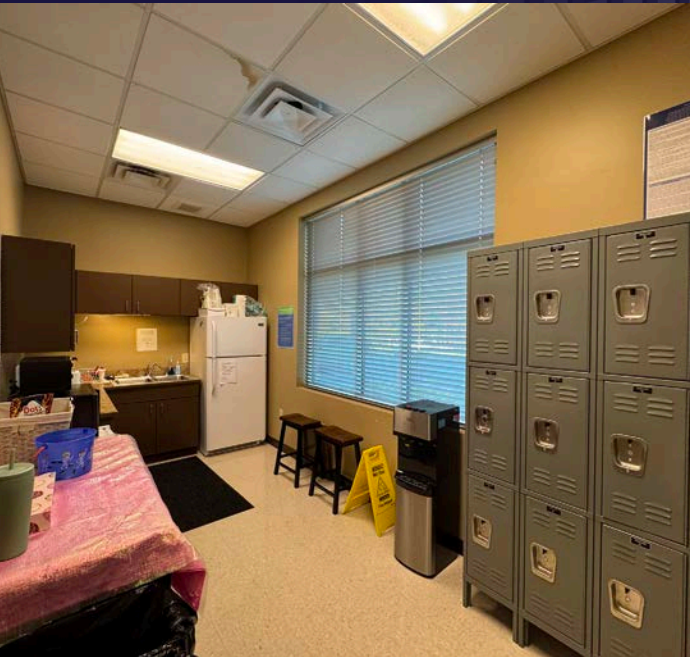


# INTERIOR PHOTOS 5100 TALLEY RD | LITTLE ROCK, AR 72204

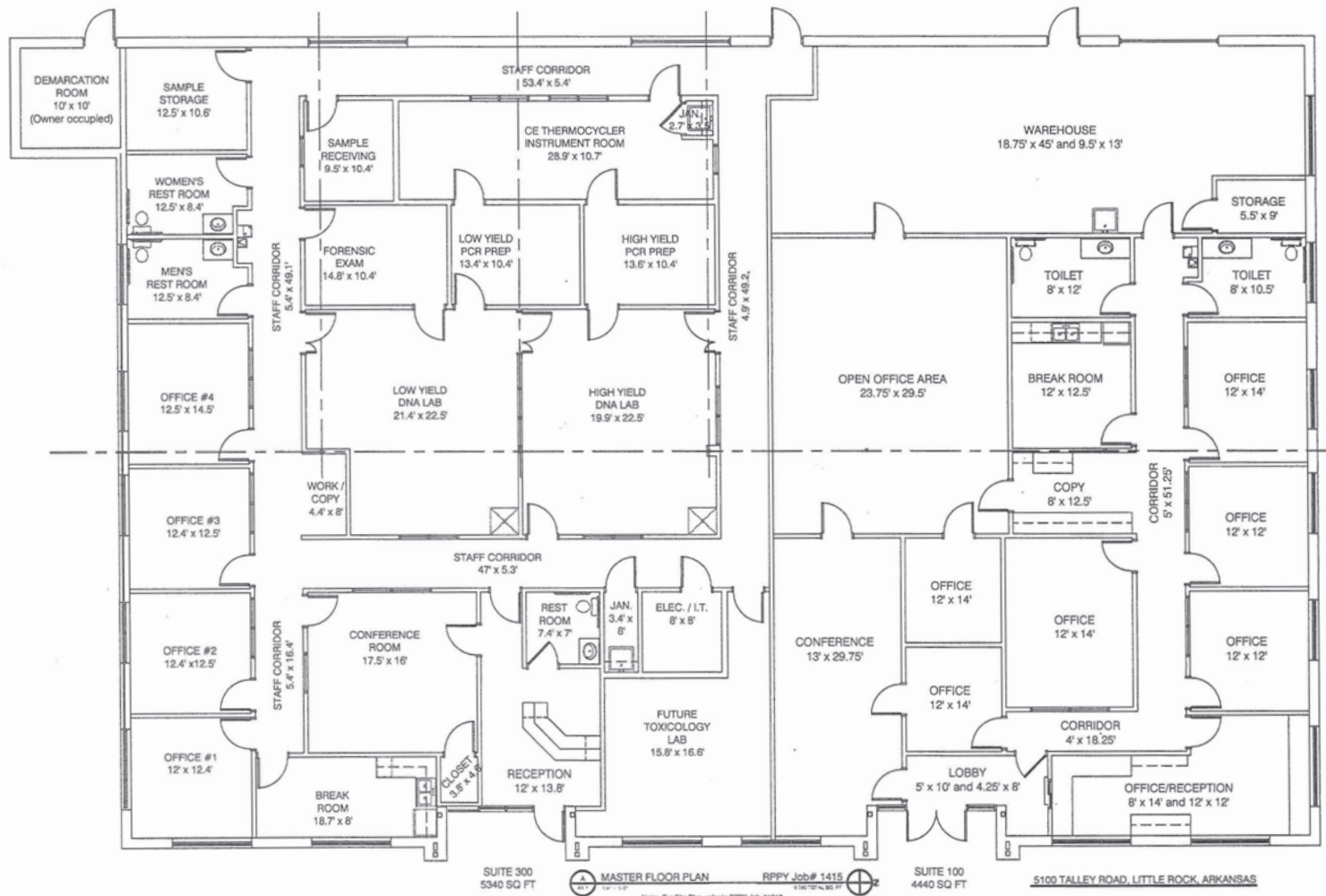


CUSHMAN &  
WAKEFIELD

sage  
PARTNERS







\*Measurements and layout not exact



