

# SPACE FOR LEASE

**Parkridge Professional Center**  
2021 E Commercial Blvd  
Fort Lauderdale, Florida 33308

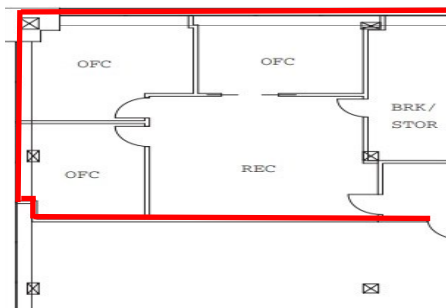
**Upscale Fort Lauderdale Area**  
Located just East of N Federal  
Hwy on Commercial Blvd

## PRIME OFFICE LOCATION

- Office Space Available Immediately
- Exceptional Design and Property Maintenance
- Traffic Count 46,000+
- Competitive Lease Rates
- Dense Medical Corridor
- 1,371 Sq Ft Turnkey Office or Medical



ParkRidge Professional Center  
Suite 205  
1,371 RSF



Floor Plan



Licensed Real Estate Broker

**954.491.2281 PH**

**954.491.2298 FX**

[www.negproperty.com](http://www.negproperty.com)  
[tom@negproperty.com](mailto:tom@negproperty.com)

**TOM BUSH**

Licensed Sales Associate

The information above has been obtained from sources believed reliable. While we do not doubt its accuracy, we have not verified it and make no guarantee, warranty, or representation about it. It is your responsibility to confirm its accuracy and completeness. Any projections, opinions, assumptions, or estimates used are for examples only and do not represent the current or future performance of the property.