

FOR LEASE

AVAILABLE NOW

DONOHOE

Integrity and Vision Since 1884

7101 WISCONSIN AVENUE
BETHESDA, MD 20814

Suite 990: 3,421 SF (9th Floor)

Suite 1000, 1011, 1012, 1050: 3,048 SF - 16,911 SF (10th Floor)

Suite 1301: 4,046 SF (13th Floor)

3,048 - 16,991 SF OFFICE SPACE

14-story building - 249,781 SF

Security card key system with 24-hour monitoring and weekday lobby attendant

Newly renovated building with best-in-class amenities, including: conference center, tenant-only gym, on-site deli, private covered garage, WiredScore certified, and Energy-Star certified

LOCATION

Ideal location in the heart of downtown Bethesda with nearby shopping and dining

Walking distance to existing and future Metro stations

Easy access to several major highways, including: I-495, I-270, and I-95

Short drive to Washington, DC



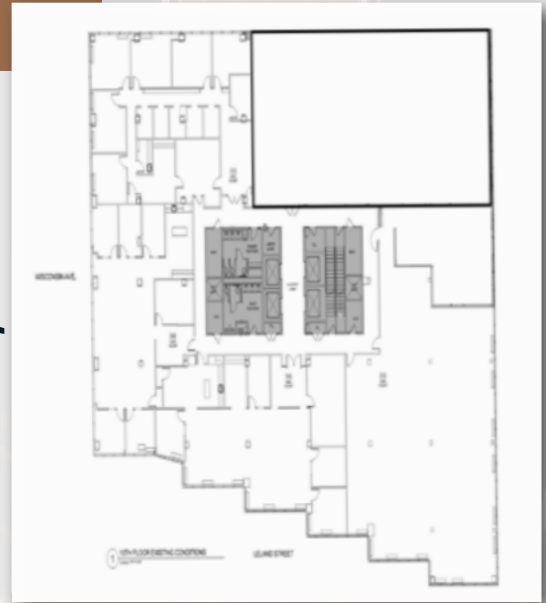
FLOOR PLANS

SUITE 990



3,421 SF

**SUITES 1000, 1011,
1012, 1050**



3,048-16,911 SF

SUITE 1301



4,046 SF

CONTACT US:

MATT O'CONNELL
301.614.8891
MATTO@DONOHOE.COM

BERT DONOHOE
202.625.4145
BERTD@DONOHOE.COM

ETHAN ABRAMS
202.625.4192
ETHANA@DONOHOE.COM