

14225 Schaefer Hwy

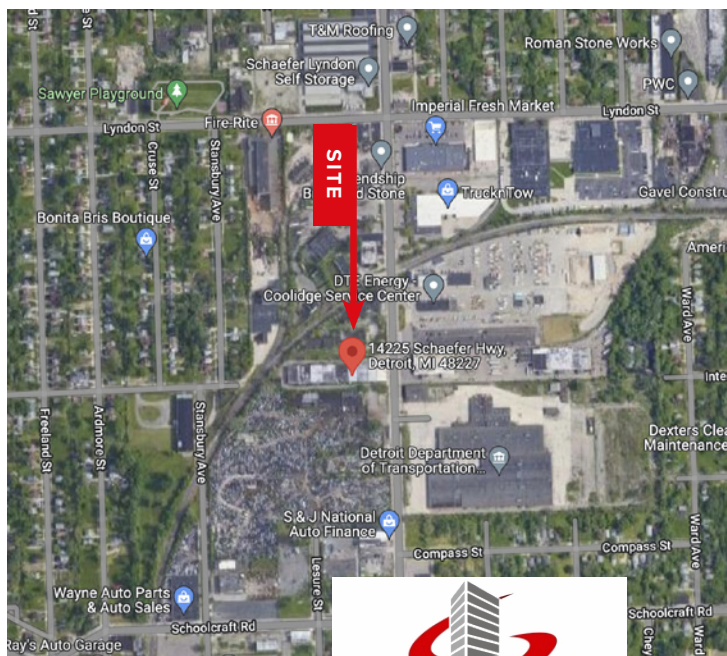
DETROIT, MI 48227

FOR SALE **\$1,497,000 | STORAGE | WAREHOUSE | APPROVED FOR CANNABIS**

FOR LEASE **CALL FOR PRICING - SPECIAL LEASE INCENTIVES**



Sale Price:	\$1,497,000.00
Address:	14225 Schaefer, Detroit, MI 48227
Lease:	Starting @ \$5 Plus NNN
Leasable Space Minimum:	10K SF up to 44K SF
Building Best Use:	City Approved with Golden Seal for Cannabis Cultivation & Processing, Transportation, Storage Facility, Manufacturing, Commissary, Trucking, Distribution Center, etc.
Building Sq. Ft.:	44,000 Sq. Ft.
Clear Height:	14'
Total Acreage:	1.76 Acres
Zoning:	M4



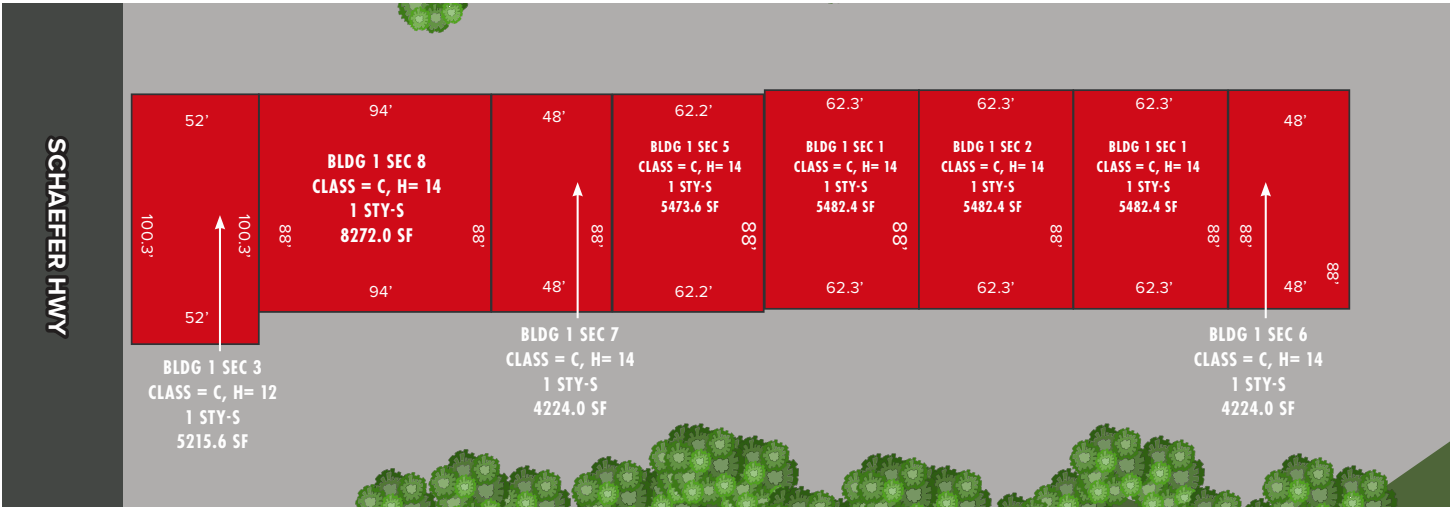
FOR MORE INFORMATION PLEASE CONTACT:

Maurice Khalifa

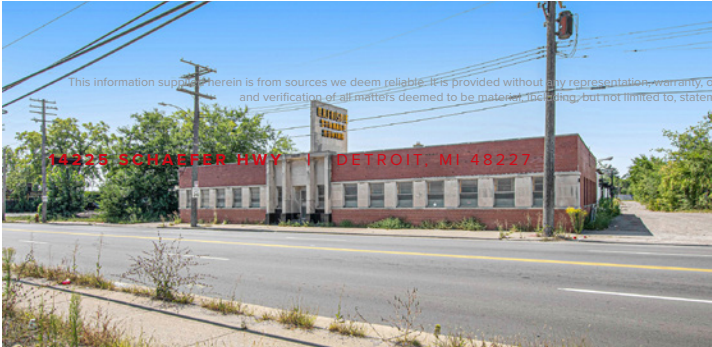
Principal Broker | 📞 (586) 615-0101 | ✉️ maurice@showcaseonerealestate.com

www.showcaseonerealestate.com

Site Plan



Property Photos



FOR MORE INFORMATION PLEASE CONTACT:

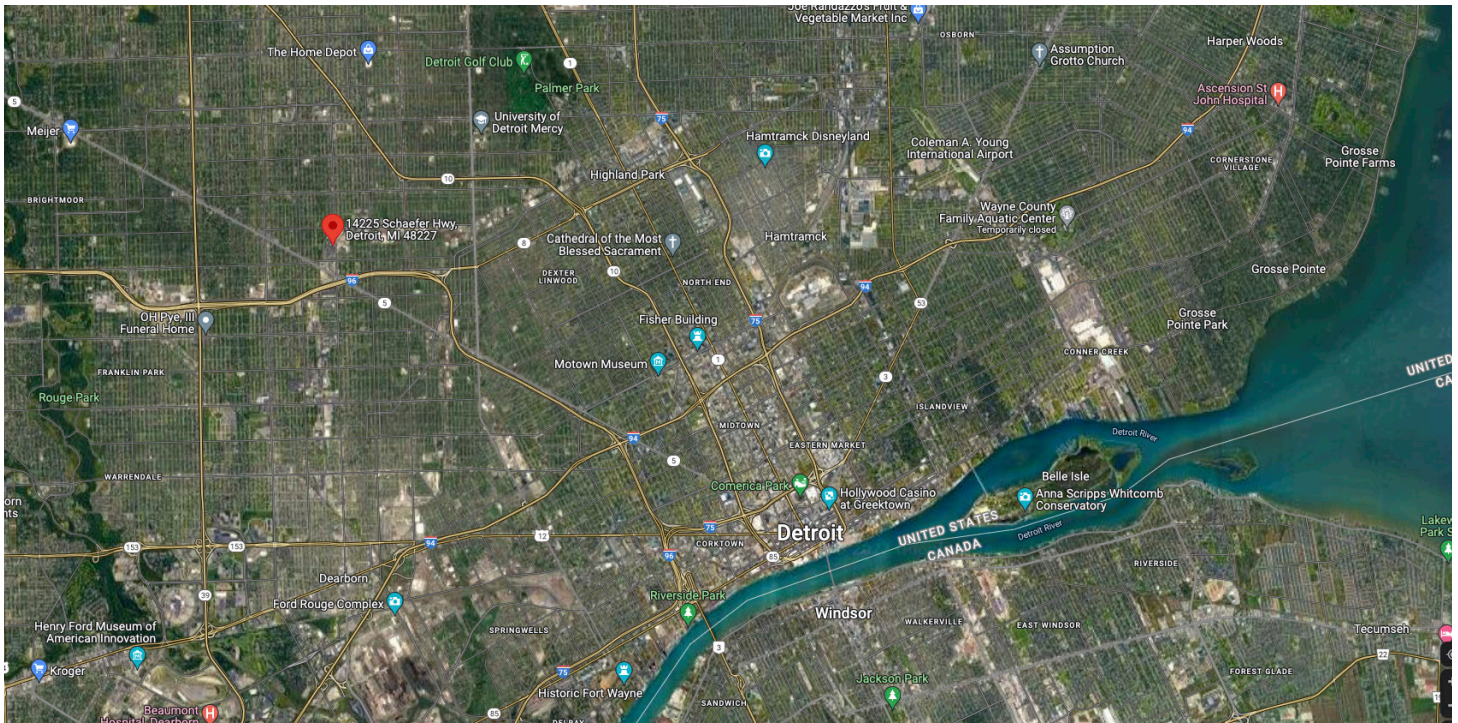
Maurice Khalifa

Principal Broker | 📞 (586) 615-0101 | ✉ maurice@showcaseonerealestate.com



www.showcaseonerealestate.com

Regional Map



Demographics

Population	1 mile	3 mile	5 mile
2022 Total Population	14,888	159,148	415,452
2027 Population	14,751	156,288	409,943
Average Age	38	39	38
2022 Total Households	5,416	59,836	153,260
HH Growth 2022-2027	(1.07%)	(1.98%)	(1.49%)
Median Household Income	\$29,166	\$33,598	\$34,189
Avg Household Size	2.70	2.60	2.70
Median Home Value	\$62,130	\$70,357	\$76,863

FOR MORE INFORMATION PLEASE CONTACT:

Maurice Khalifa

Principal Broker | 📞 (586) 615-0101 | ✉️ maurice@showcaseonerealestate.com

www.showcaseonerealestate.com

